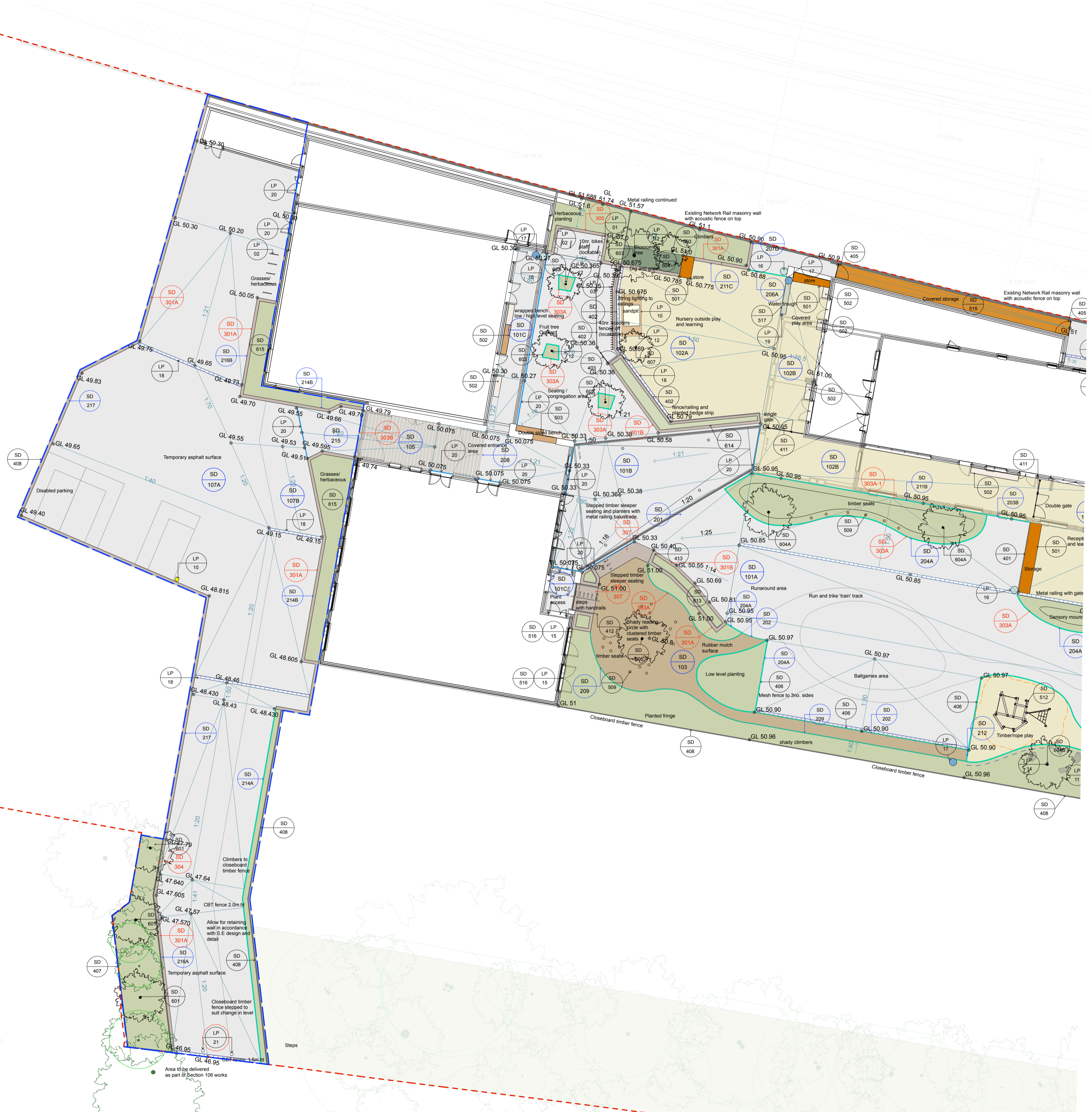


**KEY**

- - - Site boundary line
- - - Area outside school boundary however please note this is included in phase 1 works
- Storage
- Low seating
- High seating
- Fall height protection area
- Existing tree RPA (root protection area)  
All surfacing within this area to be laid on cellweb construction as detailed
- Existing tree
- Proposed tree
- Walls/railings/fences
- Timber sleeper edges/walls/steps
- Asphalt
- Proposed planting
- Bonded rubber mulch softplay surface
- Wetpour softplay surface
- 00.00 Existing level
- 00.00 Proposed level
- Detail Reference Number (landscape/playground equipment and enclosures)
- Detail Reference Number (edging)
- Detail Reference Number (surfacing and surfaces thresholds)

Note: All external works should comply with Arboricultural Method Statement



N  
  
**JCLA**  
 3A Iliffe Yard  
 LONDON SE17 3QA  
 Telephone  
 +44 (0)207 703 3270  
 www.jcla.co.uk

**Notes**

- Do not scale from drawings.
- To be read in conjunction with all relevant Architects', Services and Structural Engineers' drawings.
- All existing site, tree and building information has been compiled from different sources.
- All dimensions to be checked on site.

**Revisions**

- Revision A1
- Amended layout of entrance planters.
- Detail references updated.
- Detail reference to planters in public realm updated to suit new topsoil level.
- Detailed detail reference for paint marking in western access road.
- Trees relocated to suit planning comments and foundations installed on site.
- Slope drains and aluminium edge with holes, detail references added to suit engineer's comments.
- Detail references added for drop down bollards.
- Timber edge omitted to nursery dig and grow to suit edges installation on site.
- Semaphore railway signal relocated.

PLANNING CONDITION  
ISSUE

Bubbles key  
 Changes

<b>Project</b>	Kingsgate Liddell	<b>Revision</b>	
<b>Project No.</b>	KL037		<b>A</b>
<b>Client</b>	London Borough of Camden		
<b>Date</b>	19th June 2017		
<b>Scale</b>	1:200 @ A1		
<b>Drawing Name</b>	Detail Landscape plan 4		
<b>Dwg No.</b>	KL037.F.01.DLP4		