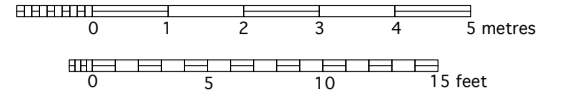


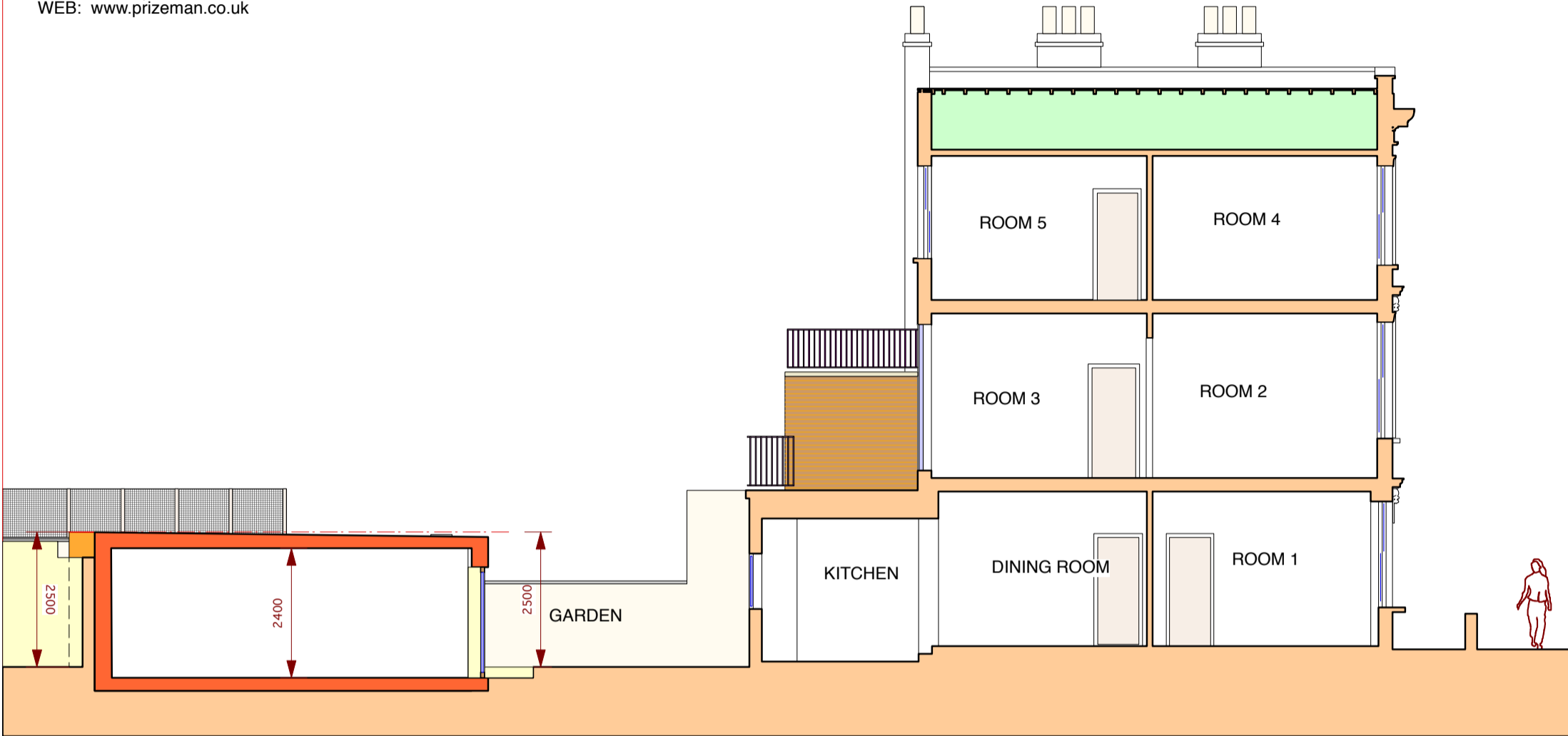
HEA 7C - 4 HEALEY STREET, NW1 8SR
 House Development for June Williams
PROPOSED SECTIONS A-A AND B-B
 Scale 1:100@A3
 © Mark Prizeman 2015

PROPOSED

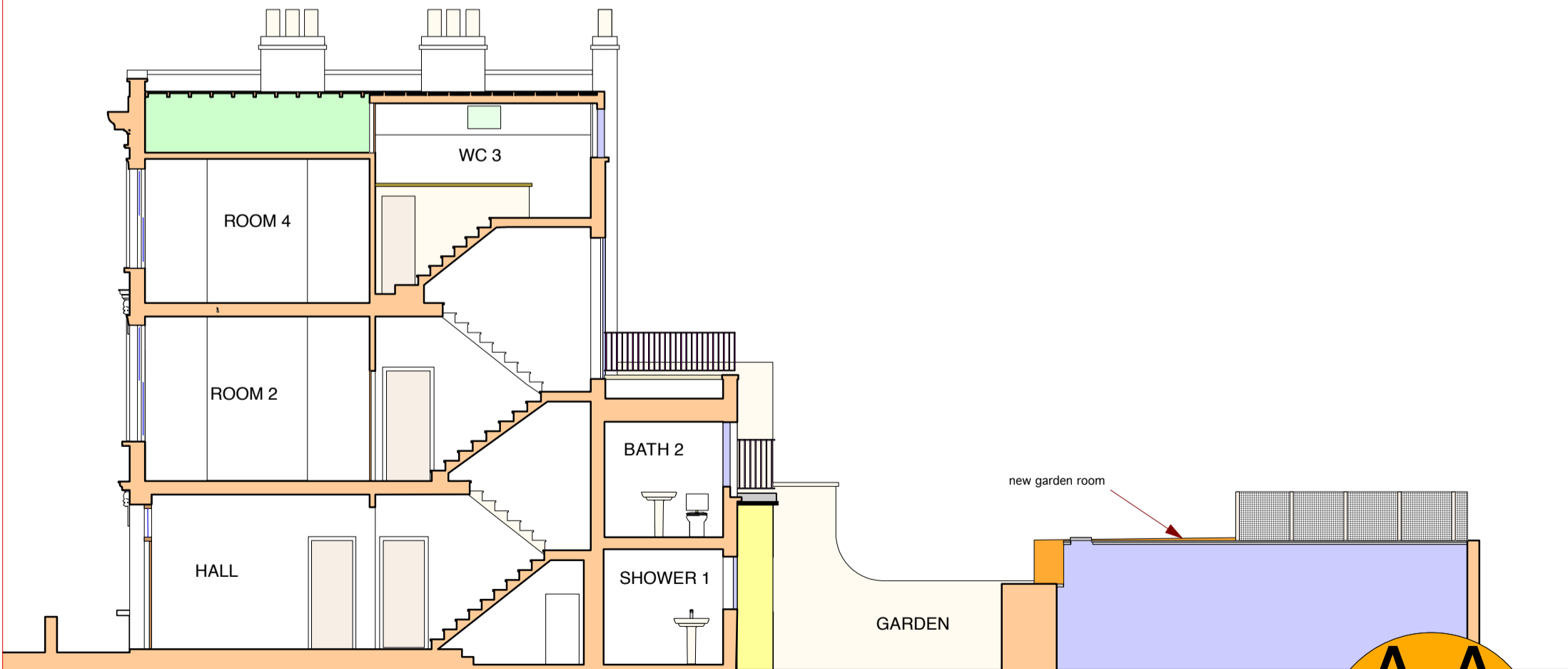


14th May 2015
 1st September 2015
 26th November 2015
 25th August 2017

Mark Prizeman AADipl RIBA, chartered architect -
 7 Dilke Street, London SW3 4JE
 TEL: 020 7460 1348
 MOB: 07990 525 869
 E-MAIL: markprizeman@hotmail.com
 markprizeman@btinternet.com
 WEB: www.prizeman.co.uk



SECTION A-A



**A-A
 &
 B-B**