

28 Belsize Lane, London

Alison Brooks Architects

Planting design report

Planning application - Reserved matters

August 2017



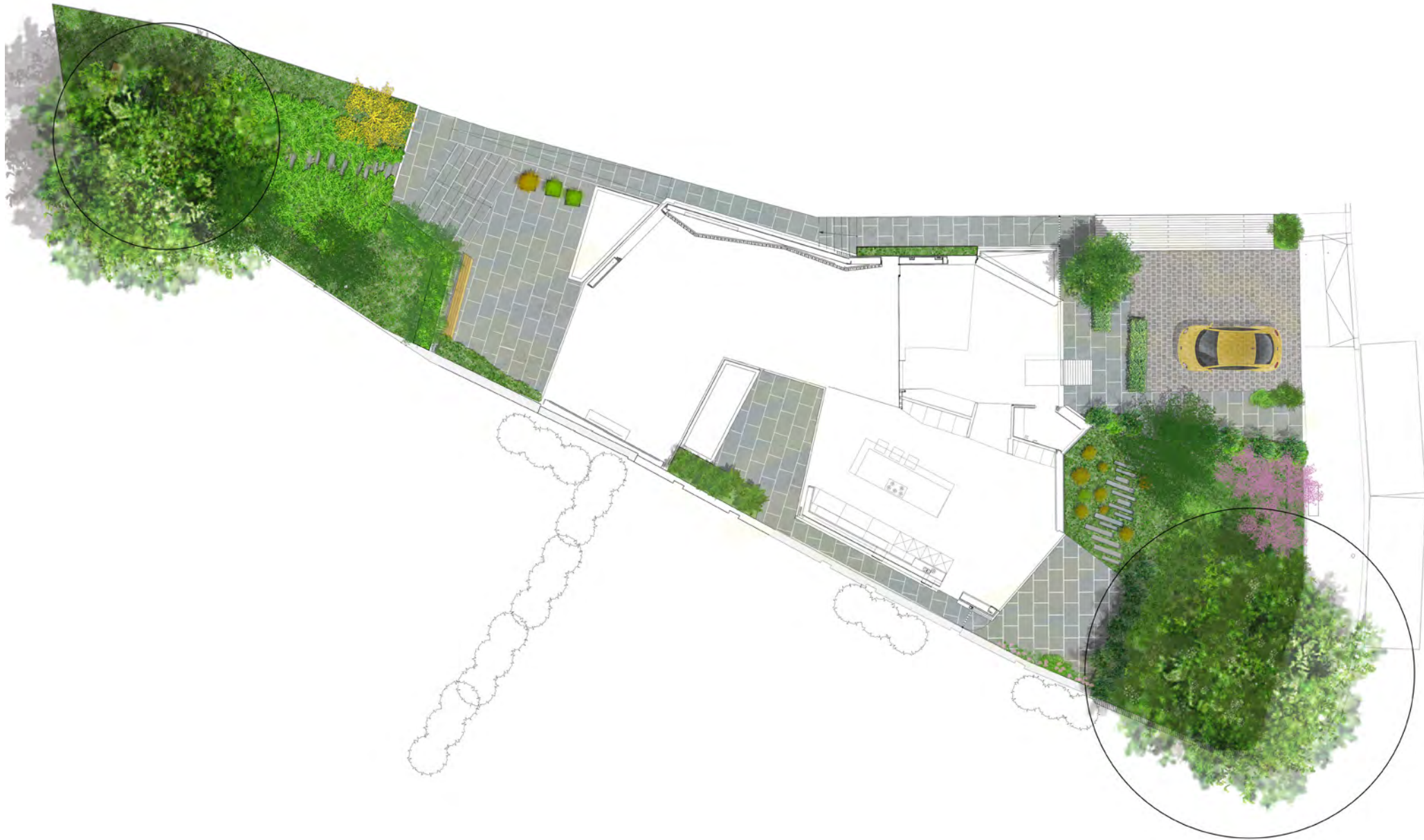
Simple mass planting of a limited number of evergreen species, with emphasis on low maintenance ground cover plants



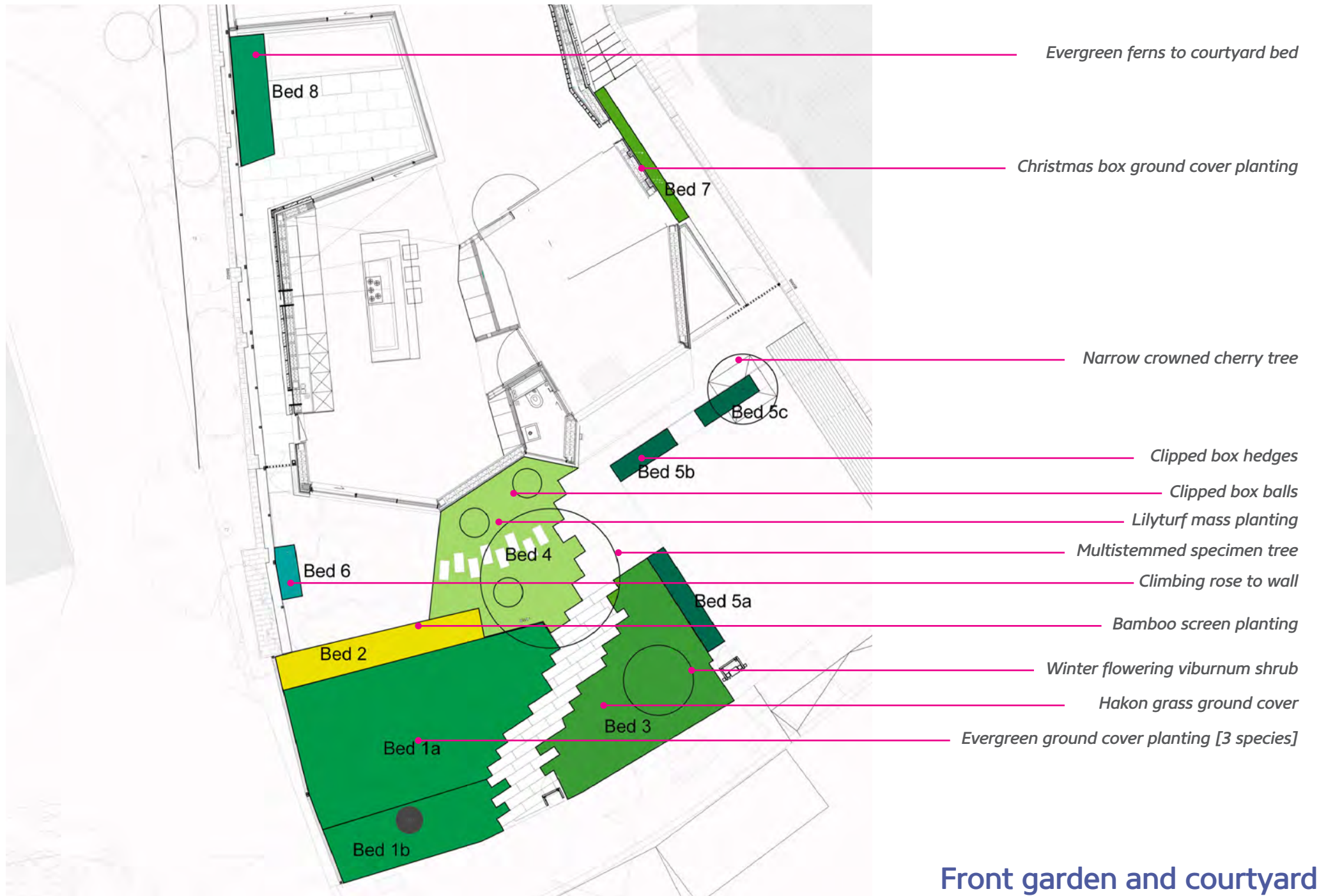
Simple foliage plants with varieties in texture and leaf form, primarily shades of green and limited flower colours.

Seasonal variation with spring, summer autumn and winter flowering plants.

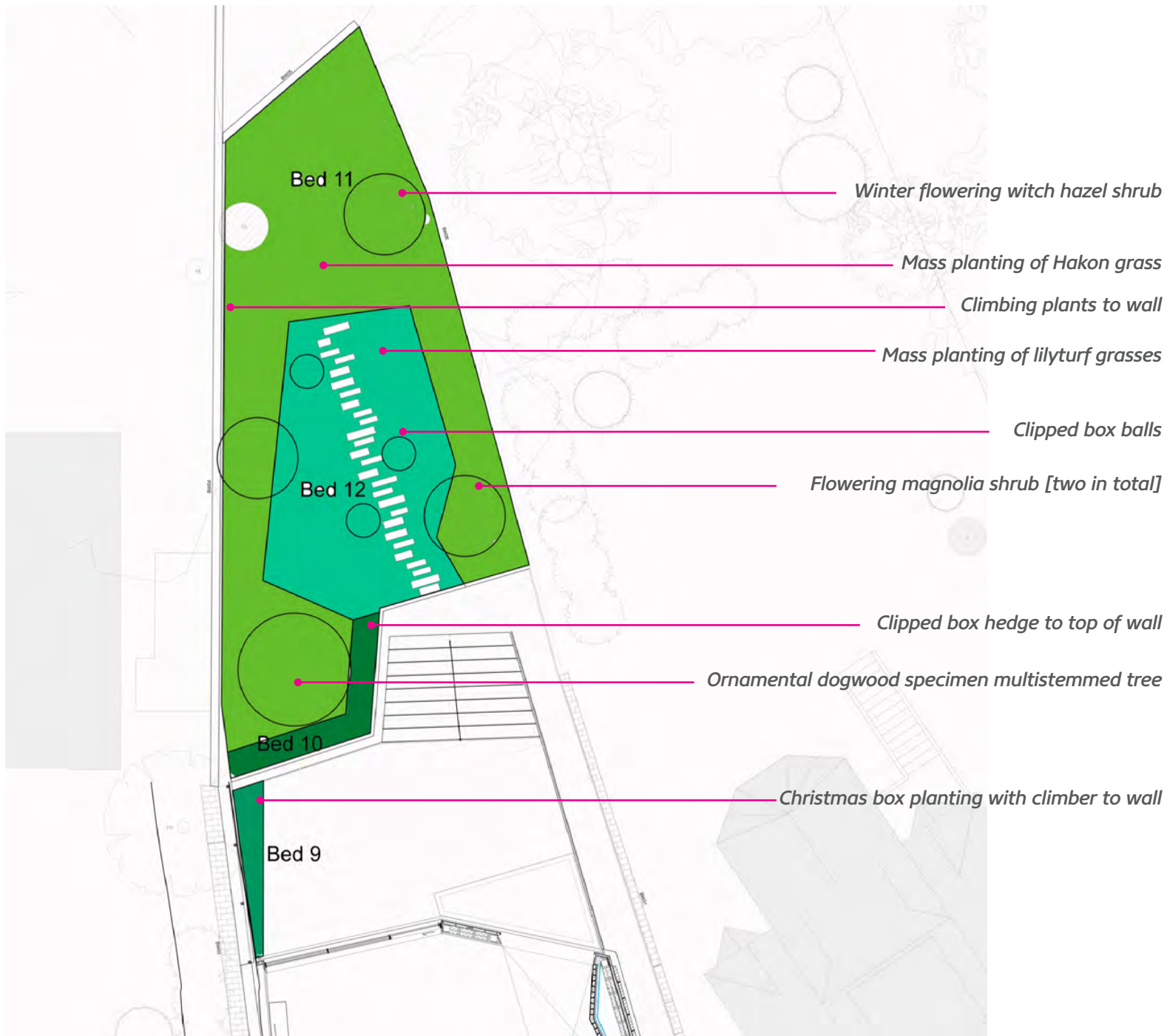
Planting style - examples



Floor plan



Front garden and courtyard



Rear garden



1A Evergreen fern ground cover



1A Evergreen foliage ground cover - Bishop's hat



1B Evergreen ground cover, white spring flowers - Perrywinkle

Planting bed 1

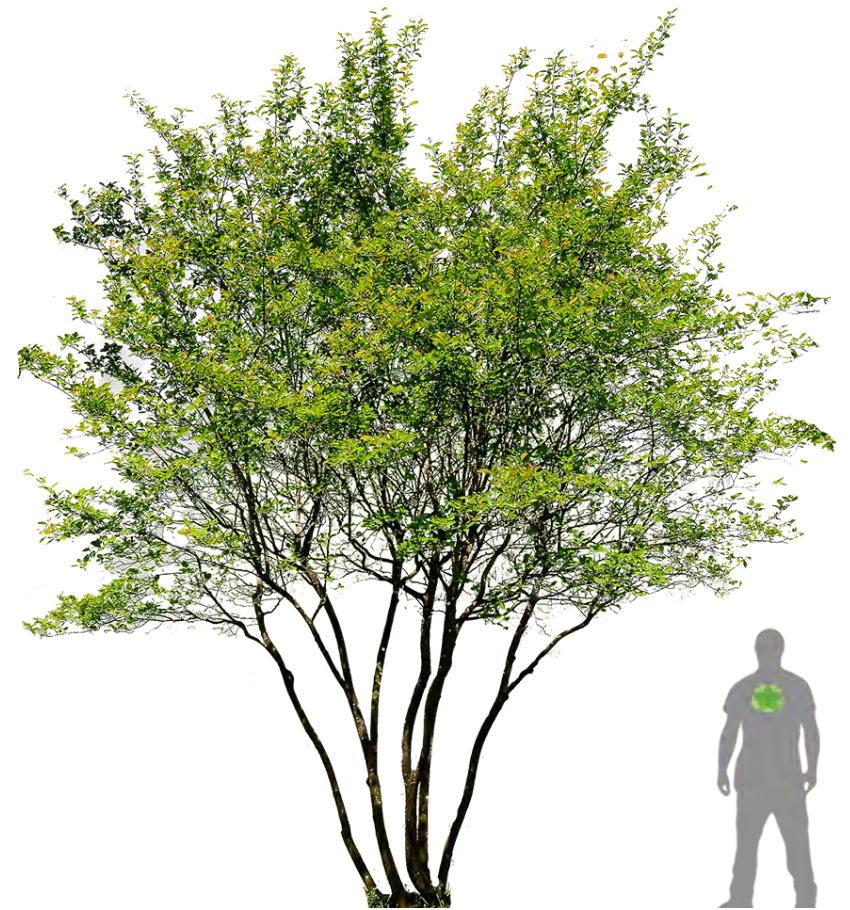


Bed 2 Red bamboo screen

Planting bed 2



Winter flowering viburnum shrub



Multistemmed specimen tree - Amelanchier



Hakon grass ground cover



Libertia



Lilyturf ground cover with evergreen clipped box balls



Planting bed 3

Planting bed 4



*Narrow crowned ornamental
cherry tree*

Planting bed 5



Clipped box hedges



Climbing rose on east wall

Planting bed 6



Small tree ferns



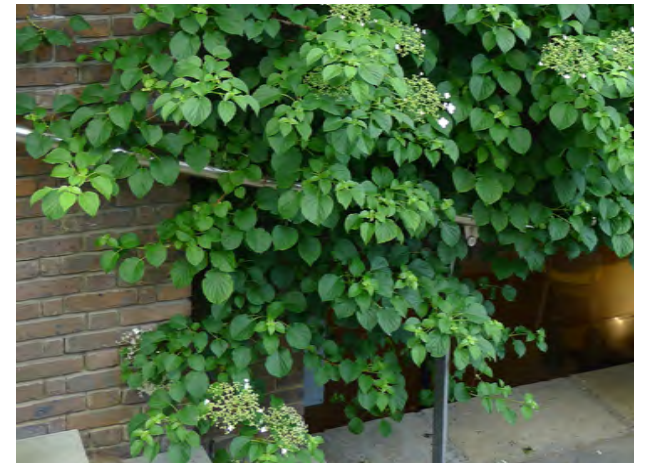
Evergreen ferns



Evergreen christmas box



Evergreen ground cover below ferns



Climbing hydrangea to wall

Planting bed 7

Planting bed 8



Climbing hydrangea to brick wall



Christmas box



Clipped box hedges

Planting bed 9

Planting bed 10



Hakon grass groundcover



Winter flowering witch hazel



Actaea matsumurae 'White Pearl'



Chinese virginia creeper to wall and fence



Magnolia stellata



Flowering Dogwood



Clipped box balls



Lilyturf ground cover planting



Black mondo grass

Bed 12

BED REF	AREA m2	SPECIES	COMMON NAME	STOCK SIZE	% BED	DENSITY/m	TOTAL
Bed 1A	32	<i>Epimedium x rubrum</i>	Bishops hat	2 litre container	70%	10	224
		<i>Polystichum setiferum</i>	Soft sheild fern	3 litre container	30%	5	48
Bed 1B	10	<i>Vinca minor alba 'Getrude Jekyll'</i>	White lesser perriwinkle	2 litre container	100%	10	100
Bed 2	7	<i>Fargesia juizhaigou 1</i>	Red bamboo	Min 25 litre container - 3m high - min 5 canes	100%		16
Bed 3	20	<i>Hakonechloa macra</i>	Hakon grass	3 litre container	100%	9	180
		<i>Viburnum x bodnantense 'Dawn'</i>	Viburnum	50 litre container min 2.0m high specimen			1
Bed 4	20	<i>Liriope muscari</i>	Lily turf	3 litre container	65%	10	130
		<i>Buxus sempervirens</i>	Box	Pre clipped ball. 50cm dia 15Litre container	10%		3
		<i>Libertia formosa</i>	Satin flower	3 litre container	25%	10	50
		<i>Amelanchier lamarkii</i>	Mespil	3.0 - 3.5m high multistem specimen min 5 stems CG			1
Bed 5A	4	<i>Buxus sempervirens</i>	Box	60-80cm high 10 litre container	100%	3/m	12
Bed 5B	2	<i>Buxus sempervirens</i>	Box	60-80cm high 10 litre container	100%	3/m	6
Bed 5C	2	<i>Buxus sempervirens</i>	Box	60-80cm high 10 litre container	100%	3/m	6
		<i>Prunus x hillieri 'spire'</i>	Cherry	18-20cm girth Airpot CG			1
Bed 6	1	<i>Rosa 'Alfred Carriere'</i>	Climbing Rose	20 litre container specimen, 1.5m high. On frame			1
		<i>Liriope muscari</i>	Lily turf	3 litre container	100%	10	10
Bed 7	2	<i>Sarcococca hookeriana var humilis</i>	Christmas Box	3 litre container	100%	10	20
Bed 8	4	<i>Pachysandra procumbens</i>	Japanese spurge	3 litre container	50%	10	20
		<i>Hydrangea petiolaris</i>	Climbing lacecap	15 litre specimen on canes			2
		<i>Polystichum setiferum</i>	Soft sheild fern	3 litre container	50%	7	14
		<i>Dicksonia antartica</i>	Tree fern	130cm high			1
		<i>Dicksonia antartica</i>	Tree fern	60cm high			1
Bed 9	3	<i>Sarcococca hookeriana var humilis</i>	Christmas Box	3 litre container	100%	9	27
		<i>Hydrangea petiolaris</i>	Climbing lacecap	15 litre specimen on canes			2
Bed 10	5	<i>Buxus sempervirens</i>	Box	Min 80-100cm high 15 litre container	100%	4	20
Bed 11	65	<i>Hakonechloa macra</i>	Hakon grass	3 litre container	80%	9	468
		<i>Actaea matsumurae 'White Pearl'</i>	Baneberry	3 litre container	20%	10	130
		<i>Cornus kousa 'chinensis'</i>	Japenese dogwood	2.5 - 3.0m high multistem CG			1
		<i>Magnolia 'stellata'</i>	Magnolia	2.0 - 2.5m multistem CG			2
		<i>Hamamelis x intermedia 'Arnold promise'</i>	Witch Hazel	2.0 -2.5m jigh specimen min 45litre container			1
		<i>Rosa 'climbing iceberg'</i>	Climbing rose	20 litre container specimen, 1.5m high. On frame			1
		<i>Parthenocisus henryana</i>	Chinese virginia creeper	12 litre container			5
Bed 12	33	<i>Liriope muscari</i>	Lily turf	3 litre container	70%	10	231
		<i>Ophiopogon planiscapus ' nigrescens'</i>	Black Mondo grass	3 litre container	30%	10	99
		<i>Buxus sempervirens</i>	Box	Pre clipped ball. 50cm dia 15Litre container			5