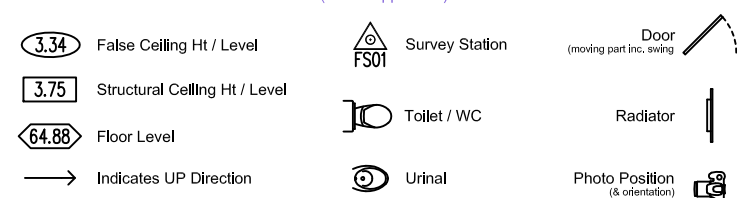


This survey has been produced at the survey scale detailed below with its accuracy commensurate with the indicated scale and should only be used for its original intended purpose. Any scaling should only be undertaken using a statistic media print produced using the original data. The plotted scale may differ for presentation purposes from the survey scale.

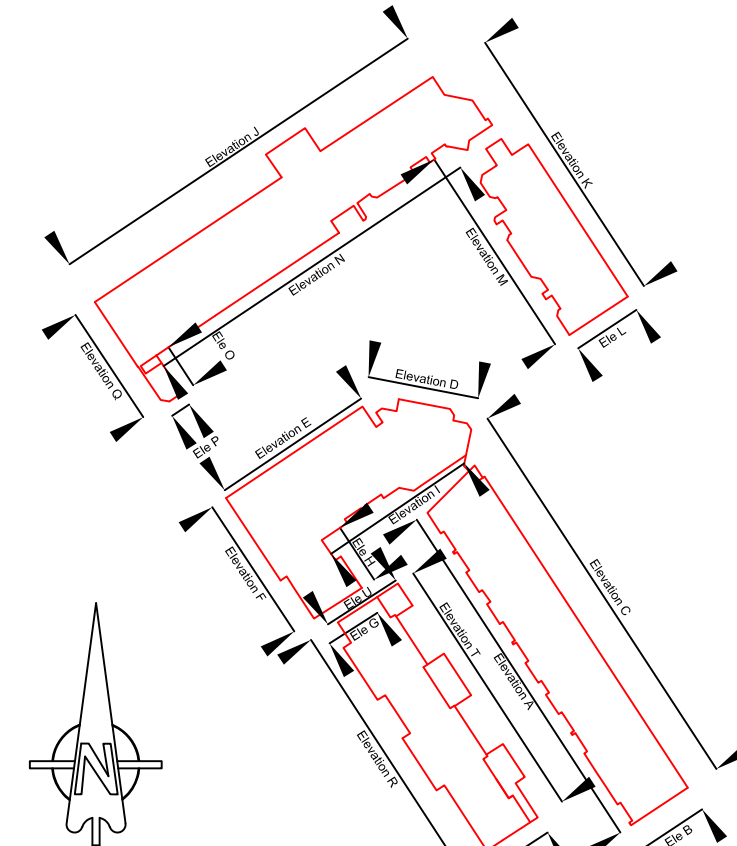
It is for the use only of the party to whom it has been addressed and no responsibility is accepted to any third party for the whole or part of its contents. This survey has been prepared on the basis that all information and facts, which may affect the survey, have been disclosed to Forbix Surveys Ltd by all parties concerned and no liability, nor responsibility can be accepted, unless full disclosure has been made.

All ground features that were visible at the time of the survey have been located, however there may have been items obscured. Pipe slots and flow direction have been visually assessed from the surface and should be considered as approximate only.

†† Data remains in the ownership of Forney Surveys Ltd and any discrepancies between this survey and any other information should be reported to info@forneysurveys.co.uk



AB	Alphabet	GU	Gully
AC	Account	HL	Held
AD	Account	HL	Held
AE	Aerial Scout	HT	Hunter
AF	Arm	HT	Hunter
AG	Arm	HT	Hunter
AH	Arm	HT	Hunter
AI	Arm	HT	Hunter
AL	Arm	HT	Hunter
AM	Arm	HT	Hunter
AN	Arm	HT	Hunter
AO	Arm	HT	Hunter
AP	Arm	HT	Hunter
AQ	Arm	HT	Hunter
AR	Arm	HT	Hunter
AS	Arm	HT	Hunter
AT	Arm	HT	Hunter
AV	Arm	HT	Hunter
AW	Arm	HT	Hunter
AX	Arm	HT	Hunter
AY	Arm	HT	Hunter
AZ	Arm	HT	Hunter
BA	Arm	HT	Hunter
BB	Arm	HT	Hunter
BC	Arm	HT	Hunter
BD	Arm	HT	Hunter
BE	Arm	HT	Hunter
BF	Arm	HT	Hunter
BG	Arm	HT	Hunter
BH	Arm	HT	Hunter
BI	Arm	HT	Hunter
BJ	Arm	HT	Hunter
BK	Arm	HT	Hunter
BL	Arm	HT	Hunter
BM	Arm	HT	Hunter
BN	Arm	HT	Hunter
BO	Arm	HT	Hunter
BP	Arm	HT	Hunter
BQ	Arm	HT	Hunter
BR	Arm	HT	Hunter
BS	Arm	HT	Hunter
BT	Arm	HT	Hunter
BV	Arm	HT	Hunter
BW	Arm	HT	Hunter
BX	Arm	HT	Hunter
BY	Arm	HT	Hunter
BZ	Arm	HT	Hunter
CA	Arm	HT	Hunter
CB	Arm	HT	Hunter
CC	Arm	HT	Hunter
CD	Arm	HT	Hunter
CE	Arm	HT	Hunter
CF	Arm	HT	Hunter
CG	Arm	HT	Hunter
CH	Arm	HT	Hunter
CI	Arm	HT	Hunter
CJ	Arm	HT	Hunter
CK	Arm	HT	Hunter
CL	Arm	HT	Hunter
CM	Arm	HT	Hunter
CN	Arm	HT	Hunter
CO	Arm	HT	Hunter
CP	Arm	HT	Hunter
CQ	Arm	HT	Hunter
CR	Arm	HT	Hunter
CS	Arm	HT	Hunter
CT	Arm	HT	Hunter
CU	Arm	HT	Hunter
CV	Arm	HT	Hunter
CW	Arm	HT	Hunter
CX	Arm	HT	Hunter
CY	Arm	HT	Hunter
CZ	Arm	HT	Hunter
DA	Arm	HT	Hunter
DB	Arm	HT	Hunter
DC	Arm	HT	Hunter
DD	Arm	HT	Hunter
DE	Arm	HT	Hunter
DF	Arm	HT	Hunter
DG	Arm	HT	Hunter
DH	Arm	HT	Hunter
DI	Arm	HT	Hunter
DJ	Arm	HT	Hunter
DK	Arm	HT	Hunter
DL	Arm	HT	Hunter
DM	Arm	HT	Hunter
DN	Arm	HT	Hunter
DO	Arm	HT	Hunter
DP	Arm	HT	Hunter
DQ	Arm	HT	Hunter
DR	Arm	HT	Hunter
DS	Arm	HT	Hunter
DT	Arm	HT	Hunter
DU	Arm	HT	Hunter
DV	Arm	HT	Hunter
DW	Arm	HT	Hunter
DX	Arm	HT	Hunter
DY	Arm	HT	Hunter
DZ	Arm	HT	Hunter
EA	Arm	HT	Hunter
EB	Arm	HT	Hunter
EC	Arm	HT	Hunter
ED	Arm	HT	Hunter
EE	Arm	HT	Hunter
EF	Arm	HT	Hunter
EG	Arm	HT	Hunter
EH	Arm	HT	Hunter
EI	Arm	HT	Hunter
EJ	Arm	HT	Hunter
EK	Arm	HT	Hunter
EL	Arm	HT	Hunter
EM	Arm	HT	Hunter
EN	Arm	HT	Hunter
EO	Arm	HT	Hunter
EP	Arm	HT	Hunter
EQ	Arm	HT	Hunter
ER	Arm	HT	Hunter
ES	Arm	HT	Hunter
ET	Arm	HT	Hunter
EU	Arm	HT	Hunter
EV	Arm	HT	Hunter
EW	Arm	HT	Hunter
EX	Arm	HT	Hunter
EY	Arm	HT	Hunter
EZ	Arm	HT	Hunter
FA	Arm	HT	Hunter
FB	Arm	HT	Hunter
FC	Arm	HT	Hunter
FD	Arm	HT	Hunter
FE	Arm	HT	Hunter
FF	Arm	HT	Hunter
FG	Arm	HT	Hunter
FH	Arm	HT	Hunter
FI	Arm	HT	Hunter
FJ	Arm	HT	Hunter
FK	Arm	HT	Hunter
FL	Arm	HT	Hunter
FM	Arm	HT	Hunter
FN	Arm	HT	Hunter
FO	Arm	HT	Hunter
FP	Arm	HT	Hunter



Survey Grid: Local Grid ☐ Nat. Grid (CGCR08) ☒ Nat. Grid (CGCR08) ☐ Existing Grid ☐
Survey Datum: Local Datum ☐ Nat. Grid (CGCR08) ☒ Nat. Grid (CGCR08) ☐ O.S.R.M. ☐

The survey grid & level datum relate to the Ordnance Survey active GPS network (OSGB36) established via Leica SmartNET, plotted with no scale factor applied.

- Where manholes / ICs have been lifted they have been annotated as "star-bursts" showing incoming / outgoing pipes and ducts. Drainage runs have not been linked together unless specified at the time of commission.
- All arrows on stairs, steps & ramps etc indicate an UP direction unless otherwise stated.
- Door sizes are measured as the "moving part" of the door.

Rev	Date	Description	CA
Client			



measure* manage* deliver*

FormbySurveys

Formby Surveys Ltd
6 Edinburgh Road
Formby
Merseyside
L37 6EP

T +44 (0)1704 831 482
F +44 (0)1704 831 485
E info@formbysurveys.com
W www.formbysurveys.com



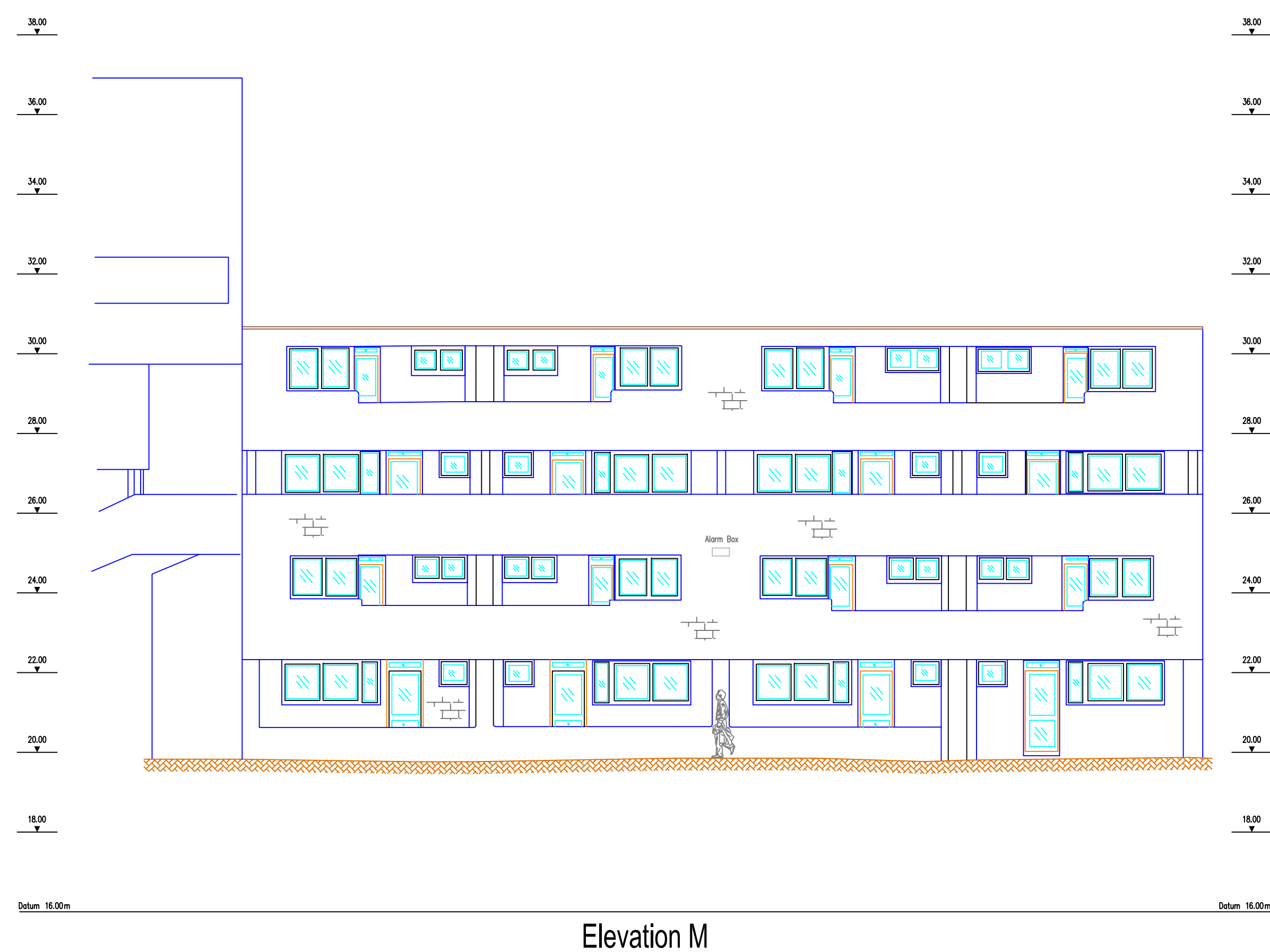
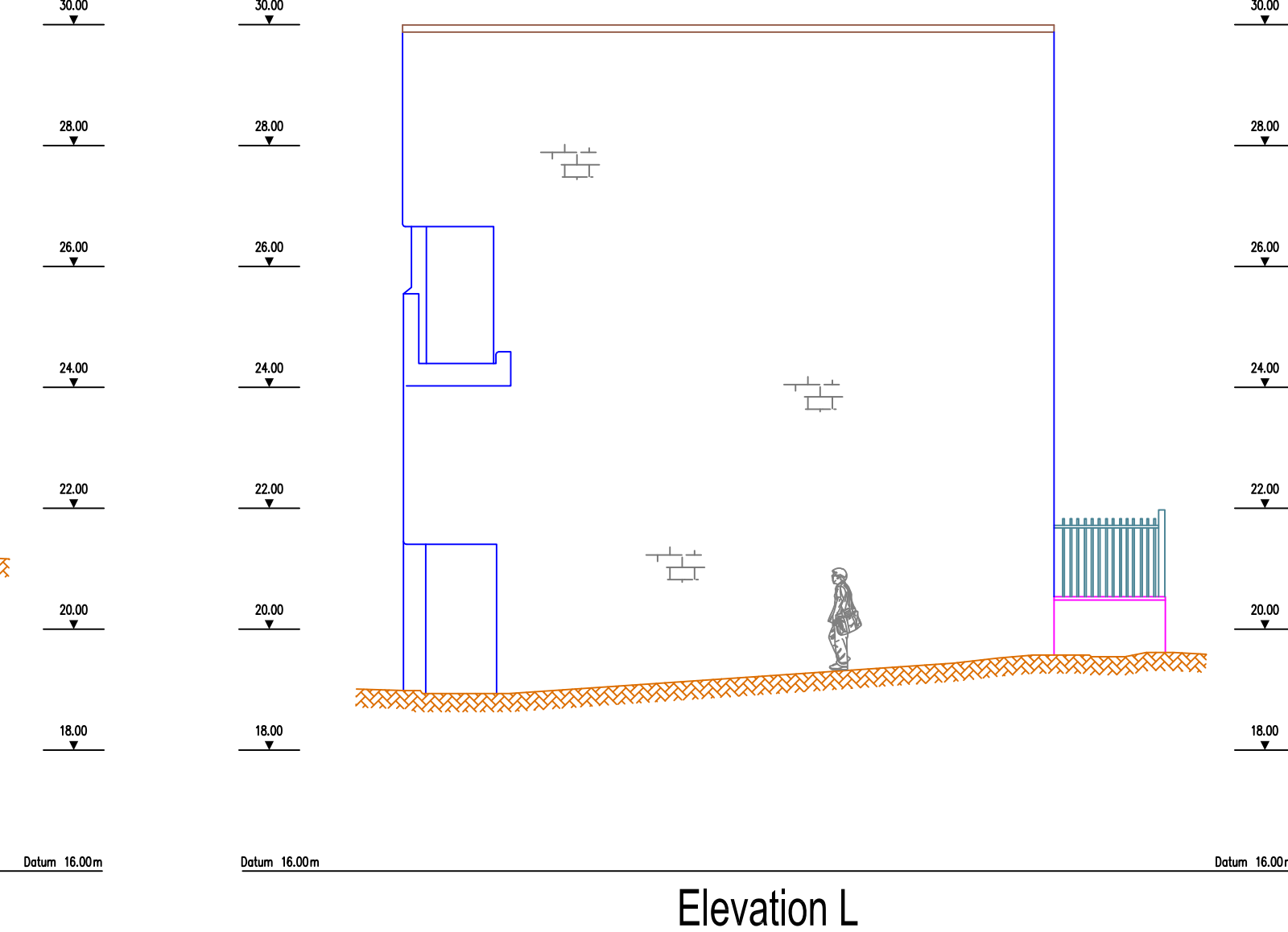
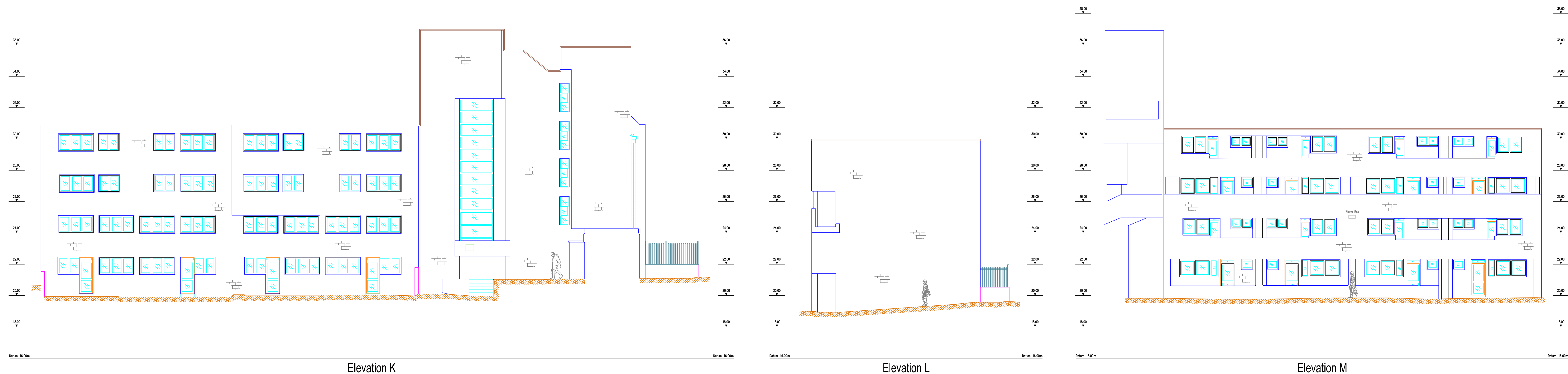
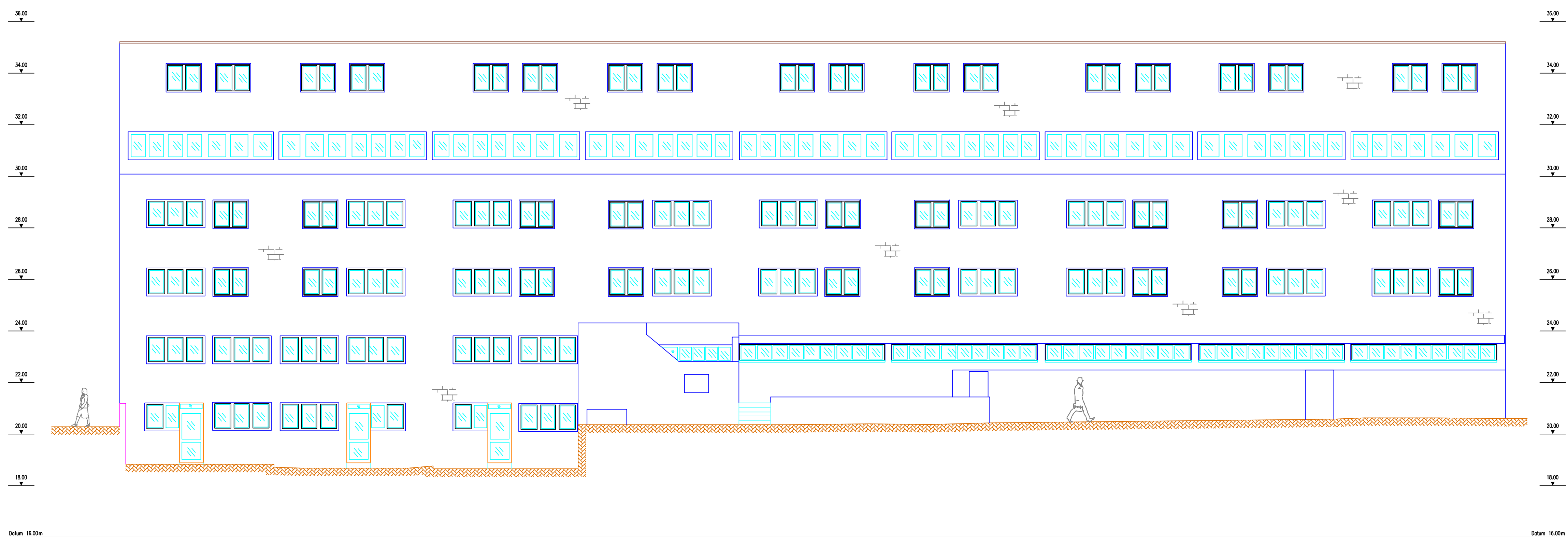
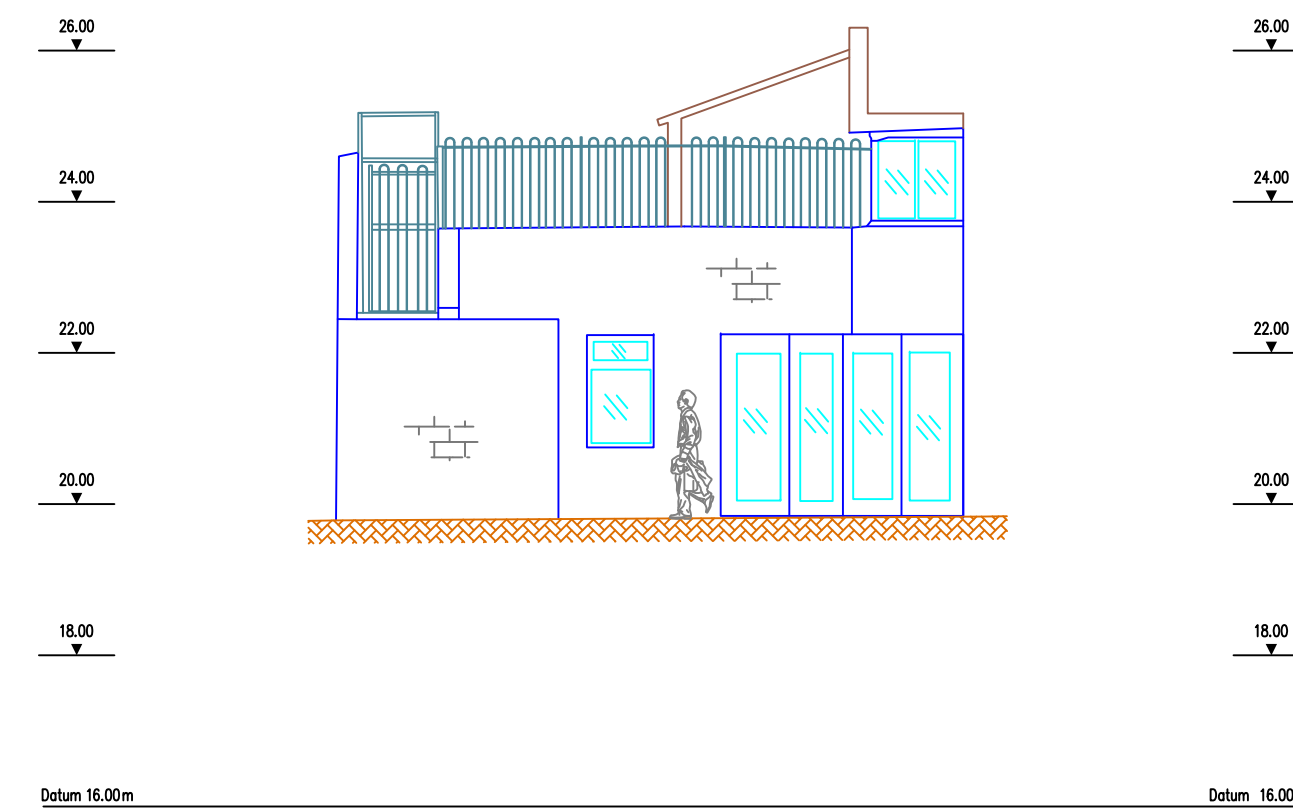
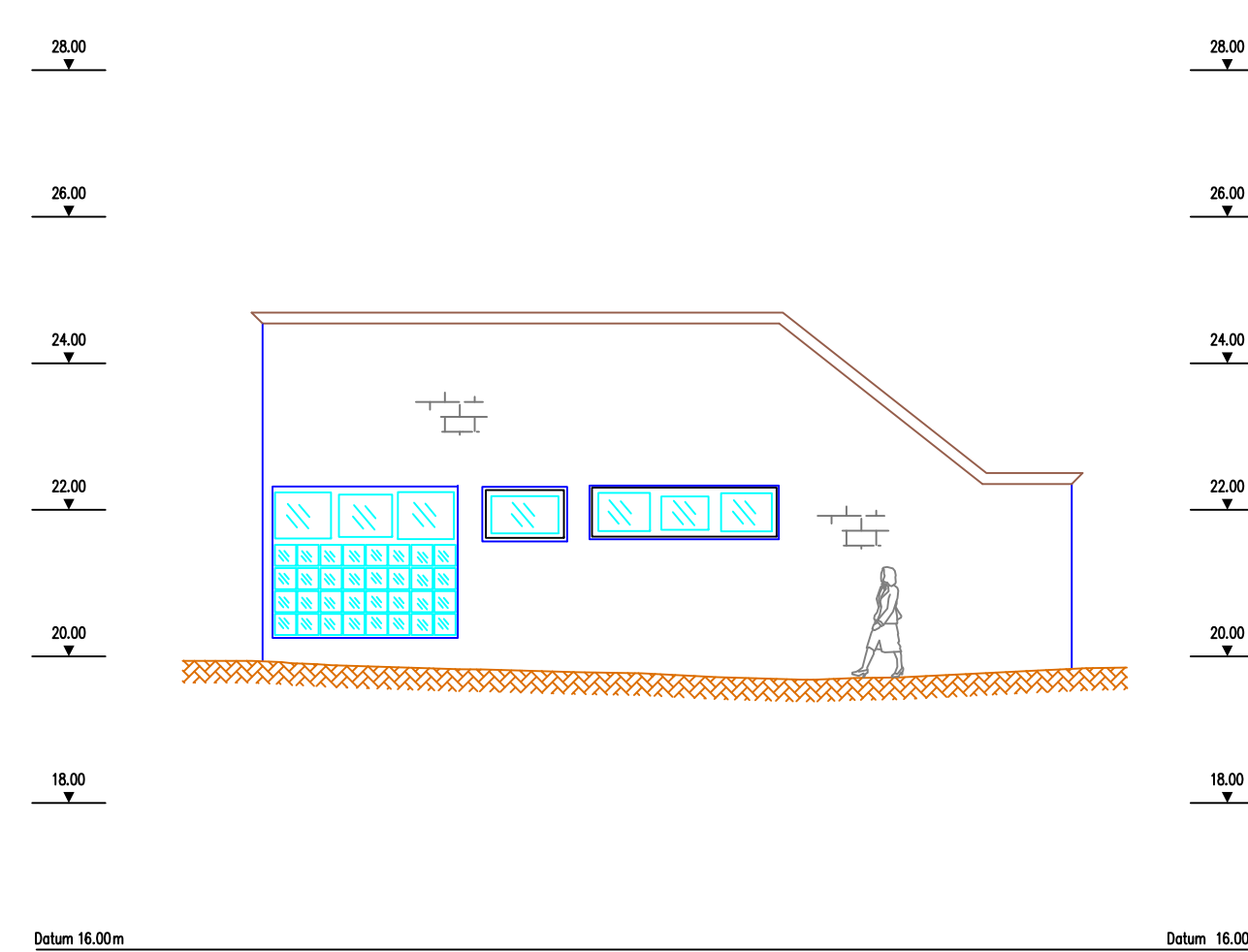
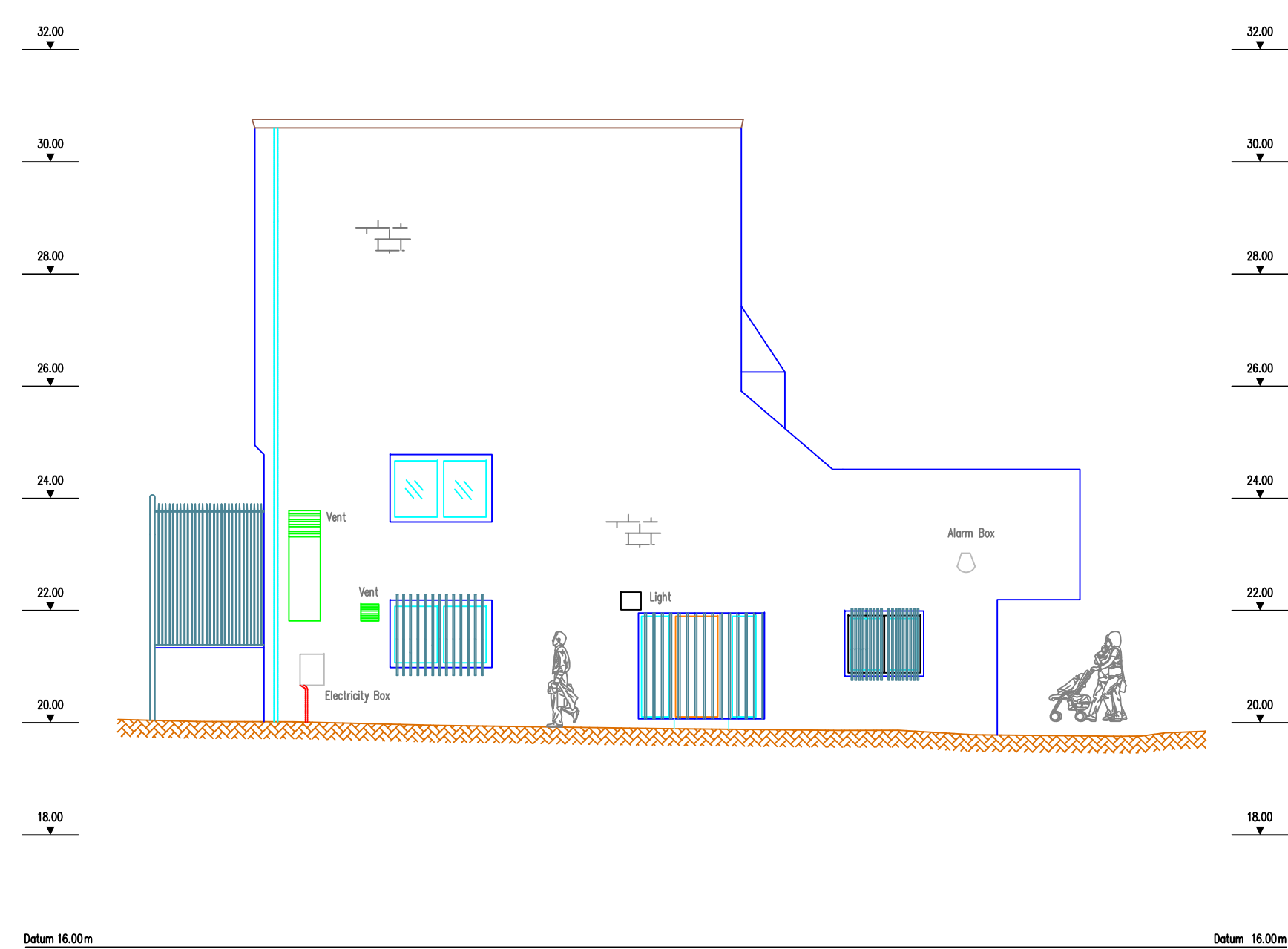
Monica Shaw Street, Purchase Street
London, NW1 1EY

Plotted Scale: A0@1:100 0.0 2.0 4.0 6.0m

NHS Survey Studies: S1100			

Surveyor: AJR	CAD: MT & DMH	Checker: JO	Rev:
---------------	---------------	-------------	------





This survey has been produced at the survey scale detailed below with its accuracy commensurate with the indicated scale and should only be used for its original intended purpose. Any scaling should only be undertaken using a stable media print produced using the original data. The plotted scale may differ (for presentation purposes) from the survey scale.

It is for the use only of the party to whom it has been addressed and no responsibility is accepted to any third party for the whole or part of its contents. This survey has been prepared on the basis that all information and facts, which may affect the survey, have been disclosed to Forbix Surveys Ltd by all parties concerned and no liability, nor responsibility can be accepted, unless full disclosure has been made.

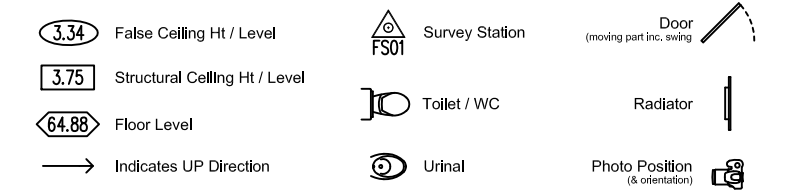
All ground features that were visible at the time of the survey have been located; however there may have been items obscured. Pipe along the line direction have been visually assessed from the surface and should be considered as approximate only.

All data remains in the ownership of Foris Surveys Ltd and any discrepancies between this survey and any other information should be reported to Foris Surveys Ltd.

	0	1	2	3	4	5	6	7	8	9	10	11	12	13	14	15	16	17	18	19	20	21	22	23	24	25	26	27	28	29	30	31	32	33	34	35	36	37	38	39	40	41	42	43	44	45	46	47	48	49	50	51	52	53	54	55	56	57	58	59	60	61	62	63	64	65	66	67	68	69	70	71	72	73	74	75	76	77	78	79	80	81	82	83	84	85	86	87	88	89	90	91	92	93	94	95	96	97	98	99
0	0	1	2	3	4	5	6	7	8	9	10	11	12	13	14	15	16	17	18	19	20	21	22	23	24	25	26	27	28	29	30	31	32	33	34	35	36	37	38	39	40	41	42	43	44	45	46	47	48	49	50	51	52	53	54	55	56	57	58	59	60	61	62	63	64	65	66	67	68	69	70	71	72	73	74	75	76	77	78	79	80	81	82	83	84	85	86	87	88	89	90	91	92	93	94	95	96	97	98	99

Measured Building Legend

(where applicable)

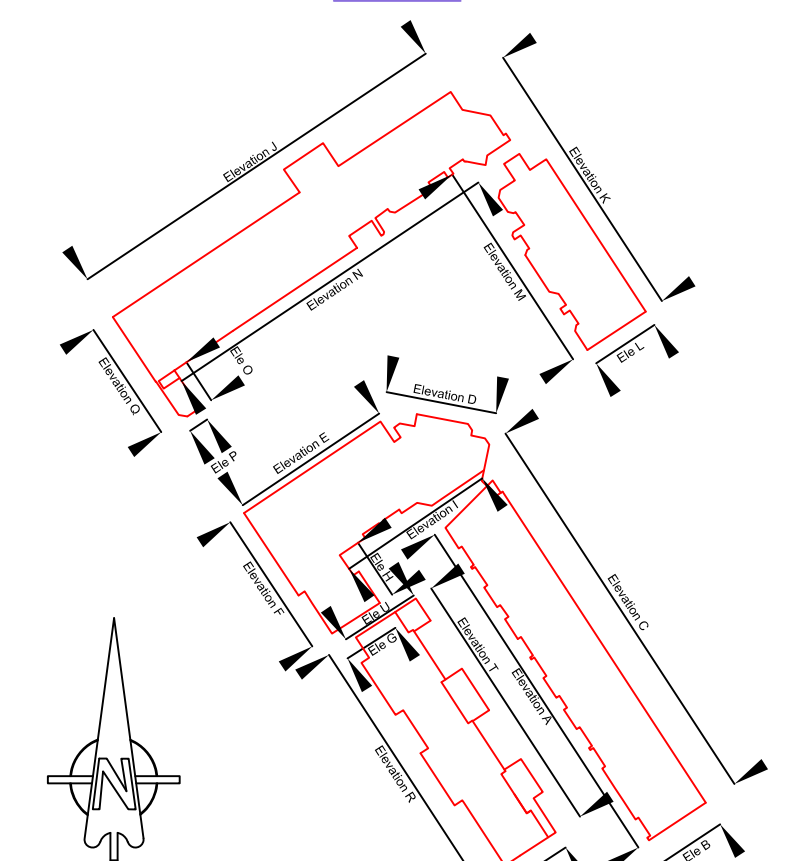


Abbreviations

(where applicable)

[illegible]

Key Plan



Grid & Datum

Survey Grid: Local Grid ☐ Nat. Grid (JCR0000) ☒ Nat. Grid (JCR0000) ☐ Existing Grid ☐
Survey Datum: Local Datum ☐ Nat. Grid (JCR0000) ☒ Nat. Grid (JCR0000) ☐ O.S.D.M. ☐

The survey grid & level datum relate to the Ordnance Survey active GPS network (OSGB36) established via Leica SmartNET, plotted with no scale factor applied.

General Notes

1. Where manholes / ICs have been lifted they have been annotated as "star-bursts" showing incoming / outgoing pipes and ducts. Drainage runs have not been linked together unless specified at the time of commission.
2. All arrows on stairs, steps & ramps etc indicate an UP direction unless otherwise stated.
3. Door sizes are measured as the "moving part" of the door.

