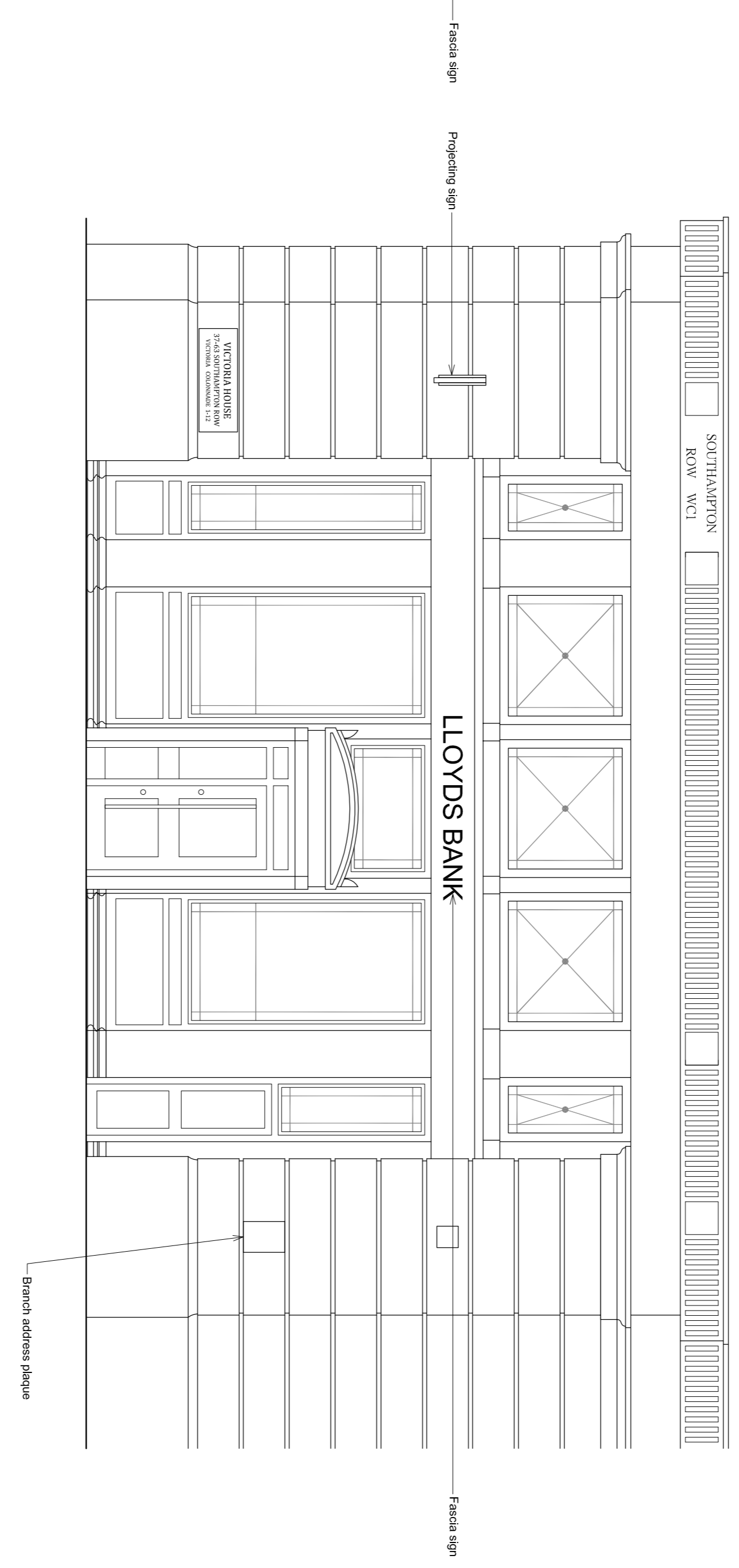


Elevation to Vernon Place



Elevation to Southampton Row

REV	DATE	REVISION	INITIALS

**LLOYDS BANKING GROUP**

ALL DIMENSIONS TO BE REFERRED TO AS DIMENSIONS UNLESS SPECIFIED TO BE OTHERWISE. DIMENSIONS TO BE GIVEN IN CONNECTION WITH PROJECT SPECIFICATIONS. THIS DRAWING IS THE PROPERTY OF LLOYDS BANKING GROUP AND COPYRIGHT IS RESERVED BY THEM. THE DRAWINGS ISSUED ON CONDITION THAT THEIR NOT BE REPRODUCED OR DISCLOSED BY OR TO ANY UNAUTHORIZED PERSONS WITHOUT THE WRITTEN PERMISSION OF LLOYDS BANKING GROUP. ALL MODIFIED DRAWINGS SHOULD BE RETURNED TO LLOYDS BANKING GROUP.

**GROUP PROPERTY**

BRISTOL - PO Box 112, Clifton House, Canon Way, BRISTOL, BS99 7LB  
 EDINBURGH - Spittal Square, 12 Spittal Square, EDINBURGH EH1 1EN  
 LONDON - 150 Old Broad Street, LONDON EC2N 1JL  
 LONDON - 150 Old Broad Street, LONDON EC2N 1JL

**PROJECT ADDRESS**

Brand - Lloyds TSB - Bos  
 London, Southampton Row, Victoria House  
 Victoria House  
 LONDON WC1B 9HR

**SCALE**

A1 - 1:50  
 A3 - 1:100

**DATE**

23.07.2017

**DRAWING DESCRIPTION**

Existing Elevations

**DRAWN BY**

TJM/W

**DRAWING NUMBER**

50163400-AREX-E1-0200

**REVISION**

-