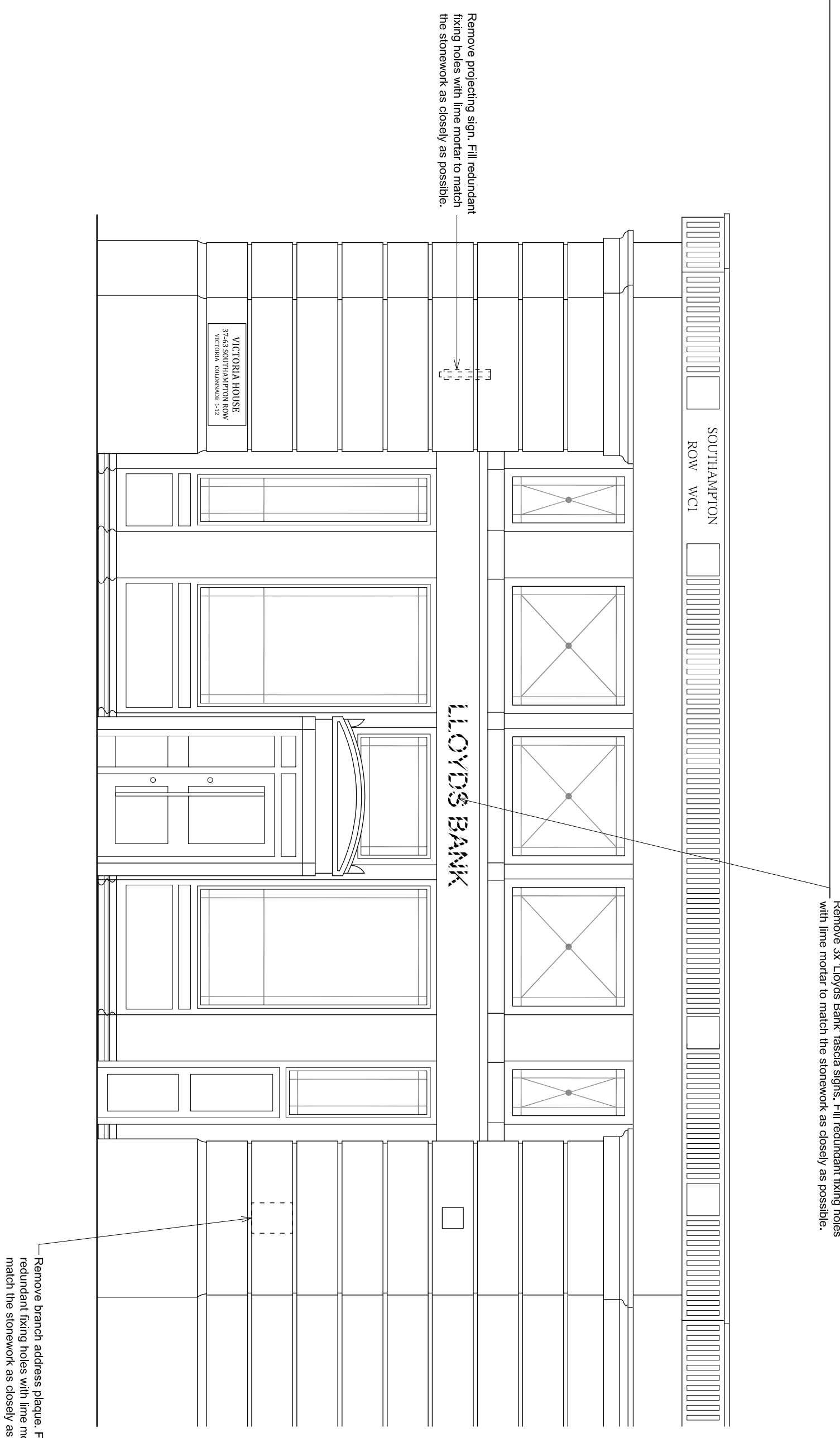


Elevation to Vernon Place



Elevation to Southampton Row

REV	DATE	REVISION	INITIALS

<b>LLOYDS BANKING GROUP</b>	
ALL DIMENSIONS TO BE REFERRED TO AS COMMENCING UNLESS STATED OTHERWISE. THIS DRAWING IS THE PROPERTY OF LLOYDS BANKING GROUP AND COPYRIGHT IS RESERVED BY THEM. THE DRAWINGS ISSUED ON CONDITION THAT THEIR NOT BE REPRODUCED OR DISCLOSED BY OR TO ANY UNAUTHORIZED PERSONS WITHOUT THE WRITTEN PERMISSION OF LLOYDS BANKING GROUP. ALL MODIFIED DRAWINGS SHOULD BE RETURNED TO LLOYDS BANKING GROUP.	
<b>GROUP PROPERTY</b>	
BRISTOL - PO Box 112, Queens House, Cannon Wharf, BRISTOL, BS99 7JA EDINBURGH - Spittal Square, 12 Belford Crossway, Edinburgh, ED11 4EN LONDON - 150 Old Broad Street, LONDON, EC2N 1JL MILWAUKEE - 1500 Wisconsin Street, MILWAUKEE, WI 53102	
<b>PROJECT ADDRESS</b>	<b>SCALE</b>
Brand - Lloyd's TSB - Bos	A1 - 1:50
Victoria House	A3 - 1:100
LONDON W1C1B 9HR	DATE
<b>DRAWING DESCRIPTION</b>	23.07.2017
Proposed Elevations	DRAWN BY
	TJM/W
<b>DRAWING NUMBER</b>	REVISION
50163400-AR01-E1-0210	-