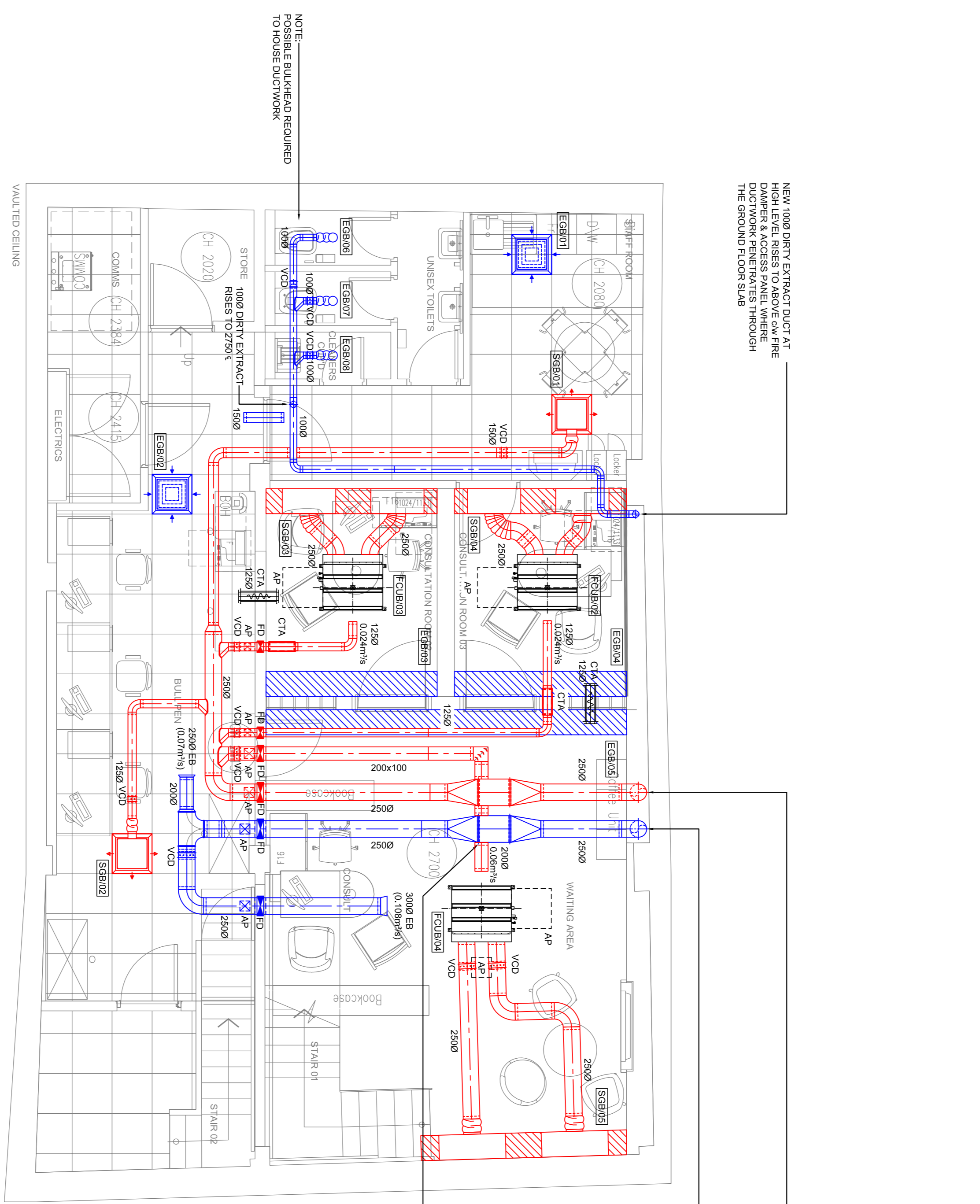


GRILLE REF	LOCATION	MODEL	AIR VOLUME (m <sup>3</sup> /s)	OVERALL DIMENSIONS (mm)	NECK DIMENSIONS (mm)	SPIGOT SIZE (mm)	OPTIONS
EG B01	STAFF ROOM	DGA 4	0.040	595x595	450x450	1500	RAL9010 CW SIDE ENTRY LINED PLENUM BOX
EG B02	BILL PEN	DGA 4	0.030	595x595	450x450	1280	RAL9010 CW SIDE ENTRY LINED PLENUM BOX
EG B03	CONSULTATION ROOM 02	GSL 9 SILOT	0.200	2500x375.5	-	-	RAL 9010 CW CONT. G.S.L. 9/27/2F. 2.5m LONG EXACT LENGTH T.B.C. ON SITE
EG B04	CONSULTATION ROOM 03	GSL 9 SILOT	0.200	2500x375.5	-	-	RAL 9010 CW CONT. G.S.L. 9/27/2F. 2.5m LONG EXACT LENGTH T.B.C. ON SITE
EG B05	WAITING AREA	GSL 4 SILOT	0.224	3400x290.5	-	-	RAL 9010 CW CONT. G.S.L. 9/27/2F. 5.4m LONG EXACT LENGTH T.B.C. ON SITE
EG B06	TOILETS	GXD 100	0.008	1370	-	1000	RAL 9010
EG B07	TOILETS	GXD 100	0.008	1370	-	1000	RAL 9010
EG B08	CLEANERS CUPBOARD	GXD 100	0.008	1370	-	1000	RAL 9010

BASEMENT - SUPPLY GRILLE SCHEDULE - (GILBERTS) GRILLE REF	LOCATION	MODEL	AIR VOLUME (m <sup>3</sup> /s)	OVERALL DIMENSIONS (mm)		SPIGOT SIZE (mm)	OPTIONS
				OVERALL DIMENSIONS (mm)	NECK DIMENSIONS (mm)		
SG B01	STAFF ROOM	DGA4450x450(594x594)/MPP150	0.032	595x595	450x450	1500	RAL9010 CW SIDE ENTRY LINED PLENUM BOX
SG B02	BILL PEN	DGA4450x450(594x594)/MPP150	0.030	595x595	450x450	1280	RAL9010 CW SIDE ENTRY LINED PLENUM BOX
SG B03	CONSULTATION RM 02	GSL 9 SILOT	0.200	2500x375.5	-	2500	CONTINUOUS 2.5m LONG G.S.L. 9/27/2F. LENGTH T.B.C. ON SITE. RAL 9010, 2m x 800mm LONG LINED PLENUM BOXES CW SIDE ENTRY
SG B04	CONSULTATION RM 03	GSL 9 SILOT	0.200	2500x375.5	-	2500	CONTINUOUS 2.5m LONG G.S.L. 9/27/2F. LENGTH T.B.C. ON SITE. RAL 9010, 2m x 800mm LONG LINED PLENUM BOXES CW SIDE ENTRY
SG B05	WAITING AREA	GSL 4 SILOT	0.224	3000x290.5	-	2500	CONTINUOUS 3.0m LONG G.S.L. 9/27/2F. LENGTH T.B.C. ON SITE. RAL 9010, 2m x 1000mm LONG LINED PLENUM BOXES CW SIDE ENTRY



NEW 1000 DIRTY EXTRACT DUCT AT 2250mm TO HOUSE DUCTWORK THROUGH THE GROUND FLOOR SLAB

NEW 2500 SUPPLY & EXTRACT DUCTS TO HOUSE DUCTWORK THROUGH THE GROUND FLOOR SLAB

NEW 2500 EXTRACT DUCT AT 2250mm TO HOUSE DUCTWORK THROUGH THE GROUND FLOOR SLAB

NOTE: POSSIBLE BULKHEAD REQUIRED TO HOUSE DUCTWORK

AP POINTERS 600 x 600 ACCESS PANEL REQUIRED TO SIDE OF FCU

DOWNERS 300 x 300 ACCESS PANEL REQUIRED TO THE FRONT OF FCU

NEW 2500 SUPPLY & EXTRACT DUCTS AT HIGH LEVEL EACH SIDE TO HOUSE DUCTWORK THROUGH THE GROUND FLOOR SLAB

GENERAL NOTES	
1.	ALL DUCTWORK AND FITTINGS TO BE FABRICATED AND INSTALLED IN ACCORDANCE WITH BWH14 AND AS DETAILED ON ALL DUCTWORK PHYSICAL SIZES LOCATION AND HEIGHT TO BE CONFIRMED BY W/M OF SITE SIZES.
2.	ALL SUPPLY AIR DUCTWORK TO BE THERMALLY INSULATED IN ACCORDANCE WITH BS5422:2009
3.	WHERE SEVERAL RANGES OF DUCTWORK ARE INDICATED AS BEING ALLOWED FOR FULL AND PROPER APPLICATION OF THERMAL INSULATION TO EACH DUCT.
4.	ALL DUCTWORK SHALL BE SUPPORTED BY MEANS OF A LIGHTWEIGHT CHANNEL FIXED TO STRUCTURE. THESE DROP RODS DUCT SUPPORT RAIL WITH ISOLATION STRIP AND FLAT BAR KEYSER AROUND DUCT PERIPHERY.
5.	VOLUME CONTROL DAMPERS TO BE OF THE PROPOSED BLADE TYPE SUITABLE FOR RECTANGULAR AND/OR CIRCULAR DUCTWORK TO THE SIZES NOTED ON THE DRAWING
6.	ALL MECHANICAL SERVICES SHALL BE ARRANGED FOR TESTING AND COMMISSIONING IN ACCORDANCE WITH THE GUIDANCE GIVEN BY CRSE COMMISSIONING CODES AND BS84
7.	3 COPIES OF THE OPERATING AND MAINTENANCE MANUAL WILL BE HANDED OVER TO THE BUILDING OCCUPYER.

<p><b>ARTHUR MCKAY</b> A servest group company Unit 5-6, Wellington Business Centre, Quebec St, Eiland, Halifax, HX5 9AS. Tel : 0142 265 2130 Fax : 0142 223 7970 www.arthur-mckay.com.</p>		<p>Office Locations <b>Barclays</b> Carlisle, Edinburgh, Glasgow, Halifax &amp; London</p>	
<p>Client: 154-155 TOTTENHAM COURT RD LONDON, W1T 7NG</p>			
<p>Title: BASEMENT PROPOSED VENTILATION LAYOUT</p>			
<p>Drawing Status: <b>APPROVAL</b></p>			
<p>Author: CJH Scale: 1:50</p>	<p>Date: APR17</p>	<p>Project No: UT600</p>	<p>Rev: C</p>