
A213

Hampstead Green

Issued 24.08.17

2014/6449/P

Planning Condition 04

No lights, meter boxes, flues, vents or pipes, and no telecommunications equipment, alarm boxes, television aerials, satellite dishes or rooftop 'mansafe' rails shall be fixed or installed on the external face of the buildings, without the prior approval in writing of the local planning authority.

Reason: To safeguard the appearance of the premises and the character of the immediate area in accordance with the requirements of policy CS14 of the London Borough of Camden Local Development Framework Core Strategy and policy DP24 of the London Borough of Camden Local Development Framework Development Policies.

Planning Condition 04

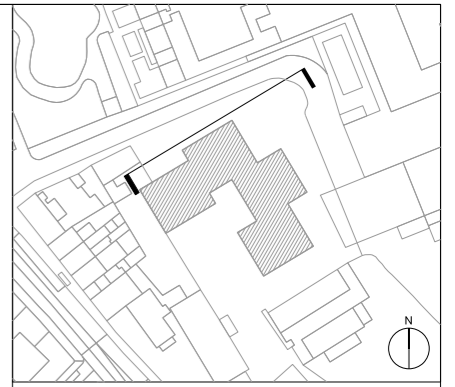
CONTENTS

ELEVATIONS KEY

- 1. North Elevation**
- 2. East Elevation**
- 3. South Elevation**
- 4. West Elevation**
- 5. Roof Plan**

APPENDIX

1. North Elevation



PLANNING CONDITION 04
 FACADE FITTINGS KEY:
 FF-1 Perforated metal grille (for further information see EX-2.4 of Planning Condition 02 document)
 FF-2 Wall mounted flush brick slot light
 FF-3 Wall mounted door access controls
 FF-4 Wall mounted car park access controls
 FF-5 Roof mounted ventilation flue
 FF-6 PPC metal Louvre

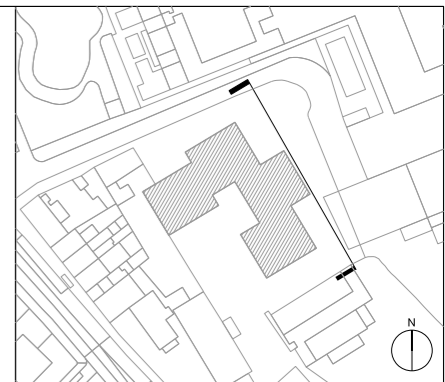
revision	date	description
SKETCH	24.08.17	For discharge of Planning Condition 04 locations of external access controls, lighting, and ventilation grilles shown
B	10.05.17	Issue of amendments to window locations
A	10.04.16	Revision to massing of Block A and B Revised parapet levels bubbled
J	01.10.14	Submitted for planning

DUGGAN MORRIS ARCHITECTS
 Duggan Morris Architects Ltd
 Unit 7, 16-24 Underwood street, London, N1 7JQ
 Telephone 020 7566 7440
 www.dugganmorrisharchitects.com

- Do not scale from this drawing
 - All dimensions to be checked on site by the Contractor
 - And such dimensions to be their responsibility
 - Report all drawing errors and omissions to the Architect
 - All dimensions in millimeters unless noted otherwise
 - If in doubt ask Contract Administrator

job title BARTRAM'S HAMPS ROAD					
drawing title/location ELEVATION NORTH					
status PLANNING					
scale 1:100 @ A1				1:200 @ A3	
job no A213	source A	zone	element (01)	drawing no. 2 01	revision B

2. East Elevation



PLANNING CONDITION 04
 FACADE FITTINGS KEY:
 FF-1 Perforated metal grille (for further information see EX-2.4 of Planning Condition 02 document)
 FF-2 Wall mounted flush brick slot light
 FF-3 Wall mounted door access controls
 FF-4 Wall mounted car park access controls
 FF-5 Roof mounted ventilation flue

SKETCH 24.08.17 For discharge of Planning Condition 04 - to allow for external access controls, lighting, and ventilation grilles shown

B	10.05.17	Minor amendments to window positions Flue locations updated
A	10.04.16	Revision to massing of Block A and B Revised parapet levels bubbled
/	01.10.14	Submitted for Planning
revision	date	

DUGGAN MORRIS ARCHITECTS
 Duggan Morris Architects Ltd
 Unit 7, 16-24 Underwood street, London, N1 7JQ
 Telephone 020 7566 7440
 www.dugganmorrisarchitects.com

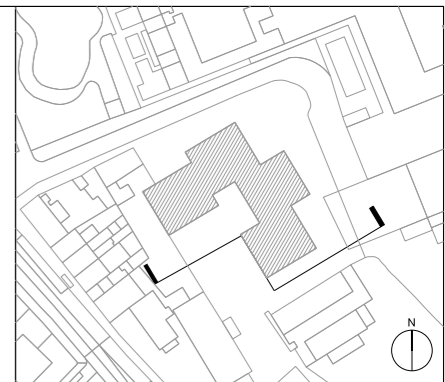
- Do not scale from this drawing
 - All dimensions to be checked on site by the Contractor
 - And such dimensions to be their responsibility
 - Report all drawing errors and omissions to the Architect
 - All dimensions in millimeters unless noted otherwise
 - If in doubt ask Contract Administrator

job title
 BARTRAM'S HAMPS ROAD
 drawing title/location
 ELEVATION EAST
 status
 PLANNING

scale	1:100 @ A1	1:200 @ A3			
job no	source	zone	element	drawing no.	revision
A213	A		(01)	2 02	B



3. South Elevation



PLANNING CONDITION 04
 FACADE FITTINGS KEY:
 FF-1 Perforated metal grille (for further information see EX-2.4 of Planning Condition 02 document)
 FF-2 Wall mounted flush brick slot light
 FF-3 Wall mounted door access controls
 FF-4 Wall mounted car park access controls
 FF-5 Roof mounted ventilation flue

- Edge parapet +10275
- Eighth FFL +101660
- Seventh FFL +98435
- Sixth FFL (block C) +95210
- Fifth FFL (block A) +91985
- Fourth FFL +88760
- Third FFL (block D) +85535
- Second FFL +82310
- First FFL +79085
- Ground FFL +73350
- Basement 1 FFL +71800
- Swimming pool tank +70600
- Maintenance tank +70200
- Typical Basement 2 FFL +68250
- Car Park FFL +67850

SKETCH 24.08.17 For discharge of Planning Condition 04 - locations of external access controls, lighting, and ventilation grilles shown

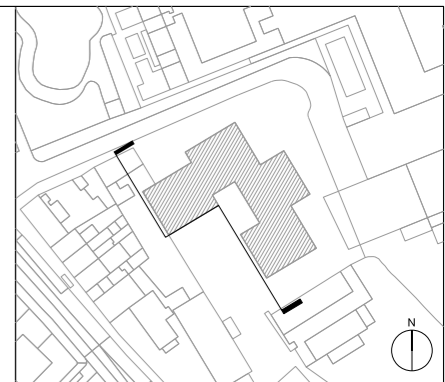
revision	date	description
B	10.05.14	Minor amendments to window positions
A	10.04.15	Flue locations updated
/	01.10.14	Revised to massing of Block A and B
		Revised parapet levels bubbled
		Submitted for planning

DUGGAN MORRIS ARCHITECTS
 Duggan Morris Architects Ltd
 Unit 7, 16-24 Underwood street, London, N1 7JQ
 Telephone 020 7566 7440
 www.dugganmorrisharchitects.com

- Do not scale from this drawing
 - All dimensions to be checked on site by the Contractor
 - And such dimensions to be their responsibility
 - Report all drawing errors and omissions to the Architect
 - All dimensions in millimeters unless noted otherwise
 - If in doubt ask Contract Administrator

job title	BARTRAM'S HAMPS HED				
drawing title/location	ELEVATION SOUTH				
status	PLANNING				
scale	1:100 @ A1		1:200 @ A3		
job no	source	zone	element	drawing no.	revision
A213	A		(01)	2 03	B

4. West Elevation



PLANNING CONDITION 04
 FACADE FITTINGS KEY:
 FF-1 Perforated metal grille (for further information see EX-2.4 of Planning Condition 02 document)
 FF-2 Wall mounted flush brick slot light
 FF-3 Wall mounted door access controls
 FF-4 Wall mounted car park access controls
 FF-5 Roof mounted ventilation flue



SKETCH	24.08.17	For discharge of Planning Condition 04 location of external access controls, lighting, and ventilation grilles shown
B	10.05.17	Minor amendments to window positions
A	10.04.16	Flue locations updated Revision to massing of Block A and B
/	01.10.14	Revised parapet levels bubbled Submitted for planning
revision	date	

DUGGAN MORRIS ARCHITECTS
 Duggan Morris Architects Ltd
 Unit 7, 16-24 Underwood street, London, N1 7JQ
 Telephone 020 7566 7440
 www.dugganmorrisarchitects.com

- Do not scale from this drawing
 - All dimensions to be checked on site by the Contractor
 - And such dimensions to be their responsibility
 - Report all drawing errors and omissions to the Architect
 - All dimensions in millimeters unless noted otherwise
 - If in doubt ask Contract Administrator

job title
 BARTRAM'S HAMPS ROAD
 drawing title/location
 ELEVATION WEST
 status
 PLANNING
 scale
 1:100 @ A1 1:200 @ A3

job no	source	zone	element	drawing no.	revision
A213		A	(01)	2 04	B