

This drawing is to be read in conjunction with the approved drawings and information contained in Planning and Listed Building Application references 2017/0076/L and 2016/6070/P.



51

8 Little Green Street,  
London NW5 1BL  
Jake & Stella Solomon  
Project No. 1143

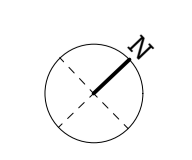
51% Studios  
1A Cobham Mews, Agar Grove, London NW1 9SB  
+ 44 (0) 203 355 1205

For planning  
RIBA Stage 3  
Proposed site plan

Scale 1:100 @ A1 / 1:200 @ A3  
Drawn by PT/TJS, Aug 2017

Issue Notes:  
A 23/08/17 Issued for planning and listed building consent

Property boundary



This drawing is to be read in conjunction with the approved drawings and information contained in Planning and Listed Building Application references 2017/0076/L and 2016/6070/P.



1 Proposed Little Green Street elevation (north side)  
1:100



2 Proposed Little Green Street rear elevations (northside)  
1:100

51

8 Little Green Street,  
London NW5 1BL

Jake & Stella Solomon  
Project No. 1143

51% Studios  
1A Cobham Mews, Agar Grove, London NW1 9SB  
+44 (0) 203 355 1205

For planning  
RIBA Stage 3  
Proposed street  
elevations

Scale 1:100 @ A1 / 1:200 @ A3  
Drawn by PT/TS, Aud 2017

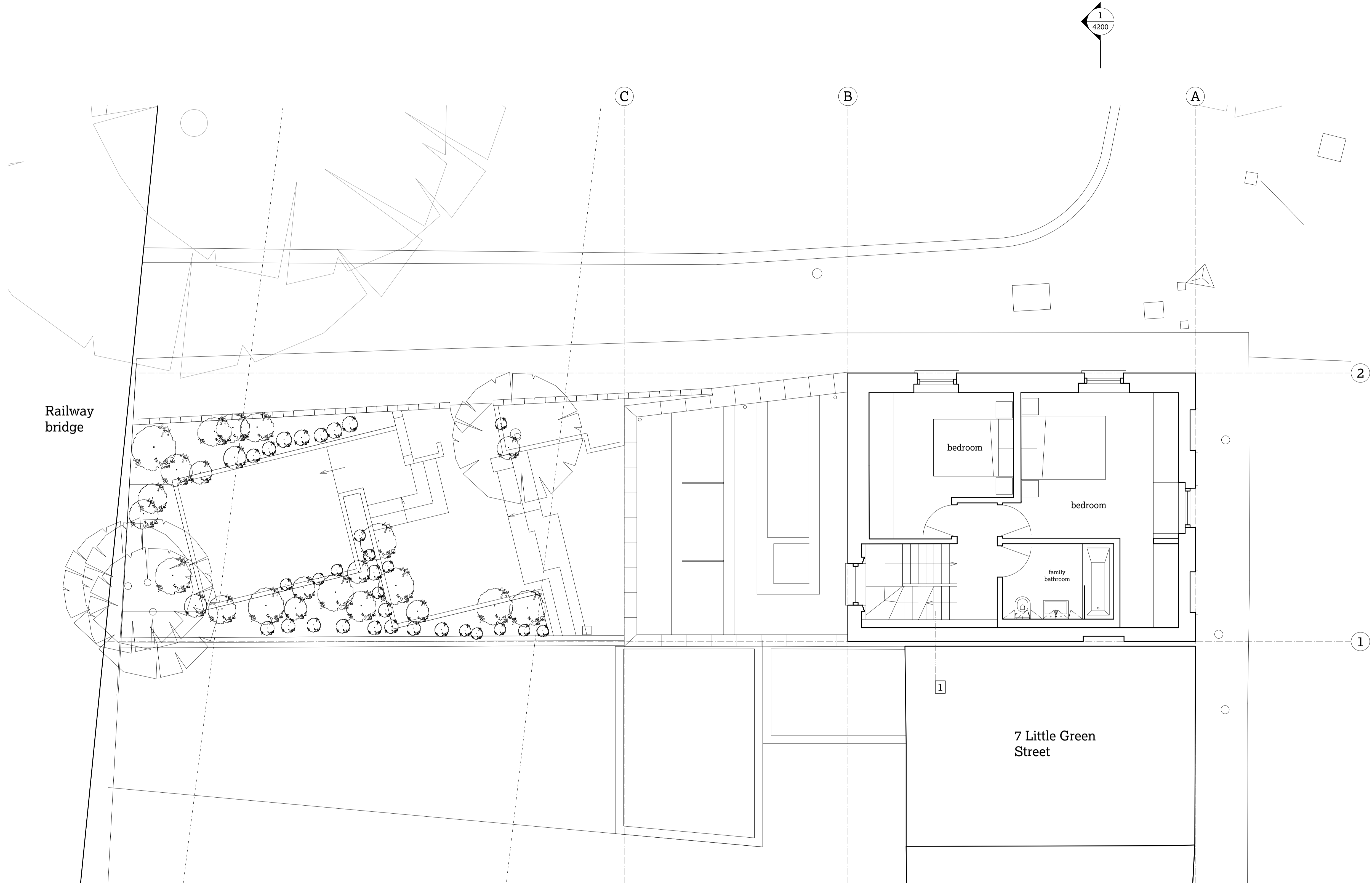
Issue Notes:  
A 23/08/17 Issued for planning and listed building consent



4002

A

This drawing is to be read in conjunction with the approved drawings and information contained in Planning and Listed Building Application references 2017/0076/L and 2016/6070/P.



51

8 Little Green Street,  
London NW5 1BL

Jake & Stella Solomon  
Project No. 1143

51% Studios  
1A Cobham Mews, Agar Grove, London NW1 9SB  
+ 44 (0) 203 355 1205

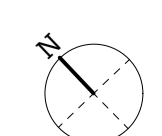
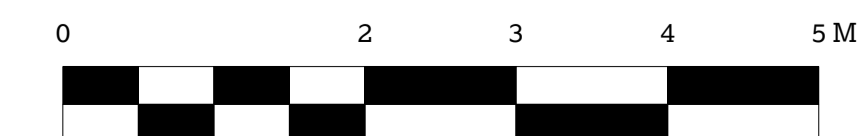
For planning  
RIBA Stage 3  
Proposed second floor  
plan

Scale 1:50 @ A1 / 1:100 @ A3  
Drawn by PT/TS, Aug 2017

Issue Notes:  
A 23/08/17 Issued for planning and listed  
building consent

1 Proposed second floor plan  
1:50

1 New staircase continue above existing to  
access new roof space.



4005

A

This drawing is to be read in conjunction with the approved drawings and information contained in Planning and Listed Building Application references 2017/0076/L and 2016/6070/P.

51

8 Little Green Street,  
London NW5 1BL

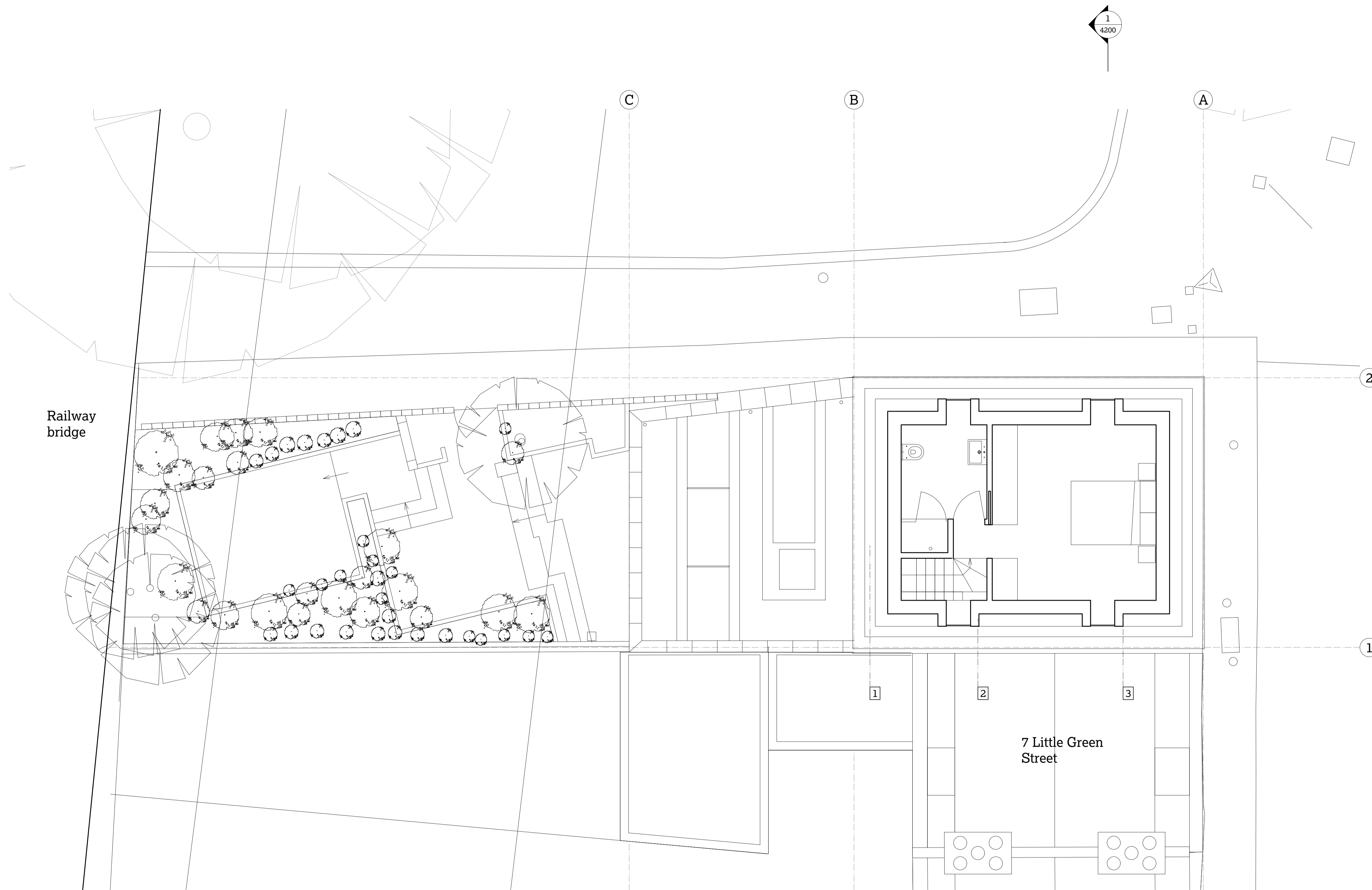
Jake & Stella Solomon  
Project No. 1143

51% Studios  
1A Cobham Mews, Agar Grove, London NW1 9SB  
+ 44 (0) 203 355 1205

For planning  
RIBA Stage 3  
Proposed roof space plan

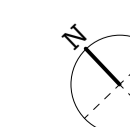
Scale 1:50 @ A1 / 1:100 @ A3  
Drawn by PT/TS, Aug 2017

Issue Notes:  
A 23/08/17 Issued for planning and listed building consent



- 1 Generous gutter between mansard and parapet for maintenance.
- 2 Traditional slate mansard roof with lead flashing details. Roof pitches in accordance with 'true mansard' typology in CPG1.
- 3 2 no. East and 2 no. West facing, zinc-clad dormers with double glazed casement windows for ventilation and roof maintenance access.

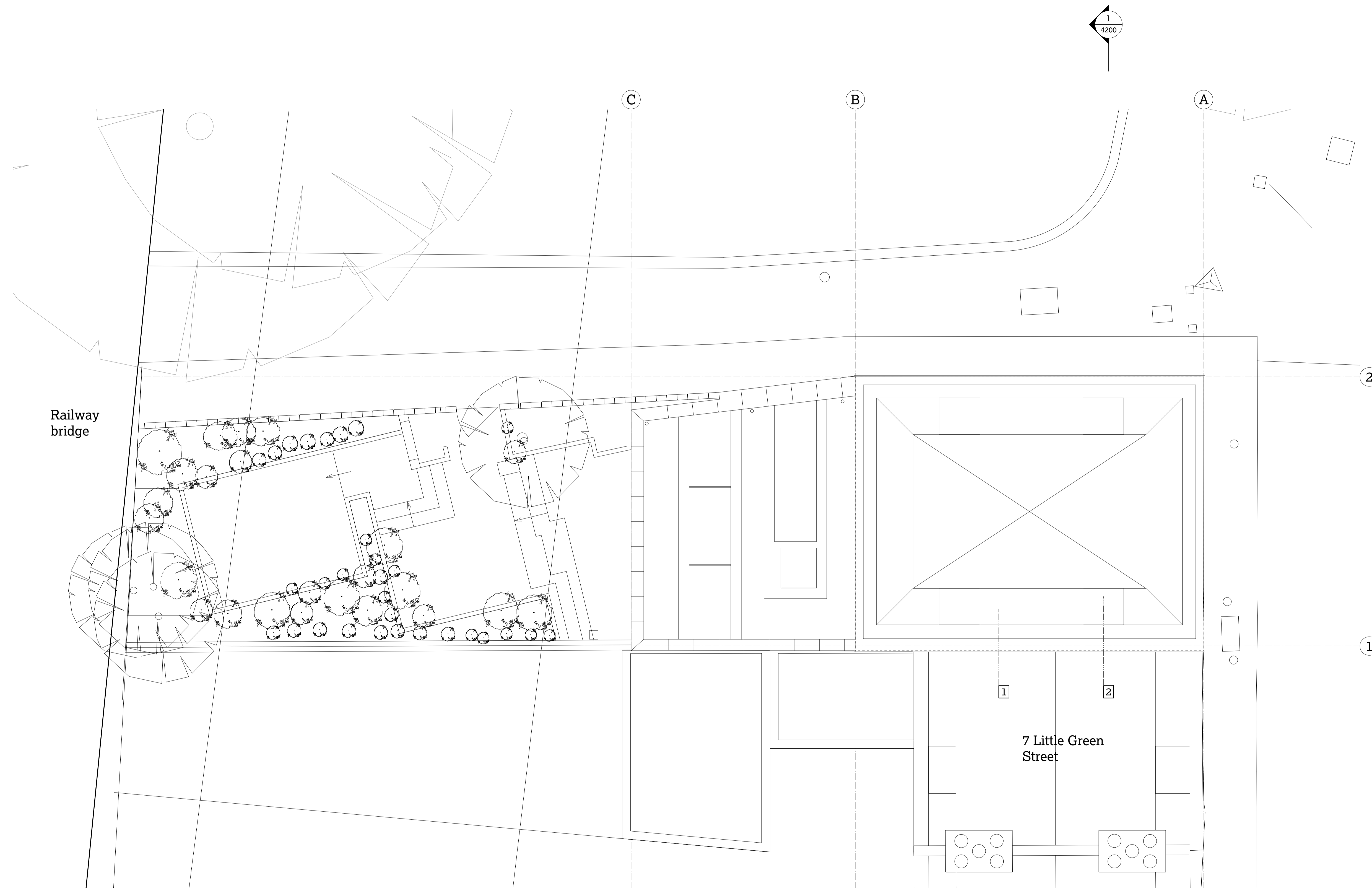
1 Proposed third floor plan  
1:50



4006

A

This drawing is to be read in conjunction with the approved drawings and information contained in Planning and Listed Building Application references 2017/0076/L and 2016/6070/P.



51

8 Little Green Street,  
London NW5 1BL

Jake & Stella Solomon  
Project No. 1143

51% Studios  
1A Cobham Mews, Agar Grove, London NW1 9SB  
+ 44 (0) 203 355 1205

For planning  
RIBA Stage 3

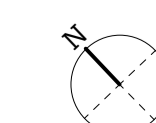
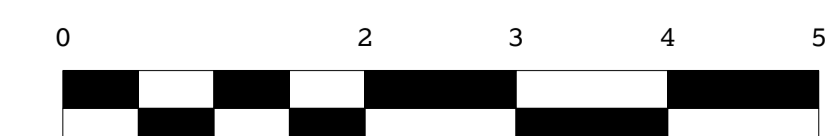
Proposed roof plan

Scale 1:50 @ A1 / 1:100 @ A3  
Drawn by PT/TS, Aug 2017

Issue Notes:  
A 23/08/17 Issued for planning and listed building consent

- 1 Traditional slate mansard roof with lead flashing details. Roof pitches in accordance with 'true mansard' typology in CPG1.
- 2 2 no. East and 2 no. West facing, zinc-clad dormers with double glazed casement windows for ventilation and roof maintenance access.

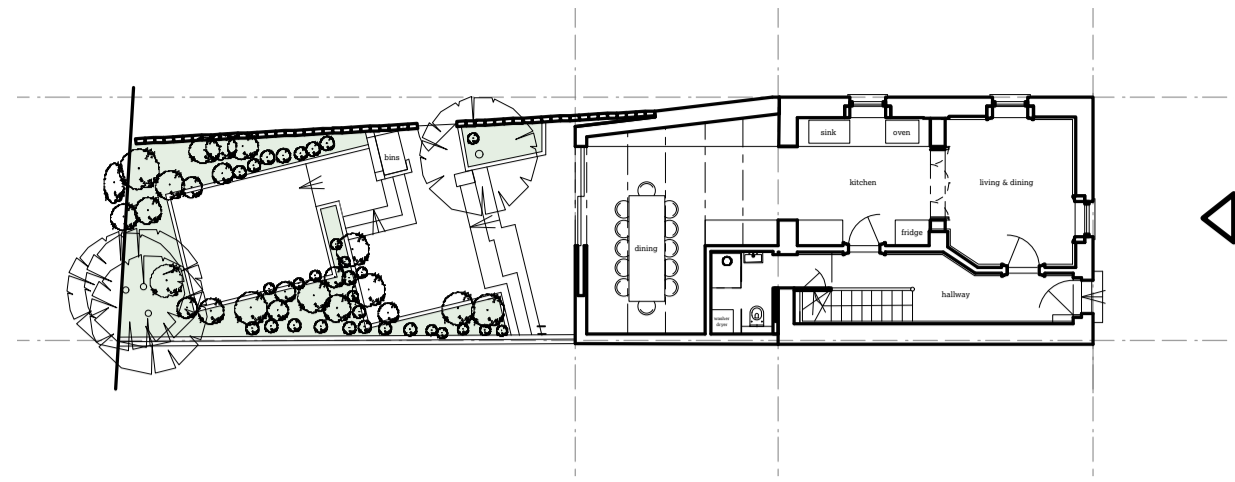
1 Proposed roof plan  
1:50



4007

A

This drawing is to be read in conjunction with the approved drawings and information contained in Planning and Listed Building Application references 2017/0076/L and 2016/6070/P.



51

8 Little Green Street,  
London NW5 1BL

Jake & Stella Solomon  
Project No. 1143

51% Studios  
1A Cobham Mews, Agar Grove, London NW1 9SB  
+ 44 (0) 203 355 1205

For planning  
RIBA Stage 3

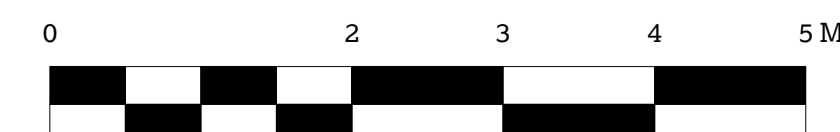
Proposed front elevation

Scale 1:50 @ A1 / 1:100 @ A3  
Drawn by PT/TS, Aug 2017

Issue Notes:  
A 23/08/17 Issued for planning and listed building consent

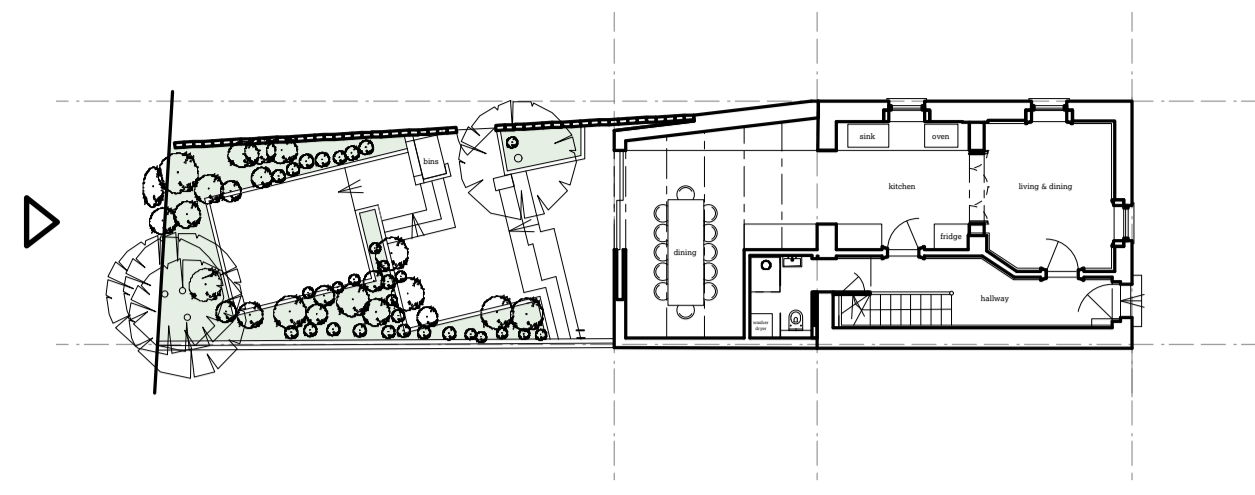
- 1 Traditional slate mansard roof with lead flashing details. Roof pitches in accordance with 'true mansard' typology in CPG1.
- 2 2 no. East and 2 no. West facing, zinc-clad dormers with double glazed casement windows for ventilation and roof maintenance access.

1 Proposed front elevation  
1:50



4100 A

This drawing is to be read in conjunction with the approved drawings and information contained in Planning and Listed Building Application references 2017/0076/L and 2016/6070/P.



51

8 Little Green Street,  
London NW5 1BL  
Jake & Stella Solomon  
Project No. 1143

51% Studios  
1A Cobham Mews, Agar Grove, London NW1 9SB  
+ 44 (0) 203 355 1205

For planning  
RIBA Stage 3  
Proposed rear elevation

Scale 1:50 @ A1 / 1:100 @ A3  
Drawn by PT/TS, Aug 2017

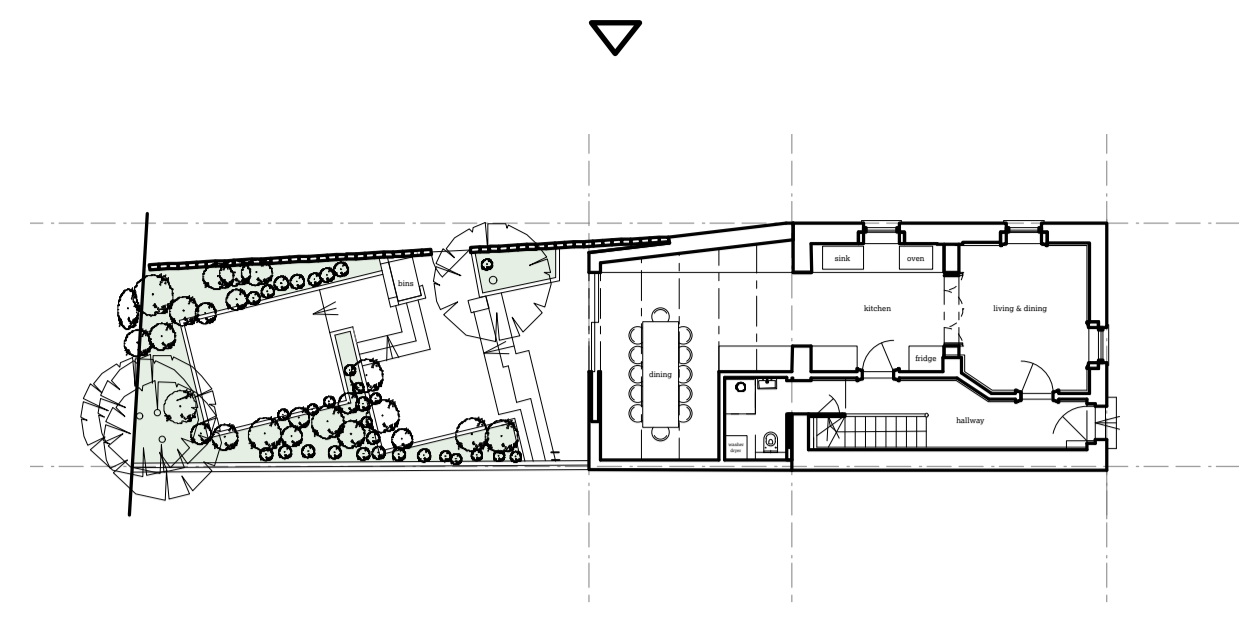
Issue Notes:  
A 23/08/17 Issued for planning and listed building consent

- 1 Traditional slate mansard roof with lead flashing details. Roof pitches in accordance with 'true mansard' typology in CPG1.
- 2 2 no. East and 2 no. West facing, zinc-clad dormers with double glazed casement windows for ventilation and roof maintenance access.

1 Proposed rear elevation  
1:50



This drawing is to be read in conjunction with the approved drawings and information contained in Planning and Listed Building Application references 2017/0076/L and 2016/6070/P.



1  
4200

1  
4200



51

8 Little Green Street,  
London NW5 1BL

Jake & Stella Solomon  
Project No. 1143

51% Studios  
1A Cobham Mews, Agar Grove, London NW1 9SB  
+44 (0) 203 355 1205

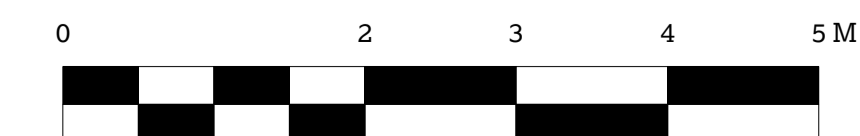
For planning  
RIBA Stage 3  
Proposed east  
elevation

Scale 1:50 @ A1 / 1:100 @ A3  
Drawn by PT/TS, Aug 2017

Issue Notes:  
A 23/08/17 Issued for planning and listed building consent

- 1 Traditional slate mansard roof with lead flashing details. Roof pitches in accordance with 'true mansard' typology in CPG1.
- 2 2 no. East and 2 no. West facing, zinc-clad dormers with double glazed casement windows for ventilation and roof maintenance access.

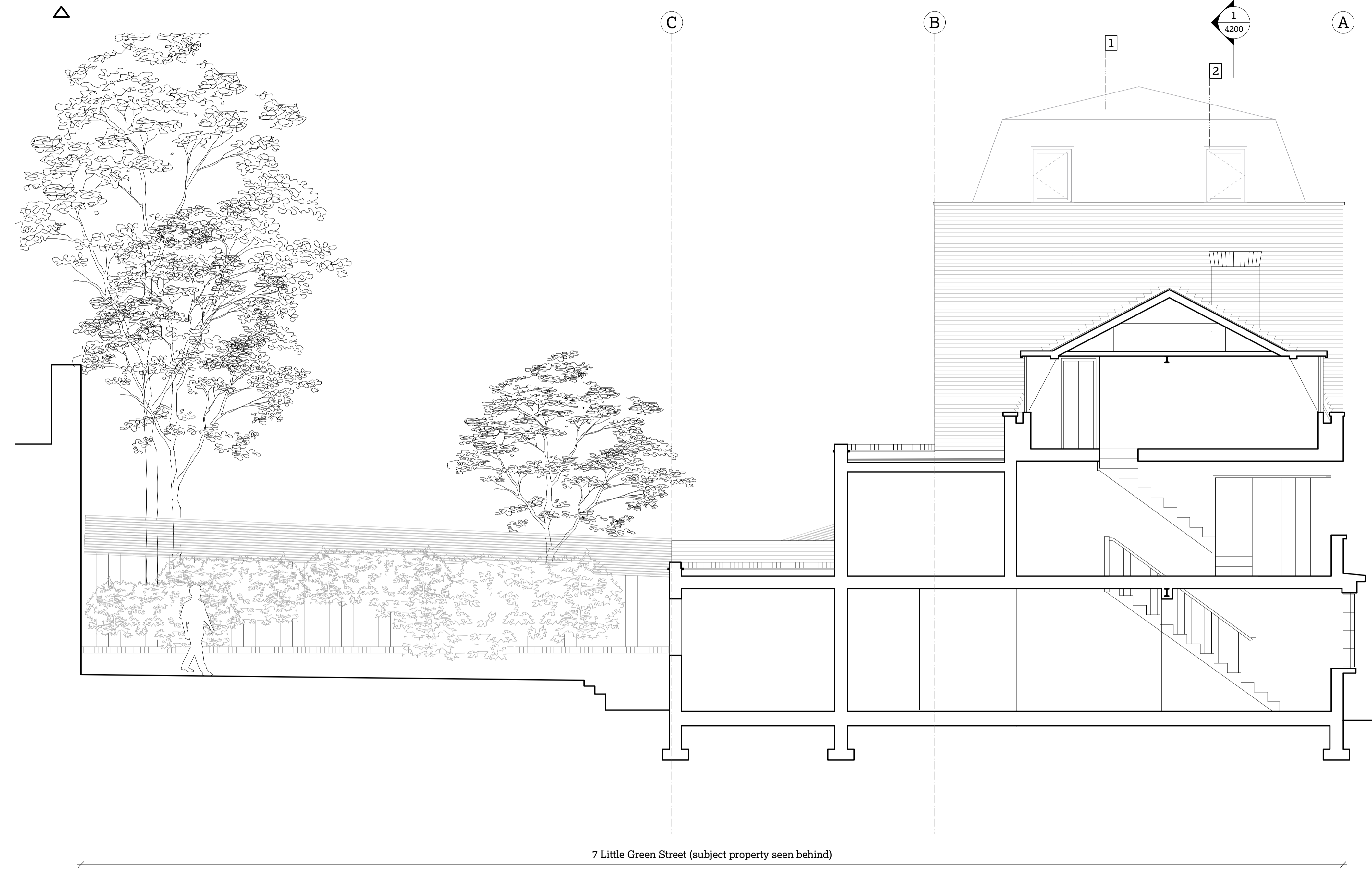
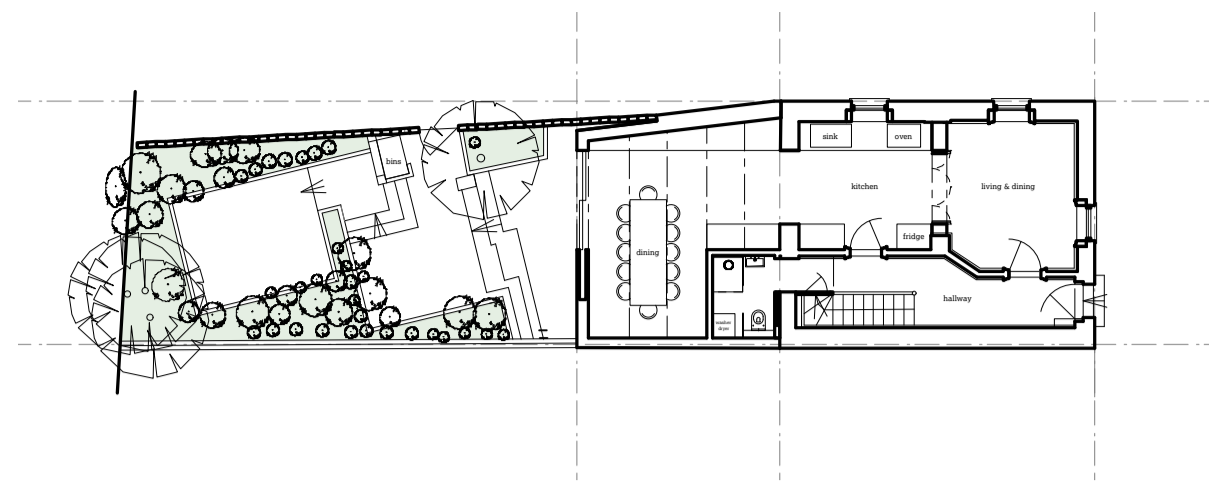
1 Proposed east elevation  
1:50



4102 A



This drawing is to be read in conjunction with the approved drawings and information contained in Planning and Listed Building Application references 2017/0076/L and 2016/6070/P.



7 Little Green Street (subject property seen behind)

51

8 Little Green Street,  
London NW5 1BL

Jake & Stella Solomon  
Project No. 1143

51% Studios  
1A Cobham Mews, Agar Grove, London NW1 9SB  
+ 44 (0) 203 355 1205

For planning  
RIBA Stage 3  
Proposed west  
elevation

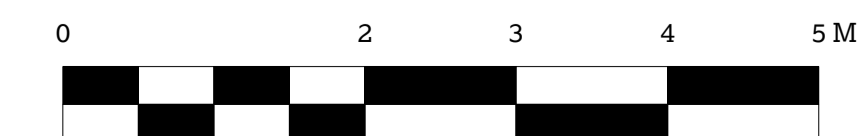
Scale 1:50 @ A1 / 1:100 @ A3  
Drawn by PT/TS, Aug 2017

Issue Notes:  
A 23/08/17 Issued for planning and listed building consent

1 Traditional slate mansard roof with lead flashing details. Roof pitches in accordance with 'true mansard' typology in CPG1.

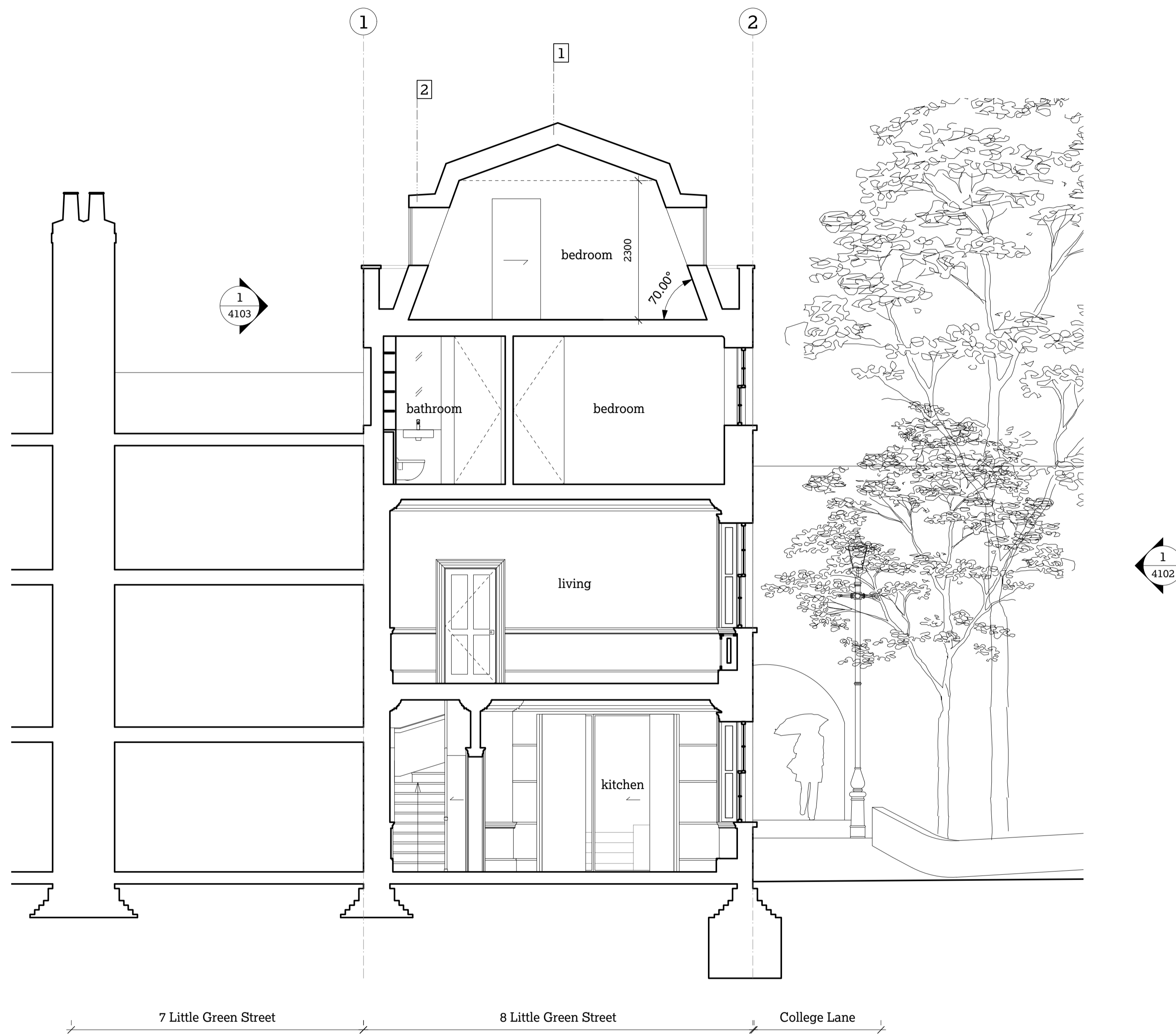
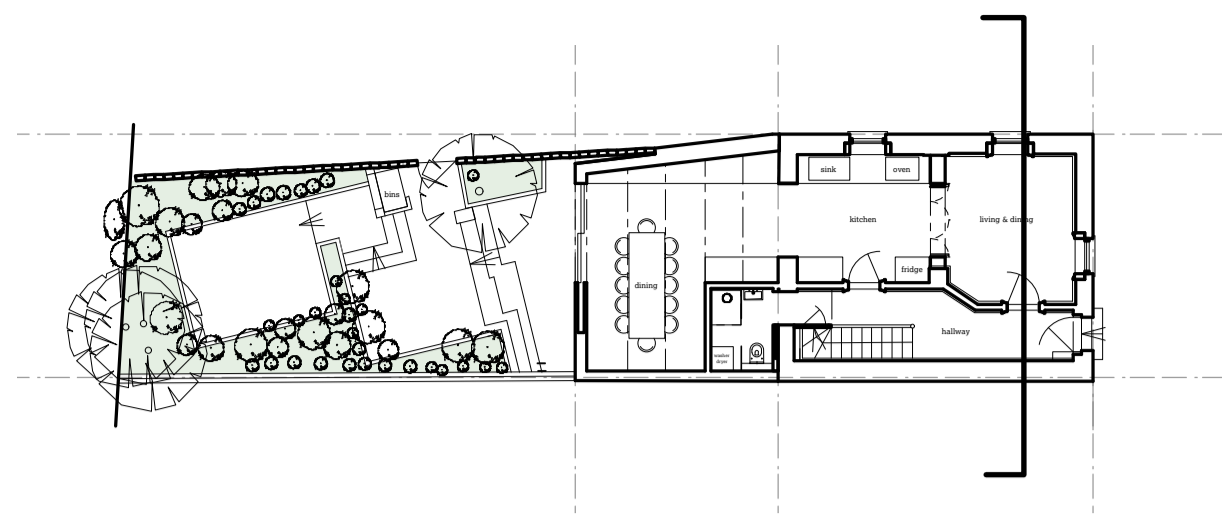
2 2 no. East and 2 no. West facing, zinc-clad dormers with double glazed casement windows for ventilation and roof maintenance access.

1 Proposed west elevation  
1:50



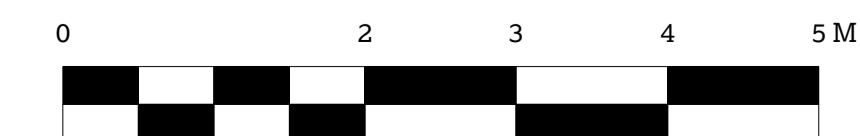
4103

A



- 1 Traditional slate mansard roof with lead flashing details. Roof pitches in accordance with 'true mansard' typology in CPG1.
- 2 2 no. East and 2 no. West facing, zinc-clad dormers with double glazed casement windows for ventilation and roof maintenance access.

1 Proposed section 1  
1:50



4200 A

© 51% Studios Ltd. Reproduction in whole or in part is forbidden without written permission of 51% Studios Limited.  
 All dimensions are to be checked on site before any work proceeds. Do not scale this drawing but use only figured dimensions. Any errors or omissions are to be reported to 51%.  
 The Contractor shall submit full size drawings and specifications to 51% for approval, without which, manufacture shall not commence.  
 This drawing is to be read in conjunction with all the relevant consultants' and/or specialists' drawings/documents, and any discrepancies or variations are to be notified to 51% before work commences.  
 For further information please see other drawings and documents enclosed with this drawing. For information on Structure use Engineer's drawings. For further information on Services use Engineer's and/or Contractor's drawings.

This drawing is to be read in conjunction with the approved drawings and information contained in Planning and Listed Building Application references 2017/0076/L and 2016/6070/P.

51

8 Little Green Street,  
London NW5 1BL  
 Jake & Stella Solomon  
 Project No. 1143

51% Studios  
 1A Cobham Mews, Agar Grove, London NW1 9SB  
 + 44 (0) 203 355 1205

For planning  
 RIBA Stage 3  
 Proposed section 1

Scale 1:50 @ A1 / 1:100 @ A3  
 Drawn by PT/TS, Aug 2017

Issue Notes:  
 A 23/08/17 Issued for planning and listed building consent