

FIG 1.1

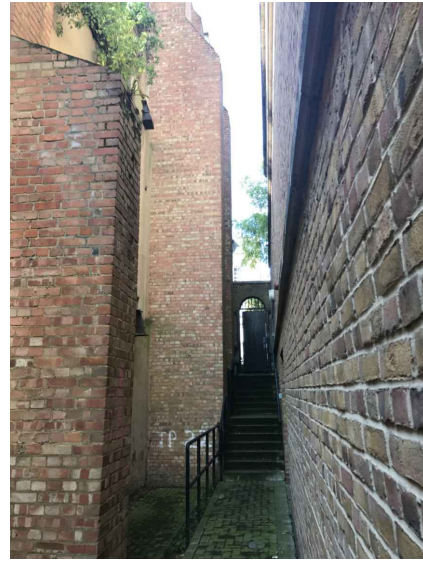


FIG 1.2

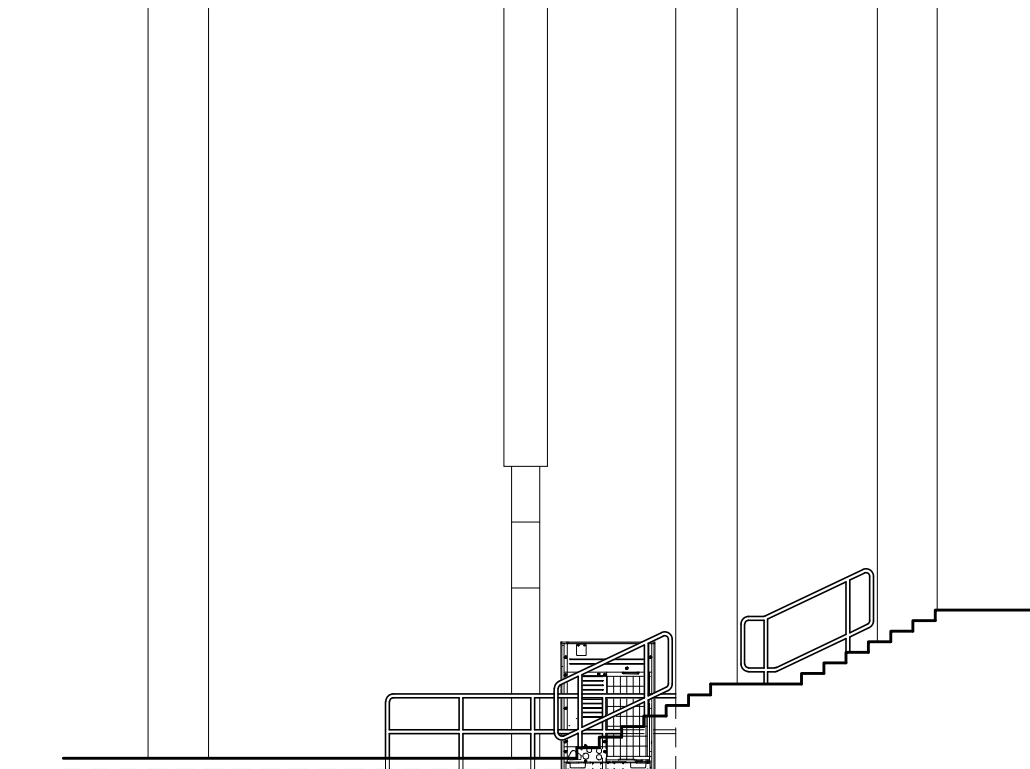


FIG 1.3

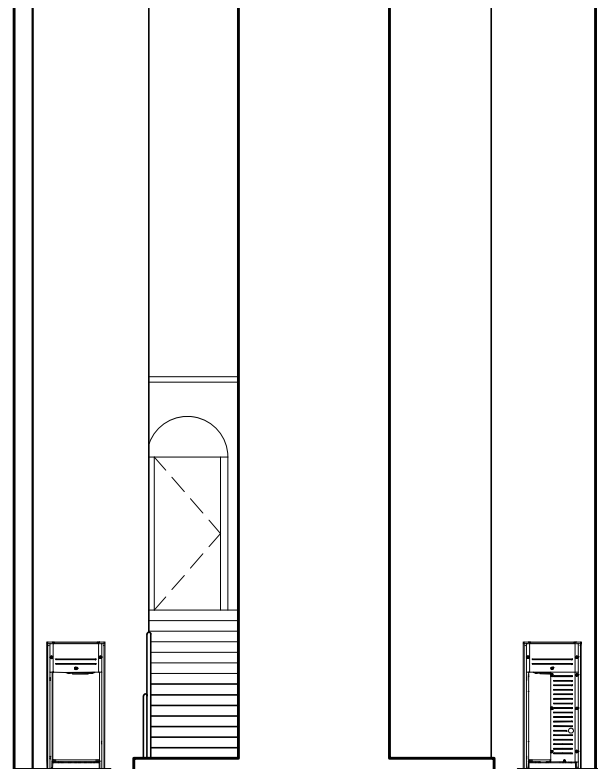
This drawing is copyright and must not be reissued, loaned or copied without the written consent of this practice. All dimensions must be checked on site before proceeding and any discrepancies notified immediately.

All drawings to be read in conjunction with consultant structural engineers, mechanical and electrical consultants, acoustic engineers, energy consultants, etc. design calculation sheets, specifications and drawings plus any accompanying product literature, accredited details, etc.

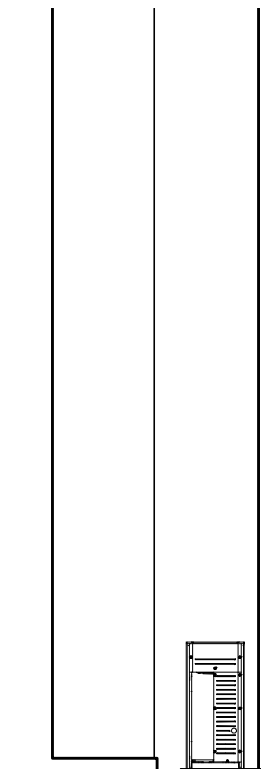
© Copyright Livemore



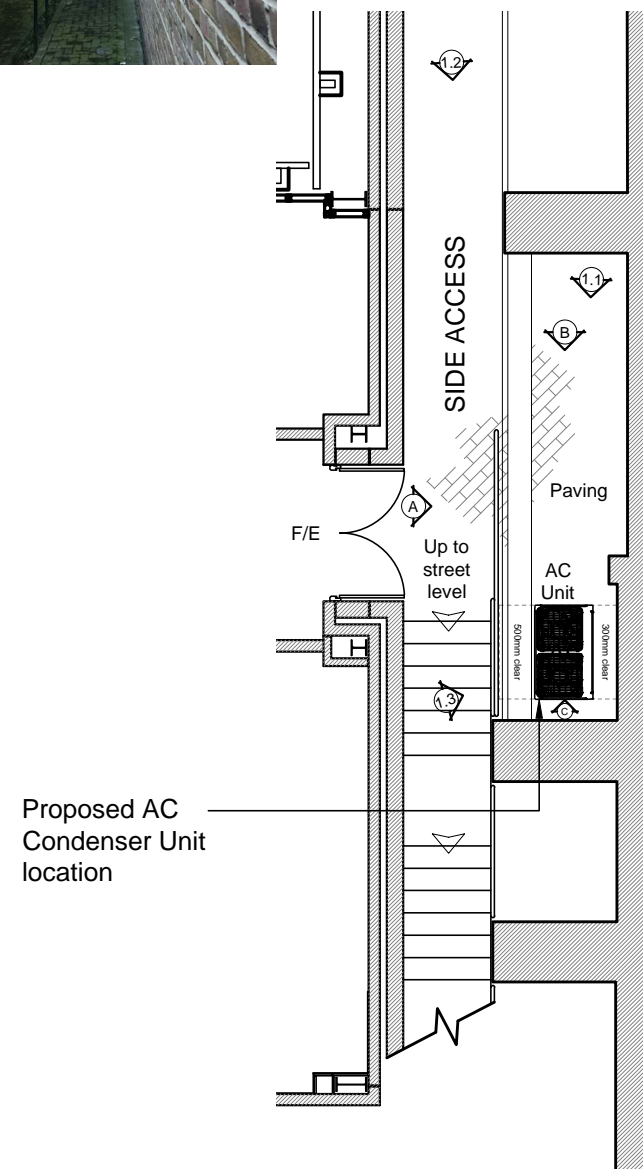
PROPOSED ELEVATION A
SCALE 1:100



PROPOSED ELEVATION B
SCALE 1:100



PROPOSED ELEVATION C
SCALE 1:100



Proposed AC
Condenser Unit
location

PROPOSED AC CONDENSER UNIT
LOCATION
SCALE 1:100

| | | |
|---|------------------|----------|
| B | Planning Issue | 25-08-17 |
| A | Location Changed | 21-08-17 |

| Rev. | Amendment | Date |
|------|-----------|------|
|------|-----------|------|



Client ROYAL MAIL PROPERTY & FACILITIES SOLUTIONS

Project ADMIN RE-FIT PLAN FOR
LONDON CENTRAL LD
24-58 ROYAL COLLEGE ST, CAMDEN, NW1 0QA

Title PROPOSED AC CONDENSER
UNIT LOCATION

Drawn by: TFS Date: 31-07-17

Checked by: AC

Scale @ A3: 1:100 Drg. No.: 15884-21

Leigh-on-Sea Office
74-76 Broadway
Leigh-on-Sea
Essex SS9 1AE

leigh.office@livemore.co.uk
01702 714977



London Office
14 Grays Inn Road
London
WC1X 8HN

london.office@livemore.co.uk

www.livemore.co.uk