

4.4 Scale

The scale of the lettering has been designed in relation to the hierarchy of memorial engagement.

1. Primary message

The large lettering has a case height of 140mm. This ensures it is legible to the visitor on the garden pathway (furthest distance), and also a suitable scale to announce a presence to the passer-by on the public pavement.

2. Thirteen names of the innocent victims

The small lettering has a case height of 25mm and spacing of 115mm to ensure that it is legible to all visitors on the garden pathway. The garden provides a quiet place of contemplation and is therefore an appropriate location to engage with the names of the innocent victims. The names are not intended to be legible from the public pavement.

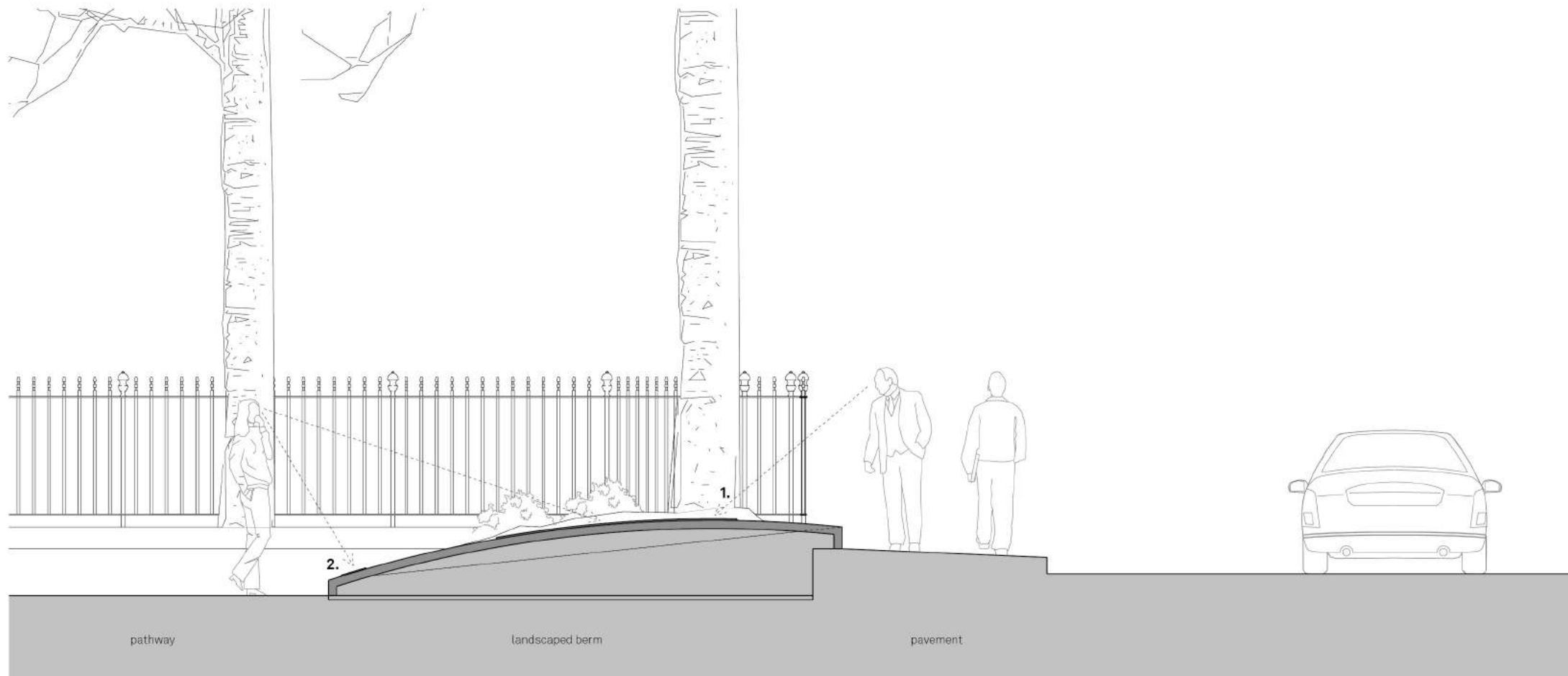


Figure 4.4e Relationship between public and primary and secondary information at a legible scale.



Figure 4.4f Case height of small lettering of the names of the thirteen innocent victims closes to pathway (not to scale)



Figure 4.4g Case height of the large lettering of the primary message (not to scale)

4.6 Proposed Section and Elevations

The cast iron plaque has a cambered surface curving in two directions to give it a sculptural quality.

It is proposed that a section of the existing boundary stone is removed to create an opening for the cast iron plaque to sit within. This allows the memorial to be seen from the street without obstructing the pavement or altering the existing railings.

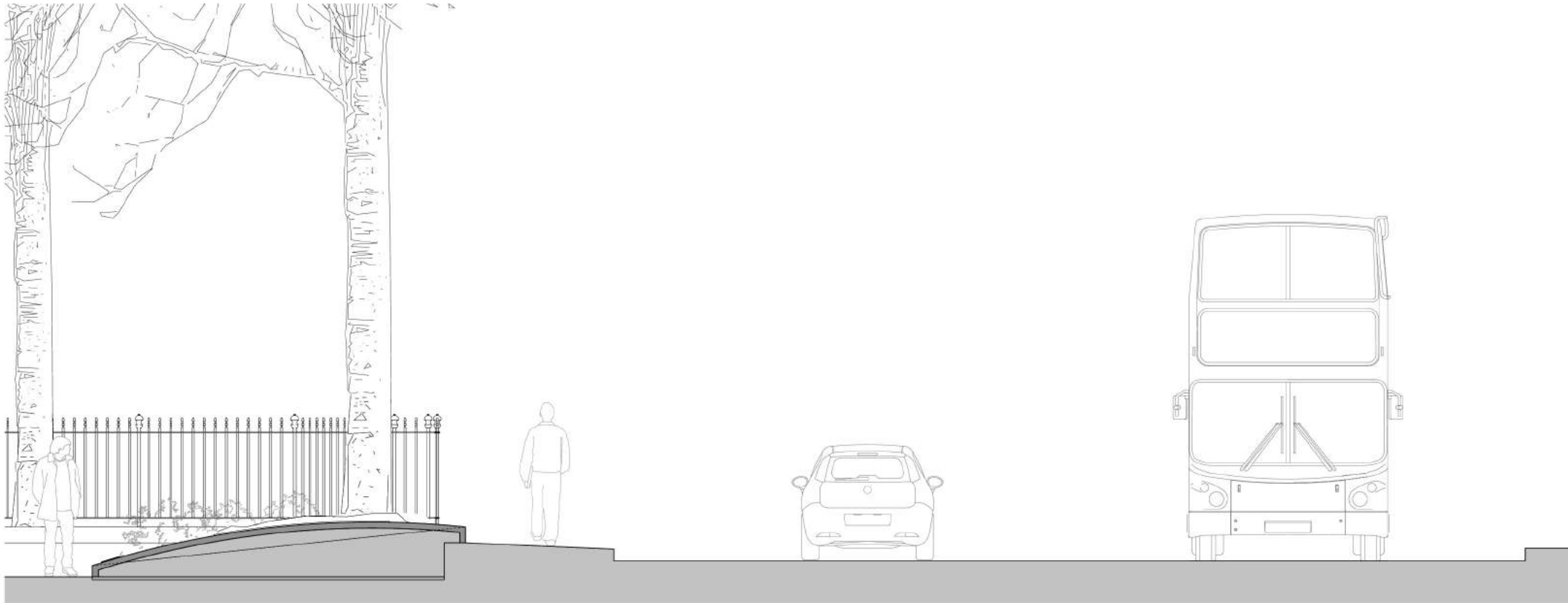


Figure 4.6a Proposed Section EE

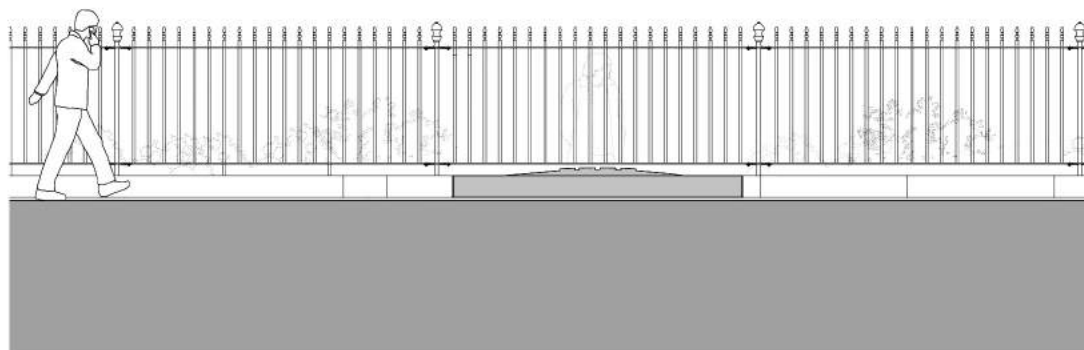


Figure 4.6b Proposed Section FF

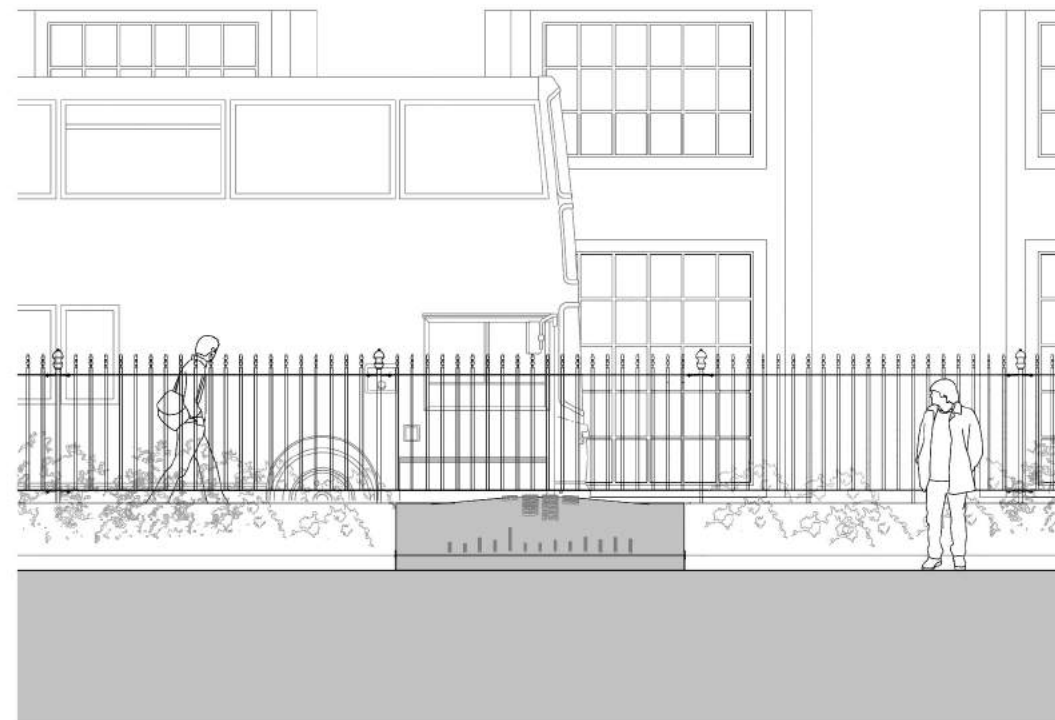
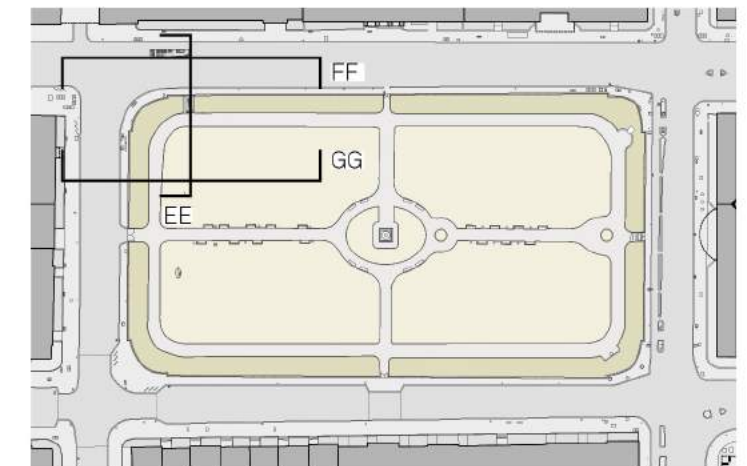


Figure 4.6c Proposed Section GG



4.7 Edge Condition



Figure 4.7a Existing view of edge condition in proposed location of memorial, July.



Figure 4.7c Proposed view of memorial and framed view, July. Facing edge of memorial aligned to planted border.



Figure 4.7b Existing view of edge condition in proposed location of memorial, February.

The adjacent photos demonstrate the changing visibility through the boundary of Tavistock Square in different seasons. The proposed memorial creates a break in the landscaped bank and the planting to frame a view of the location where the incident took place.

This framed view will be intensified in the summer months (including the anniversary of the event on the 7th July) by the fully grown planting on either side of the opening. The proposal encourages planting adjacent to the memorial to enhance the framed opening. The planting along the memorial edge will remain as existing or similar if any replacement should be required during installation.

The design of the memorial has been developed to require little maintenance as possible; a robust piece of urban fabric that is resilient to the city. The planted border will maintain its current maintenance schedule through Camden's parks team, while the memorial will be water jet washed annually prior to the anniversary.

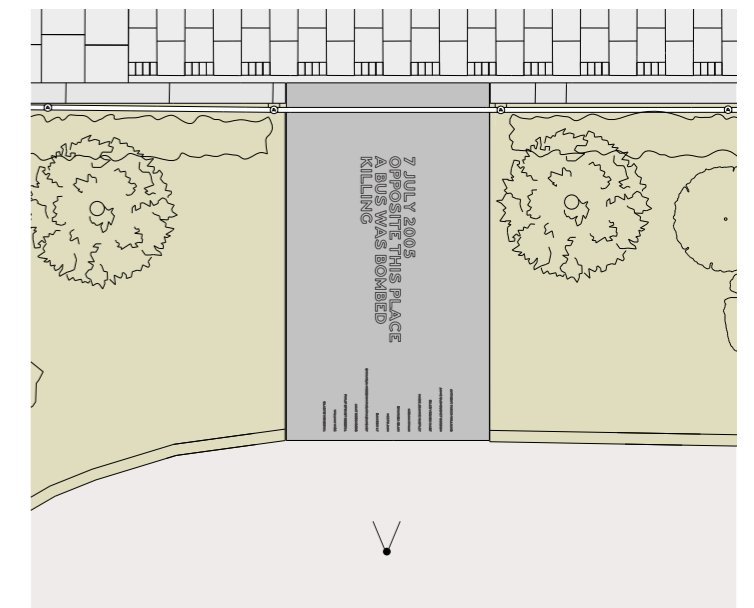


Figure 4.7d Proposed site plan