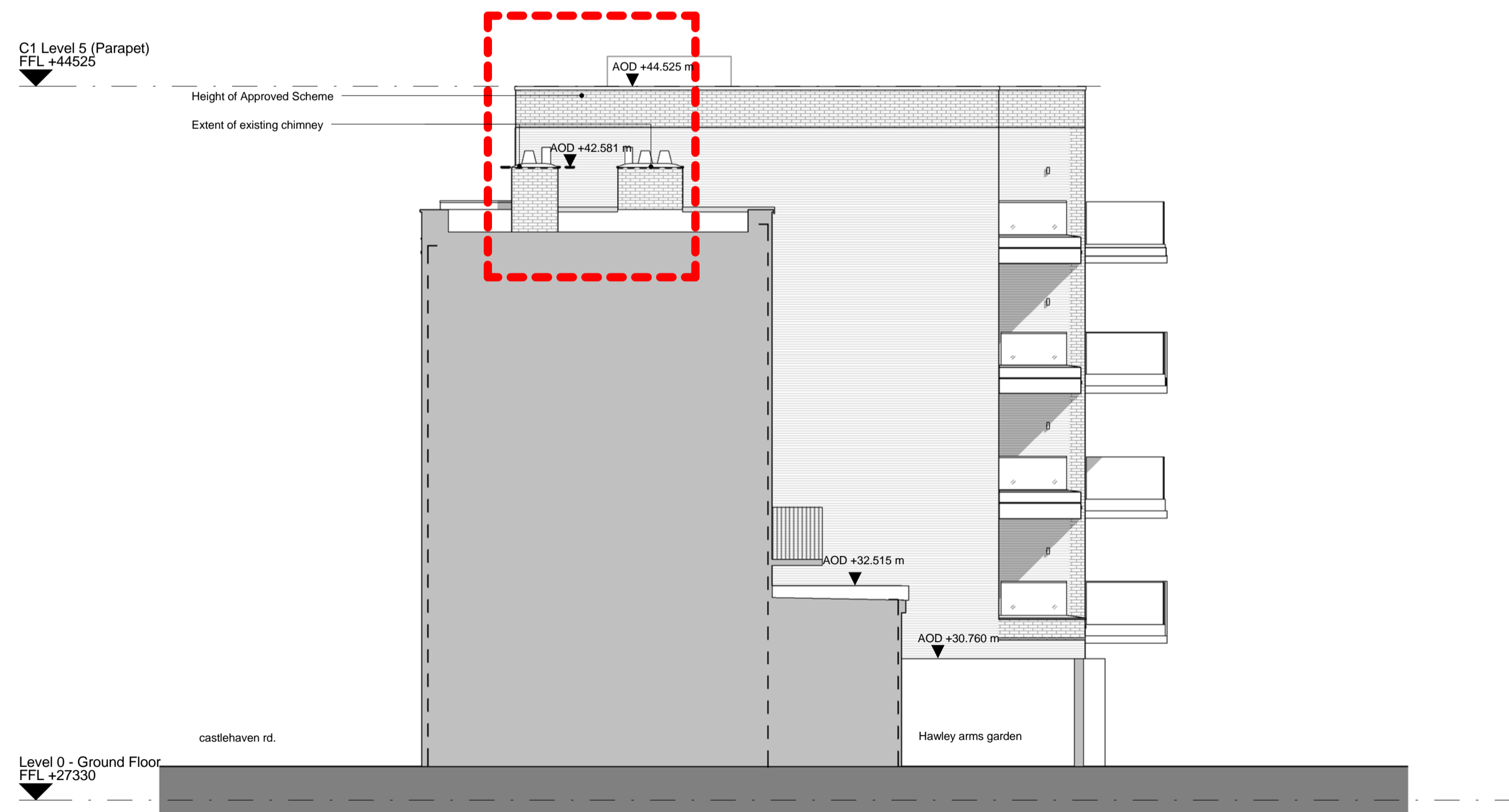
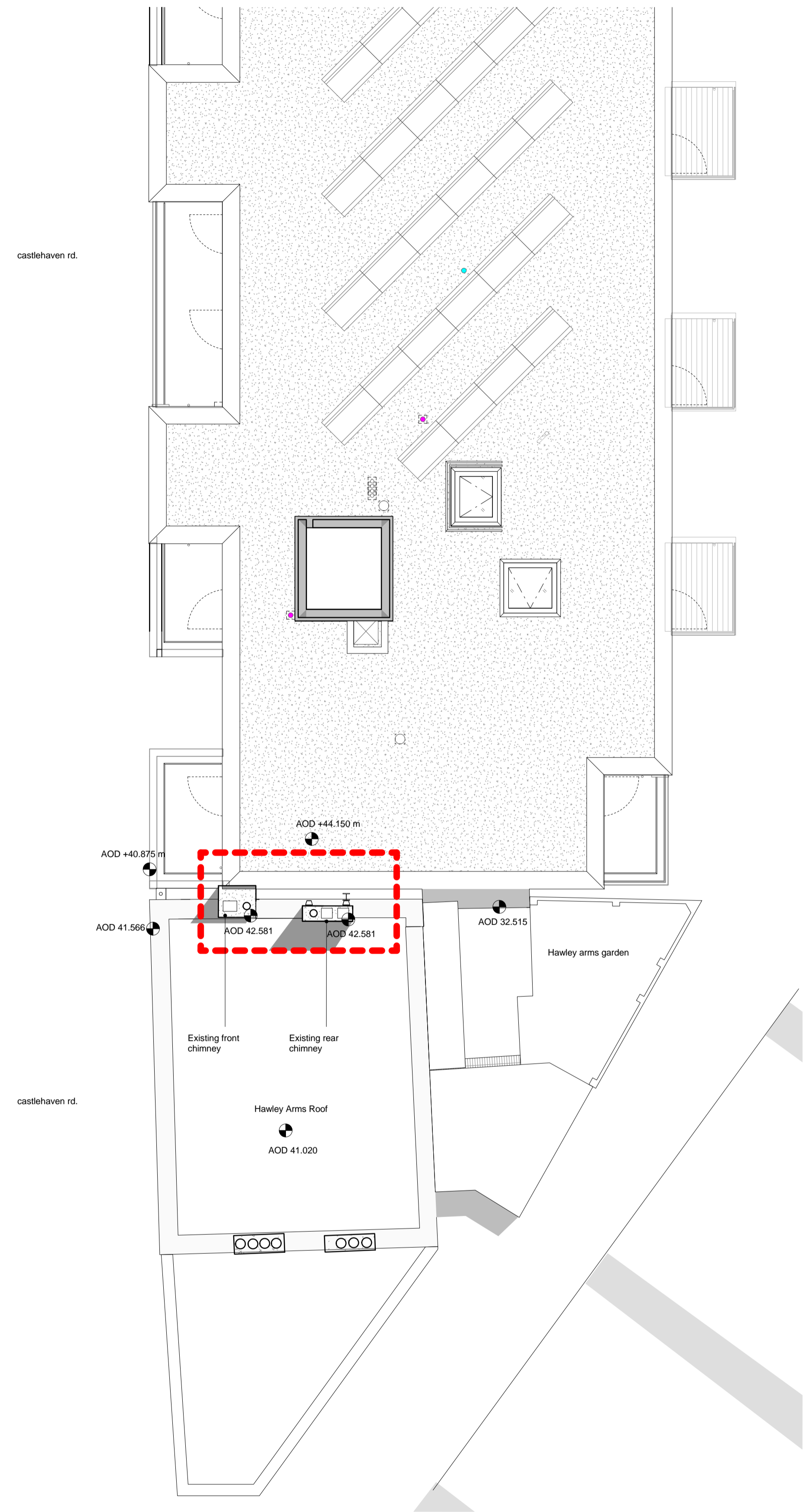


1 C1 NORTH-WEST ELEVATION - Hawley arms EXISTING



2 HAWLEY ARMS SECTION EXISTING



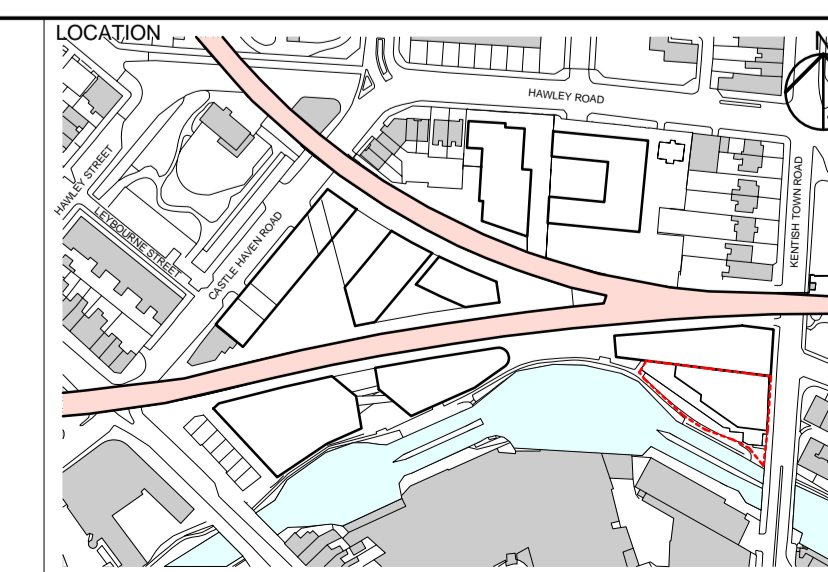
3 Hawley Arms roof Plan EXISTING

REV	DATE	DESCRIPTION	NOTE
P01	23/08/17	Planning Issue	

CONSULTANTS	
CLIENT:	Stanley Sidings
CONTRACTOR:	Mace
STRUCTURAL ENGINEER:	Walsh Group
MECHANICAL ENGINEER:	AECOM
COST CONSULTANT:	Gardiner & Theobald
PROJECT MANAGER:	Gardiner & Theobald
ACOUSTIC CONSULTANT:	Hoare Lea
TRANSPORT CONSULTANT:	Anup
PLANNING CONSULTANT:	Gerald Eve
LANDSCAPE ARCHITECT:	Fabrik
CDM CO-ORDINATOR:	MSA Safety
PRINCIPAL DESIGNER:	Gardiner & Theobald

NOTE

1. Do not scale from this drawing.
2. All dimensions to be checked on site by the contractor and such dimensions to be his responsibility.
3. Report all drawing errors, omissions and discrepancies to the architect.
4. This document may be issued in an uncontrolled CAD format to enable others to use it as background information to make alterations and/or additions. In that instance the file will be accompanied by a PDF version. It is for those making such alterations and additions to ensure that they make use of current background information. AHMM Ltd accepts no liability for any such alterations or additions to the background information or arising out of changes to background information which occur prior to alterations of additions being made.



ALFORD HALL MONAGHAN MORRIS ARCHITECTS Ltd 5-23 OLD STREET, LONDON, EC1V 9HL TEL 020 7251 5261 FAX 020 7251 5123 WEB WWW.AHMM.CO.UK			
job title CAMDEN LOCK VILLAGE drawing title / location Existing Hawley Arms Chimney			
drawn by NL	checked KH	scale 1 : 100 @ A1	status Planning
project 14045	zone CP_(00)_ 4000	drawing no. P01	revision