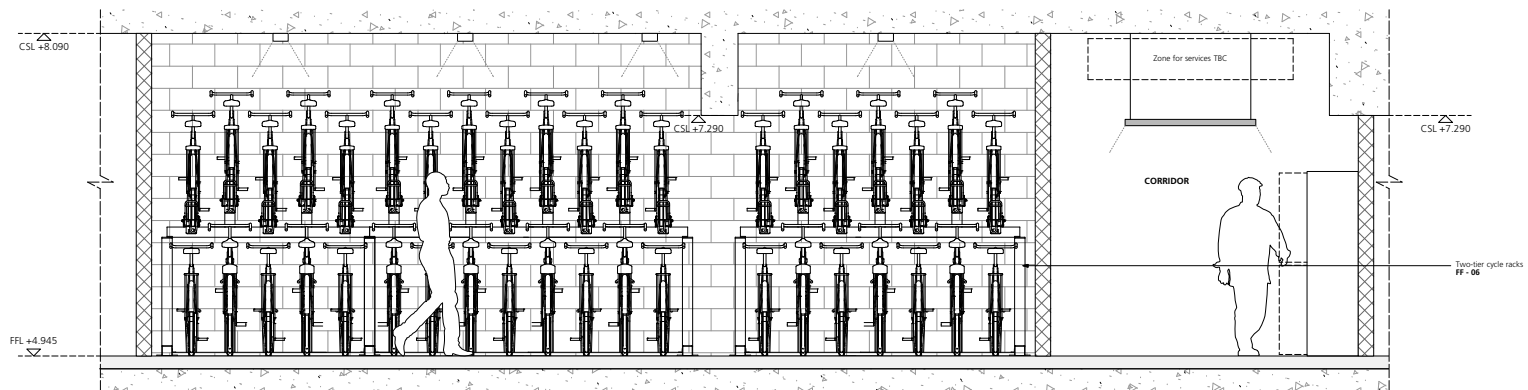
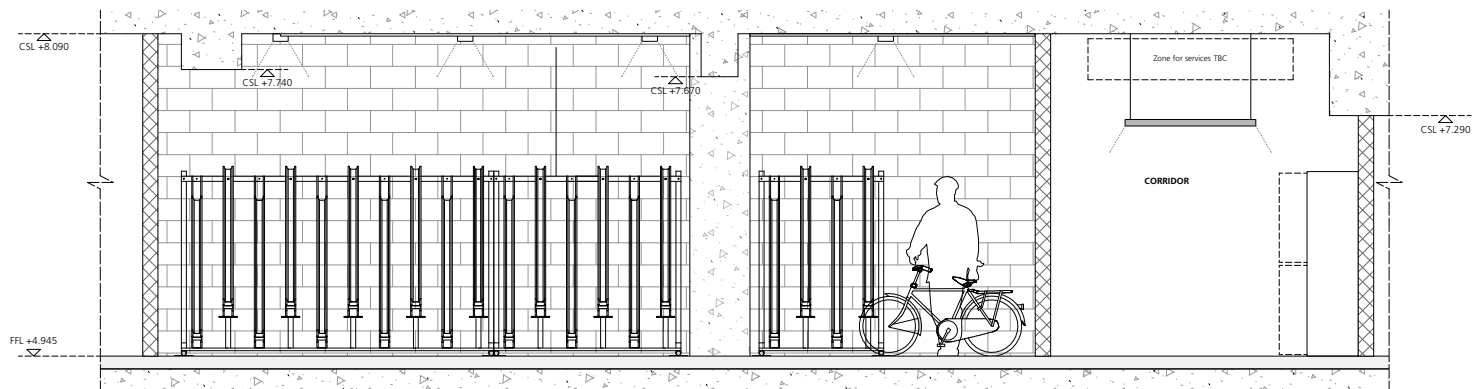


1 Proposed Elevation A
1:25 at A1



2 Proposed Elevation A
1:25 at A1



3 Proposed Elevation A
1:25 at A1

GENERAL NOTES.
 All dimensions to be checked on site prior to commencement of any works, and/or preparation of any shop drawings.
 Sizes of and dimensions to any structural elements are indicative only. See structural engineers drawings for actual sizes and dimensions.
 Sizes of and dimensions to any service elements are indicative only. See service engineers drawings for actual sizes and dimensions.
 This drawing to be read in conjunction with all other Architect's drawings, specifications and other Consultants' information.
 All proprietary systems shown on this drawing are to be recalled strictly in accordance with the Manufacturers/Suppliers recommended details.
 Any discrepancies between information shown on this drawing and any other contract information or manufacturers/suppliers recommendations is to be brought to the attention of the Architect
 DO NOT SCALE FROM THIS DRAWING.

- NOTES.**
- KEY**
- Architectural**
- Existing Wall/Partition/Column - Refer to PA Drawing Series.
 - New Partition - Refer to PA Drawing Series
 - New Blockwork Wall - Refer to PA Drawing Series
 - Plasterboard Suspended Ceiling - CF - 04 / CF - 05
- Lighting**
- L05 Ceiling Light Surface Mounted - Lobby
 - L07 Ceiling Light Linear - Cycle Store
 - L08 Ceiling Light Linear Emergency - Cycle Store
- Mechanical/Electrical/Plumbing**
- Combined Smokey/Smokey Detector
 - Optical Smokey Detector
 - PIR Detector
- NOTES**
- Lighting quantities and layouts to be confirmed by the Service Engineers Drawings and Specifications
 MEP Services are to be confirmed by the Service Engineers Drawings and Specifications
 For Fire Rating of all new Doors and Partitions, refer to BGY Fire Strategy Drawings (FS Series)

VE SCHEDULE

When reading specification for the various items, please note the following:

- Omit supergraphics to basement walls
- Lighting spec change subject to client approval of samples

C1 - Issued for Construction	03.05.17
T1 - Issued for Tender	02.06.15

REVISION	DATE
----------	------

Buckley Gray Yeoman
 Studio 4.04 The Tea Building 56 Shoreditch High Street
 London E1 6JL T: 020 7033 9913 F: 020 7033 9914

CLIENT Allied London

PROJECT Herbal House

DRAWING FIXTURES/FITTINGS/EQUIPMENT:
Cycle Stores 1 & 2: Elevations

SCALE 1:25 @ A1 (1:50 @ A3)

DATE April 2015 DRAWN BY CO

DWG No. 863 FF 03 REVISION C1

DRAWING STATUS **CONSTRUCTION**

Information contained on this drawing is the sole copyright of Buckley Gray Yeoman and is not to be reproduced without their permission.