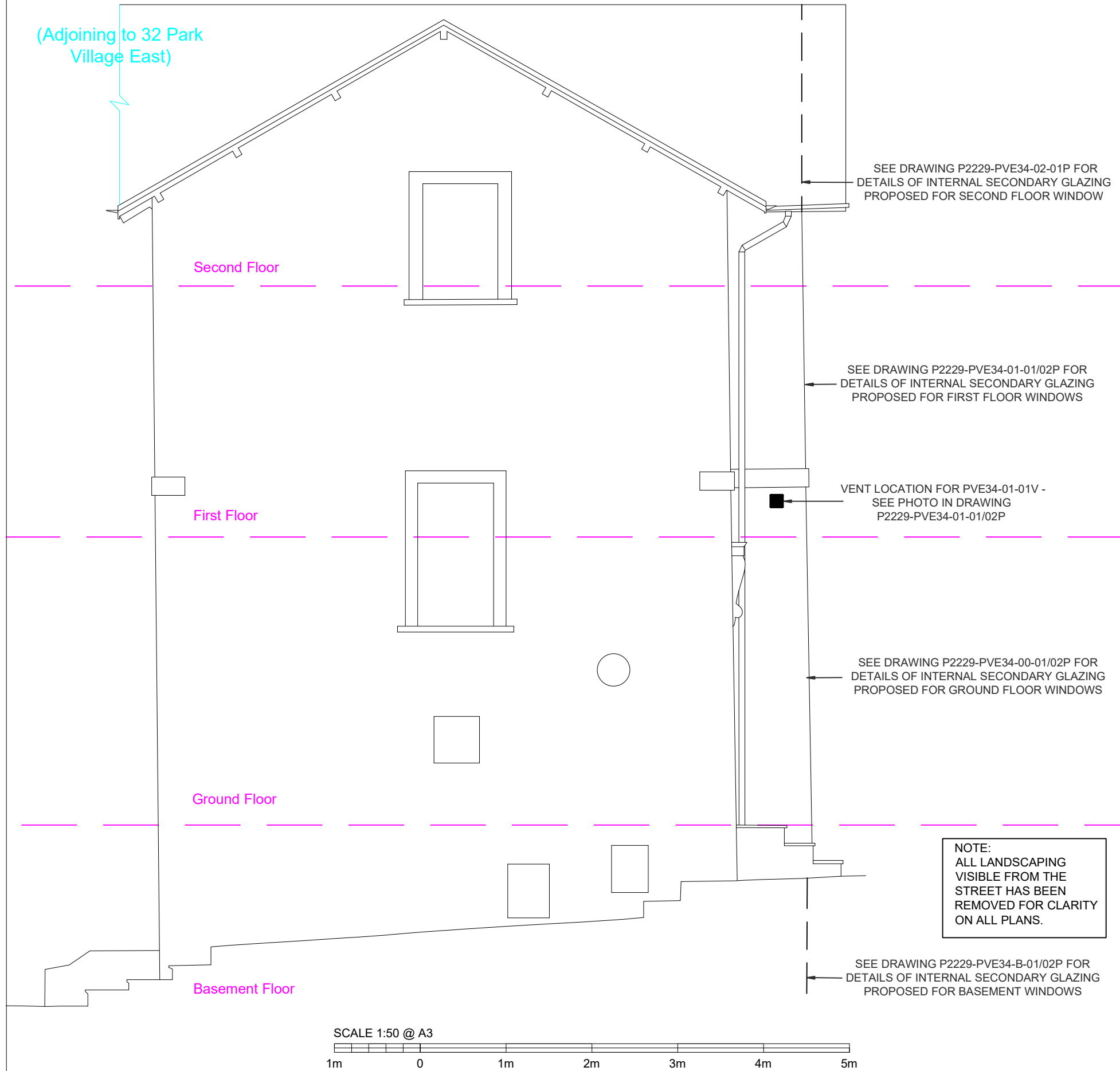


# PROPOSED SOUTH FACING SIDE ELEVATION

(Adjoining to 32 Park Village East)



SEE DRAWING P2229-PVE34-02-01P FOR DETAILS OF INTERNAL SECONDARY GLAZING PROPOSED FOR SECOND FLOOR WINDOW

SEE DRAWING P2229-PVE34-01-01/02P FOR DETAILS OF INTERNAL SECONDARY GLAZING PROPOSED FOR FIRST FLOOR WINDOWS

VENT LOCATION FOR PVE34-01-01V - SEE PHOTO IN DRAWING P2229-PVE34-01-01/02P

SEE DRAWING P2229-PVE34-00-01/02P FOR DETAILS OF INTERNAL SECONDARY GLAZING PROPOSED FOR GROUND FLOOR WINDOWS

SEE DRAWING P2229-PVE34-B-01/02P FOR DETAILS OF INTERNAL SECONDARY GLAZING PROPOSED FOR BASEMENT WINDOWS

SONAIR VENT - EXTERNAL COWL DETAILS - SEE DRAWING GS/ESVD (Scale 1:2)



Campbell Way  
Dinnington  
Sheffield  
S25 3QD

Tel: 01909 499 899  
W: www.grnadaglazing.com

Approved Drawing	
Approved by:	Print Signature
Date:	

Drawing Title: Listed Building Consent for HS2 Secondary Glazing

Project: 34 Park Village East

Client: CSJV

Scale: As Noted 1st issue date: 18.07.17.

Drawn by: MW Checked: RH

Drawing Number: P2229-PVE34-SE-P

Rev	Date	Notes
-	18.07.17	First issue of drawings
A	27.07.17	Sonair Vent positions amended

This drawing belongs to the above company and no unauthorised copy or disclosures can be made by or to a third party and be returned whenever required.

