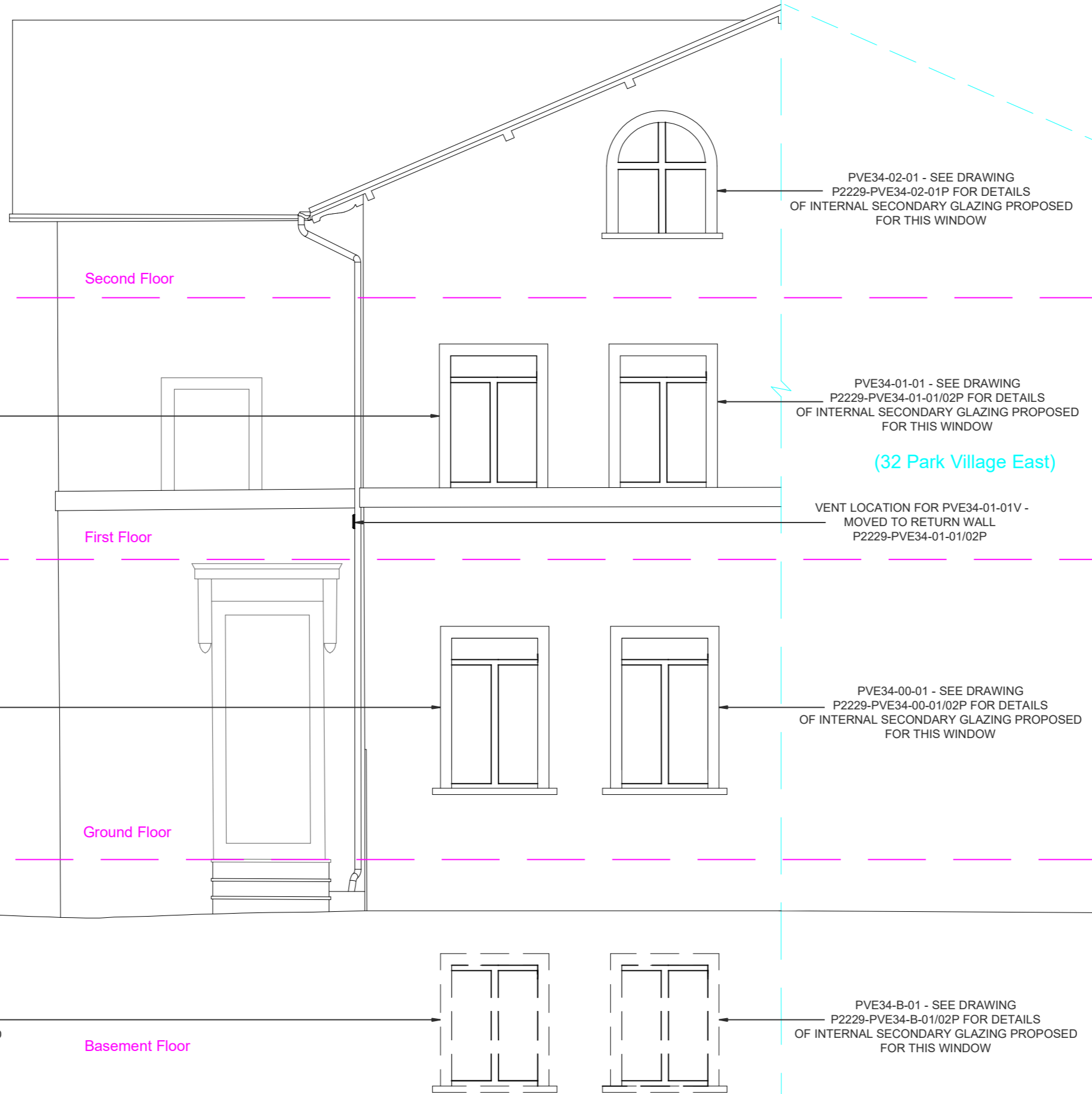


PROPOSED EAST FACING FRONT ELEVATION

Campbell Way
Dinnington
Sheffield
S25 3QD

Tel: 01909 499 899
W: www.grnadaglazing.com

☺ BUILDING



PVE34-02-01 - SEE DRAWING P2229-PVE34-02-01P FOR DETAILS OF INTERNAL SECONDARY GLAZING PROPOSED FOR THIS WINDOW

PVE34-01-01 - SEE DRAWING P2229-PVE34-01-01/02P FOR DETAILS OF INTERNAL SECONDARY GLAZING PROPOSED FOR THIS WINDOW

(32 Park Village East)

VENT LOCATION FOR PVE34-01-01V - MOVED TO RETURN WALL P2229-PVE34-01-01/02P

PVE34-00-01 - SEE DRAWING P2229-PVE34-00-01/02P FOR DETAILS OF INTERNAL SECONDARY GLAZING PROPOSED FOR THIS WINDOW

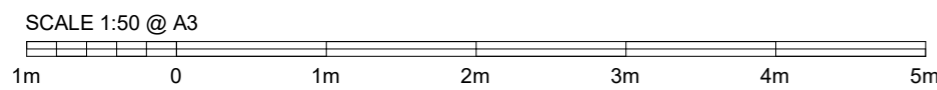
PVE34-B-01 - SEE DRAWING P2229-PVE34-B-01/02P FOR DETAILS OF INTERNAL SECONDARY GLAZING PROPOSED FOR THIS WINDOW

PVE34-01-02 - SEE DRAWING P2229-PVE34-01-01/02P FOR DETAILS OF INTERNAL SECONDARY GLAZING PROPOSED FOR THIS WINDOW

PVE34-00-02 - SEE DRAWING P2229-PVE34-00-01/02P FOR DETAILS OF INTERNAL SECONDARY GLAZING PROPOSED FOR THIS WINDOW

NOTE:
ALL LANDSCAPING VISIBLE FROM THE STREET HAS BEEN REMOVED FOR CLARITY ON ALL PLANS.

PVE34-B-02 - SEE DRAWING P2229-PVE34-B-01/02P FOR DETAILS OF INTERNAL SECONDARY GLAZING PROPOSED FOR THIS WINDOW



Approved Drawing	
Approved by:	Signature
Date:	

Drawing Title: Listed Building Consent for HS2 Secondary Glazing

Project: 34 Park Village East

Client: CSJV

Scale: As Noted 1st issue date: 18.07.17.

Drawn by: MW Checked: RH

Drawing Number: P2229-PVE34-FE-P

Rev	Date	Notes
-	18.07.17	First issue of drawings
-	27.07.17	Sonair Vents position amended

This drawing belongs to the above company and no unauthorised copy or disclosures can be made by or to a third party and be returned whenever required.

