

Scheuco thermally insulated aluminium mullion/transom roof glazing system sized to suit loadings. Detail shows 135x50mm box frames to roof. This is to be confirmed by subcontractor's design calculations for this site.

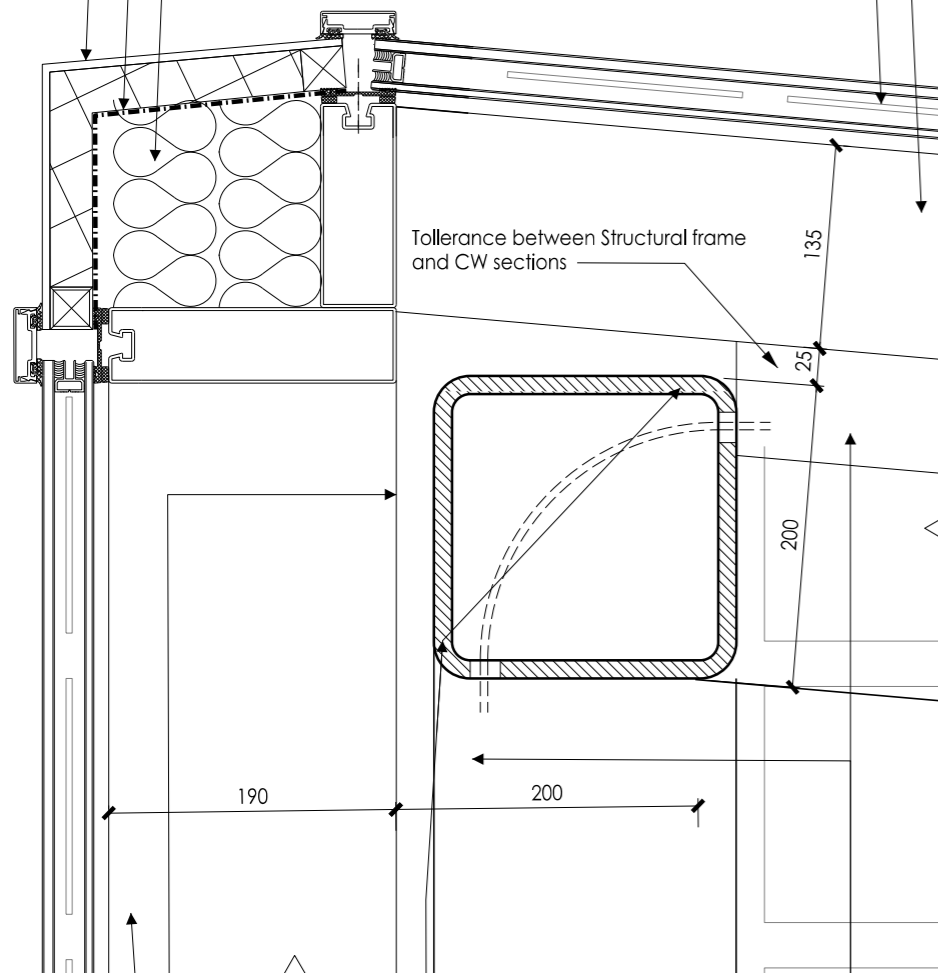
Scheuco fixed glazed unit with BIPV's fitted to facade wall system. Refer to Atrium Schedule 1213_WD_534 for locations. Romag PowerGlaz or similar Building Integrated Photovoltaic (BIPV) laminated glass. Electrical connection with discrete edge and pair mounting. Wiring to be contained within 50x50 PPC metal conduits fitted to underside of box frame. BIPV solar array to connect to PV solar generator on adjoining roof.

PPC aluminium or SS faced insulated composite ridge panel glazed into system with PPC stainless steel cover caps.

EPDM weatherstrip glazed into frames.

Curtain wall installer to fill all voids with insulation.

Tolerance between Structural frame and CW sections



Pre-drilled holes in SHS structure to allow passage of BIPV wiring to structural engineer's specification & electrical sub-contractors requirements.

50x75 deep PPC aluminium conduit fixed to underside of curtain wall & roof frame.

200x200 SHS primary structural frame to structural engineer's design and detail.

Scheuco thermally insulated aluminium mullion/transom vertical glazing system sized to suit loadings. Detail shows 190x50mm box frames to be confirmed by subcontractor's design calculations.

Atrium Ridge Detail 1:5

PPC aluminium insulated composite overhang panel glazed into system with PPC aluminium shallow cover caps.

Cavity tray DPC above gutter.

Marmox Thermoblocks in brickwall.

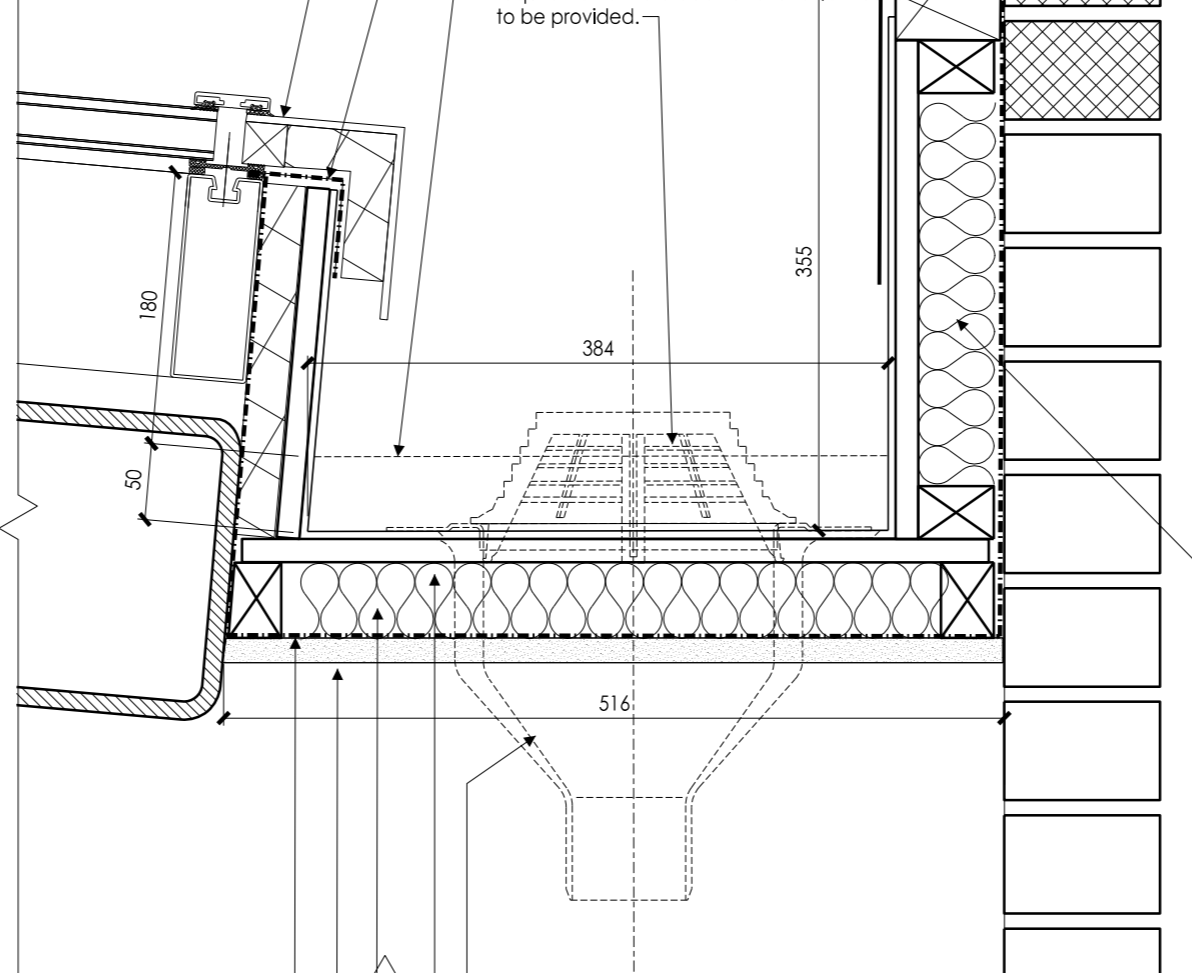
Overlap brickwork flashing into stainless steel gutter. Flashing to be compatible with all contact materials.

Treated softwood chamfered to form fillet.

EPDM weatherstrip glazed into frames and to overlap and seal to SS gutter.

50mm fall over length of gutter.

Harmer or similar insulated spigot outlet with domed leaf guard sized to suit drainage requirements. Note additional overflow outlet to be provided.



Insulated internal rainwater pipework sized to suit drainage calculations. Encase pipework within plasterboard lining.

Marine Grade WBP Plywood base to support preformed austenitic stainless steel 316 gutter. with fall to internal outlet and overflow.

Insulate gutter and upstand with 50mm thick Celotex GA4000.

Plasterboard lining to base of gutter.

AVCL sealed from glazed frame, underside of gutter and up side of brickwork and sealed under DPC.

Atrium Gutter Detail 1:5

GENERAL NOTES

DO NOT SCALE FROM THIS DRAWING. FIGURED DIMENSIONS ARE TAKEN TO STRUCTURE UNLESS INDICATED OTHERWISE. ALL DIMENSIONS TO BE CHECKED ON SITE PRIOR TO COMMENCEMENT OF WORK. DRAWING TO BE READ IN CONJUNCTION WITH ALL OTHER ARCHITECT'S DRAWINGS, CONSULTANTS' AND SPECIALISTS' DRAWINGS, CONSTRUCTION NOTES, SPECIFICATIONS AND EMPLOYER'S REQUIREMENTS WHERE APPLICABLE. ANY DISCREPANCY MUST BE BROUGHT TO THE ATTENTION OF PCKO. IF IN DOUBT, ASK. ANY MODIFICATION TO THIS DRAWING MUST BE CARRIED OUT BY PCKO. THIS DRAWING REMAINS UNDER THE COPYRIGHT OF PCKO ARCHITECTS LIMITED. PLEASE OBTAIN PERMISSION BEFORE COPYING. WHERE METHOD OF CONSTRUCTION INCORPORATES TIMBER/LIGHT GAUGE STEEL FRAME ALL ELEMENTS OF FRAME INCLUDING STUD LOCATIONS, NOGGIN'S, SHEATHING, LINTELS, TRUSSESS AND WIND BRACING TO BE TO FRAME MANUFACTURER'S DESIGN, DETAIL AND SPECIFICATION. ALL STRUCTURAL ELEMENTS ARE SHOWN INDICATIVELY. FOR ALL ELEMENTS OF STRUCTURE REFER TO STRUCTURAL ENGINEER'S AND SPECIALIST SUB-CONTRACTOR/FABRICATOR'S DESIGN, DETAIL AND SPECIFICATION. ALL MECHANICAL AND ELECTRICAL ELEMENTS ARE SHOWN INDICATIVELY. FOR ALL M&E INSTALLATIONS REFER TO BUILDING SERVICES ENGINEER'S AND SPECIALIST SUB-CONTRACTOR'S DESIGN, DETAIL AND SPECIFICATION.

DATE	REV.	DESCRIPTION	BY	CHECKED
20.06.17	D	Gutter insulation specified	RS	RS
03.02.17	C	Issued for Tender	RS	RS
24.01.17	B	Aluminium flashings noted. Fire protection to structural steelwork omitted. Tolerance gap shown between structural steelwork and CW sections. All as email instruction 17.01.17. Gutter width reduced to suit new lift shaft wall position	RS	RS
05.01.17	A	Gutter revised. Reference to VISS omitted from CW system.	RS	RS
01.06.16	/	Issued for comment	JF	PH



5 - 8 HARDWICK STREET
LONDON EC1R 4RG
TEL: 020 - 7372 - 8918
www.pcko.co.uk

ARCHITECTS INTERIOR DESIGNERS
MASTER PLANNERS URBAN DESIGNERS

CLIENT	KIER GROUP		
PROJECT	Greenwood Place		
DRAWING TITLE	Curtain Wall - Atrium Roof Ridge & Gutter Detail		
STATUS	TENDER		
SCALE	1:5@A-3	DRAWN BY	BJ
DATE	2016.04	CHECKED BY	PH
DRAWING NO.	1213_WD_490	REVISION	D