

GRID

GENERAL NOTES

DO NOT SCALE FROM THIS DRAWING.
 FIGURED DIMENSIONS ARE TAKEN TO STRUCTURE UNLESS INDICATED OTHERWISE.
 ALL DIMENSIONS TO BE CHECKED ON SITE PRIOR TO COMMENCEMENT OF WORK.
 DRAWING TO BE READ IN CONJUNCTION WITH ALL OTHER ARCHITECTS DRAWINGS, CONSULTANTS AND SPECIALISTS DRAWINGS, CONSTRUCTION NOTES, SPECIFICATIONS AND EMPLOYER'S REQUIREMENTS WHERE APPLICABLE.
 ANY DISCREPANCY MUST BE BROUGHT TO THE ATTENTION OF PCKO. IF IN DOUBT, ASK.
 ANY MODIFICATION TO THIS DRAWING MUST BE CARRIED OUT BY PCKO.
 THIS DRAWING REMAINS UNDER THE COPYRIGHT OF PCKO ARCHITECTS LIMITED. PLEASE OBTAIN PERMISSION BEFORE COPYING.
 WHERE METHOD OF CONSTRUCTION INCORPORATES TIMBER/LIGHT GAUGE STEEL FRAME ALL ELEMENTS OF FRAME INCLUDING STUD LOCATIONS, NOGGINS, SHEATHING, UNITS, TRUSSESS AND WIND BRACING TO BE TO FRAME MANUFACTURER'S DESIGN, DETAIL AND SPECIFICATION.
 ALL STRUCTURAL ELEMENTS ARE SHOWN INDICATIVELY. FOR ALL ELEMENTS OF STRUCTURE REFER TO STRUCTURAL ENGINEER'S AND SPECIALIST SUB-CONTRACTOR/FABRICATOR'S DESIGN, DETAIL AND SPECIFICATION.
 ALL MECHANICAL AND ELECTRICAL ELEMENTS ARE SHOWN INDICATIVELY. FOR ALL M&E INSTALLATIONS REFER TO BUILDING SERVICES ENGINEER'S AND SPECIALIST SUB-CONTRACTOR'S DESIGN, DETAIL AND SPECIFICATION.

Print drawing in colour

A HEAD DETAIL

60 min AIM VRB plus cavity barrier (or equal approved) fixed in accordance with manufacturers recommendations

Wall ties within 300mm of angle support

Brickwork to be supported via Ancon or similar MDC support system Ref: MDC/153/8.1 or 4/P115 on cast in 30/20 channel (TBC by Ancon/SE). Refer to SE drawings for locations. Brackets to be connected to slab through thermal isolator pads as Ancon recommendations.

Cavity tray DPC dressed over brickwork support, Small profile weephole, Rytweep or similar approved

Thermabate cavity closer 1/2 hr fire resistance, fitted in accordance with manufacturers instructions

PPC steel plate (colour to match windows) welded to u/s of brick support angle/brackets.

Arbosil 1096 silicone sealant from Adsead Ratcliffe or similar approved applied as manufacturers recommendations between plate and frame (including backing strip as necessary)

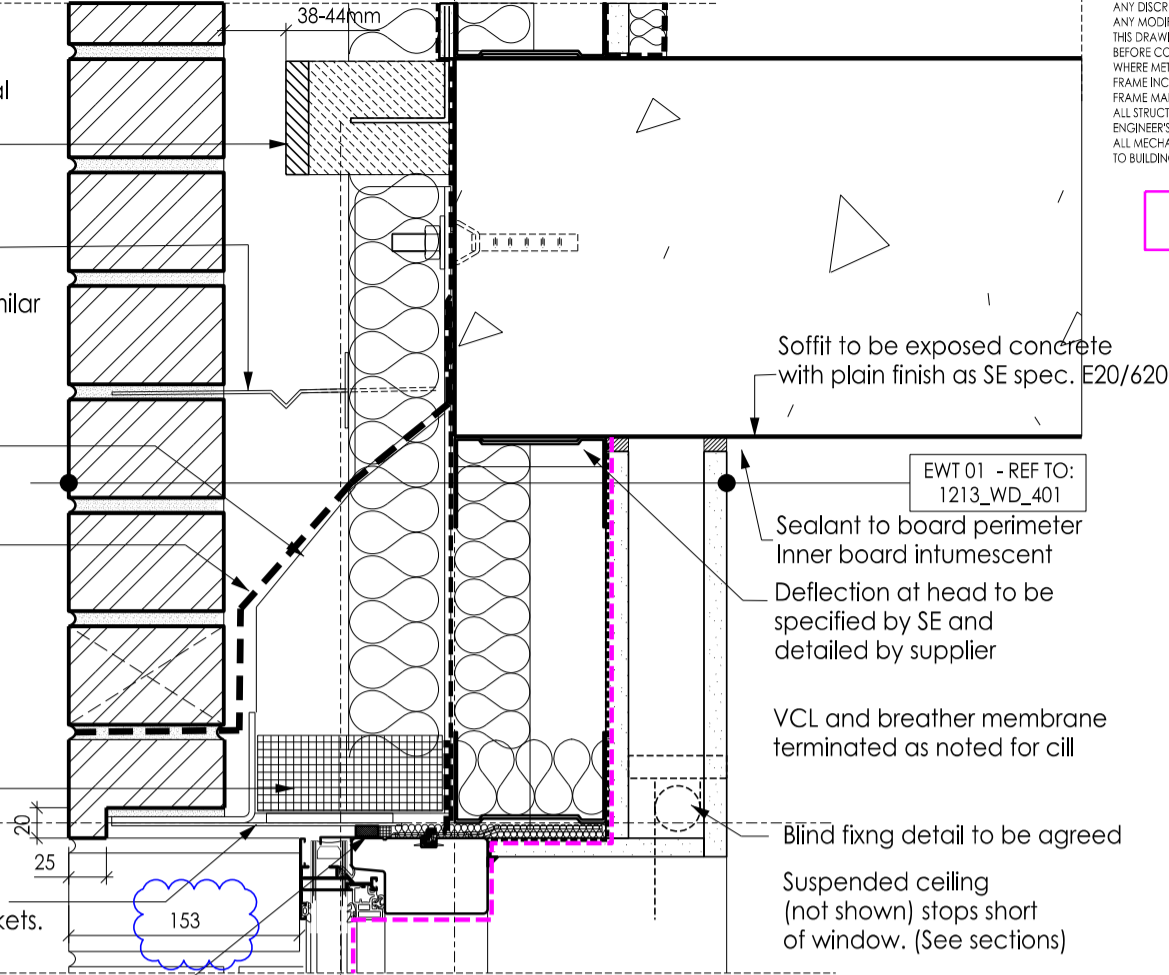
Compriband 600 impregnated foam tape

Stainless steel angle for window support if required by window supplier

PPC aluminium cill with 5mm upstand at jamb edges. Fixed to frame (fixings to be agreed)

Thermabate cavity closer 1/2 hr fire resistance, fitted in accordance with manufacturers instructions

Wall ties with insulation retaining disks to Structural Engineer details



Soffit to be exposed concrete with plain finish as SE spec. E20/620

EWT 01 - REF TO: 1213_WD_401

Sealant to board perimeter Inner board intumescent

Deflection at head to be specified by SE and detailed by supplier

VCL and breather membrane terminated as noted for cill

Blind fixing detail to be agreed

Suspended ceiling (not shown) stops short of window. (See sections)

Velfac 200 composite window or similar approved, fixed back to LGS frame to suppliers detail.

18mm MDF window board with 3mm radii on front edge. Fixed to LGS frame and supported on Gypliner brackets as suppliers recommendations.

Illbruck FM230 window foam + polyurethane

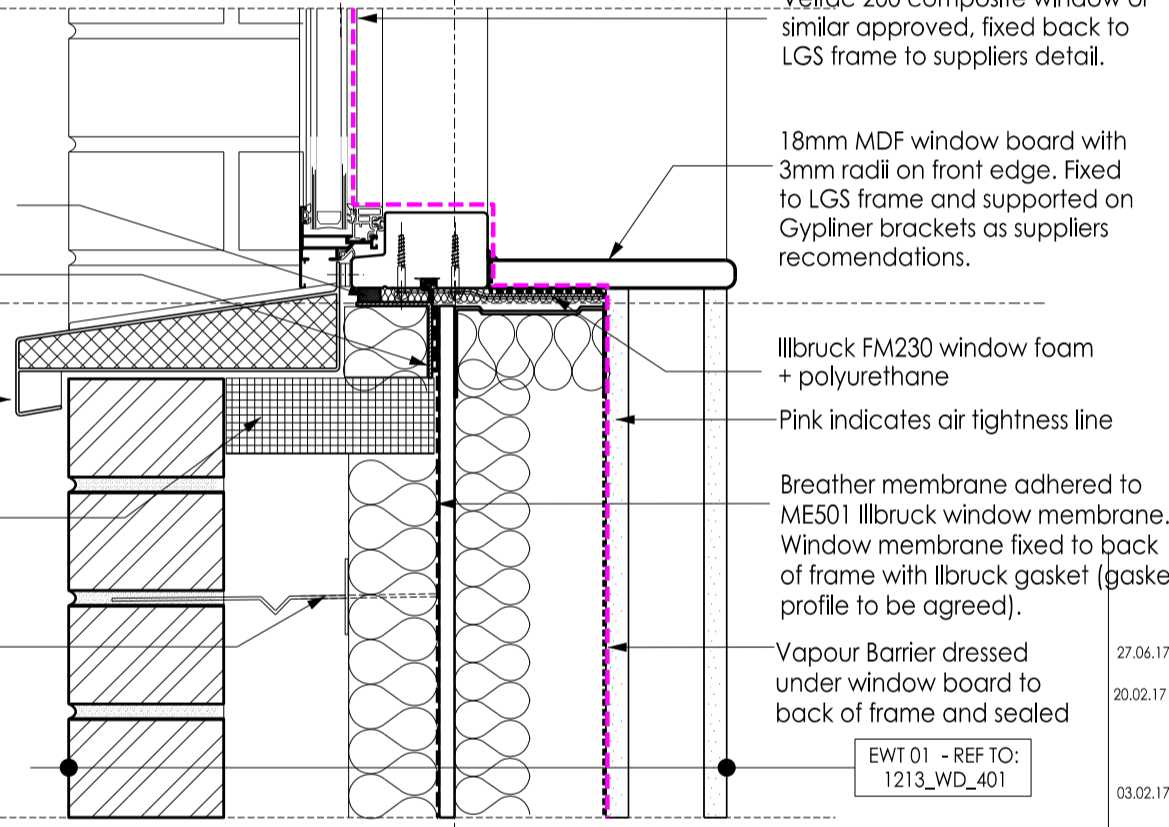
Pink indicates air tightness line

Breather membrane adhered to ME501 Illbruck window membrane. Window membrane fixed to back of frame with Illbruck gasket (gasket profile to be agreed).

Vapour Barrier dressed under window board to back of frame and sealed

EWT 01 - REF TO: 1213_WD_401

B CILL DETAIL



Edge of slab and Metsec

EWT 01 - REF TO: 1213_WD_401

VCL and breather membrane terminated as noted for cill

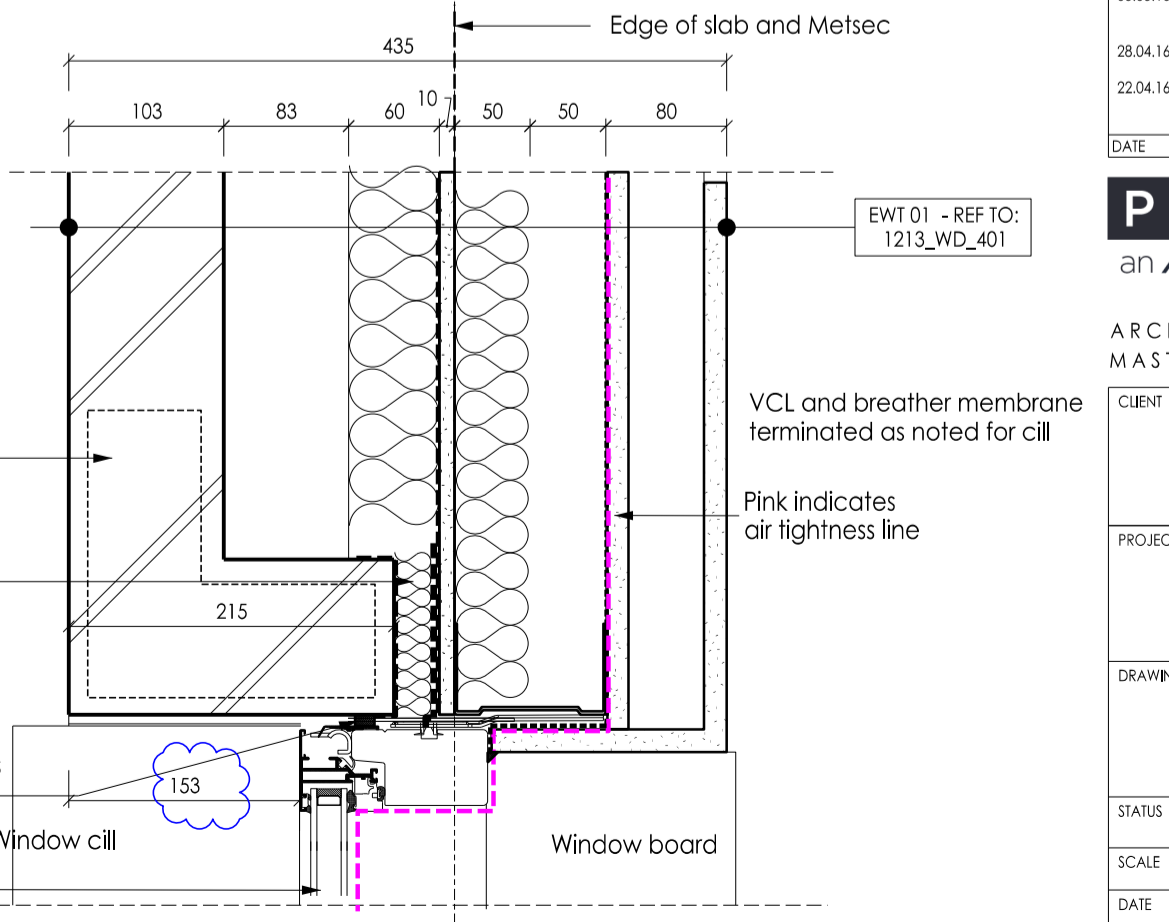
Pink indicates air tightness line

C JAMB DETAIL

30mm Roclose cavity closer fitted in accordance with manufacturers recommendations

Arbosil 1096 silicone sealant from Adsead Ratcliffe or similar approved applied as manufacturers recommendations (including backing strip as necessary)

Velfac 200 composite window or similar approved, fixed back to LGS frame to suppliers detail.



Window cill

Window board

DATE	REV.	DESCRIPTION	BY	CHECKED
27.06.17	G	Window position revised in accordance with manufacturers recommendation	RS	PH
20.02.17	F	Air tightness line indicated. Window head raised by 10mm. concrete soffit note revised all as KCL comments 10.02.17. Cavity DPC dressed back to breather membrane. termination of VCL revised. Issued for Construction	RS	RS
03.02.17	E	Steel plate shown at window head in lieu of Kevington brick unit. MDF window board in lieu of formica as latest ER's. Cavity closers revised. Cavity barrier rating confirmed.	RS	PH
15.06.16	D	Brickwork head support revised to Ancon recommendations. Tender status issue	RS	PH
03.05.16	C	Strip of CP board removed behind brickwork support hangars, movement joint under bwk angle support omitted, all as agreed meeting 29.04.16	RS	PH
28.04.16	B	Formica faced window board spec amended.	RS	PH
22.04.16	A	Ancon head support system reference added. Formica faced cill indicated. Alu cill modified. Blind fixing noted. Sealing of breather membrane and VCL noted.	RS	PH



5 - 8 HARDWICK STREET
 LONDON EC1R 4RG
 TEL: 020 - 7372 - 8918
 www.pcko.co.uk

ARCHITECTS INTERIOR DESIGNERS
 MASTER PLANNERS URBAN DESIGNERS

CLIENT	Kier Group		
PROJECT	Greenwood Centre		
DRAWING TITLE	Typical Window Detail		
STATUS	CONSTRUCTION		
SCALE	1:5 @A3	DRAWN BY	RS
DATE	2016.03	CHECKED BY	PH
DRAWING NO.	1213_WD_431	REVISION	G