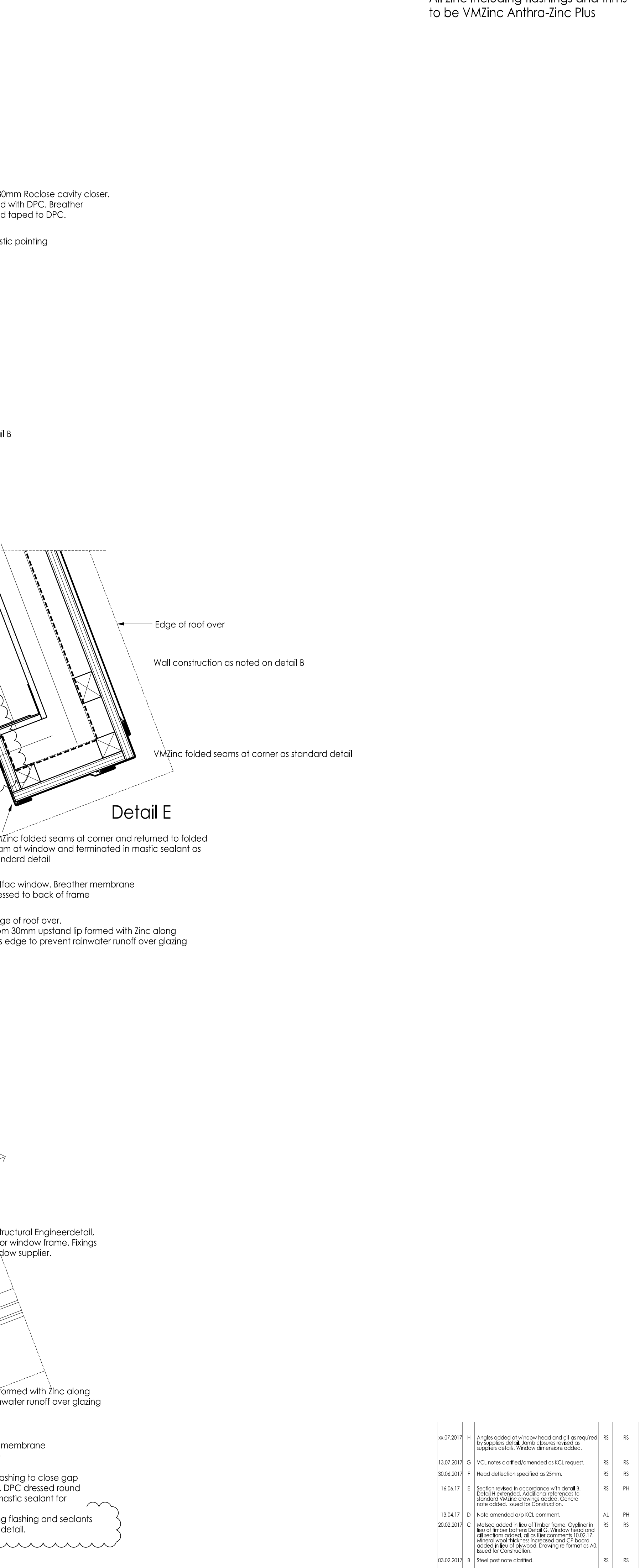
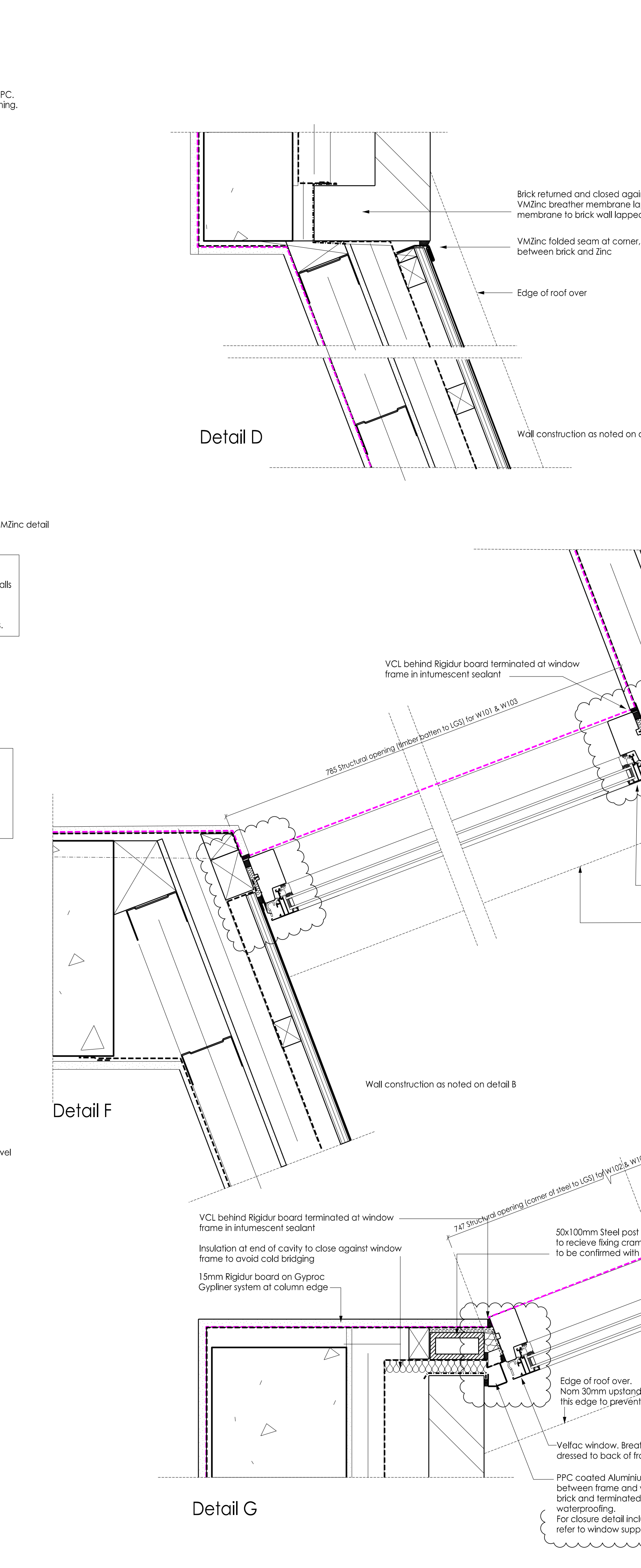
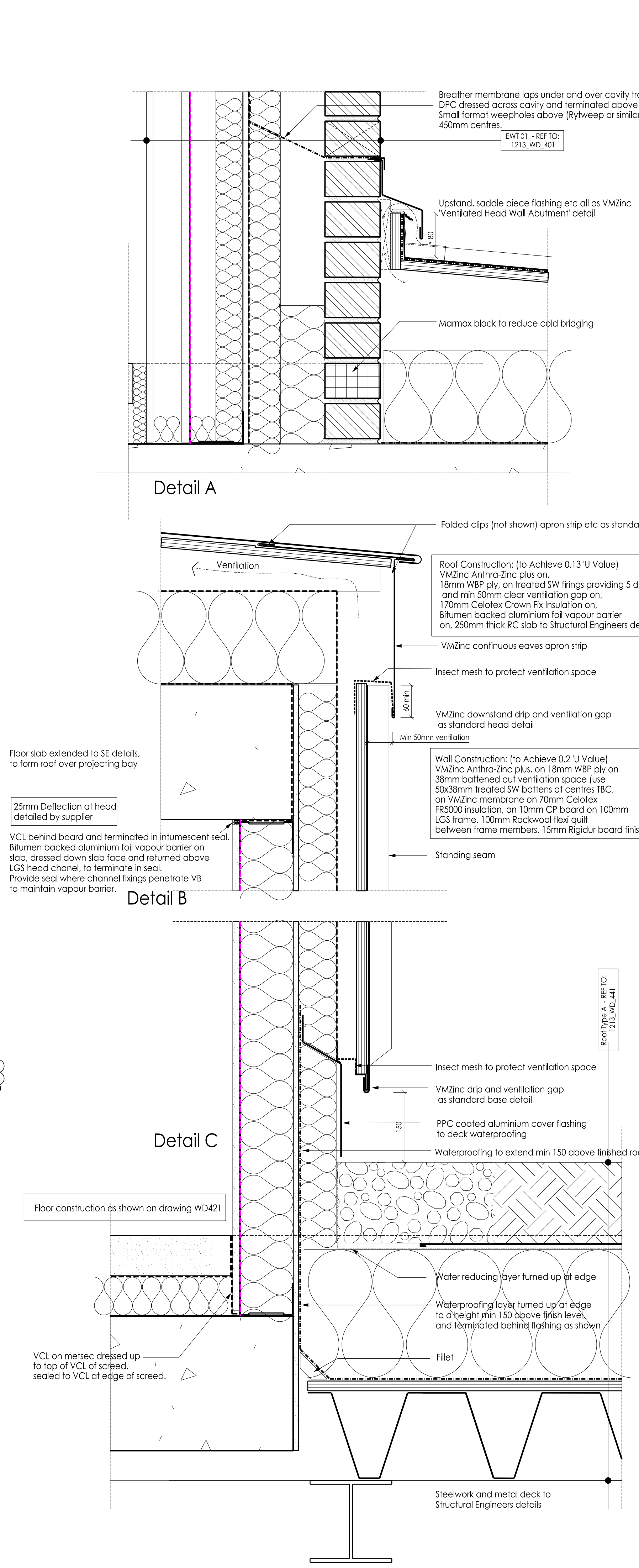
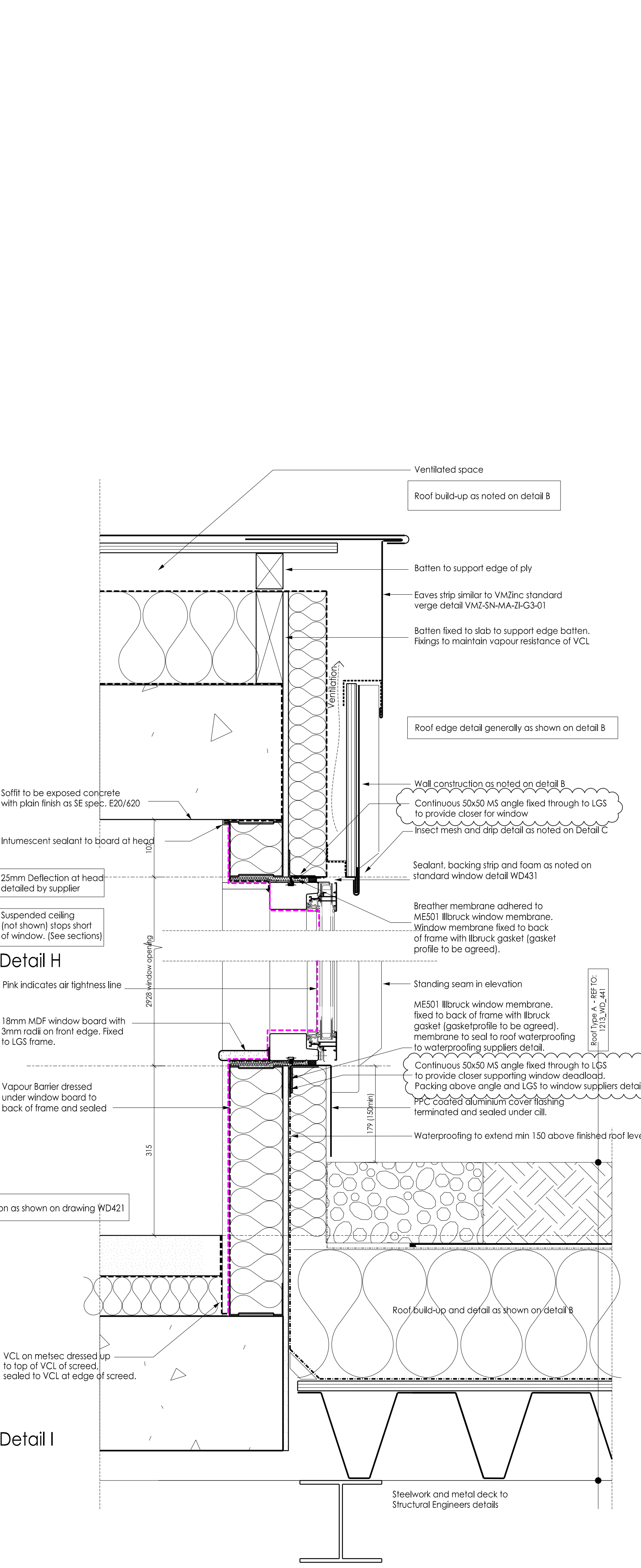
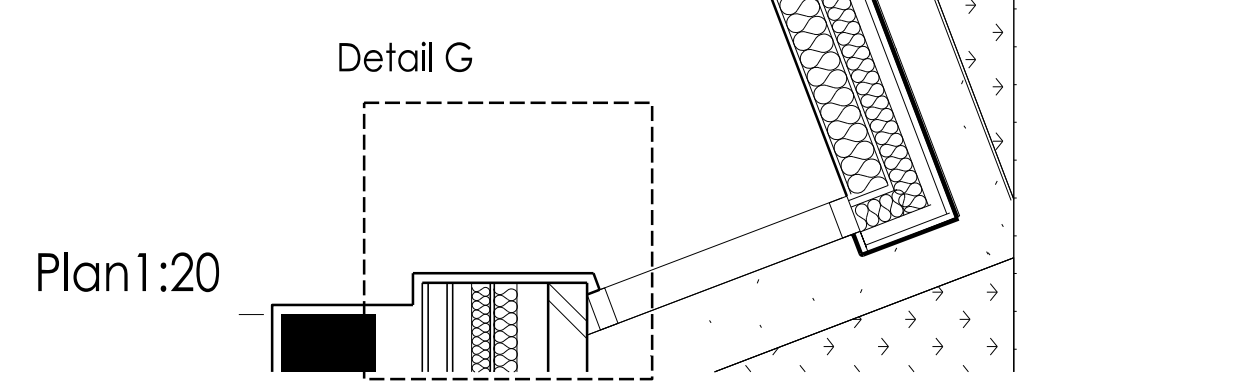
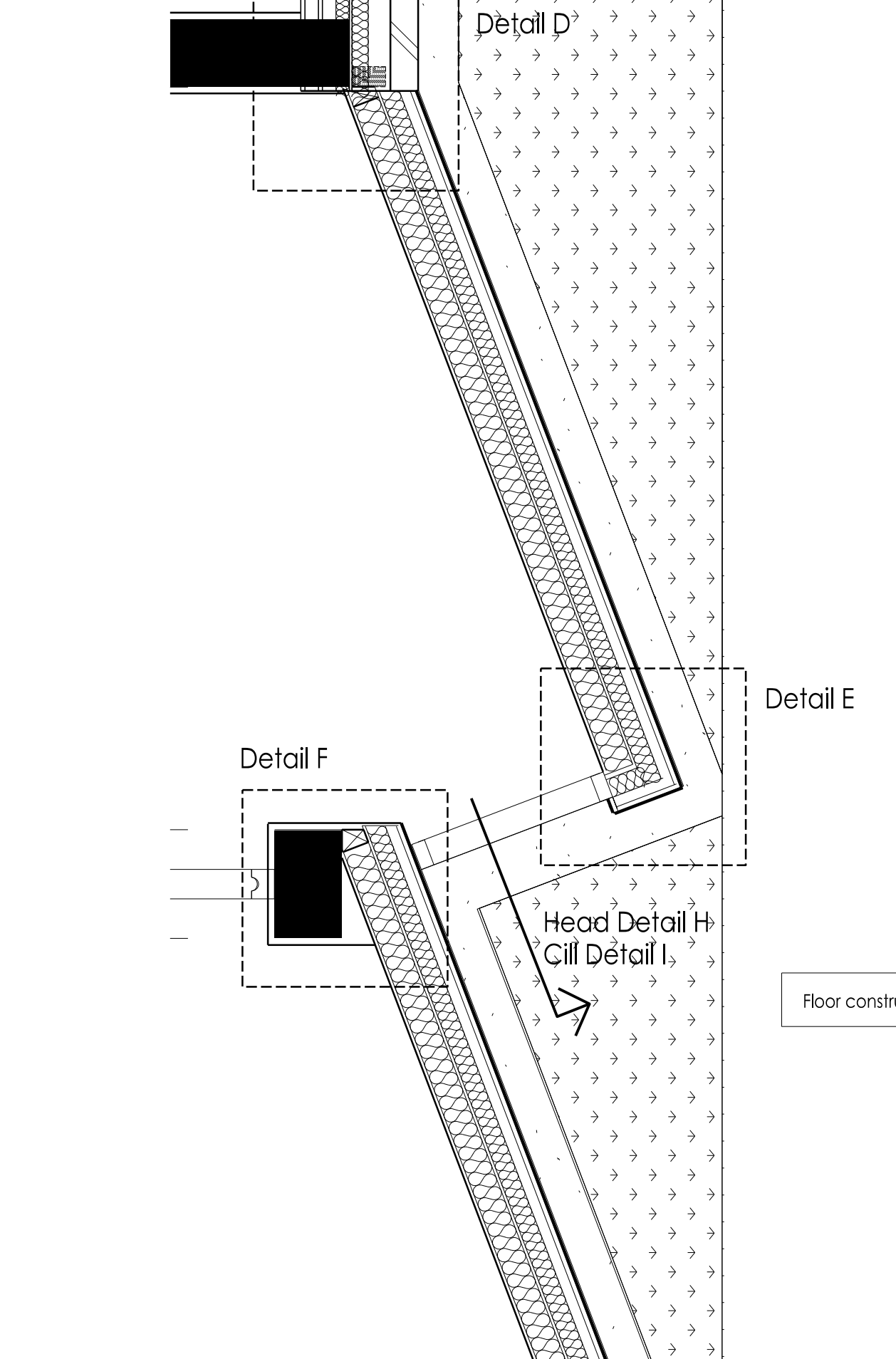
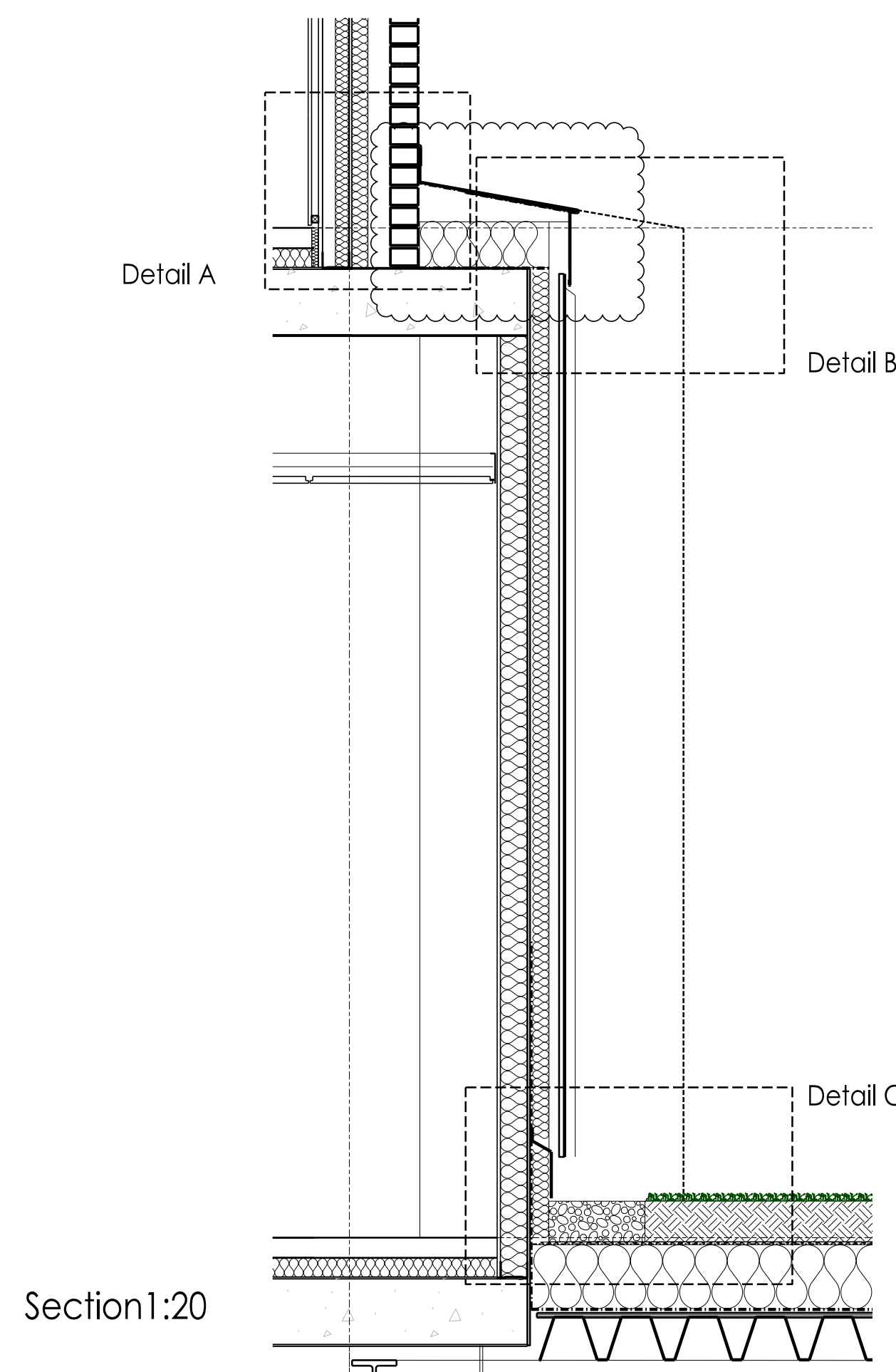


GENERAL NOTES
 1. All work to be in accordance with the relevant British Standards and Codes of Practice.
 2. All materials to be of the highest quality and to be supplied by the named suppliers.
 3. All work to be completed in accordance with the relevant British Standards and Codes of Practice.
 4. All work to be completed in accordance with the relevant British Standards and Codes of Practice.
 5. All work to be completed in accordance with the relevant British Standards and Codes of Practice.
 6. All work to be completed in accordance with the relevant British Standards and Codes of Practice.
 7. All work to be completed in accordance with the relevant British Standards and Codes of Practice.
 8. All work to be completed in accordance with the relevant British Standards and Codes of Practice.
 9. All work to be completed in accordance with the relevant British Standards and Codes of Practice.
 10. All work to be completed in accordance with the relevant British Standards and Codes of Practice.

Print drawing in colour

All zinc including flashings and trims to be VMZinc Anthra-Zinc Plus



10/2/2017	1	Issue 1 of window and roof details	RS	RS
10/2/2017	2	VCL mastic detail updated as per supplier	RS	RS
28/03/2017	3	VCL mastic detail updated as per supplier	RS	RS
14/04/17	4	Waterproofing updated as per supplier	RS	RS
15/04/17	5	Waterproofing updated as per supplier	RS	RS
20/04/17	6	Waterproofing updated as per supplier	RS	RS
23/04/17	7	Waterproofing updated as per supplier	RS	RS
23/04/17	8	Waterproofing updated as per supplier	RS	RS
23/04/17	9	Waterproofing updated as per supplier	RS	RS
23/04/17	10	Waterproofing updated as per supplier	RS	RS
23/04/17	11	Waterproofing updated as per supplier	RS	RS
23/04/17	12	Waterproofing updated as per supplier	RS	RS
23/04/17	13	Waterproofing updated as per supplier	RS	RS
23/04/17	14	Waterproofing updated as per supplier	RS	RS
23/04/17	15	Waterproofing updated as per supplier	RS	RS
23/04/17	16	Waterproofing updated as per supplier	RS	RS
23/04/17	17	Waterproofing updated as per supplier	RS	RS
23/04/17	18	Waterproofing updated as per supplier	RS	RS
23/04/17	19	Waterproofing updated as per supplier	RS	RS
23/04/17	20	Waterproofing updated as per supplier	RS	RS
23/04/17	21	Waterproofing updated as per supplier	RS	RS
23/04/17	22	Waterproofing updated as per supplier	RS	RS
23/04/17	23	Waterproofing updated as per supplier	RS	RS
23/04/17	24	Waterproofing updated as per supplier	RS	RS
23/04/17	25	Waterproofing updated as per supplier	RS	RS
23/04/17	26	Waterproofing updated as per supplier	RS	RS
23/04/17	27	Waterproofing updated as per supplier	RS	RS
23/04/17	28	Waterproofing updated as per supplier	RS	RS
23/04/17	29	Waterproofing updated as per supplier	RS	RS
23/04/17	30	Waterproofing updated as per supplier	RS	RS

45-51 LOWLANDS ROAD
 HARBOR - CH - 116 - HLL
 MEDUSEX HAI - 3AN
 TEL: 0208 864 7330
 www.pck.co.uk

PCK ARCHITECTS INTERIOR DESIGNERS
 MASTER PLANNERS URBAN DESIGNERS

CLIENT: **Kier Group**

PROJECT: **Greenwood Centre**

DRAWING TITLE: **Projecting Wall Details 1st Floor Meeting Rooms**

SCALE: 1:20 & 1:5 B.A.D. DRAWN BY: RS
 DATE: 2016/04 CHECKED BY: PH
 DRAWING NO: 1213_WD430 REVISION: H