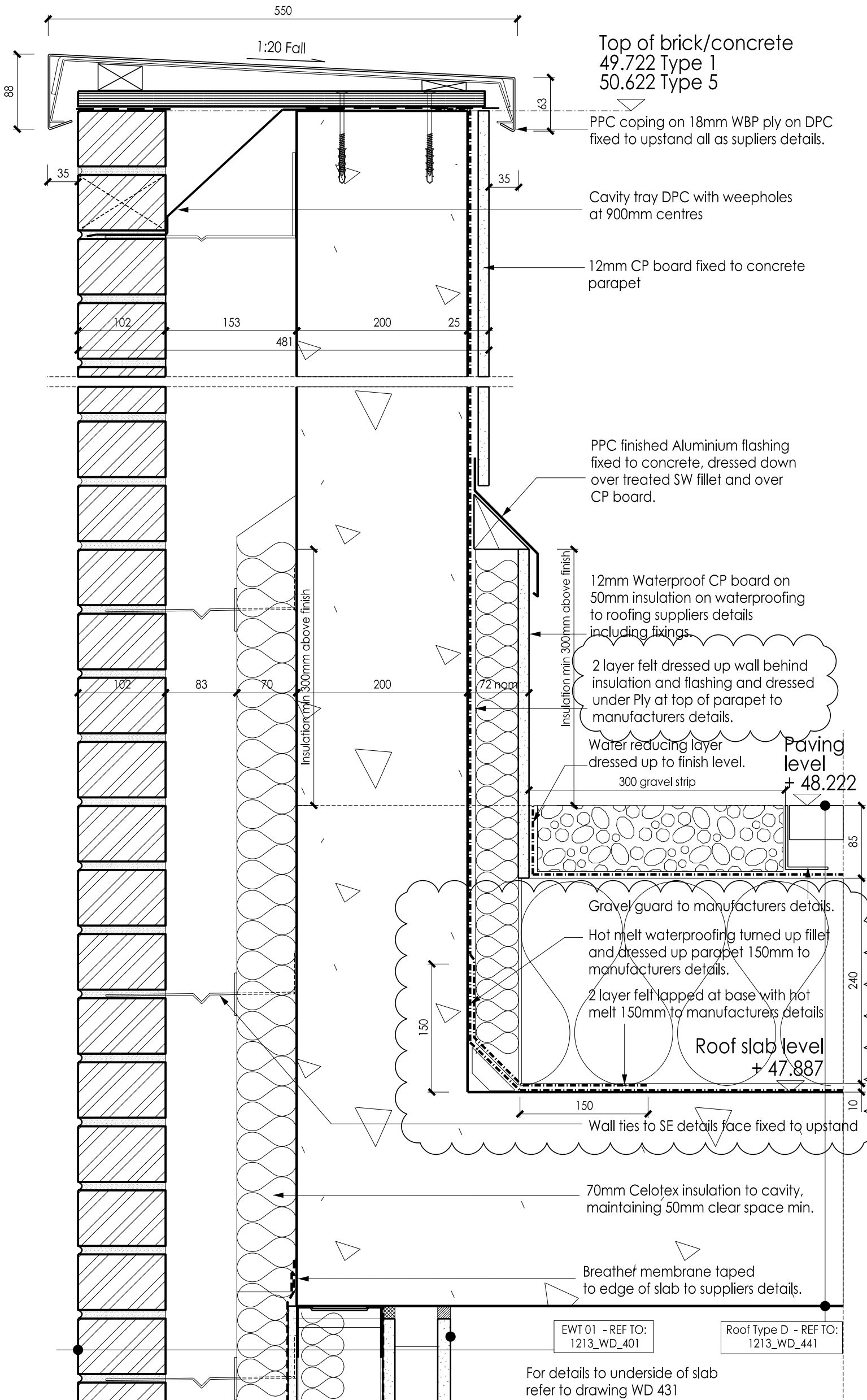


**GENERAL NOTES**

DO NOT SCALE FROM THIS DRAWING.  
 FIGURED DIMENSIONS ARE TAKEN TO STRUCTURE UNLESS INDICATED OTHERWISE.  
 ALL DIMENSIONS TO BE CHECKED ON SITE PRIOR TO COMMENCEMENT OF WORK.  
 DRAWING TO BE READ IN CONJUNCTION WITH ALL OTHER ARCHITECTS DRAWINGS, CONSULTANTS AND SPECIALISTS DRAWINGS, CONSTRUCTION NOTES, SPECIFICATIONS AND EMPLOYER'S REQUIREMENTS WHERE APPLICABLE.  
 ANY DISCREPANCY MUST BE BROUGHT TO THE ATTENTION OF PCKO. IF IN DOUBT, ASK.  
 ANY MODIFICATION TO THIS DRAWING MUST BE CARRIED OUT BY PCKO.  
 THIS DRAWING REMAINS UNDER THE COPYRIGHT OF PCKO ARCHITECTS LIMITED. PLEASE OBTAIN PERMISSION BEFORE COPYING.  
 WHERE METHOD OF CONSTRUCTION INCORPORATES TIMBER/LIGHT GAUGE STEEL FRAME ALL ELEMENTS OF FRAME INCLUDING STUD LOCATIONS, NOGGINS, SHEATHING, UNITELS, TRUSSESS AND WIND BRACING TO BE TO FRAME MANUFACTURER'S DESIGN, DETAIL AND SPECIFICATION.  
 ALL STRUCTURAL ELEMENTS ARE SHOWN INDICATIVELY. FOR ALL ELEMENTS OF STRUCTURE REFER TO STRUCTURAL ENGINEER'S AND SPECIALIST SUB-CONTRACTOR/FABRICATOR'S DESIGN, DETAIL AND SPECIFICATION.  
 ALL MECHANICAL AND ELECTRICAL ELEMENTS ARE SHOWN INDICATIVELY. FOR ALL M&E INSTALLATIONS REFER TO BUILDING SERVICES ENGINEER'S AND SPECIALIST SUB-CONTRACTOR'S DESIGN, DETAIL AND SPECIFICATION.



DATE	REV.	DESCRIPTION	BY	CHECKED
10.03.17	A	Waterproofing notes revised, gravel guard shown. Issued for Construction	RS	RS
27.02.17	/	KCL comments 17.01.17 incorporated	RS	RS

**PCKO**  
 an HR company

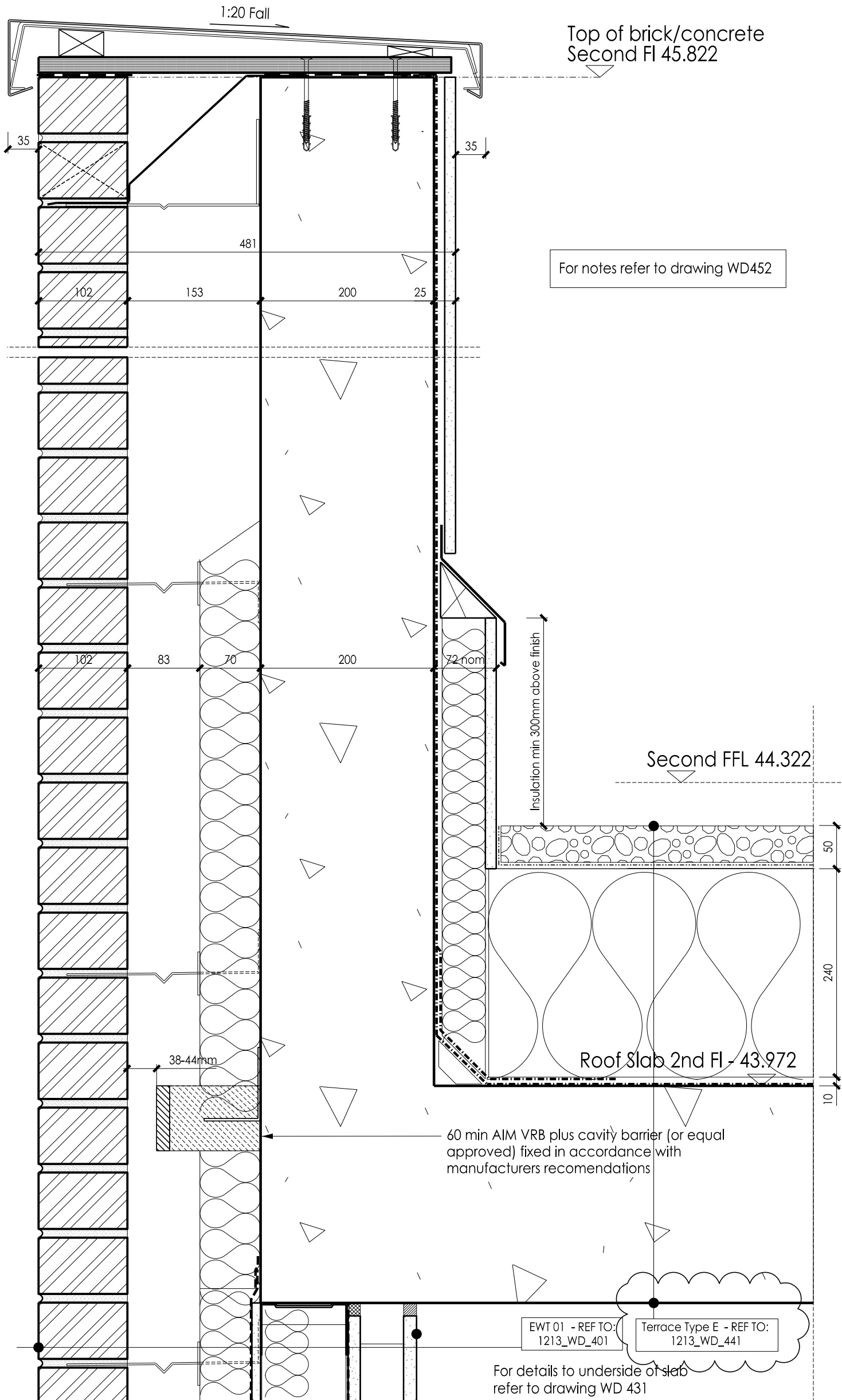
5 - 8 HARDWICK STREET  
 LONDON EC1R 4RG  
 TEL: 020 - 7372 - 8918  
 www.pcko.co.uk

ARCHITECTS INTERIOR DESIGNERS  
 MASTER PLANNERS URBAN DESIGNERS

CLIENT	Kier Group		
PROJECT	Greenwood Centre		
DRAWING TITLE	Roof Parapet Types 1 & 5		
STATUS	CONSTRUCTION		
SCALE	1:5 @A3	DRAWN BY	RS
DATE	2016.12	CHECKED BY	PH
DRAWING NO.	1213_WD_452	REVISION	A

**GENERAL NOTES**

DO NOT SCALE FROM THIS DRAWING.  
 FIGURED DIMENSIONS ARE TAKEN TO STRUCTURE UNLESS INDICATED OTHERWISE.  
 ALL DIMENSIONS TO BE CHECKED ON SITE PRIOR TO COMMENCEMENT OF WORK.  
 DRAWING TO BE READ IN CONJUNCTION WITH ALL OTHER ARCHITECTS DRAWINGS, CONSULTANTS AND SPECIALISTS DRAWINGS, CONSTRUCTION NOTES, SPECIFICATIONS AND EMPLOYER'S REQUIREMENTS WHERE APPLICABLE.  
 ANY DISCREPANCY MUST BE BROUGHT TO THE ATTENTION OF PCKO. IF IN DOUBT, ASK.  
 ANY MODIFICATION TO THIS DRAWING MUST BE CARRIED OUT BY PCKO.  
 THIS DRAWING REMAINS UNDER THE COPYRIGHT OF PCKO ARCHITECTS LIMITED. PLEASE OBTAIN PERMISSION BEFORE COPYING.  
 WHERE METHOD OF CONSTRUCTION INCORPORATES TIMBER/LIGHT GAUGE STEEL FRAME ALL ELEMENTS OF FRAME INCLUDING STUD LOCATIONS, NOGGINS, SHEATHING, UNITS, TRUSSESS AND WIND BRACING TO BE TO FRAME MANUFACTURER'S DESIGN, DETAIL AND SPECIFICATION.  
 ALL STRUCTURAL ELEMENTS ARE SHOWN INDICATIVELY. FOR ALL ELEMENTS OF STRUCTURE REFER TO STRUCTURAL ENGINEER'S AND SPECIALIST SUB-CONTRACTOR/FABRICATOR'S DESIGN, DETAIL AND SPECIFICATION.  
 ALL MECHANICAL AND ELECTRICAL ELEMENTS ARE SHOWN INDICATIVELY. FOR ALL M&E INSTALLATIONS REFER TO BUILDING SERVICES ENGINEER'S AND SPECIALIST SUB-CONTRACTOR'S DESIGN, DETAIL AND SPECIFICATION.



For notes refer to drawing WD452

10.03.17	A	Roof type changed. Issued for Construction	RS	RS
DATE	REV.	DESCRIPTION	BY	CHECKED



5 - 8 HARDWICK STREET  
 LONDON EC1R 4RG  
 TEL: 020 - 7372 - 8918  
 www.pcko.co.uk

ARCHITECTS INTERIOR DESIGNERS  
 MASTER PLANNERS URBAN DESIGNERS

CLIENT	Kier Group		
PROJECT	Greenwood Centre		
DRAWING TITLE	Terrace Parapet Type 1		
STATUS	CONSTRUCTION		
SCALE	1:5 @A3	DRAWN BY	RS
DATE	2016.12	CHECKED BY	PH
DRAWING NO.	1213_WD_456	REVISION	A

Top of glazing  
50.022

Laminated and toughened glass parapet balustrade, fixed back to concrete parapet with stainless steel fixings. Glass thickness TBC. Balustrade to comply with requirements of AD N of the building regulations and glazing to resist horizontal forces as per AD K of the building regulations, all to specialist suppliers detailed design. See drawing WD 451 for design intent.

Glazing at roof level on Grid 8, to be positioned to line through with parapet type 3 adjacent (drawing WD545).

Top of brick/concrete  
49.722

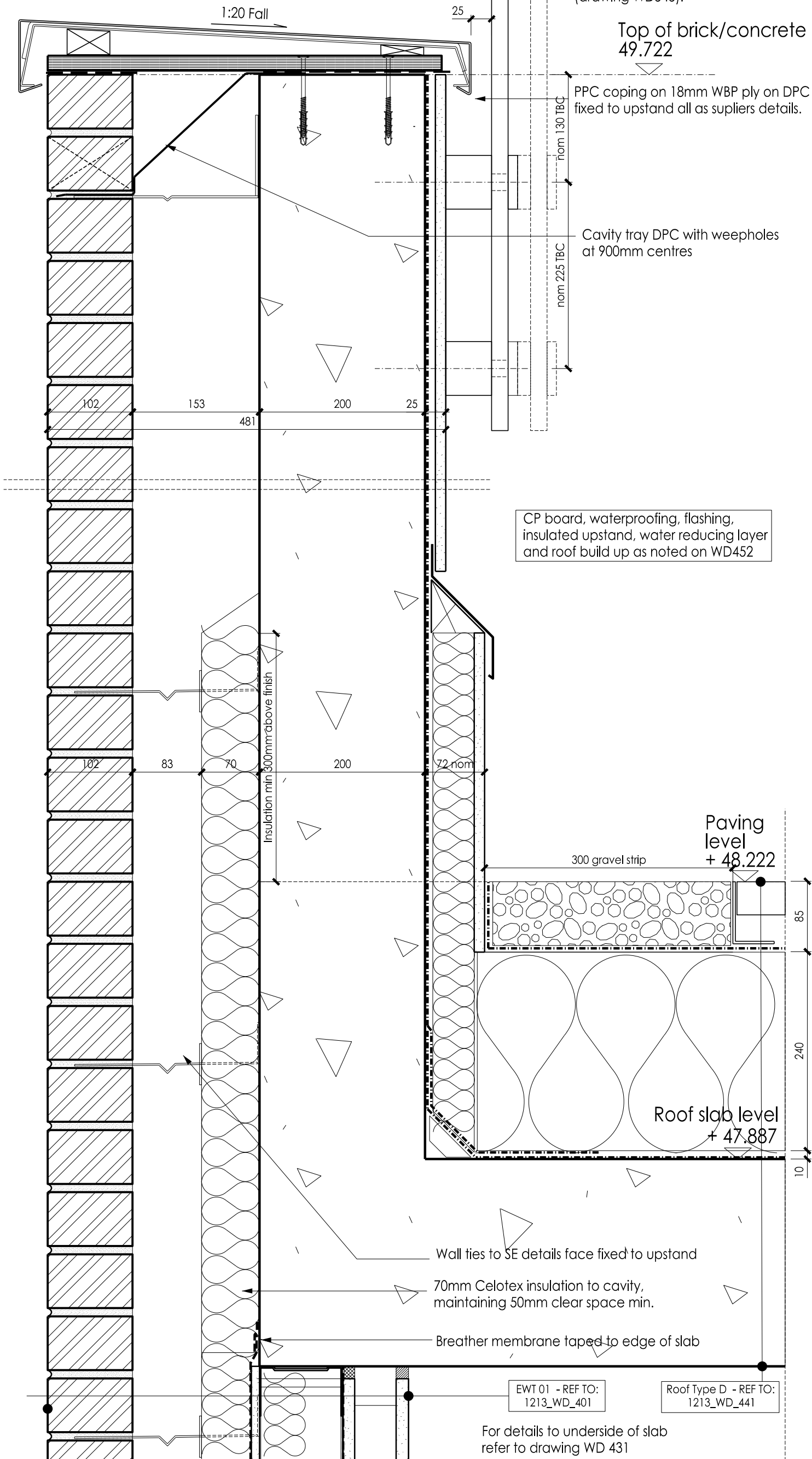
PPC coping on 18mm WBP ply on DPC fixed to upstand all as suppliers details.

Cavity tray DPC with weepholes at 900mm centres

CP board, waterproofing, flashing, insulated upstand, water reducing layer and roof build up as noted on WD452

**GENERAL NOTES**  
DO NOT SCALE FROM THIS DRAWING. FIGURED DIMENSIONS ARE TAKEN TO STRUCTURE UNLESS INDICATED OTHERWISE. ALL DIMENSIONS TO BE CHECKED ON SITE PRIOR TO COMMENCEMENT OF WORK. DRAWING TO BE READ IN CONJUNCTION WITH ALL OTHER ARCHITECTS DRAWINGS, CONSULTANTS AND SPECIALISTS DRAWINGS, CONSTRUCTION NOTES, SPECIFICATIONS AND EMPLOYER'S REQUIREMENTS WHERE APPLICABLE. ANY DISCREPANCY MUST BE BROUGHT TO THE ATTENTION OF PCKO. IF IN DOUBT, ASK. ANY MODIFICATION TO THIS DRAWING MUST BE CARRIED OUT BY PCKO. THIS DRAWING REMAINS UNDER THE COPYRIGHT OF PCKO ARCHITECTS LIMITED. PLEASE OBTAIN PERMISSION BEFORE COPYING. WHERE METHOD OF CONSTRUCTION INCORPORATES TIMBER/LIGHT GAUGE STEEL FRAME ALL ELEMENTS OF FRAME INCLUDING STUD LOCATIONS, NOGGINS, SHEATHING, UNTELS, TRUSSESS AND WIND BRACING TO BE TO FRAME MANUFACTURER'S DESIGN, DETAIL AND SPECIFICATION. ALL STRUCTURAL ELEMENTS ARE SHOWN INDICATIVELY. FOR ALL ELEMENTS OF STRUCTURE REFER TO STRUCTURAL ENGINEER'S AND SPECIALIST SUB-CONTRACTOR/FABRICATOR'S DESIGN, DETAIL AND SPECIFICATION. ALL MECHANICAL AND ELECTRICAL ELEMENTS ARE SHOWN INDICATIVELY. FOR ALL M&E INSTALLATIONS REFER TO BUILDING SERVICES ENGINEER'S AND SPECIALIST SUB-CONTRACTOR'S DESIGN, DETAIL AND SPECIFICATION.

Balustrade and fixing to comply with Building Regulations, (in particular Part K and Part N) and BS 6180:2001 'Barriers in and about Buildings'



DATE	REV.	DESCRIPTION	BY	CHECKED
10.03.17	A	Issued for Construction	RS	RS
27.02.17	/	KCL comments 17.01.17 incorporated. General note added	RS	RS

**PCKO**  
an HR company

5 - 8 HARDWICK STREET  
LONDON EC1R 4RG  
TEL: 020 - 7372 - 8918  
www.pcko.co.uk

ARCHITECTS INTERIOR DESIGNERS  
MASTER PLANNERS URBAN DESIGNERS

CLIENT	Kier Group		
PROJECT	Greenwood Centre		
DRAWING TITLE	Roof Parapet Type 2		
STATUS	CONSTRUCTION		
SCALE	1:5 @A3	DRAWN BY	RS
DATE	2016.12	CHECKED BY	PH
DRAWING NO.	1213_WD_453	REVISION	A

For details to underside of slab refer to drawing WD 431

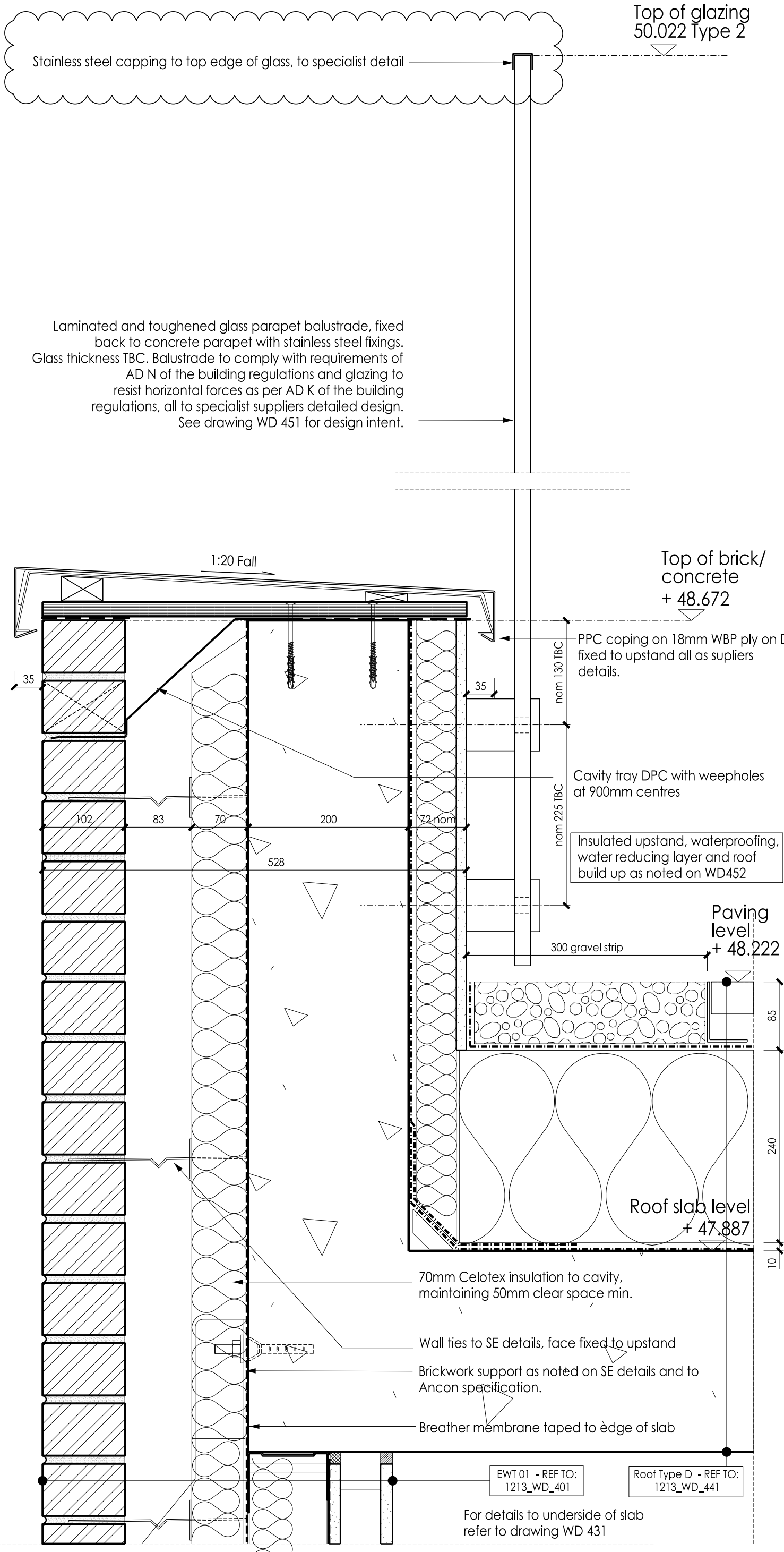
EWT 01 - REF TO:  
1213\_WD\_401

Roof Type D - REF TO:  
1213\_WD\_441

**GENERAL NOTES**

DO NOT SCALE FROM THIS DRAWING.  
 FIGURED DIMENSIONS ARE TAKEN TO STRUCTURE UNLESS INDICATED OTHERWISE.  
 ALL DIMENSIONS TO BE CHECKED ON SITE PRIOR TO COMMENCEMENT OF WORK.  
 DRAWING TO BE READ IN CONJUNCTION WITH ALL OTHER ARCHITECT'S DRAWINGS, CONSULTANTS AND SPECIALISTS DRAWINGS, CONSTRUCTION NOTES, SPECIFICATIONS AND EMPLOYER'S REQUIREMENTS WHERE APPLICABLE.  
 ANY DISCREPANCY MUST BE BROUGHT TO THE ATTENTION OF PCKO. IF IN DOUBT, ASK.  
 ANY MODIFICATION TO THIS DRAWING MUST BE CARRIED OUT BY PCKO.  
 THIS DRAWING REMAINS UNDER THE COPYRIGHT OF PCKO ARCHITECTS LIMITED. PLEASE OBTAIN PERMISSION BEFORE COPYING.  
 WHERE METHOD OF CONSTRUCTION INCORPORATES TIMBER/LIGHT GAUGE STEEL FRAME ALL ELEMENTS OF FRAME INCLUDING STUD LOCATIONS, NOGGINS, SHEATHING, UNITS, TRUSSESS AND WIND BRACING TO BE TO FRAME MANUFACTURER'S DESIGN, DETAIL AND SPECIFICATION.  
 ALL STRUCTURAL ELEMENTS ARE SHOWN INDICATIVELY. FOR ALL ELEMENTS OF STRUCTURE REFER TO STRUCTURAL ENGINEER'S AND SPECIALIST SUB-CONTRACTOR/FABRICATOR'S DESIGN, DETAIL AND SPECIFICATION.  
 ALL MECHANICAL AND ELECTRICAL ELEMENTS ARE SHOWN INDICATIVELY. FOR ALL M&E INSTALLATIONS REFER TO BUILDING SERVICES ENGINEER'S AND SPECIALIST SUB-CONTRACTOR'S DESIGN, DETAIL AND SPECIFICATION.

Balustrade and fixing to comply with Building Regulations, (in particular Part K and Part N) and BS 6180:2001 'Barriers in and about Buildings'



DATE	REV.	DESCRIPTION	BY	CHECKED
11.03.17	B	Capping to top edge of glass shown.	RS	RS
10.03.17	A	Issued for Construction	RS	RS
27.02.17	/	KCL comments 17.01.17 incorporated. General note added	RS	RS

**PCKO**  
 an HR company

5 - 8 HARDWICK STREET  
 LONDON EC1R 4RG  
 TEL: 020 - 7372 - 8918  
 www.pcko.co.uk

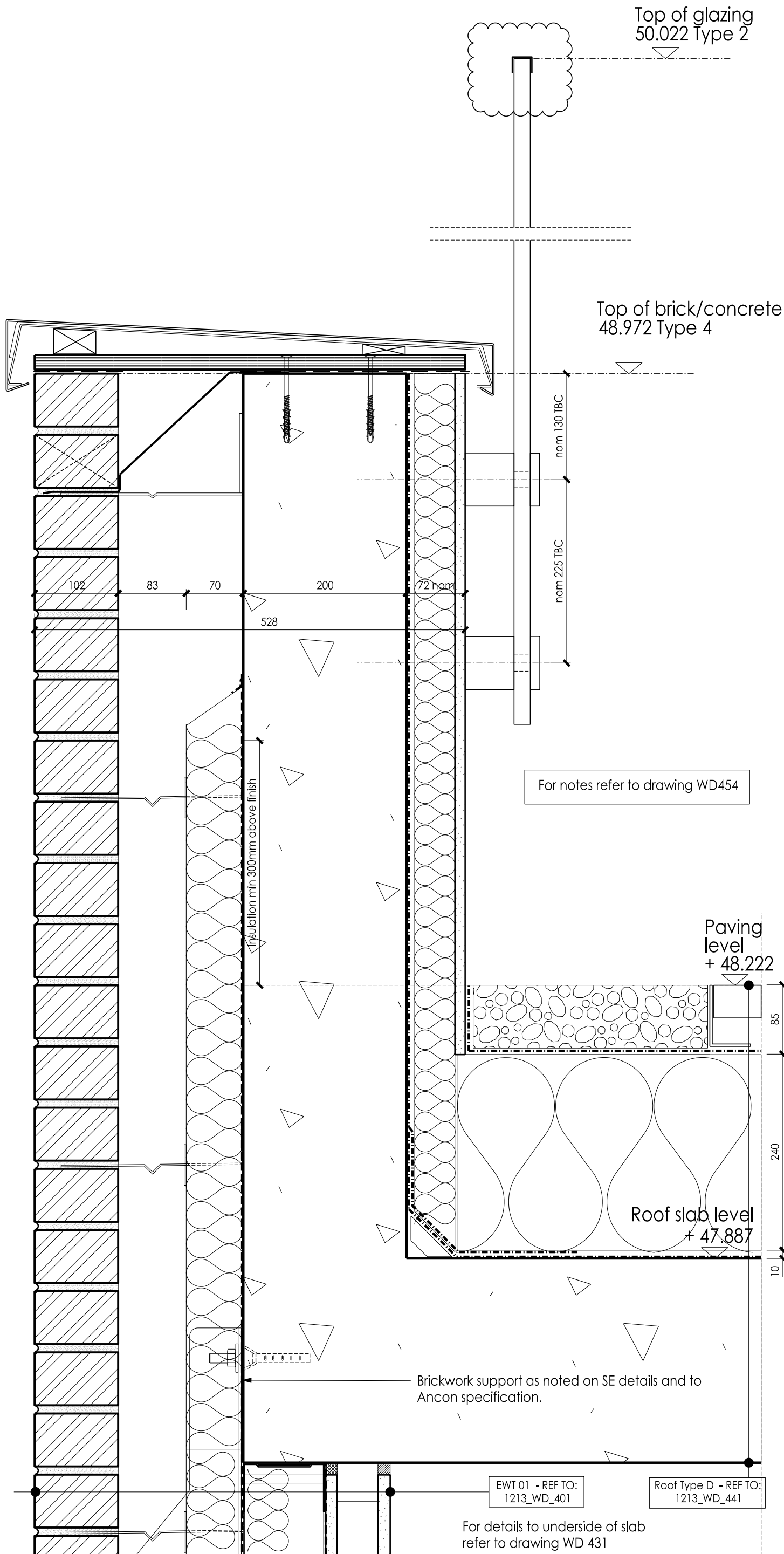
ARCHITECTS INTERIOR DESIGNERS  
 MASTER PLANNERS URBAN DESIGNERS

CLIENT		Kier Group	
PROJECT		Greenwood Centre	
DRAWING TITLE		Roof Parapet Type 3	
STATUS		CONSTRUCTION	
SCALE	1:5 @A3	DRAWN BY	RS
DATE	2016.12	CHECKED BY	PH
DRAWING NO.	1213_WD_454	REVISION	B

**GENERAL NOTES**

DO NOT SCALE FROM THIS DRAWING.  
 FIGURED DIMENSIONS ARE TAKEN TO STRUCTURE UNLESS INDICATED OTHERWISE.  
 ALL DIMENSIONS TO BE CHECKED ON SITE PRIOR TO COMMENCEMENT OF WORK.  
 DRAWING TO BE READ IN CONJUNCTION WITH ALL OTHER ARCHITECT'S DRAWINGS, CONSULTANTS AND SPECIALISTS DRAWINGS, CONSTRUCTION NOTES, SPECIFICATIONS AND EMPLOYER'S REQUIREMENTS WHERE APPLICABLE.  
 ANY DISCREPANCY MUST BE BROUGHT TO THE ATTENTION OF PCKO. IF IN DOUBT, ASK.  
 ANY MODIFICATION TO THIS DRAWING MUST BE CARRIED OUT BY PCKO.  
 THIS DRAWING REMAINS UNDER THE COPYRIGHT OF PCKO ARCHITECTS LIMITED. PLEASE OBTAIN PERMISSION BEFORE COPYING.  
 WHERE METHOD OF CONSTRUCTION INCORPORATES TIMBER/LIGHT GAUGE STEEL FRAME ALL ELEMENTS OF FRAME INCLUDING STUD LOCATIONS, NOGGINS, SHEATHING, UNITELS, TRUSSESS AND WIND BRACING TO BE TO FRAME MANUFACTURER'S DESIGN, DETAIL AND SPECIFICATION.  
 ALL STRUCTURAL ELEMENTS ARE SHOWN INDICATIVELY. FOR ALL ELEMENTS OF STRUCTURE REFER TO STRUCTURAL ENGINEER'S AND SPECIALIST SUB-CONTRACTOR/FABRICATOR'S DESIGN, DETAIL AND SPECIFICATION.  
 ALL MECHANICAL AND ELECTRICAL ELEMENTS ARE SHOWN INDICATIVELY. FOR ALL M&E INSTALLATIONS REFER TO BUILDING SERVICES ENGINEER'S AND SPECIALIST SUB-CONTRACTOR'S DESIGN, DETAIL AND SPECIFICATION.

Balustrade and fixing to comply with Building Regulations, (in particular Part K and Part N) and BS 6180:2001 'Barriers in and about Buildings'



DATE	REV.	DESCRIPTION	BY	CHECKED
11.03.17	B	Capping to top edge of glass shown.	RS	RS
10.03.17	A	Issued for Construction	RS	RS
27.02.17	/	General note added	RS	RS

**PCKO**  
 an HR company

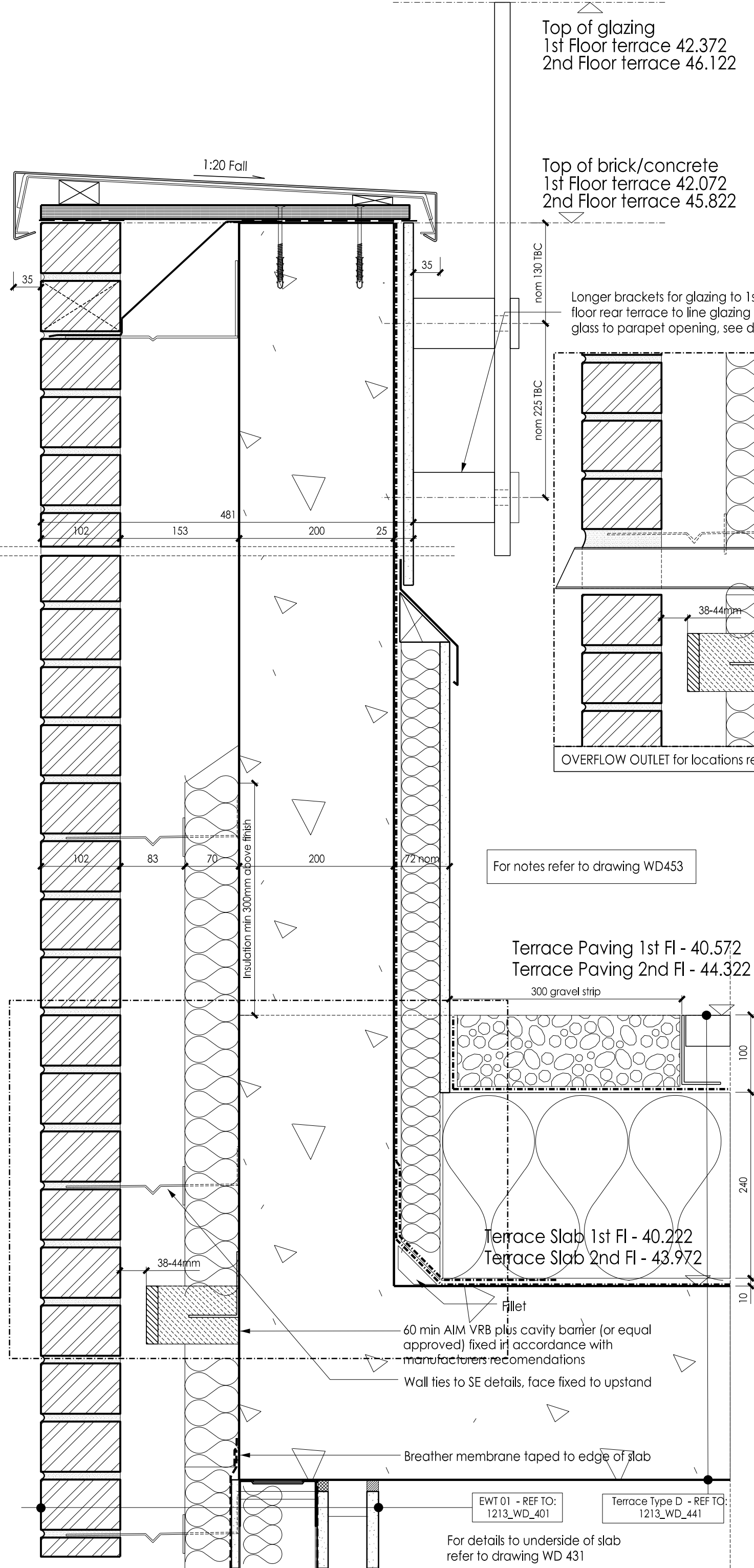
5 - 8 HARDWICK STREET  
 LONDON EC1R 4RG  
 TEL: 020 - 7372 - 8918  
 www.pcko.co.uk

ARCHITECTS INTERIOR DESIGNERS  
 MASTER PLANNERS URBAN DESIGNERS

CLIENT	Kier Group		
PROJECT	Greenwood Centre		
DRAWING TITLE	Roof Parapet Type 4		
STATUS	CONSTRUCTION		
SCALE	1:5 @A3	DRAWN BY	RS
DATE	2016.12	CHECKED BY	PH
DRAWING NO.	1213_WD_455	REVISION	B

**GENERAL NOTES**  
 DO NOT SCALE FROM THIS DRAWING.  
 FIGURED DIMENSIONS ARE TAKEN TO STRUCTURE UNLESS INDICATED OTHERWISE.  
 ALL DIMENSIONS TO BE CHECKED ON SITE PRIOR TO COMMENCEMENT OF WORK.  
 DRAWING TO BE READ IN CONJUNCTION WITH ALL OTHER ARCHITECTS DRAWINGS, CONSULTANTS AND SPECIALISTS DRAWINGS, CONSTRUCTION NOTES, SPECIFICATIONS AND EMPLOYER'S REQUIREMENTS WHERE APPLICABLE.  
 ANY DISCREPANCY MUST BE BROUGHT TO THE ATTENTION OF PCKO. IF IN DOUBT, ASK.  
 ANY MODIFICATION TO THIS DRAWING MUST BE CARRIED OUT BY PCKO.  
 THIS DRAWING REMAINS UNDER THE COPYRIGHT OF PCKO ARCHITECTS LIMITED. PLEASE OBTAIN PERMISSION BEFORE COPYING.  
 WHERE METHOD OF CONSTRUCTION INCORPORATES TIMBER/LIGHT GAUGE STEEL FRAME ALL ELEMENTS OF FRAME INCLUDING STUD LOCATIONS, NOGGINS, SHEATHING, UNITS, TRUSSESS AND WIND BRACING TO BE TO FRAME MANUFACTURER'S DESIGN, DETAIL AND SPECIFICATION.  
 ALL STRUCTURAL ELEMENTS ARE SHOWN INDICATIVELY. FOR ALL ELEMENTS OF STRUCTURE REFER TO STRUCTURAL ENGINEER'S AND SPECIALIST SUB-CONTRACTOR/FABRICATOR'S DESIGN, DETAIL AND SPECIFICATION.  
 ALL MECHANICAL AND ELECTRICAL ELEMENTS ARE SHOWN INDICATIVELY. FOR ALL M&E INSTALLATIONS REFER TO BUILDING SERVICES ENGINEER'S AND SPECIALIST SUB-CONTRACTOR'S DESIGN, DETAIL AND SPECIFICATION.

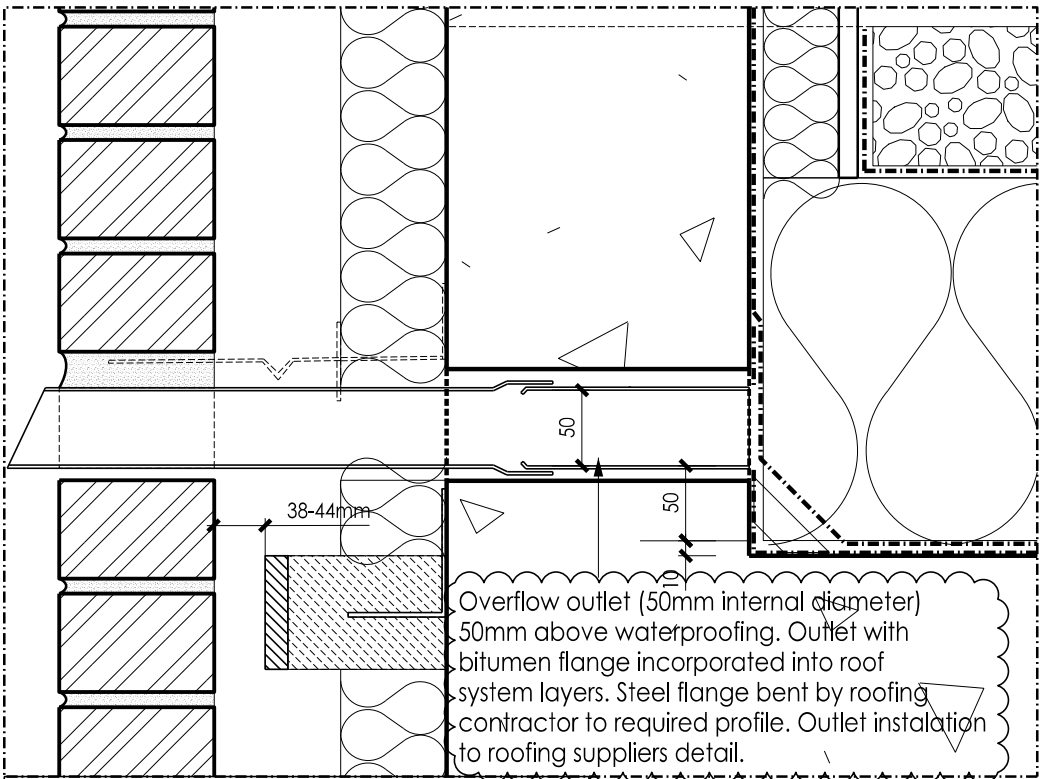
Balustrade and fixing to comply with Building Regulations, (in particular Part K and Part N) and BS 6180:2001 'Barriers in and about Buildings'



Top of glazing  
 1st Floor terrace 42.372  
 2nd Floor terrace 46.122

Top of brick/concrete  
 1st Floor terrace 42.072  
 2nd Floor terrace 45.822

Longer brackets for glazing to 1st floor rear terrace to line glazing with glass to parapet opening, see detail ...



Overflow outlet (50mm internal diameter) 50mm above waterproofing. Outlet with bitumen flange incorporated into roof system layers. Steel flange bent by roofing contractor to required profile. Outlet installation to roofing suppliers detail.

OVERFLOW OUTLET for locations refer to GA plans

For notes refer to drawing WD453

Terrace Paving 1st Fl - 40.572  
 Terrace Paving 2nd Fl - 44.322

Terrace Slab 1st Fl - 40.222  
 Terrace Slab 2nd Fl - 43.972

DATE	REV.	DESCRIPTION	BY	CHECKED
24.03.17	B	Annotation shown in full.	AL	PH
10.03.17	A	Overflow detail added. Issued for Construction	RS	RS
27.02.17	/	KCL comments 17.01.17 incorporated. General note added	RS	RS

**PCKO**  
 an HR company  
 5 - 8 HARDWICK STREET  
 LONDON EC1R 4RG  
 TEL: 020 - 7372 - 8918  
 www.pcko.co.uk

ARCHITECTS INTERIOR DESIGNERS  
 MASTER PLANNERS URBAN DESIGNERS

CLIENT	Kier Group		
PROJECT	Greenwood Centre		
DRAWING TITLE	Terrace Parapet Type 2		
STATUS	CONSTRUCTION		
SCALE	1:5 @A3	DRAWN BY	RS
DATE	2016.12	CHECKED BY	PH
DRAWING NO.	1213_WD_457	REVISION	B

EWT 01 - REF TO: 1213\_WD\_401  
 Terrace Type D - REF TO: 1213\_WD\_441

For details to underside of slab refer to drawing WD 431