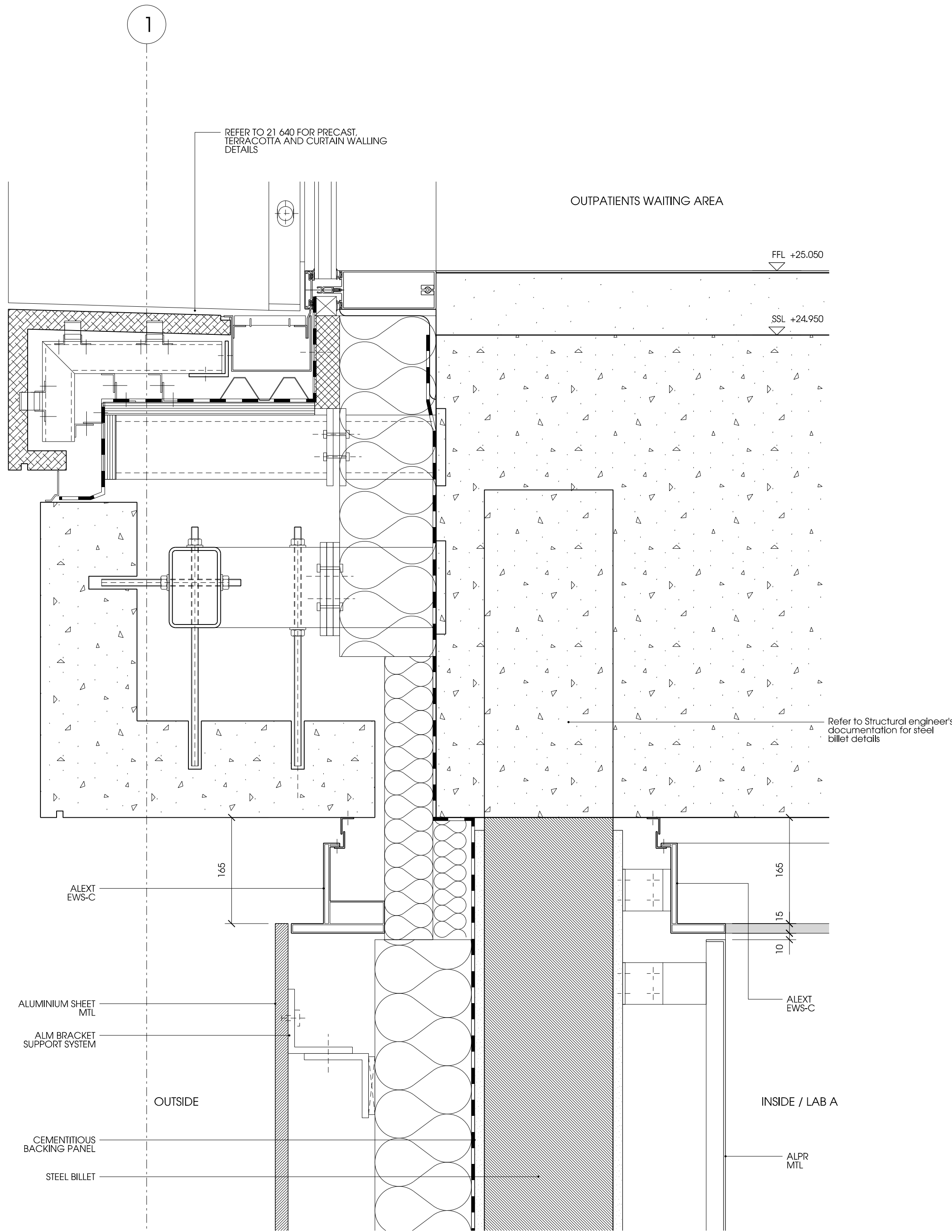
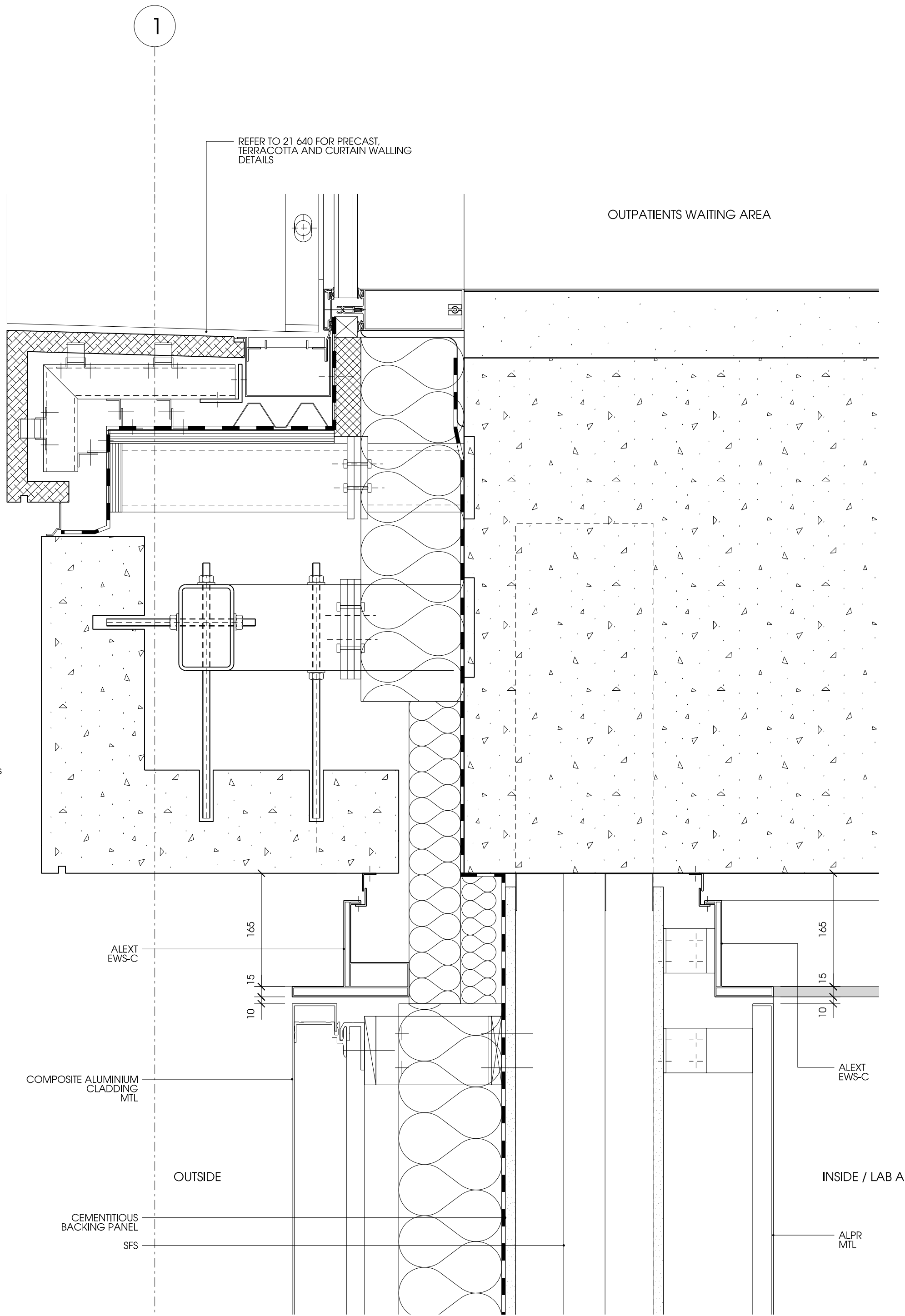


01 External 3d View
21_644 North - west corner



02 Detail section through metal cladding
21_644 North-west corner / Ground floor



03 Detail section through metal rainscreen
21_644 North-west corner / Ground floor

Notes

Contractor to check all dimensions on site. Do not scale from this drawing. Stanton Williams to be advised of any variation between the drawings and site conditions.

© Stanton Williams. All rights described in Chapter IV of the Copyright, Designers and Patents Act 1998 have been asserted.

To be read in conjunction with the specification and all relevant drawings.

Materials Key

ALEXT Aluminium extrusion
ALPR Aluminium pressing
BAL-01 Balustrade to L2 terrace
BR-01 Fair faced brickwork (F10/110)
BR-02 Running course brickwork (F10/112)
BR-03 English bond brickwork (F10/115)
DR-01 Main entrance doors (H11/200)
DR-02 Louvered hinged doors to substation (H31/140)
DR-04 Automated bi-fold metal doors (L20/150)
EWS-A Curtain walling, north (H11/110)
EWS-B Curtain walling in brickwork (H11/120)
EWS-C Structural glazing, Ground Floor (H11/130)
EWS-D Structural glazing/doors, Outpatient's terrace (H11/140)
EWS-E Curtain walling, GMP north and south (H11/150)
EWS-F Metal panel cladding, GMP east and west (H31/112)

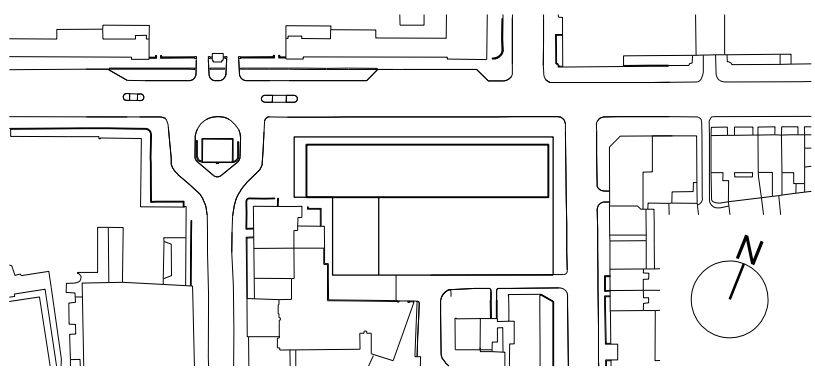
EWS-G Flush curtain walling, Outpatients north (H11/160)
EWS-H Flush glazing in brickwork (H11/170)
LSF Lightweight steel framing (G10/140)
LVR-01 Weather-proof louvered metal screens (H31/142)
LVR-02 External plant room louvres (H31/145)
LVR-03 Enclosed plant room louvres (H31/148)
MTL Metal facade panels, integrated doors/louvres (H31/110)
PR-C Precast concrete cladding (H40/110)
RFL-01 Main atrium rooflight (H10/110)
RFL-02 Outpatient's rooflight (H10/120)
TR-01 Terracotta cladding piers (H55/110)
TR-02 Terracotta coping (H55/120)
TR-03 Terracotta cladding, flat panels (H55/130)
TR-04 Terracotta cills (H55/140)
Movement joint (F30/610)

Revision

PO 14.07.17 Planning Issue

Description

Location



Stanton Williams
36 Graham Street
London N1 8GJ
Phone +44 (0)20 7880 6400
Email 464@stantonwilliams.com
www.stantonwilliams.com

STANTON
WILLIAMS

Project

Zayed Centre for Research
into Rare Disease in Children

Drawing Title

External wall
Section details
North - West corner
Ground Floor Detail

Date

23.09.2015

Scale @ A1(A3)

1:5 (1:10)

Status

Planning

Drawn

EM

Checked

KI

Approved

GH

Project No.

464

Drawing No.

21_644

Revision

P0