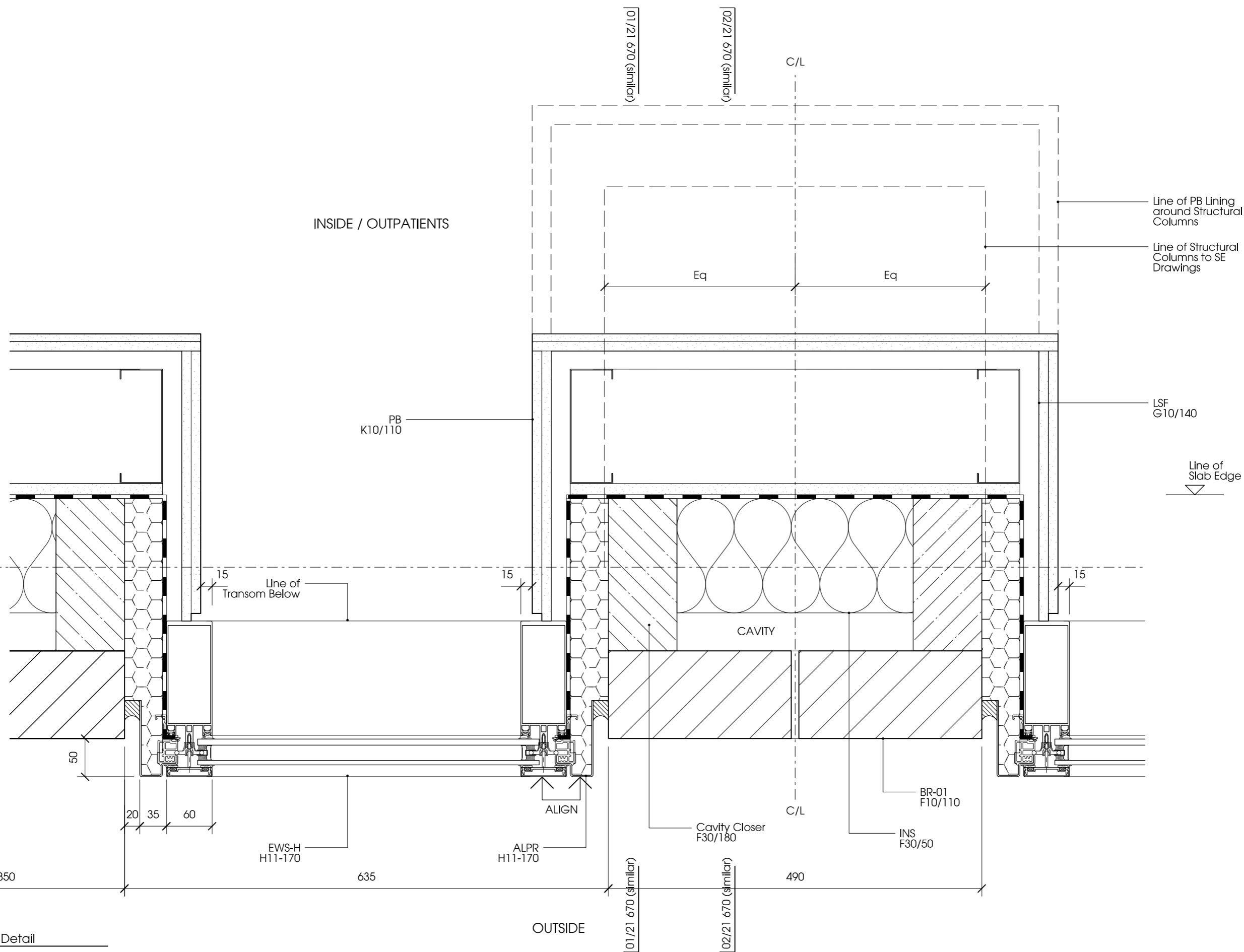


9

F



01 Outpatients Flush Glazing Detail
21_308 Refer to drawing 00_311

Notes

Contractor to check all dimensions on site. Do not scale from this drawing. Stanton Williams to be advised of any variation between the drawings and site conditions.

© Stanton Williams. All rights described in Chapter IV of the Copyright, Designers and Patents Act 1998 have been asserted.

To be read in conjunction with the specification and all relevant drawings.

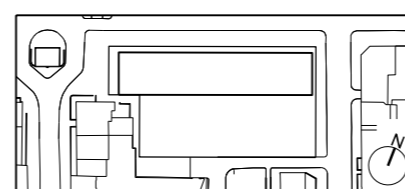
Materials Key

- ALEXT Aluminium extrusion
- ALPR Aluminium pressing
- BAL-01 Balustrade to L2 terrace
- BR-01 Fair faced brickwork (F10/110)
- BR-02 Running course brickwork (F10/112)
- DR-01 Main entrance doors (H11/200)
- DR-02 Louvered hinged doors to substation (H31/140)
- DR-04 Automatic 4-fold metal doors (L20/150)
- EWS-A Curtain walling, north (H11/110)
- EWS-B Curtain walling in brickwork (H11/120)
- EWS-C Structural glazing, Ground Floor (H11/130)
- EWS-D Structural glazing/doors, Outpatients terrace (H11/140)
- EWS-E Curtain walling, GMP north and south (H11/150)
- EWS-F Metal panel cladding, GMP east and west (H31/112)

- EWS-G Flush curtain walling, Outpatients north (H11/160)
- EWS-H Flush glazing in brickwork (H11/170)
- LSF Lightweight steel framing (G10/140)
- LVR-01 Weather-proof louvered metal screens (H31/142)
- LVR-02 External plant room louvres (H31/145)
- MTL Metal facade panels, integrated doors/louvres (H31/110)
- PR-C Precast concrete cladding (H42/110)
- RFL-01 Main atrium rooflight (H10/110)
- RFL-02 Outpatients rooflight (H10/120)
- TR-01 Terracotta cladding piers (H55/110)
- TR-02 Terracotta coping (H55/130)
- TR-03 Terracotta cladding, flat panels (H55/130)
- TR-04 Terracotta cills (H55/140)
- Movement joint (F30/610)

Revision	Date	Description
PO	14.07.17	Planning Issue

Location



Stanton Williams
36 Graham Street
London N1 6GU
Phone +44 (0)20 7880 6400
Email 464@stantonwilliams.com
www.stantonwilliams.com



Project
Centre for Research into Rare Disease in Children
at Great Ormond Street Hospital

Drawing Title
External Wall
Plan Details
Ground Floor
Outpatients Flush Glazing Detail

Date	Scale @ A3	Status	Project No.	Drawing No.	Revision
06/02/2015	1:5	Planning	464	21_307	PO
Drawn	Checked	Approved			
LO	KI	GH			