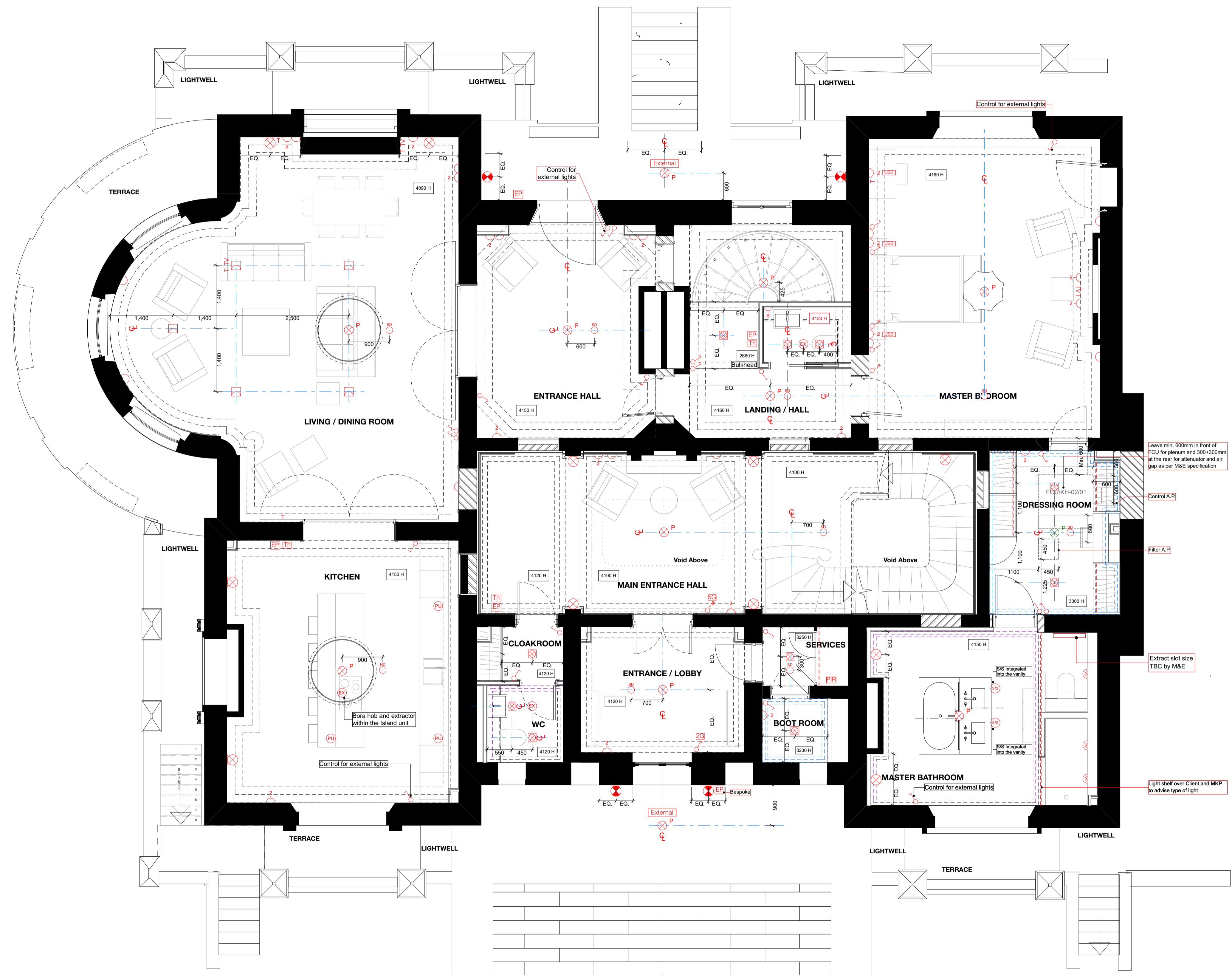
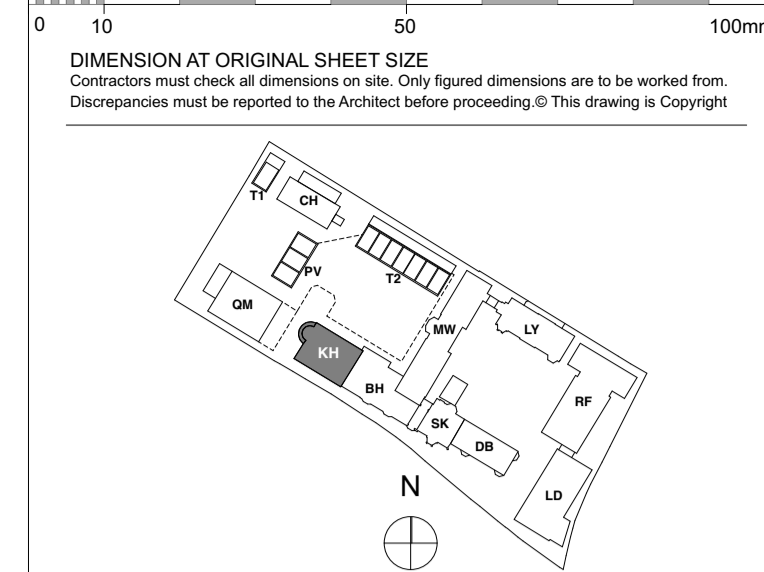


NOTE
 Refer to MKP drawings for Utility cupboard, kitchen and electrical layouts.
 For further Entry Equipment Please Refer to MKP Drawings.
Pendant Lights & Pendant Wiring position shown on RCP Plans. Wired connection point for possible future pendant with associated patressing. Separate switch for each Pendant.
 Structural requirements for patress TBC by SE.
 Wiring for speaker system in Living, Dining, kitchen and Master Bedroom, for future installation of speakers by customer.
 Wiring and connection point to All glazing for electrical Curtains/Blind System.
Dimable Lights - in Living/dining and Master Bedroom.
Automated Lights - in Utility/Coat cupboards, LED Lights to all wardrobes.
Kitchen Manufacture to provide setting out of all sockets and fittings within cabinets as required. Pop up sockets in kitchens
Bathroom layouts shown indicatively only
 Refer to Detailed Bathroom Layouts drawings.



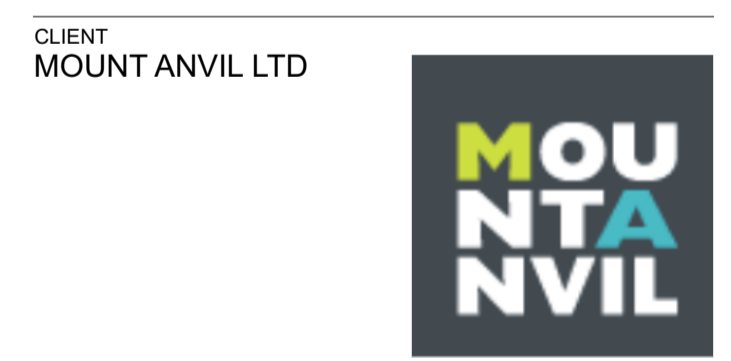
LEGEND

Lighting & Fire Alarm	
Switch	Heat detector
2 way switch	Extractor
3 way switch	Air supply in
Switch dimmer	Linear slot diffuser for supply & extract air
Pendant light	Emergency Light
Pendant Wiring	Fire Detector
Modular luminaire	Fire Detector Sounder base & Bashing beacon
Linear Luminaire	Thermostatic Sensor
Single downlights	Pop-up Socket and USB Port
Double directional downlights	Access Panel
Wall light, internal	Surface Mounted LED Circular Luminaire
Recessed low energy LED downlighter	LED strip lighting to wardrobes & under wall units
LED strip lighting to wardrobes & under wall units	Wall light, external
Wall light, external	Recessed wall lights at floor level
Single socket	Wall light
Double socket	Recessed uplighter
Switch socket	Deck Mounted Light
Lockable single cleaners socket	
Passive Infrared Sensor	
Shaver socket	
Video entryphone and intercom	
TV media plate. Refer to M&E specification	
BT phone & data point	
Floor recessed outlet	
Smoke detector	

Ceiling Info.	
Ceiling Recess	
Existing Cornice	
Proposed Cornice to match existing	
New Cornice	
Cornice segment to be removed	

FOR CONSTRUCTION

REVISION	DRN	CHKD	DATE
C1 Issued for Construction	NV	TW	17/01/2017
C2 Amended as Detailed	NV	KG	03/02/2017
C3 RCPs reviewed following client's comments in workshop coordination 17.04.07	GC	TW	12/04/2017



CLIENT
 MOUNT ANVIL LTD

PROJECT
 KIDDERPORE AVENUE

DRAWING
 Kidderpore Hall
 Level UG RCP

SCALE 1:50 @ A1 DATE April 2017

DRAWING No. 15 230 DRAWN BY NV
 9000-DRG-23KH-UG030 REV
 C3

A & Q PARTNERSHIP (LONDON) LTD
 THE LUX BUILDING, 2-4 HOXTON SQUARE, LONDON N1 6 NU
 Tel: 020 7613 2244 Fax: 020 7613 2642 Email: london@aqp.co.uk
 ARCHITECTURE DESIGN MASTERPLANNING INTERIORS