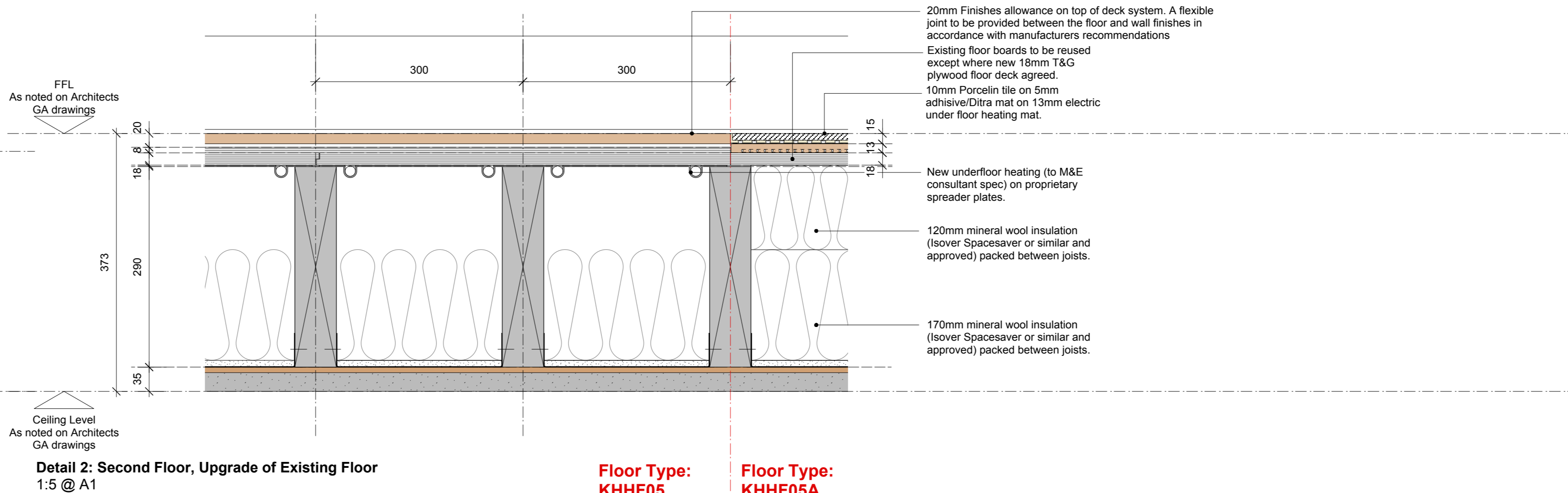
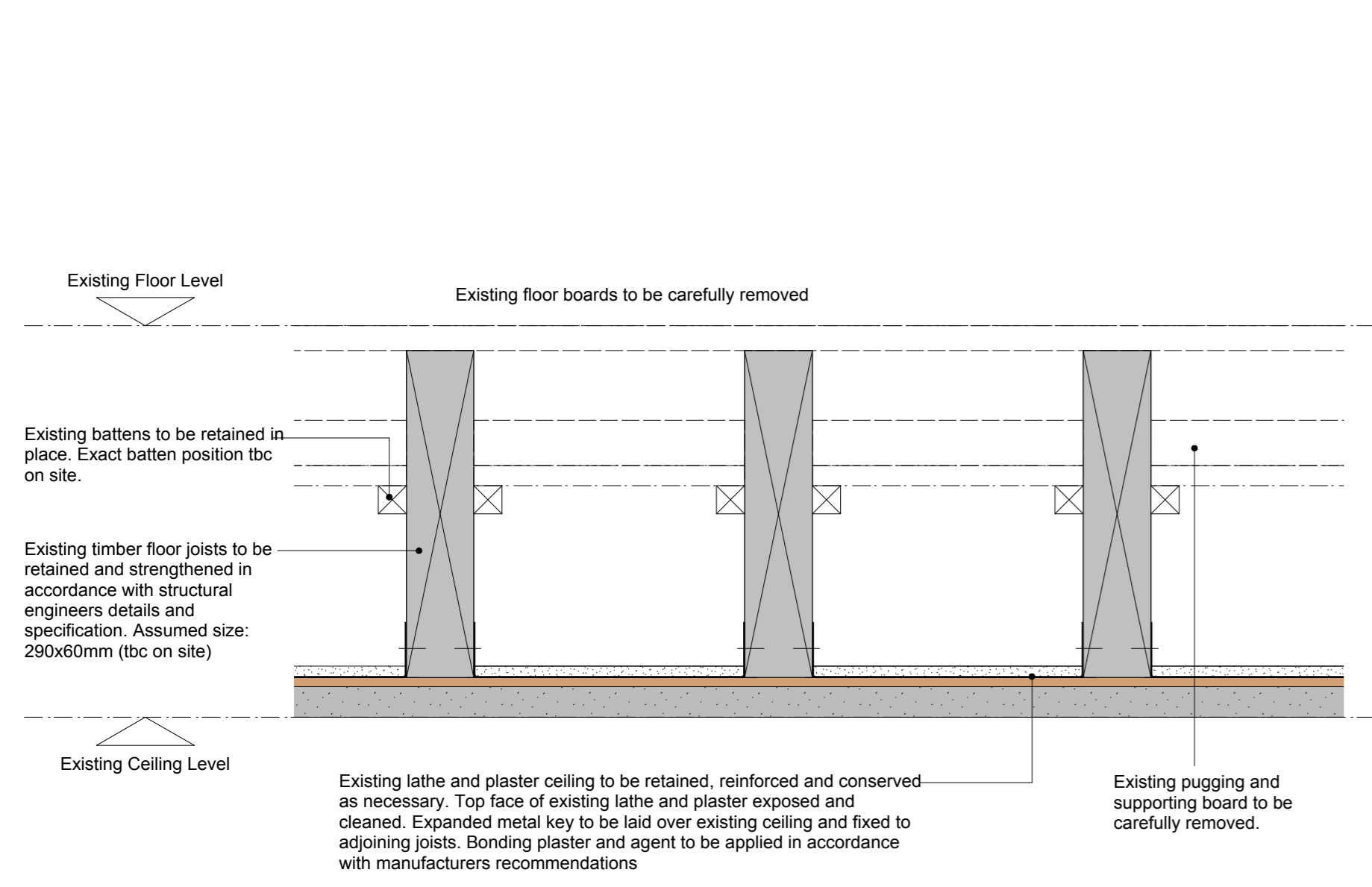


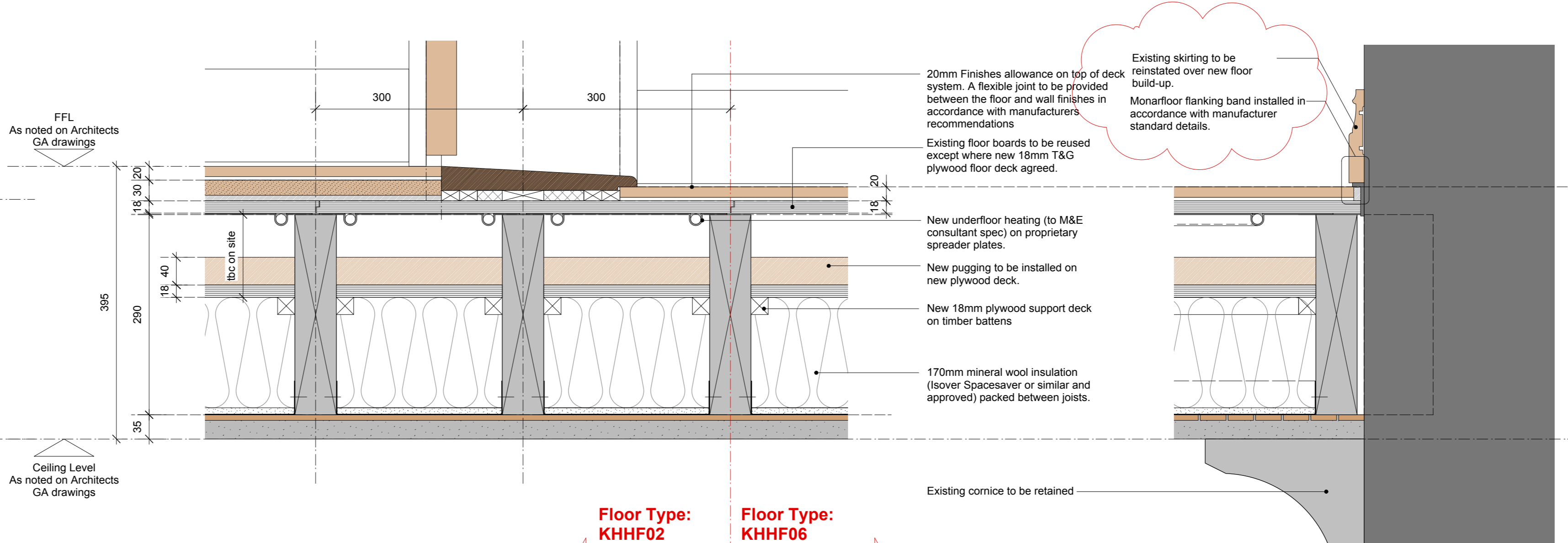
Detail 1: Second Floor, Preparation of Existing Floor
1:5 @ A1
SECOND NON-SEPARATING FLOOR FLOOR BUILD UP



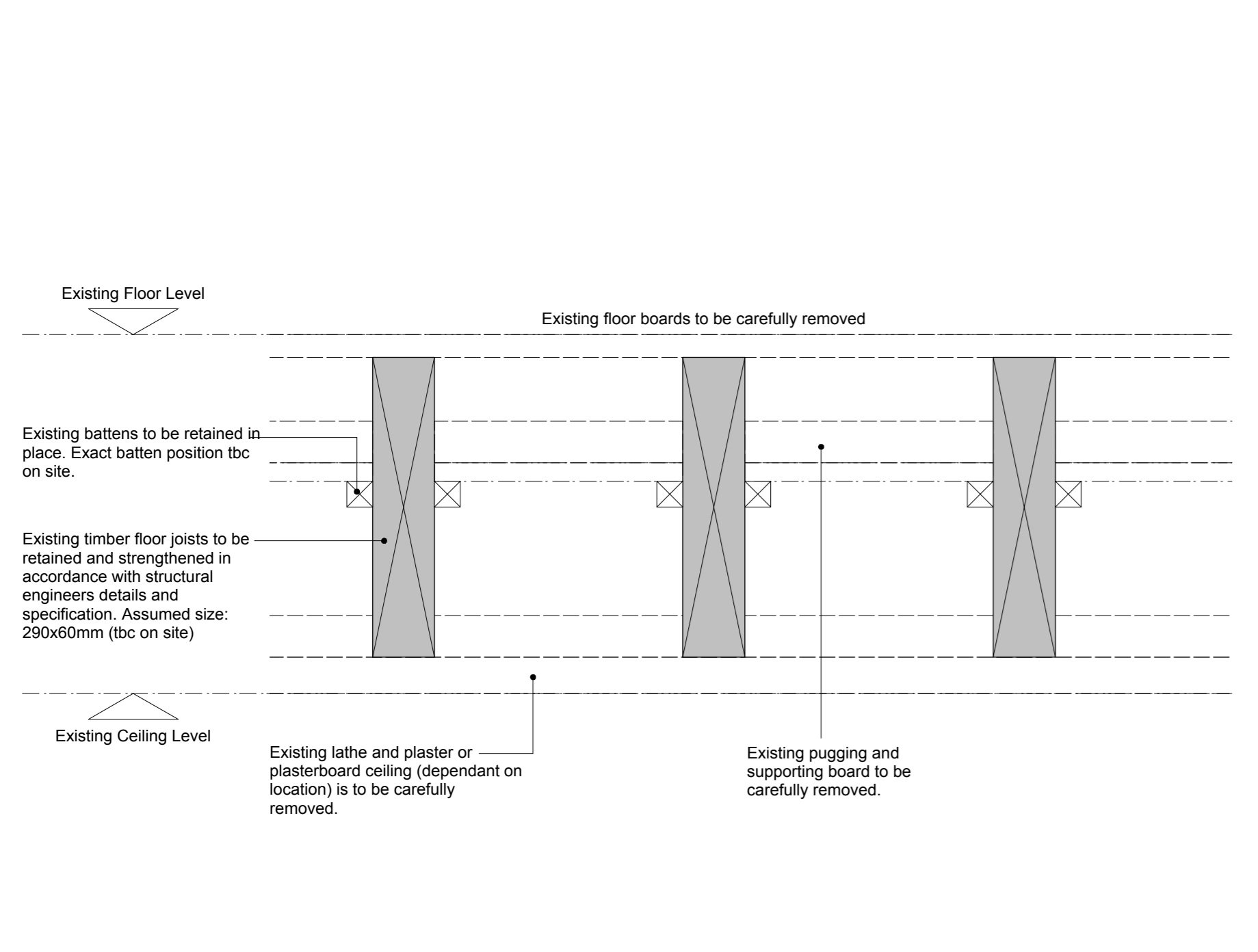
Detail 2: Second Floor, Upgrade of Existing Floor
1:5 @ A1
Floor Type: KHHF05
Floor Type: KHHF05A



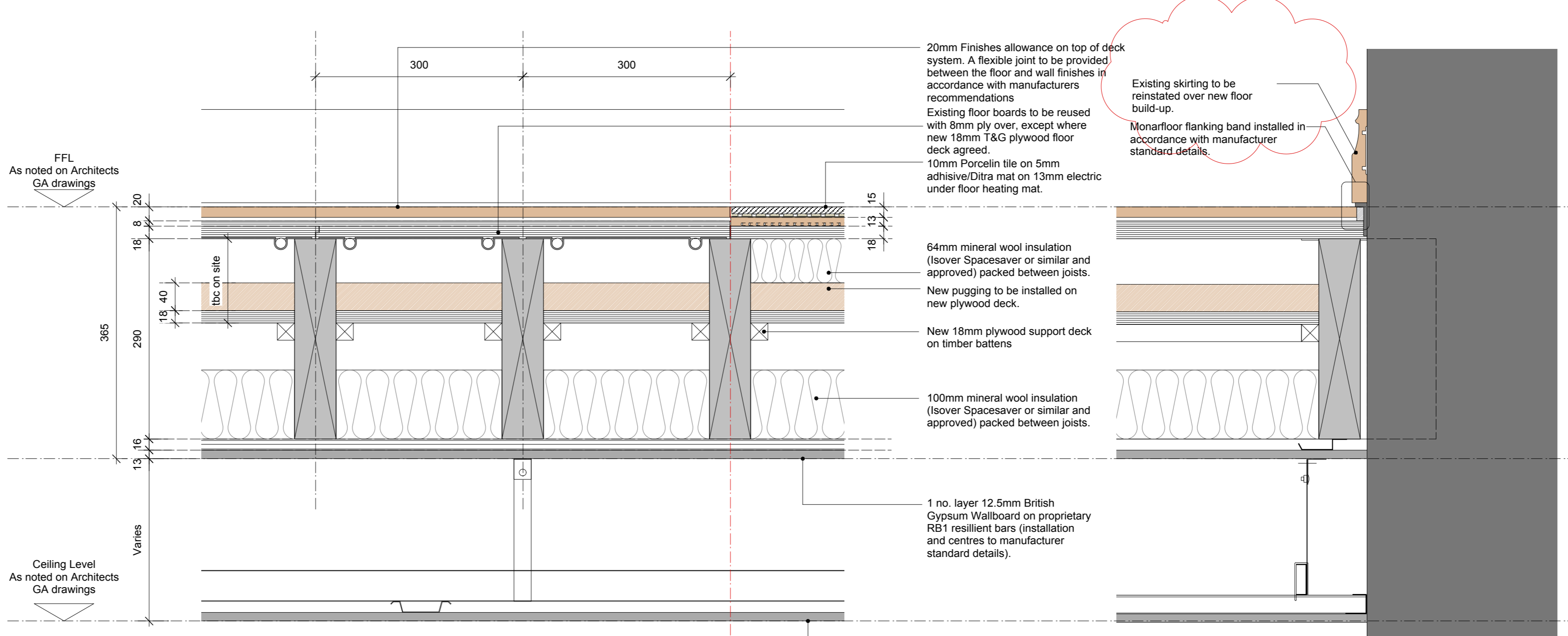
Detail 3: First Floor, Preparation of Existing Floor
1:5 @ A1
FIRST NON-SEPARATING FLOOR FLOOR BUILD UP



Detail 4: First Floor, Upgrade of Existing Floor
1:5 @ A1
Floor Type: KHHF02
Floor Type: KHHF06



Detail 5: Ground Floor, Preparation of Existing Floor
1:5 @ A1
GROUND NON-SEPARATING FLOOR FLOOR BUILD UP



Detail 6: Ground Floor, Upgrade of Existing Floor
1:5 @ A1
Floor Type: KHHF04
Floor Type: KHHF04A

DIMENSION AT ORIGINAL SHEET SIZE
Contractors must check all dimensions on site. Only figured dimensions are to be worked from. Discrepancies must be reported to the Architect before proceeding. © This Drawing is Copyright

Notes:

1. ALL existing constructions, structure, build ups etc. are to be confirmed on site PRIOR to proceeding with the work.
2. This drawing is to be read in conjunction with all relevant Architect GA drawings and specifications.
3. This drawing is to be read in conjunction with all relevant drawings and specifications produced by the structural engineer and M&E consultant.
4. This drawing is to be read in conjunction with the relevant fabric survey produced by ESG.
5. This drawing is to be read in conjunction with the relevant condition investigation report produced by Hutton & Rostron.

ALL DETAILS TO BE APPROVED BY ACOUSTICIAN PRIOR TO INSTALLATION.

FOR CONSTRUCTION

REVISION	DRN	CHKD	DATE
C1 First Issue	TW	KC	17.01.17
C2 Existing Floor Boards retained	KC	AQP	20.04.17
C3 Existing Skirting retained	KcC	KC	03.07.17

A&Q PARTNERSHIP

CLIENT: MOUNT ANVIL LTD

PROJECT: KIDDERPORE AVENUE

DRAWING: Kidderpore Hall Non-Separating Floor Details

SCALE: 1:5 @ A1 DATE: Nov 2016

DRAWING No. 15 230 DRAWN BY: TW

9000-DRG-00KH-DE005 REVISION: C3

A & Q PARTNERSHIP (LONDON) LTD
THE LUX BUILDING, 2-4 HOXTON SQUARE, LONDON N1 6 NU
Tel: 020 7613 2244 Fax: 020 7613 2642 Email: london@aqp.co.uk
ARCHITECTURE DESIGN MASTERPLANNING INTERIORS