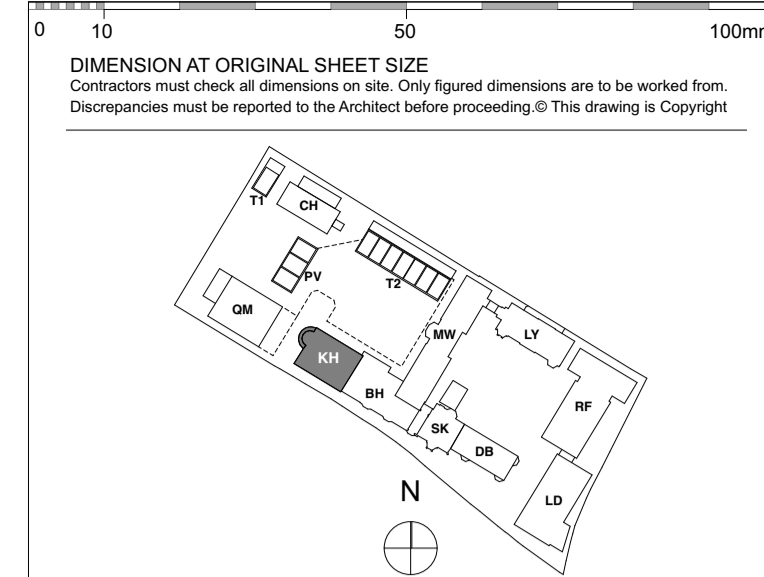


**NOTE**  
 Refer to MKP drawings for Utility cupboard, kitchen and electrical layouts.  
 For further Entry Equipment Please Refer to MKP Drawings.  
**Pendant Lights & Pendant Wiring position shown on RCP Plans:** Wired connection point for possible future pendant with associated patressing. Separate switch for each Pendant.  
 Structural requirements for patress TBC by SE.  
 Wiring for speaker system in Living, Dining, kitchen and Master Bedroom, for future installation of speakers by customer.  
 Wiring and connection point to All glazing for electrical Curtains/ Blind System.  
**Dimable Lights** - in Living/dining and Master Bedroom.  
**Automated Lights** - in Utility/Coat cupboards, LED Lights to all wardrobes.  
**Kitchen Manufacture** to provide setting out of all sockets and fittings within cabinets as required. Pop up sockets in kitchens  
**Bathroom layouts** shown indicatively only  
 Refer to Detailed Bathroom Layouts drawings.



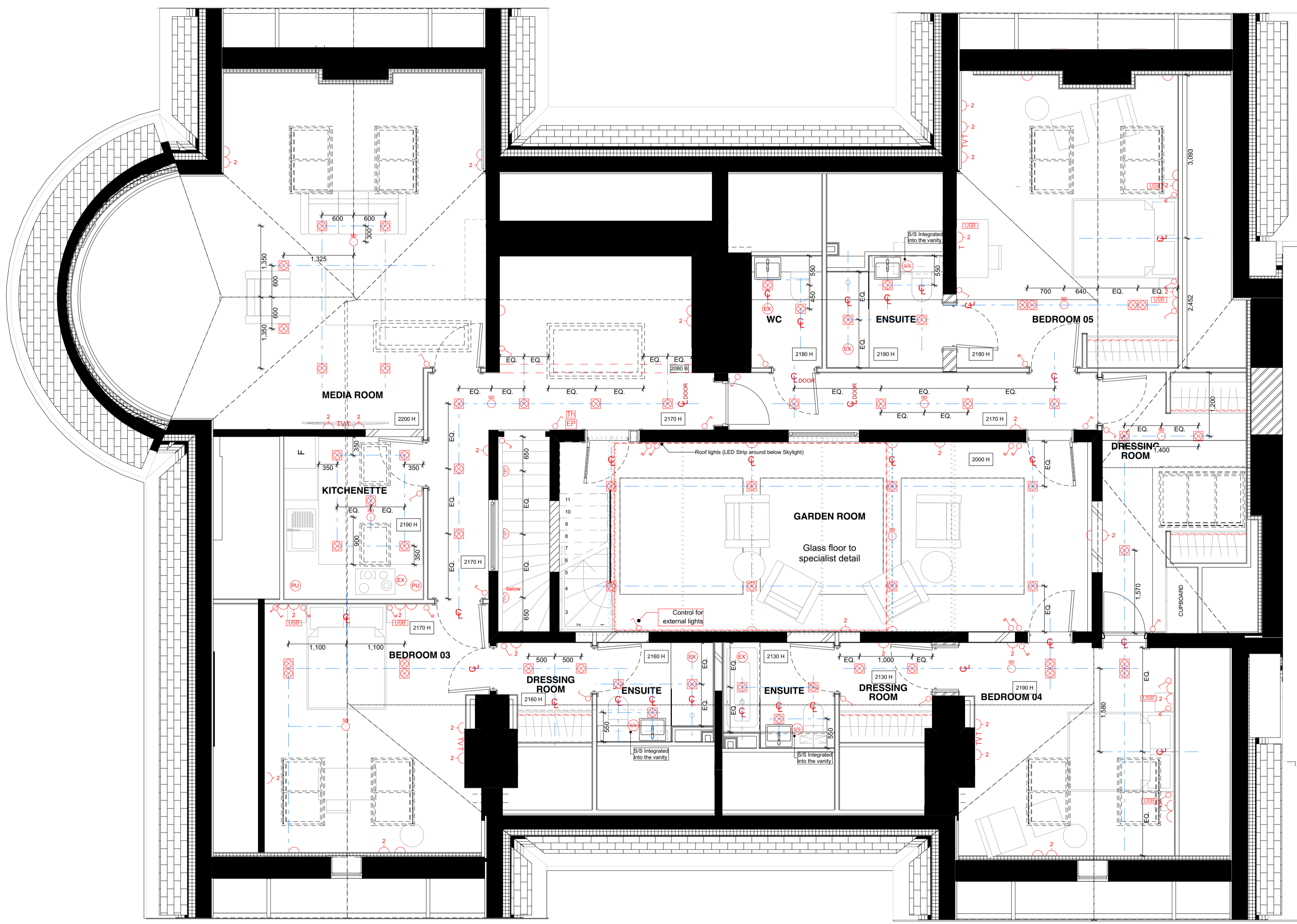
**LEGEND**

**Lighting & Fire Alarm**

- Switch
- 2 way switch
- 3 way switch
- Switch dimmer
- Pendant light
- Pendant Wiring
- Modular luminaire
- Linear Luminaire
- Single downlights
- Double directional downlights
- Wall light, internal
- Recessed low energy LED downlighter
- LED strip lighting to wardrobes & under wall units
- Wall light, external
- Recessed wall lights at floor level
- Wall light
- Single socket
- Double socket
- Shamp switch sockets for lamp circuit
- Lockable single cleaners socket
- PIR Passive Infrared Sensor
- Shaver socket
- Video entryphone and intercom
- TV media plate. Refer to M&E specification
- BT phone & data point
- Floor recessed outlet
- Smoke detector
- Heat detector
- Extractor
- Air supply in
- Linear slot diffuser for supply & extract air
- Emergency Light
- Fire Detector
- Fire Detector Sounder base & flashing beacon
- Manual Fire alarm call point
- Thermostatic Sensor
- Access Panel
- Size Varies
- Surface Mounted LED Circular Luminaire
- Fib Access
- Speakers
- Recessed uplighter
- Deck Mounted Light

**Ceiling Info.**

- Ceiling Recess
- Existing Cornice
- Proposed Cornice to match existing
- New Cornice
- Cornice segment to be removed



**FOR CONSTRUCTION**

REVISION	DRN	CHKD	DATE
C1 Issued for Construction	NV	TW	17/01/2017
C2 RCPs revised following client's comments in workshop coordination 17.04.07	GC	TW	12/04/2017



CLIENT  
 MOUNT ANVIL LTD

PROJECT  
 KIDDERPORE AVENUE

DRAWING  
 Kidderpore Hall  
 Level 02 RCP

SCALE 1:50 @ A1 DATE April 2017

DRAWING No. 15 230 DRAWN BY NV  
 9000-DRG-23KH-02030 REV C2

A & Q PARTNERSHIP (LONDON) LTD  
 THE LUX BUILDING, 2-4 HOXTON SQUARE, LONDON N1 6 NU  
 Tel: 020 7613 2244 Fax: 020 7613 2642 Email: london@aqp.co.uk  
 ARCHITECTURE DESIGN MASTERPLANNING INTERIORS