

Roof Finishes Key:

Biodiverse / brown roof:

Planting as Bauder Plug plants to cover 30% of the area initially, and installed at 20 plants/m<sup>2</sup> (25 in areas subject to wind erosion), species as per ER's & Landscape Architect's requirements see table right. Planting on top of boulder insulation and green roof build up, refer to NBS Q37/130A and section DD-155

Pebble border/ Gravel surfacing beneath PV panels:

Border - Min 500mm wide vegetation barrier of washed pebbles

PVs - Required for fire prevention. Must extend 400mm around perimeter of all panels.

Membrane Finish:

Membrane finish by Bauder to lift shaft over-run as NBS J41/110E

Decking:

Slate grey Ecodek timber decking, or acceptable equivalent, as NBS Q55/110A, laid perpendicular to East/west facing walls on Ecodek bearers, or acceptable equivalent.

Timber seating and planter:

Bespoke seating and planters, made from Ecodek timber, or acceptable equivalent, as above

Sedum roof to cycle store:

Bauder Xero Floor sedum blanket or acceptable equivalent,  
as per Sub-Contractor design

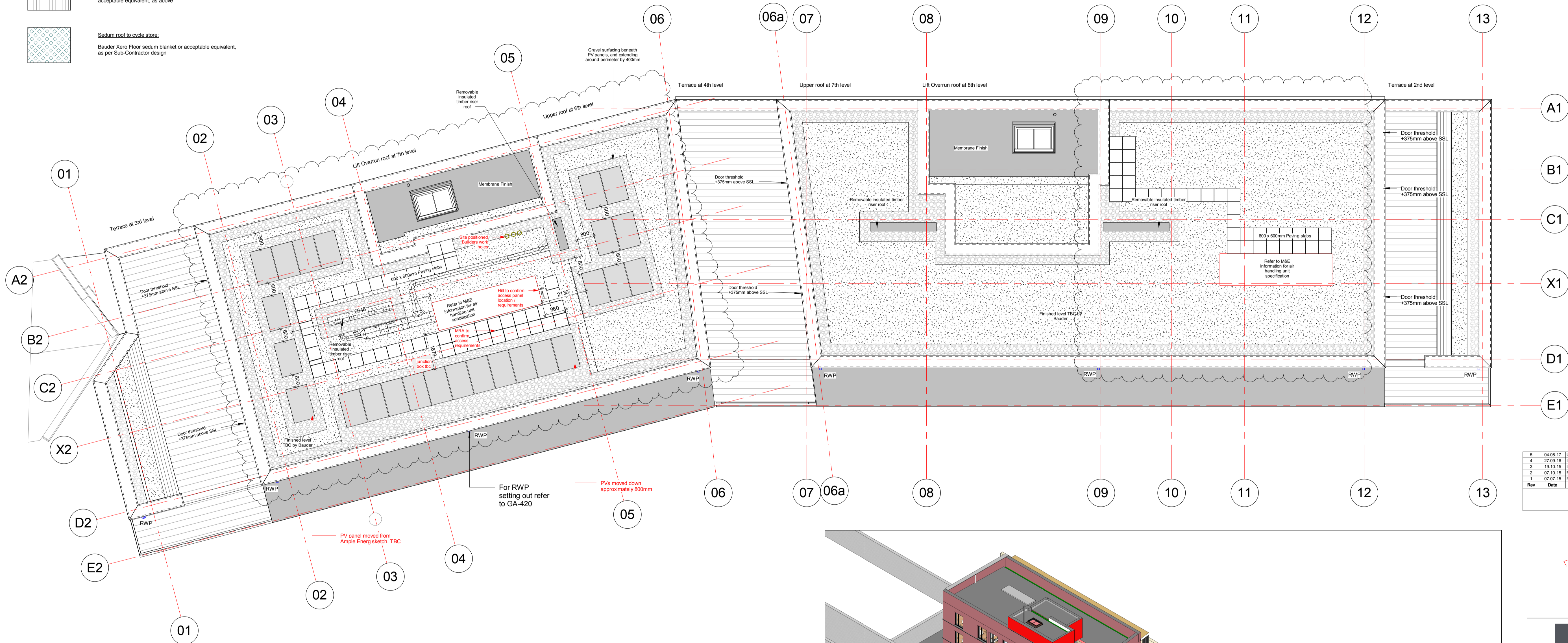
### Agar Grove - Plant Schedules: Roof Gardens

**Refer to Architects Green and Brown Roof Specification and Drawings**

Species	Habit	Age/condition Overall ht/ spread (cm)	Root Condition	Container Size	Notes
<b>Cycle Store and Lightweight roof Structures Green Roof Mat:</b>					
Sedum spp. Blanket e.g. Xero Flor sedum blanket available from Bauder or similar & approved					Proprietary pre-grown green roof system
<b>Brown Roof:</b> Plug planting in drifts into brown roof substrate, to provide circa 30% cover of brown roof areas.					
Sedum var.	Vegetative	15-20	CG	P9	Full pot.
Potentilla erecta	Vegetative	20-30	CG	1L	Full pot.
Erodium cicutarium	Vegetative	15-20	CG	p9	Full pot.
Galium saxatile	Vegetative	15-20	CG	p9	Full pot.
Trifolium glomeratum	Vegetative	15-20	CG	p9	Full pot.
Lotus corniculatus	Vegetative	15-20	CG	p9	Full pot.

### Roof planting schedule

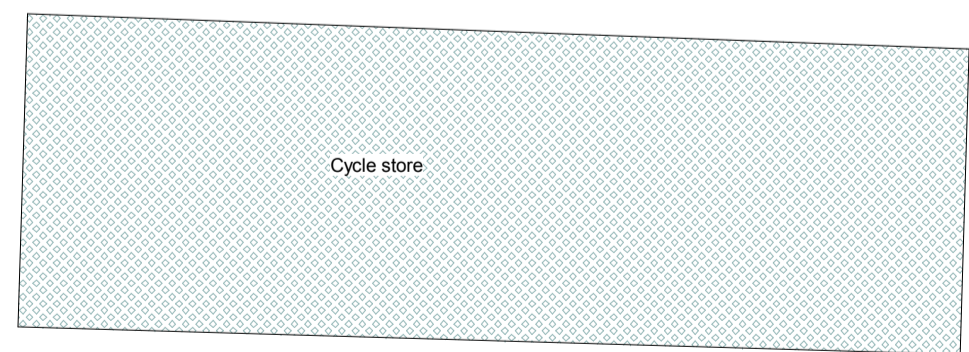
1:100



## Roof finishes and levels

1 : 100

**NOTE:**  
Dimensions are to centreline of RWPs  
100mm square section



## 3D roof overview from North West corner

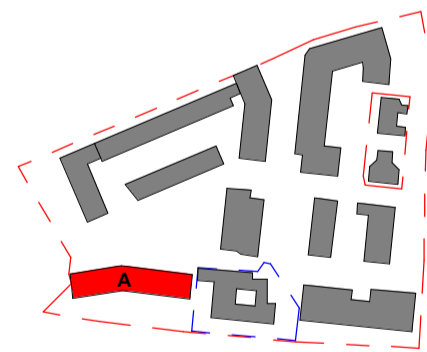


## Notes

This drawing is © Archetype Ltd.  
 Check this drawing is the latest revision.  
 Do not scale from this drawing.  
 Do not use the information on this drawing without checking all dimensions or  
 details of a legally binding contract.  
 Do not use any areas indicated for either valuation, purchase, sale or any other  
 purpose.  
 Do not reproduce any part of this drawing without prior written consent.  
 Report any discrepancies on this document to Archetype.  
**Read this drawing in conjunction with the associated models, specifications or  
 related consultative documents.**  
**Equivalent products / materials may be Approved where the Employer's  
 Requirements, Thermal Performance, Airtightness and any other specified  
 performance criteria are met. Subject to Archetype's Acceptance.**  
 It is made to be certified to comply with BS 14001 or BS68001 or a suitable  
 party to provide a Chain of Custody certificate in order to comply Code for Sustainable  
 Homes. All timber species and sources used in this development are not to be  
 included in the list of species and appendices for endangered or threatened species  
 (Appendix I, II or III)

5	04.08.17	Update to lower roof PV and paving design	AMF	IC
4	27.09.16	Issued for Construction. Updates to decking orientation	IC	EB
3	19.10.15	Issued for Building Control	CD	EB
2	07.10.15	Further information for release of planning condition	CD	RW
1	07.07.15	Preliminary Issue	IC	CD

Rev	Date	Description	Drawn	Check
Revision Schedule				



LONDON: 020 7403 2889      WWW.ARCHITYPE.CO.UK      HEREFORD: 01981 542

Client: Hill Partnership Ltd for Camden Council

Project: Agar Grove Block A

Drawing Title: **Roof finishes & Levels Plan**

Project	Originator	Type	Role	Phase	Block	Unit	Unique ID
---------	------------	------	------	-------	-------	------	-----------

Status:	Code	Suitability Description
	A	Issued for Construction

Revision:	Code	Revision Description
	C5	Revision description as above

Scale: As indicated @ A1 Date: 07 Jul 15

Drawn by: IC Checked by: CD

Internal Project Ref: 8090 Model Ref: AG-RAC2015-A-A