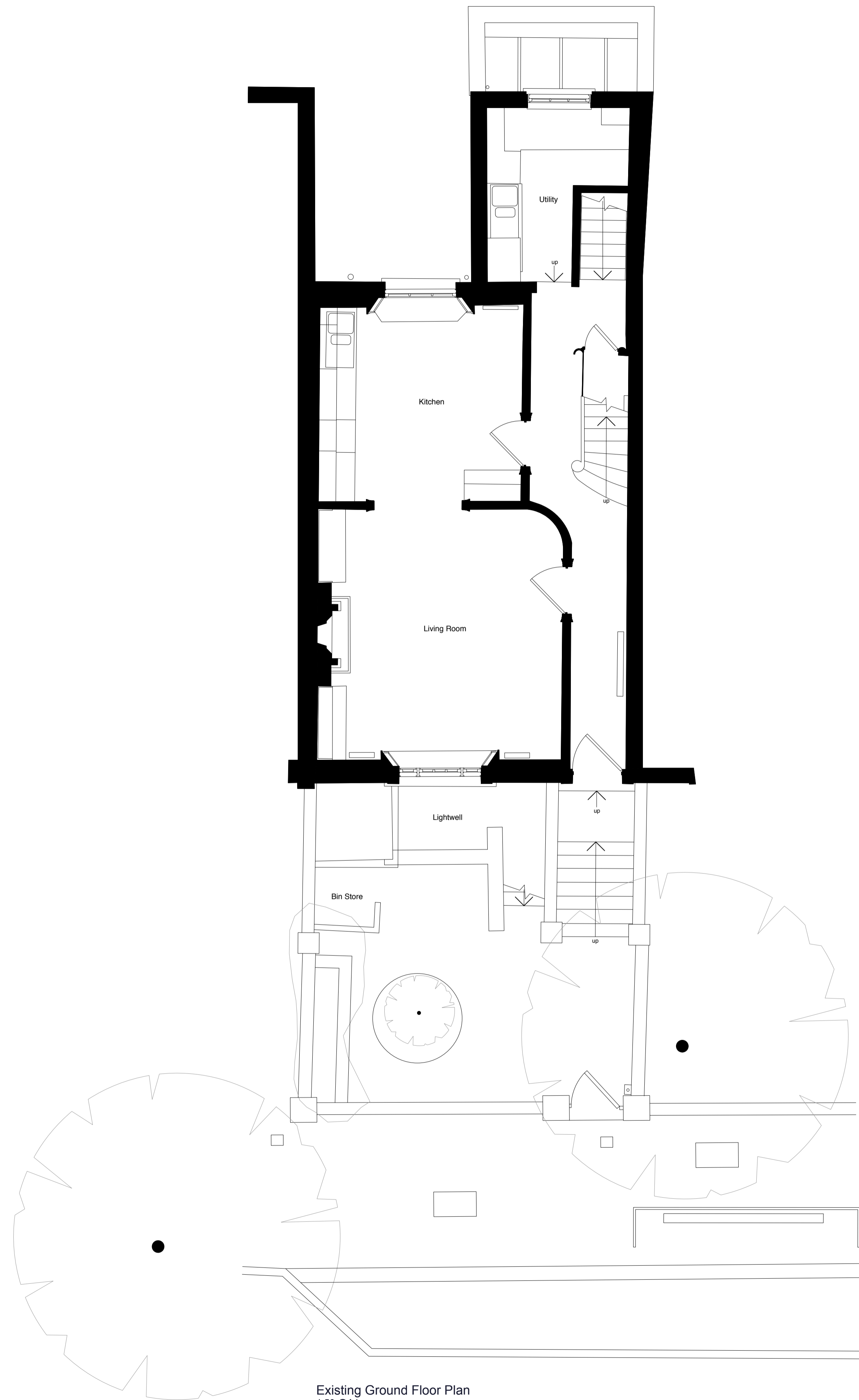
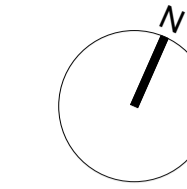


Existing Lower Ground Floor Plan  
1:50 @A1



Existing Ground Floor Plan  
1:50 @A1



James Wyman Architects

Studio  
100 Woodstock Rd  
Oxford OX2 7NE  
+44 (0)1865 433 606  
studio@jameswyman.co.uk  
www.jameswyman.co.uk



JOB TITLE

Belsize Road

DRAWING TITLE

Existing Lower Ground and  
Ground Floor Plans

SCALE 1:50

SIZE A1

STATUS Planning

NUMBER JW\_03\_001

REVISION

GENERAL NOTES

1. This drawing is to be read in conjunction with all relevant engineer's and specialist's drawings and specifications. Any discrepancies discovered between drawings are to be reported to the CA immediately.

2. Health & Safety - All specific drawing notes are to be read in conjunction with the project Health & Safety documentation

3. Do not scale from this drawing in either paper or digital form. Use written dimensions only. All dimensions are in millimetres. To check the drawing has been printed at the intended scale this bar should be 50mm long at A1 and 25mm long at A3.

