

0m 0.5m 1m 5m

AS PROPOSED \_ Lower Ground Floor Layout



**General Notes**

All dimensions to be verified on site  
 To be read in conjunction with all relevant documents  
 In the event of discrepancy notify the Architect immediately  
 This document is copyright of Hugh Cullum Architects Ltd

**Issue Status**

SK	Sketch	E	Existing Condition
D	Design	P	Permissions
T	Tender	C	Contract

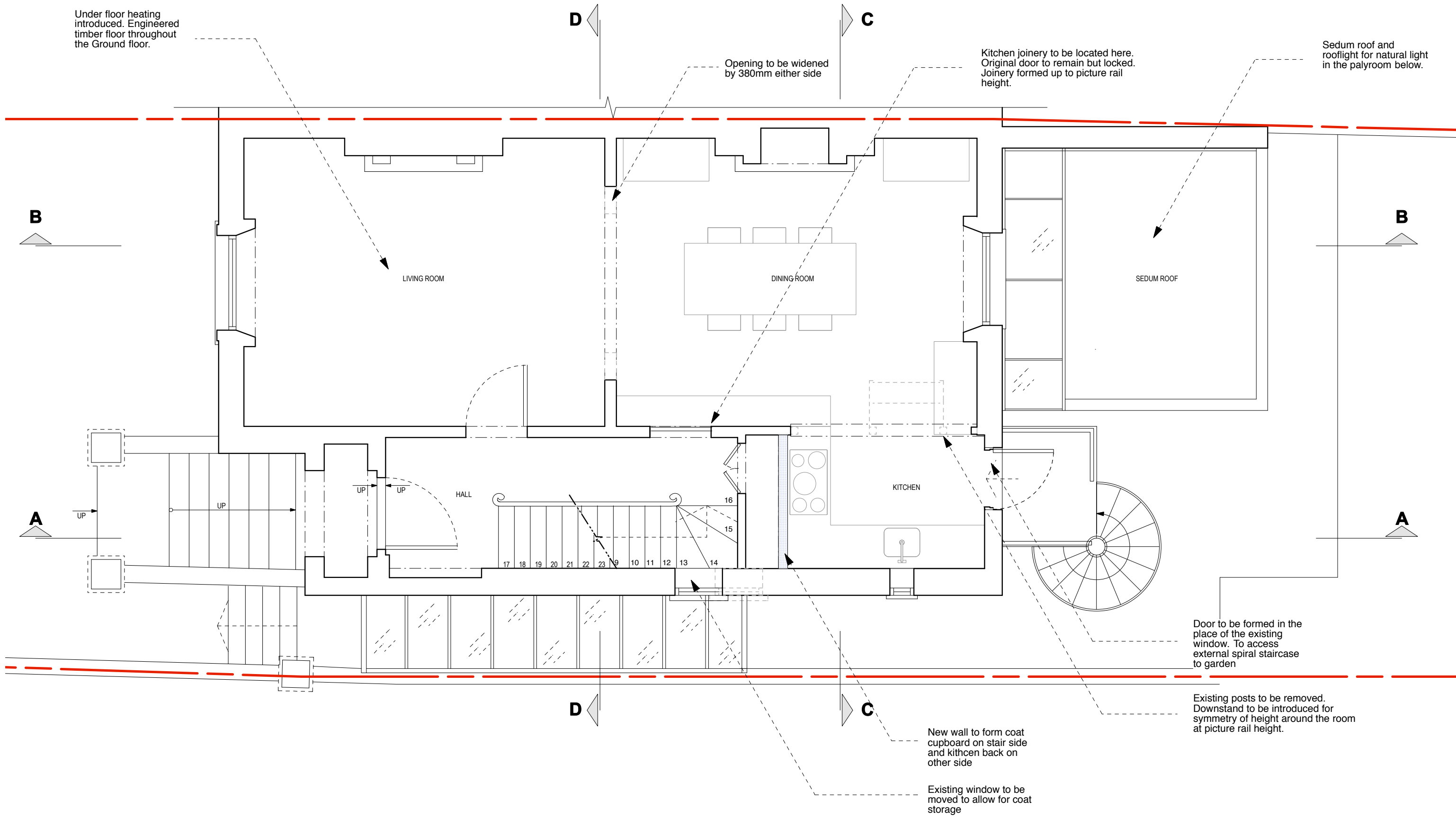
(.) : Issued for Planning (14.08.17/OA/HC)  
 (.) : Revision Information (00.00.02/AA/BB)  
 Revision: Information (date/drawn by/checked by)

**HUGH CULLUM**  
 ARCHITECTS LTD  
 Bloomsbury Design  
 61b Judd Street  
 London WC1H 9QT  
 t 020 7383 7647  
 f 020 7387 7645  
 mail@hughcullum.com

**2 Provost Road**

Planning Proposal  
 Lower Ground Floor  
 1:50@A3 August 2017

PR002-P110( )



0m 0.5m 1m 5m

**AS PROPOSED** \_ Ground Floor Layout



**General Notes**

All dimensions to be verified on site  
 To be read in conjunction with all relevant documents  
 In the event of discrepancy notify the Architect immediately  
 This document is copyright of Hugh Cullum Architects Ltd

**Issue Status**

SK	Sketch	E	Existing Condition
D	Design	P	Permissions
T	Tender	C	Contract

(\_) : Issued for Planning (14.08.17/OA/HC)  
 (.) : Revision Information (00.00.02/AA/BB)  
 Revision: Information (date/drawn by/checked by)

**HUGH CULLUM**  
 ARCHITECTS LTD  
 Bloomsbury Design  
 61b Judd Street  
 London WC1H 9QT  
 t 020 7383 7647  
 f 020 7387 7645  
 mail@hughcullum.com

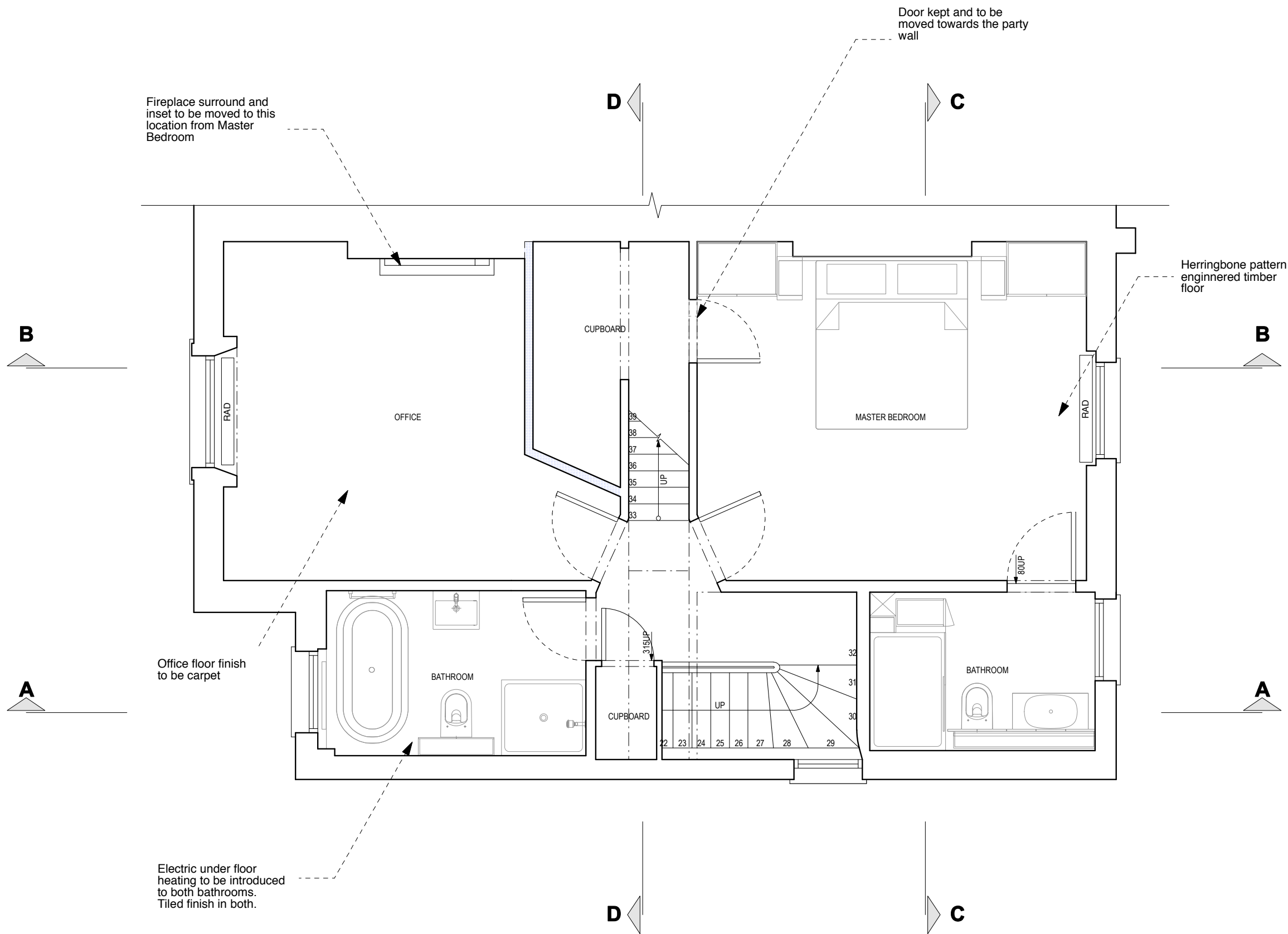
**2 Provost Road**

Planning Proposal  
 Ground Floor  
 1:50@A3 August 2017

**PR002-P111( )**

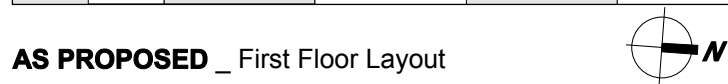
**General Notes**  
 All dimensions to be verified on site  
 To be read in conjunction with all relevant documents  
 In the event of discrepancy notify the Architect immediately  
 This document is copyright of Hugh Cullum Architects Ltd

**Issue Status**  
 SK Sketch                    E Existing Condition  
 D Design                    P Permissions  
 T Tender                    C Contract



(\_: Revision Information (00.00.02/AA/BB)  
 Revision: Information (date/drawn by/checked by)

0m 0.5m 1m 5m



**AS PROPOSED** \_ First Floor Layout

**HUGH CULLUM**    **2 Provost Road**  
 ARCHITECTS LTD  
 Bloomsbury Design  
 61b Judd Street  
 London WC1H 9QT  
 t 020 7383 7647  
 f 020 7387 7645  
 mail@hughcullum.com

Planning Proposal  
 First Floor  
 1:50@A3 August 2017  
**PR002-P112(**

**General Notes**  
 All dimensions to be verified on site  
 To be read in conjunction with all relevant documents  
 In the event of discrepancy notify the Architect immediately  
 This document is copyright of Hugh Cullum Architects Ltd

**Issue Status**  
 SK Sketch                    E Existing Condition  
 D Design                    P Permissions  
 T Tender                    C Contract

Dotted line shows the outline of dormer on No1

**B**

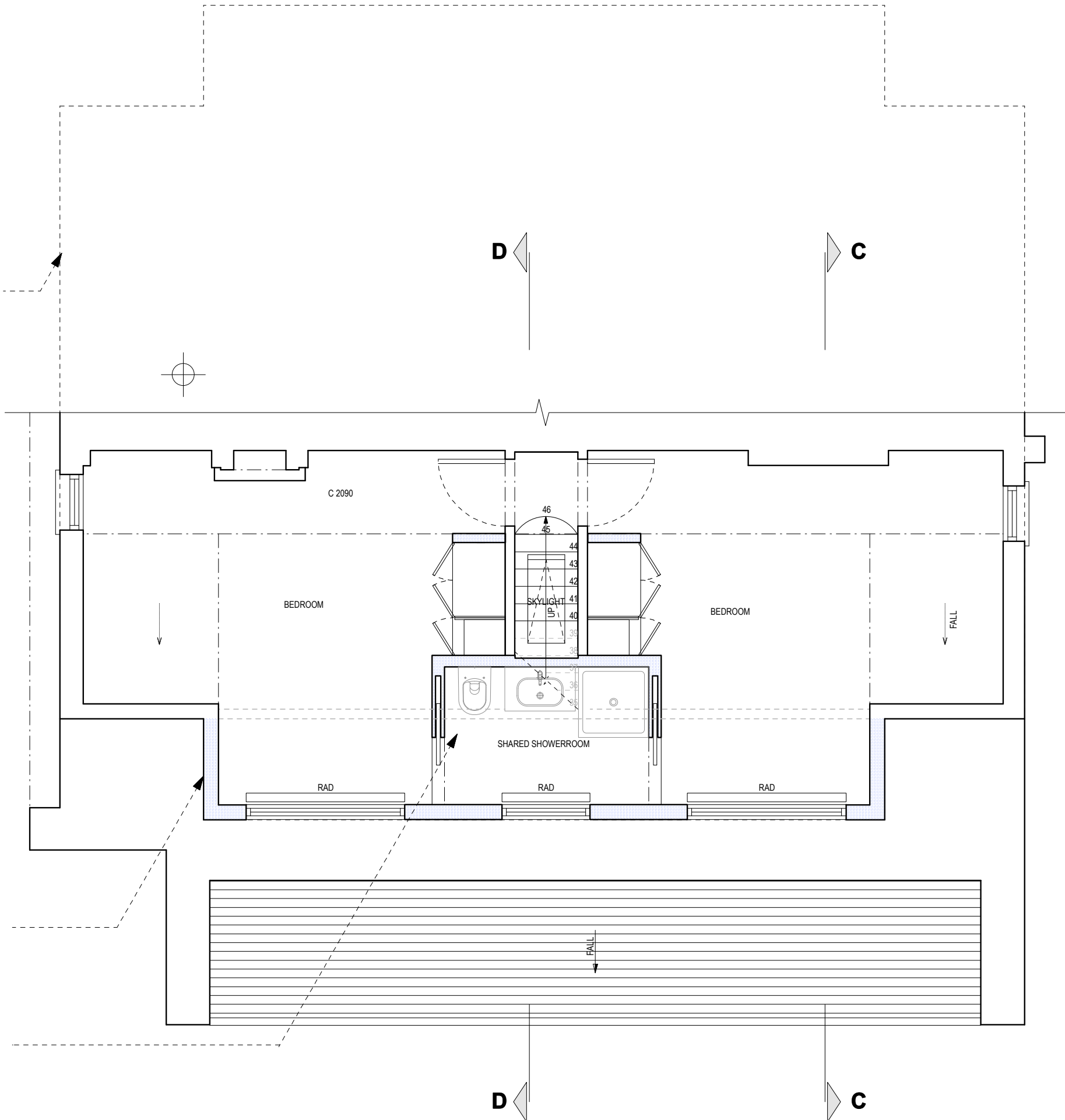
**B**

**A**

**A**

Dormer to match No1 Provost Road hence create a symmetrical building.

"Jack and Jill" to serve both twin rooms



**D**

**C**

**D**

**C**

0m 0.5m 1m 5m



**AS PROPOSED** \_ Second Floor Layout

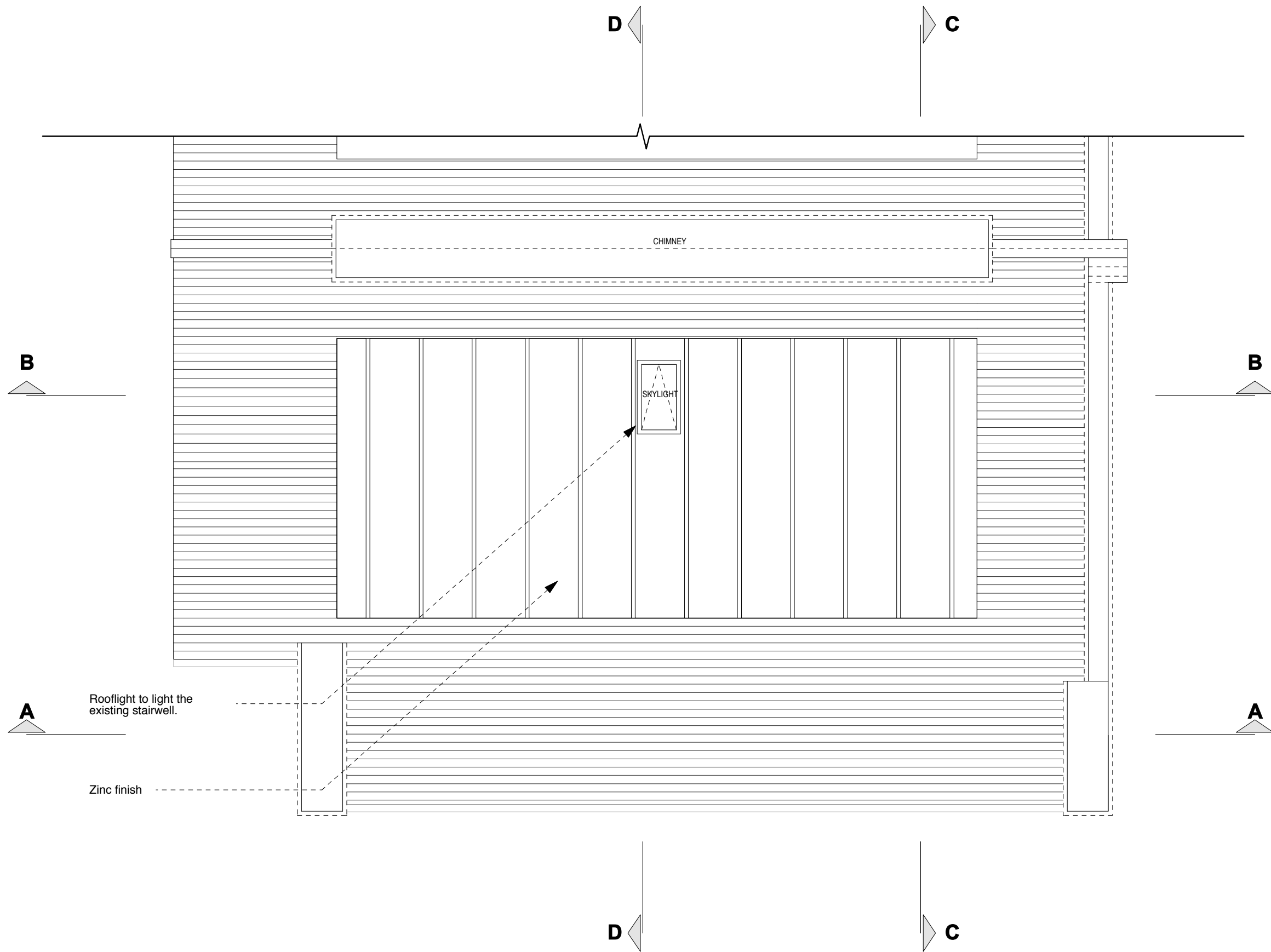
( ): Revision Information (00.00.02/AA/BB)  
 Revision: Information (date/drawn by/checked by)

**HUGH CULLUM ARCHITECTS LTD**  
 Bloomsbury Design  
 61b Judd Street  
 London WC1H 9QT  
 t 020 7383 7647  
 f 020 7387 7645  
 mail@hughcullum.com

**2 Provost Road**  
 Planning Proposal  
 Second Floor  
 1:50@A3 August 2017  
**PR002-P113( )**

**General Notes**  
 All dimensions to be verified on site  
 To be read in conjunction with all relevant documents  
 In the event of discrepancy notify the Architect immediately  
 This document is copyright of Hugh Cullum Architects Ltd

**Issue Status**  
 SK Sketch E Existing Condition  
 D Design P Permissions  
 T Tender C Contract



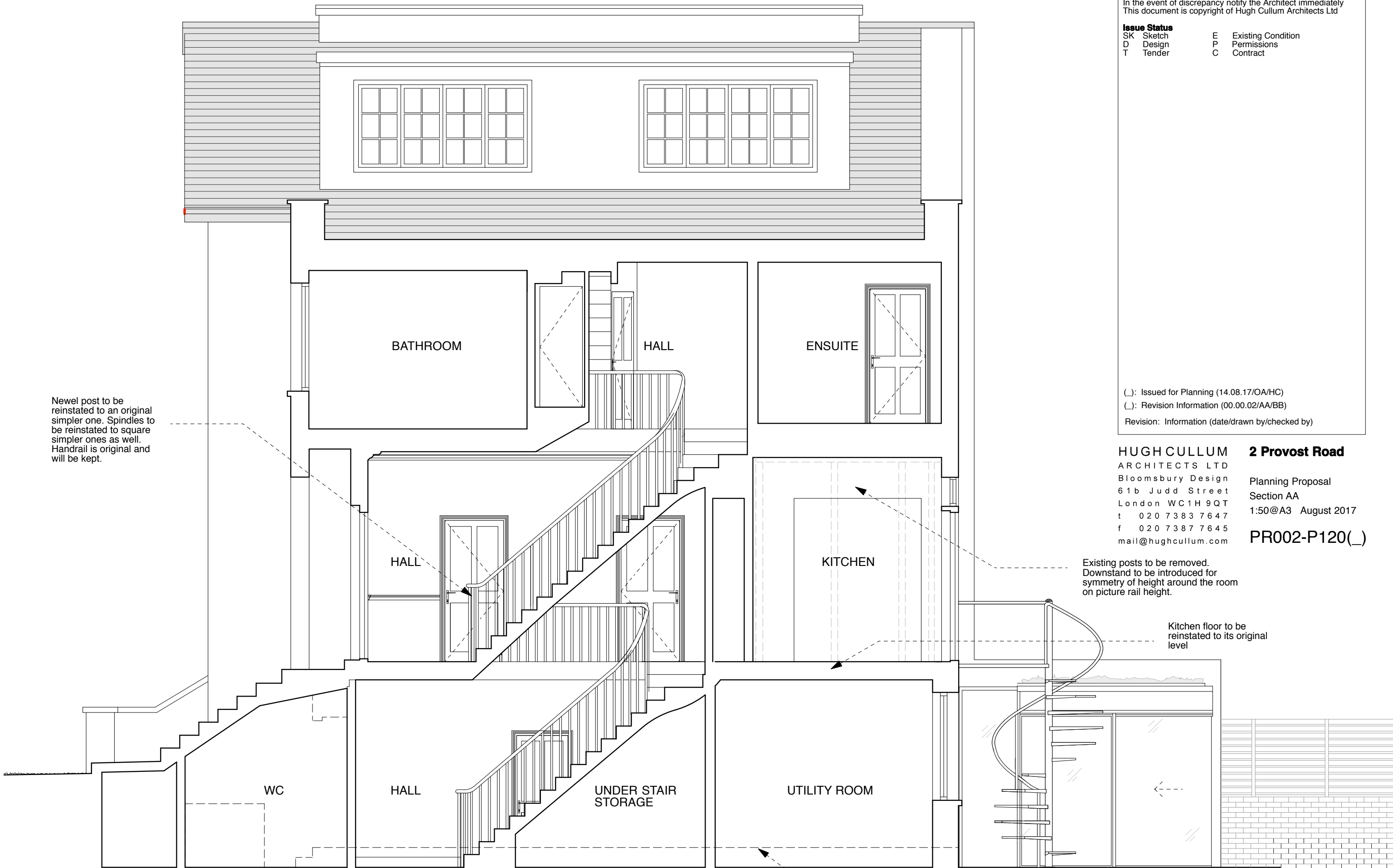
0m 0.5m 1m 5m

AS PROPOSED \_ Roof Layout



(\_): Revision Information (00.00.02/AA/BB)  
 Revision: Information (date/drawn by/checked by)

**HUGH CULLUM** **2 Provost Road**  
 ARCHITECTS LTD  
 Bloomsbury Design  
 61b Judd Street  
 London WC1H 9QT  
 t 020 7383 7647  
 f 020 7387 7645  
 mail@hughcullum.com  
 Planning Proposal  
 Roof Layout  
 1:50@A3 August 2017  
 PR002-P114(\_)



**General Notes**  
 All dimensions to be verified on site  
 To be read in conjunction with all relevant documents  
 In the event of discrepancy notify the Architect immediately  
 This document is copyright of Hugh Cullum Architects Ltd

**Issue Status**

SK	Sketch	E	Existing Condition
D	Design	P	Permissions
T	Tender	C	Contract

(\_) : Issued for Planning (14.08.17/OA/HC)  
 (.) : Revision Information (00.00.02/AA/BB)  
 Revision: Information (date/drawn by/checked by)

**HUGH CULLUM ARCHITECTS LTD**  
 Bloomsbury Design  
 61b Judd Street  
 London WC1H 9QT  
 t 020 7383 7647  
 f 020 7387 7645  
 mail@hughcullum.com

**2 Provost Road**  
 Planning Proposal  
 Section AA  
 1:50@A3 August 2017  
 PR002-P120(\_)

0m 0.5m 1m 5m

AS PROPOSED \_ Section AA





**General Notes**  
 All dimensions to be verified on site  
 To be read in conjunction with all relevant documents  
 In the event of discrepancy notify the Architect immediately  
 This document is copyright of Hugh Cullum Architects Ltd

**Issue Status**

SK	Sketch	E	Existing Condition
D	Design	P	Permissions
T	Tender	C	Contract

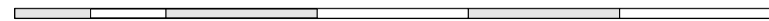
Existing opening to widen (by 350mm either side) to allow for natural light in the playroom

Door to be formed in the place of the existing window.

New timber white sash to match existing in style and materials

(\_): Revision Information (00.00.02/AA/BB)  
 Revision: Information (date/drawn by/checked by)

0m 0.5m 1m 5m



AS PROPOSED \_ Section CC

**HUGH CULLUM** **2 Provost Road**  
 ARCHITECTS LTD  
 Bloomsbury Design  
 61b Judd Street  
 London WC1H 9QT  
 t 020 7383 7647  
 f 020 7387 7645  
 mail@hughcullum.com  
 Planning Proposal  
 Section CC  
 1:50@A3 August 2017  
 PR002-P122(\_)

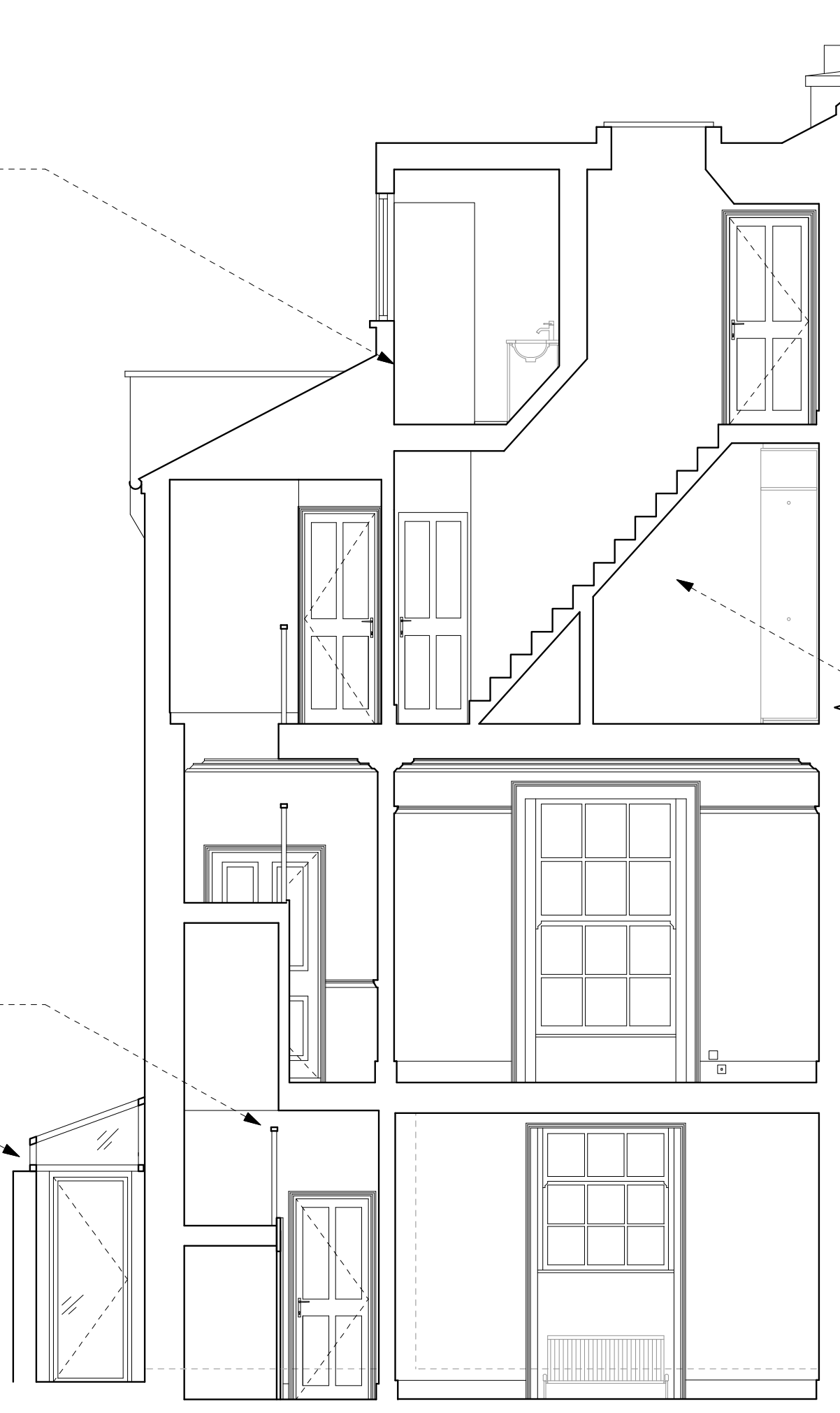


"Jack and Jill" to serve both twin rooms

Staircase to be reinstated to its original position

Glazed canopy above the side passage for rain-proof side entrance to the dwelling

wardrobe to be formed under stair and also by occupying some space from the office



AS PROPOSED \_ Section DD

**General Notes**  
 All dimensions to be verified on site  
 To be read in conjunction with all relevant documents  
 In the event of discrepancy notify the Architect immediately  
 This document is copyright of Hugh Cullum Architects Ltd

**Issue Status**

SK	Sketch	E	Existing Condition
D	Design	P	Permissions
T	Tender	C	Contract

(\_): Revision Information (00.00.02/AA/BB)  
 Revision: Information (date/drawn by/checked by)

**HUGH CULLUM** **2 Provost Road**  
 ARCHITECTS LTD  
 Bloomsbury Design  
 61b Judd Street  
 London WC1H 9QT  
 t 020 7383 7647  
 f 020 7387 7645  
 mail@hughcullum.com

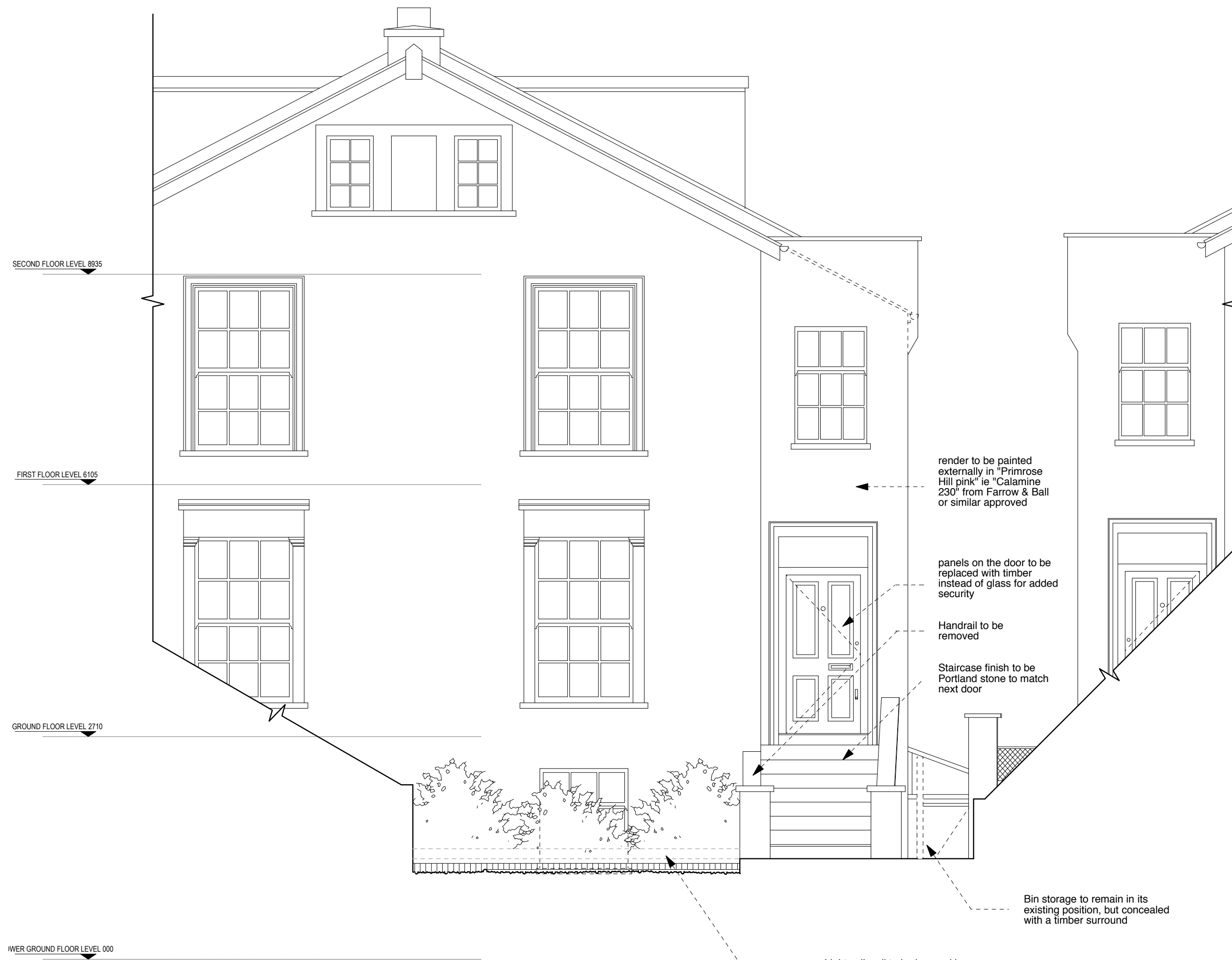
Planning Proposal  
 Section DD  
 1:50@A3 August 2017  
**PR002-P123(\_)**

**General Notes**  
 All dimensions to be verified on site  
 To be read in conjunction with all relevant documents  
 In the event of discrepancy notify the Architect immediately  
 This document is copyright of Hugh Cullum Architects Ltd

**Issue Status**

SK	Sketch	E	Existing Condition
D	Design	P	Permissions
T	Tender	C	Contract

(\_): Revision Information (00.00.02/AA/BB)  
 Revision: Information (date/drawn by/checked by)

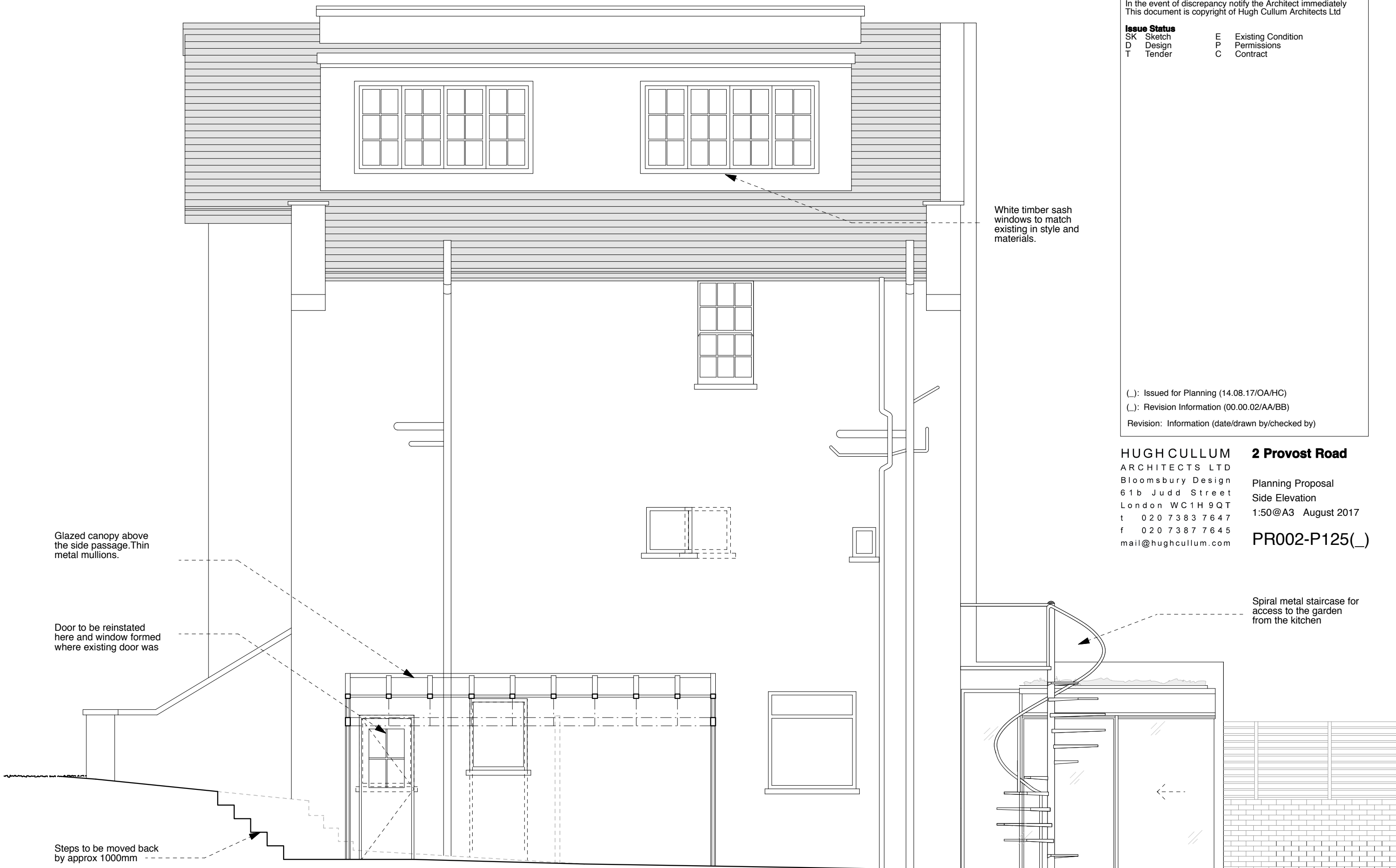


**AS PROPOSED** \_ Front Elevation

0m 0.5m 1m 5m

**HUGH CULLUM**  
 ARCHITECTS LTD  
 Bloomsbury Design  
 61b Judd Street  
 London WC1H 9QT  
 t 020 7383 7647  
 f 020 7387 7645  
 mail@hughcullum.com

**2 Provost Road**  
 Planning Proposal  
 Front Elevation  
 1:50@A3 August 2017  
 PR002-P124(\_)



**General Notes**  
 All dimensions to be verified on site  
 To be read in conjunction with all relevant documents  
 In the event of discrepancy notify the Architect immediately  
 This document is copyright of Hugh Cullum Architects Ltd

**Issue Status**

SK	Sketch	E	Existing Condition
D	Design	P	Permissions
T	Tender	C	Contract

(\_) : Issued for Planning (14.08.17/OA/HC)  
 ( ) : Revision Information (00.00.02/AA/BB)  
 Revision: Information (date/drawn by/checked by)

**HUGH CULLUM ARCHITECTS LTD**  
 Bloomsbury Design  
 61b Judd Street  
 London WC1H 9QT  
 t 020 7383 7647  
 f 020 7387 7645  
 mail@hughcullum.com

**2 Provost Road**  
 Planning Proposal  
 Side Elevation  
 1:50@A3 August 2017  
 PR002-P125(\_)

**AS PROPOSED** \_ Side Elevation



**General Notes**  
 All dimensions to be verified on site  
 To be read in conjunction with all relevant documents  
 In the event of discrepancy notify the Architect immediately  
 This document is copyright of Hugh Cullum Architects Ltd

**Issue Status**  
 SK Sketch                    E Existing Condition  
 D Design                    P Permissions  
 T Tender                    C Contract

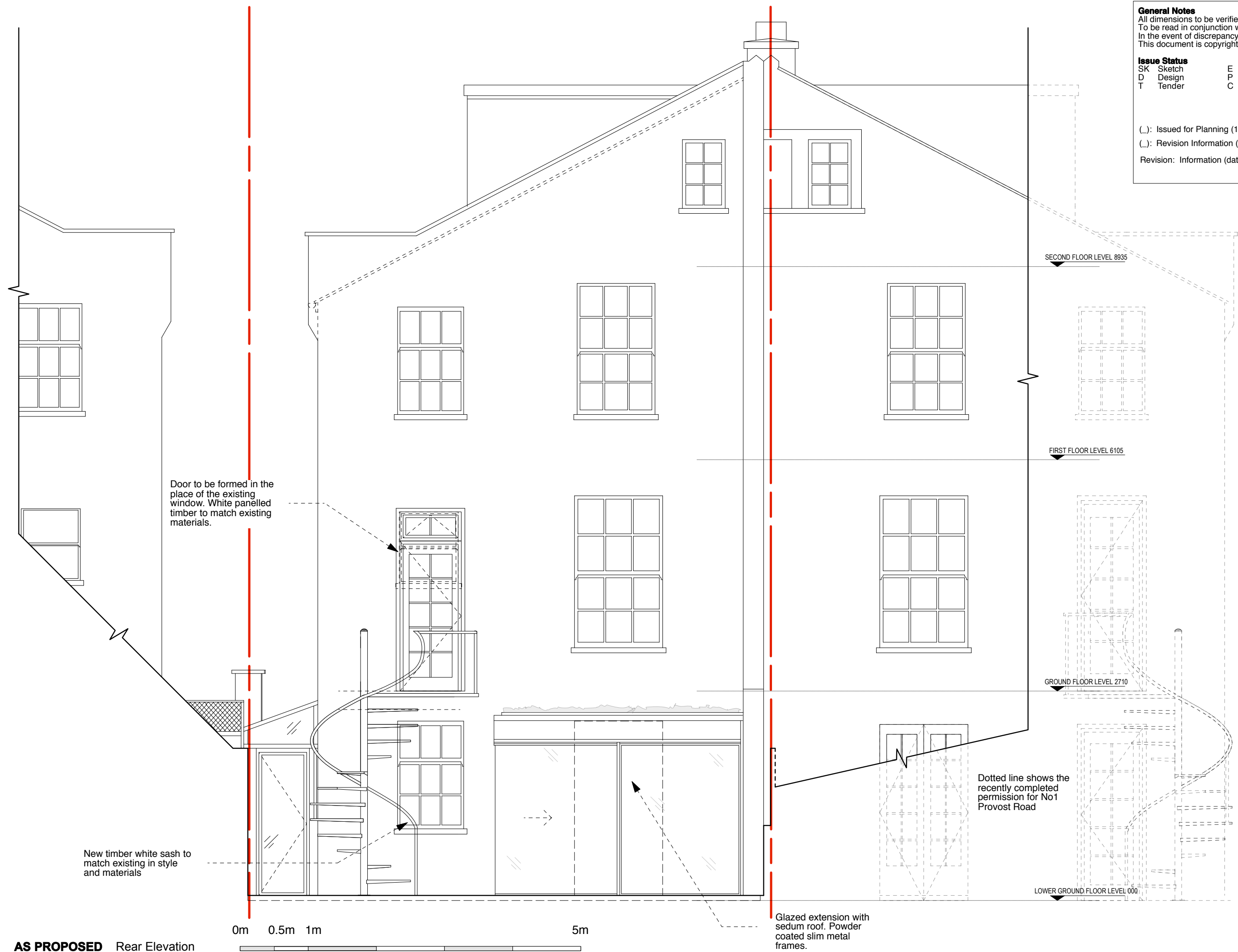
(.) : Issued for Planning (14.08.17/OA/HC)  
 (.) : Revision Information (00.00.02/AA/BB)  
 Revision: Information (date/drawn by/checked by)

**2 Provost Road**

Planning Proposal  
 Rear Elevation  
 1:50@A3 August 2017

**PR002-P126(.)**

**HUGH CULLUM**  
 ARCHITECTS LTD  
 Bloomsbury Design  
 61b Judd Street  
 London WC1H 9QT  
 t 020 7383 7647  
 f 020 7387 7645  
 mail@hughcullum.com



**AS PROPOSED** \_ Rear Elevation