

0m 0.5m 1m 5m

AS EXISTING _ Lower Ground Floor Layout

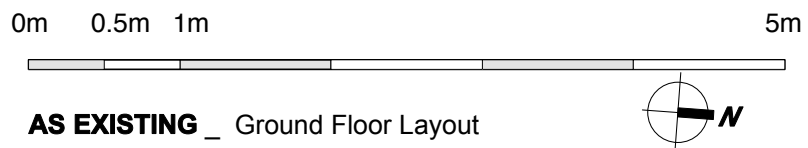
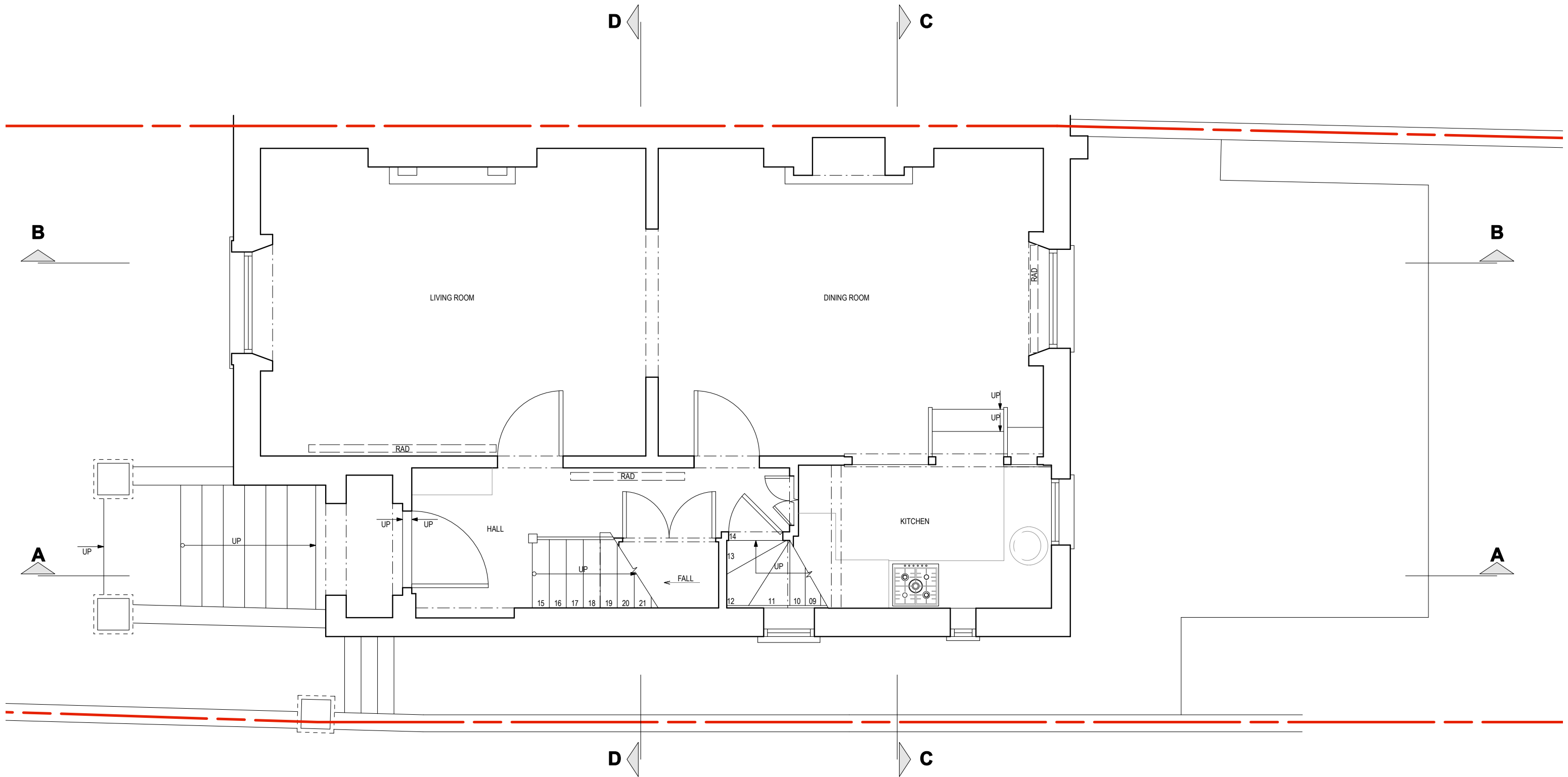


General Notes
 All dimensions to be verified on site
 To be read in conjunction with all relevant documents
 In the event of discrepancy notify the Architect immediately
 This document is copyright of Hugh Cullum Architects Ltd

Issue Status
 SK Sketch
 D Design
 T Tender
 E Existing Condition
 P Permissions
 C Contract

(_) : Issued for Planning (14.08.17/OA/HC)
 (.) : Revision Information (00.00.02/AA/BB)
 Revision: Information (date/drawn by/checked by)

HUGH CULLUM ARCHITECTS LTD **2 Provost Road**
 Bloomsbury Design
 61b Judd Street
 London WC1H 9QT
 t 020 7383 7647
 f 020 7387 7645
 mail@hughcullum.com
 Existing Condition
 Lower Ground Floor
 1:50@A3 August 2017
PR002-E110()



AS EXISTING _ Ground Floor Layout

General Notes

All dimensions to be verified on site
 To be read in conjunction with all relevant documents
 In the event of discrepancy notify the Architect immediately
 This document is copyright of Hugh Cullum Architects Ltd

Issue Status

| | | | |
|----|--------|---|--------------------|
| SK | Sketch | E | Existing Condition |
| D | Design | P | Permissions |
| T | Tender | C | Contract |

(_): Issued for Planning (14.08.17/OA/HC)
 (.): Revision Information (00.00.02/AA/BB)
 Revision: Information (date/drawn by/checked by)

HUGH CULLUM
 ARCHITECTS LTD
 Bloomsbury Design
 61b Judd Street
 London WC1H 9QT
 t 020 7383 7647
 f 020 7387 7645
 mail@hughcullum.com

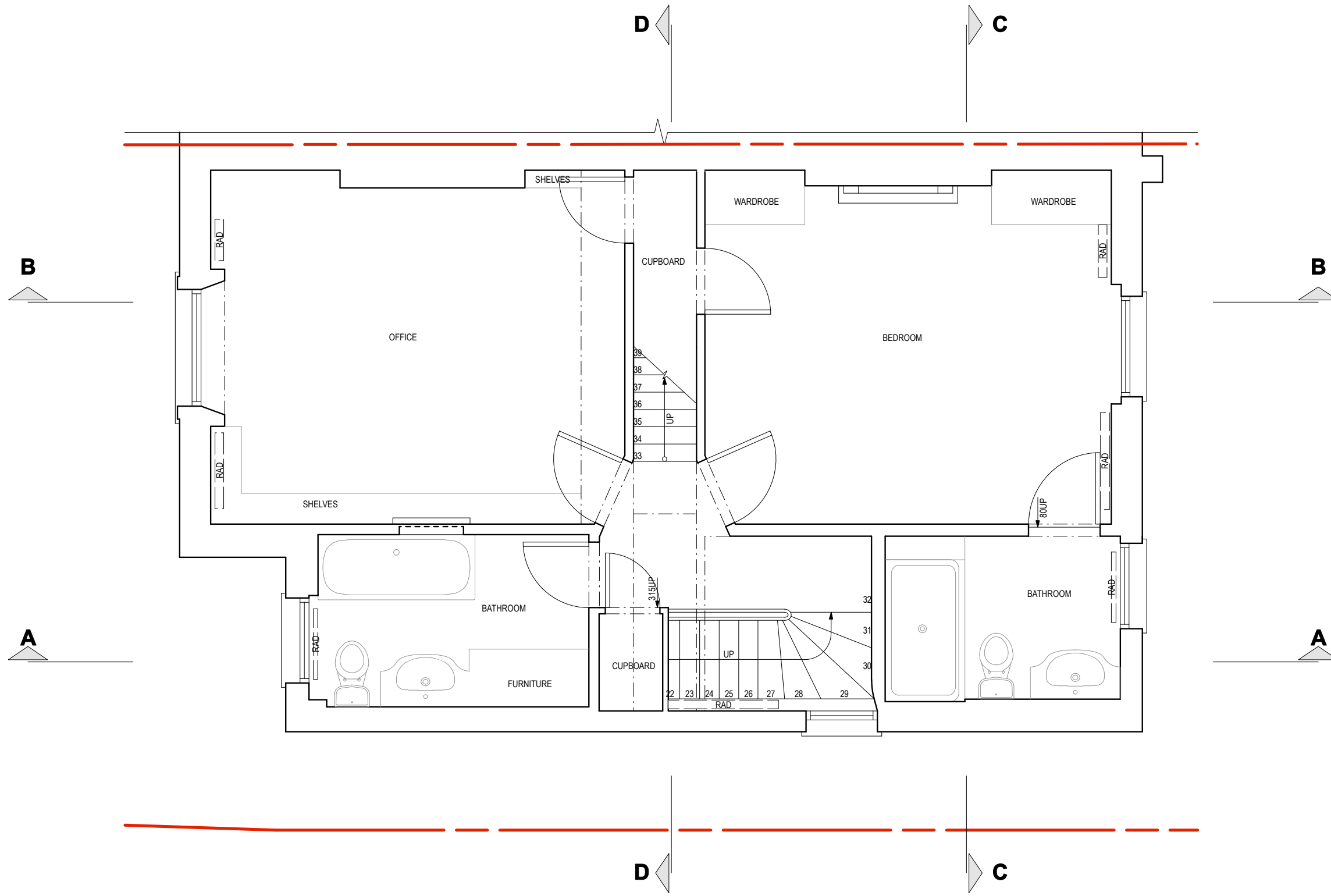
2 Provost Road

Existing Condition
 Ground Floor
 1:50@A3 August 2017

PR002-E111(_)

General Notes
 Do not scale from this drawing
 All dimensions to be verified on site
 To be read in conjunction with all relevant documents
 In the event of discrepancy notify the Architect immediately
 This document is copyright of Hugh Cullum Architects Ltd

Issue Status
 SK Sketch E Existing Condition
 D Design P Permissions
 T Tender C Contract



(_) : Issued for Planning (14.08.17/OA/HC)
 () : Revision Information (00.00.02/AA/BB)
 Revision: Information (date/drawn by/checked by)

0m 0.5m 1m 5m



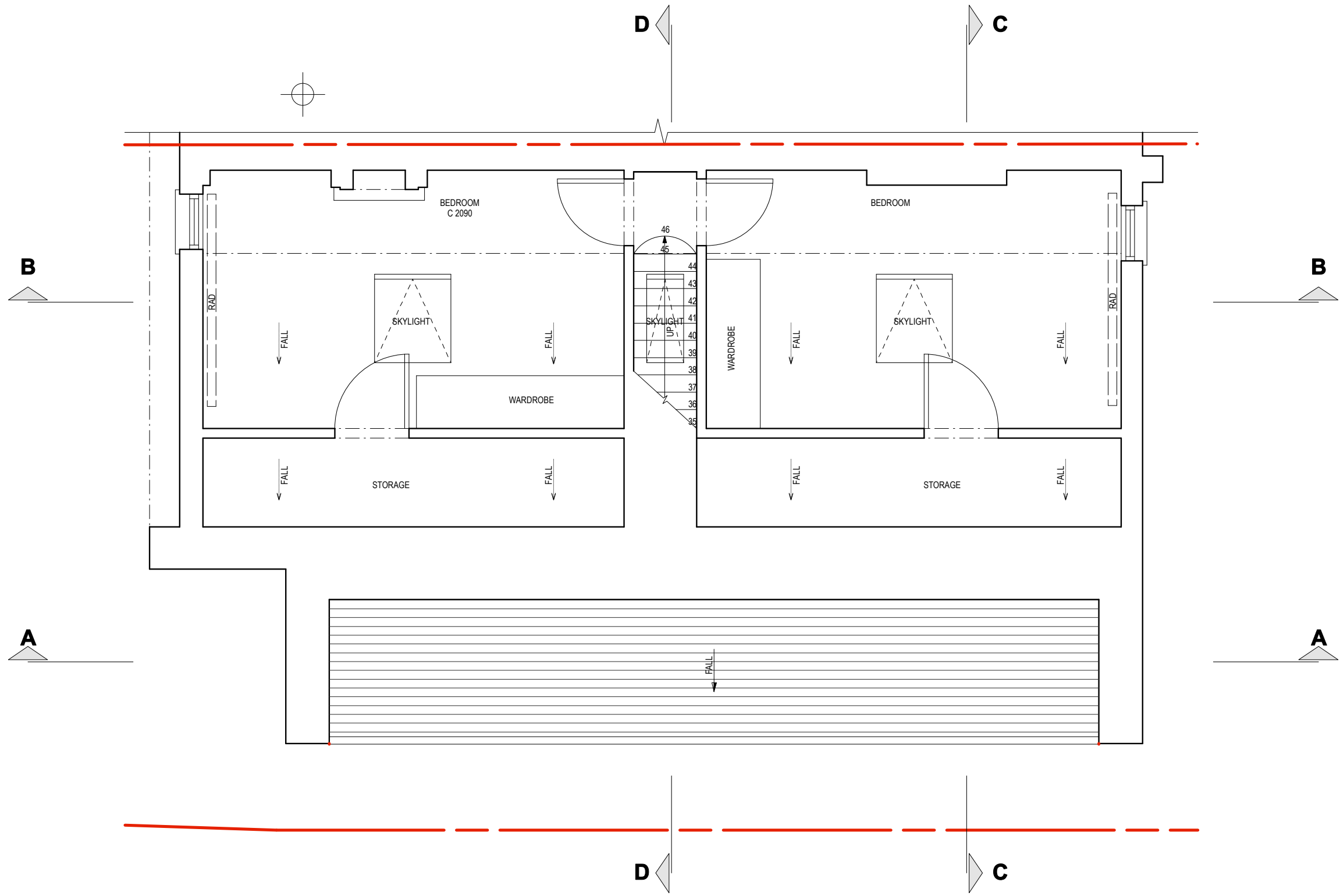
AS EXISTING _ First Floor Layout

HUGH CULLUM ARCHITECTS LTD
 Bloomsbury Design
 61b Judd Street
 London WC1H 9QT
 t 020 7383 7647
 f 020 7387 7645
 mail@hughcullum.com

2 Provost Road
 Existing Condition
 First Floor
 1:50@A3 August 2017
PR002-E112()

General Notes
 Do not scale from this drawing
 All dimensions to be verified on site
 To be read in conjunction with all relevant documents
 In the event of discrepancy notify the Architect immediately
 This document is copyright of Hugh Cullum Architects Ltd

Issue Status
 SK Sketch E Existing Condition
 D Design P Permissions
 T Tender C Contract



(_) : Issued for Planning (14.08.17/OA/HC)
 (.) : Revision Information (00.00.02/AA/BB)
 Revision: Information (date/drawn by/checked by)

0m 0.5m 1m 5m



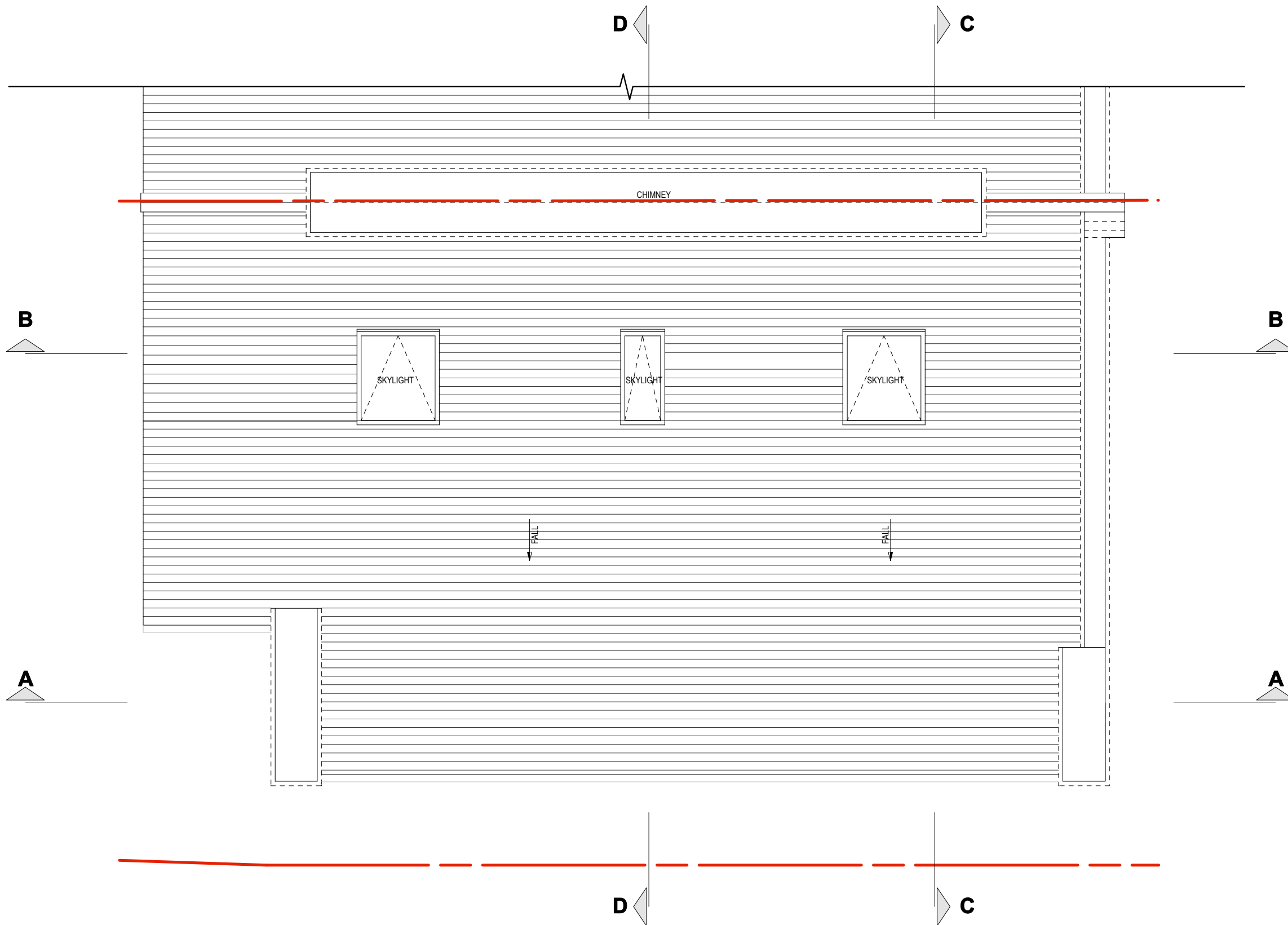
AS EXISTING _ Second Floor Layout

HUGH CULLUM ARCHITECTS LTD
 Bloomsbury Design
 61b Judd Street
 London WC1H 9QT
 t 020 7383 7647
 f 020 7387 7645
 mail@hughcullum.com

2 Provost Road
 Existing Condition
 Second Floor
 1:50@A3 August 2017
PR002-E113()

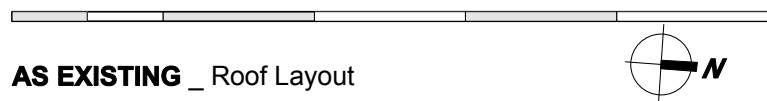
General Notes
 Do not scale from this drawing
 All dimensions to be verified on site
 To be read in conjunction with all relevant documents
 In the event of discrepancy notify the Architect immediately
 This document is copyright of Hugh Cullum Architects Ltd

Issue Status
 SK Sketch
 D Design
 T Tender
 E Existing Condition
 P Permissions
 C Contract



(_) : Issued for Planning (14.08.17/OA/HC)
 () : Revision Information (00.00.02/AA/BB)
 Revision: Information (date/drawn by/checked by)

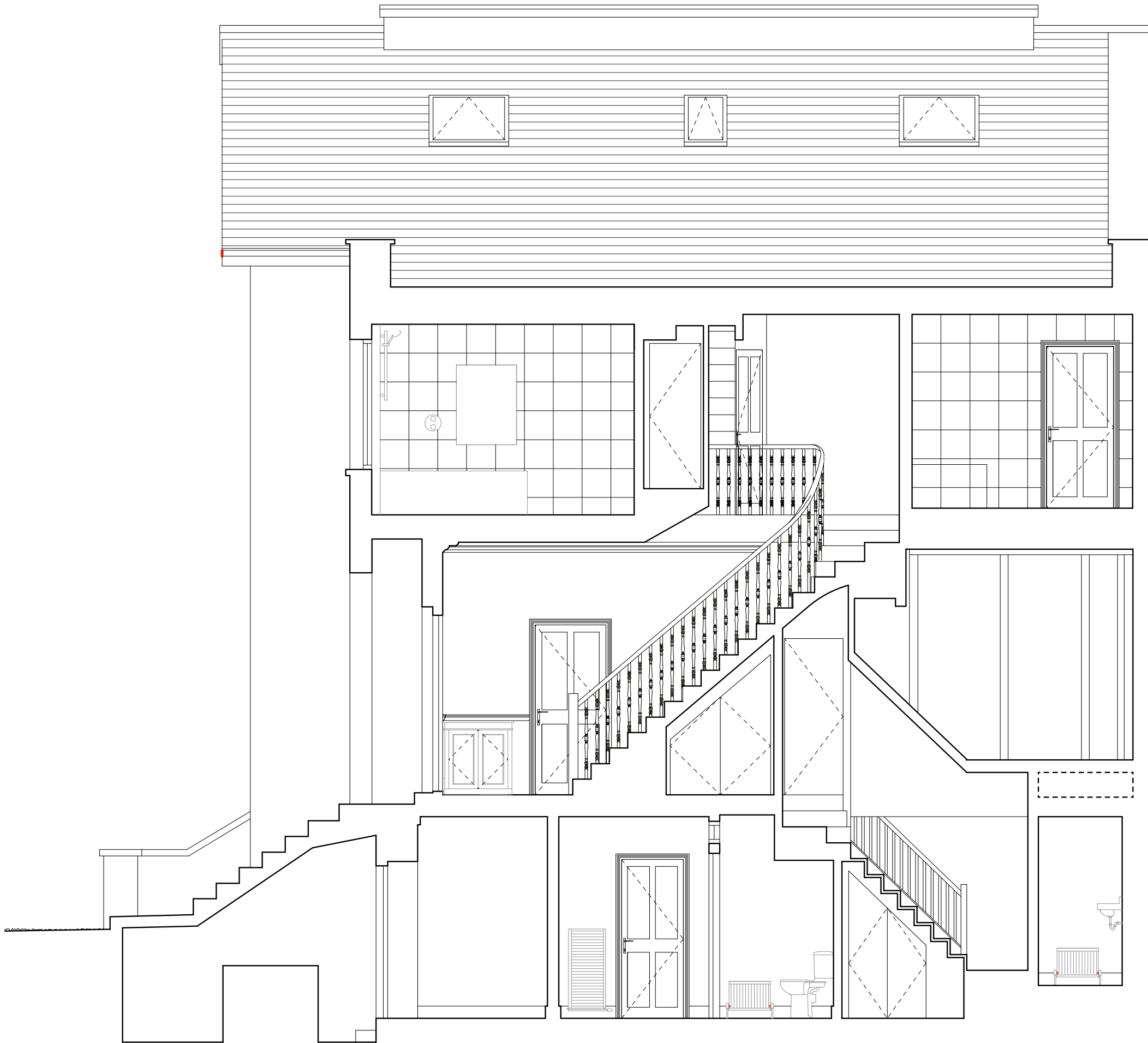
0m 0.5m 1m 5m



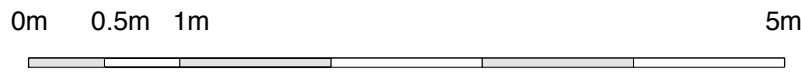
AS EXISTING _ Roof Layout

HUGH CULLUM ARCHITECTS LTD
 Bloomsbury Design
 61b Judd Street
 London WC1H 9QT
 t 020 7383 7647
 f 020 7387 7645
 mail@hughcullum.com

2 Provost Road
 Existing Condition
 Roof Layout
 1:50@A3 August 2017
 PR002-E114()



AS EXISTING _ Section AA



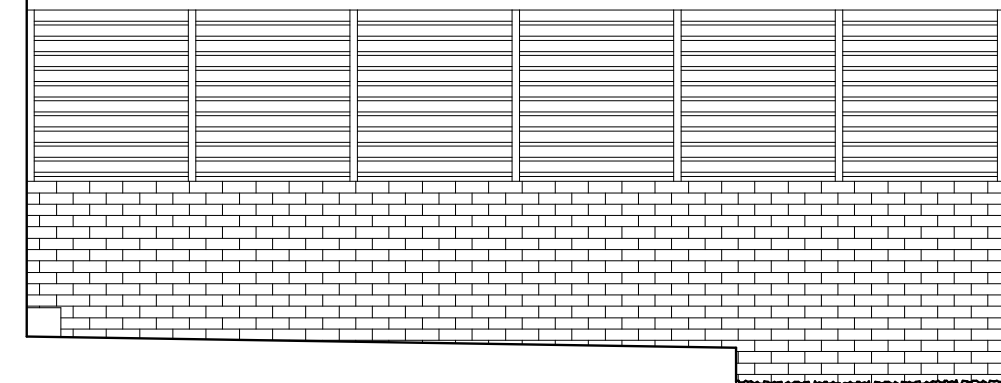
General Notes
 Do not scale from this drawing
 All dimensions to be verified on site
 To be read in conjunction with all relevant documents
 In the event of discrepancy notify the Architect immediately
 This document is copyright of Hugh Cullum Architects Ltd

Issue Status

| | | | |
|----|--------|---|--------------------|
| SK | Sketch | E | Existing Condition |
| D | Design | P | Permissions |
| T | Tender | C | Contract |

(_): Issued for Planning (14.08.17/OA/HC)
 (_): Revision Information (00.00.02/AA/BB)
 Revision: Information (date/drawn by/checked by)

HUGH CULLUM **2 Provost Road**
 ARCHITECTS LTD
 Bloomsbury Design Existing Condition
 61b Judd Street Section AA
 London WC1H 9QT 1:50@A3 August 2017
 t 020 7383 7647
 f 020 7387 7645
 mail@hughcullum.com **PR002-E120(_)**



General Notes
 Do not scale from this drawing
 All dimensions to be verified on site
 To be read in conjunction with all relevant documents
 In the event of discrepancy notify the Architect immediately
 This document is copyright of Hugh Cullum Architects Ltd

Issue Status
 SK Sketch
 D Design
 T Tender
 E Existing Condition
 P Permissions
 C Contract



(-): Issued for Planning (14.08.17/OA/HC)
 (-): Revision Information (00.00.02/AA/BB)
 Revision: Information (date/drawn by/checked by)

AS EXISTING _ Section BB



HUGH CULLUM
 ARCHITECTS LTD
 Bloomsbury Design
 61b Judd Street
 London WC1H 9QT
 t 020 7383 7647
 f 020 7387 7645
 mail@hughcullum.com

2 Provost Road
 Existing Condition
 Section BB
 1:50@A3 August 2017
PR002-E121(-)



AS EXISTING _ Section CC



General Notes
 Do not scale from this drawing
 All dimensions to be verified on site
 To be read in conjunction with all relevant documents
 In the event of discrepancy notify the Architect immediately
 This document is copyright of Hugh Cullum Architects Ltd

Issue Status

| | | | |
|----|--------|---|--------------------|
| SK | Sketch | E | Existing Condition |
| D | Design | P | Permissions |
| T | Tender | C | Contract |

(_): Issued for Planning (14.08.17/OA/HC)
 (_): Revision Information (00.00.02/AA/BB)
 Revision: Information (date/drawn by/checked by)

HUGH CULLUM **2 Provost Road**
 ARCHITECTS LTD
 Bloomsbury Design Existing Condition
 61b Judd Street Section CC
 London WC1H 9QT 1:50@A3 August 2017
 t 020 7383 7647
 f 020 7387 7645
 mail@hughcullum.com PR002-E122(_)



AS EXISTING _ Section DD



General Notes
 Do not scale from this drawing
 All dimensions to be verified on site
 To be read in conjunction with all relevant documents
 In the event of discrepancy notify the Architect immediately
 This document is copyright of Hugh Cullum Architects Ltd

Issue Status

| | | | |
|----|--------|---|--------------------|
| SK | Sketch | E | Existing Condition |
| D | Design | P | Permissions |
| T | Tender | C | Contract |

(-): Issued for Planning (14.08.17/OA/HC)
 (-): Revision Information (00.00.02/AA/BB)
 Revision: Information (date/drawn by/checked by)

HUGH CULLUM **2 Provost Road**
 ARCHITECTS LTD
 Bloomsbury Design Existing Condition
 61b Judd Street Section DD
 London WC1H 9QT 1:50@A3 August 2017
 t 020 7383 7647
 f 020 7387 7645
 mail@hughcullum.com PR002-E123(-)



General Notes
 Do not scale from this drawing
 All dimensions to be verified on site
 To be read in conjunction with all relevant documents
 In the event of discrepancy notify the Architect immediately
 This document is copyright of Hugh Cullum Architects Ltd

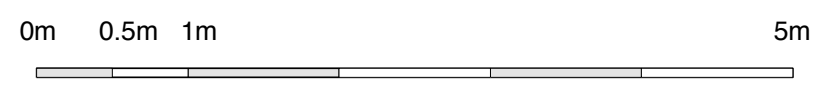
Issue Status

| | | | |
|----|--------|---|--------------------|
| SK | Sketch | E | Existing Condition |
| D | Design | P | Permissions |
| T | Tender | C | Contract |

(): Issued for Planning (14.08.17/OA/HC)
 (): Revision Information (00.00.02/AA/BB)
 Revision: Information (date/drawn by/checked by)

IWER GROUND FLOOR LEVEL 000

AS EXISTING _ Front Elevation



HUGH CULLUM ARCHITECTS LTD
 Bloomsbury Design
 61b Judd Street
 London WC1H 9QT
 t 020 7383 7647
 f 020 7387 7645
 mail@hughcullum.com

2 Provost Road
 Existing Condition
 Front Elevation
 1:50@A3 August 2017
 PR002-E124()



General Notes
 Do not scale from this drawing
 All dimensions to be verified on site
 To be read in conjunction with all relevant documents
 In the event of discrepancy notify the Architect immediately
 This document is copyright of Hugh Cullum Architects Ltd

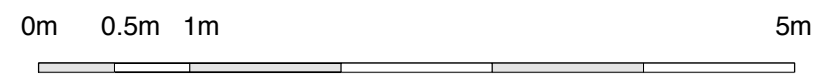
Issue Status

| | | | |
|----|--------|---|--------------------|
| SK | Sketch | E | Existing Condition |
| D | Design | P | Permissions |
| T | Tender | C | Contract |

(_) : Issued for Planning (14.08.17/OA/HC)
 (.) : Revision Information (00.00.02/AA/BB)
 Revision: Information (date/drawn by/checked by)

HUGH CULLUM ARCHITECTS LTD **2 Provost Road**
 Bloomsbury Design Existing Condition
 61b Judd Street Side Elevation
 London WC1H 9QT 1:50@A3 August 2017
 t 020 7383 7647
 f 020 7387 7645
 mail@hughcullum.com **PR002-E125()**

AS EXISTING _ Side Elevation



General Notes
 Do not scale from this drawing
 All dimensions to be verified on site
 To be read in conjunction with all relevant documents
 In the event of discrepancy notify the Architect immediately
 This document is copyright of Hugh Cullum Architects Ltd

Issue Status

| | | | |
|----|--------|---|--------------------|
| SK | Sketch | E | Existing Condition |
| D | Design | P | Permissions |
| T | Tender | C | Contract |

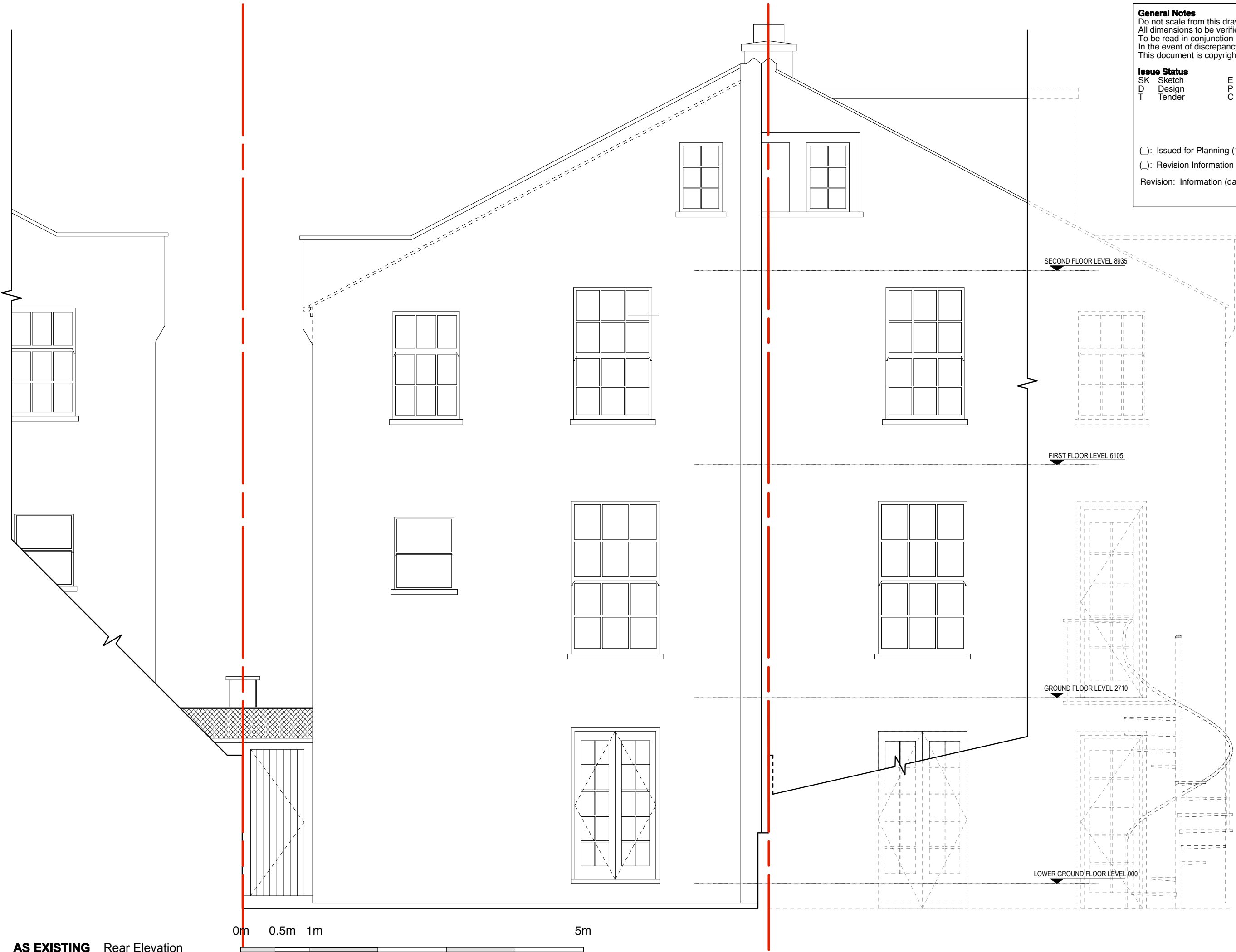
(-): Issued for Planning (14.08.17/OA/HC)
 (-): Revision Information (00.00.02/AA/BB)
 Revision: Information (date/drawn by/checked by)

2 Provost Road

Existing Condition
 Rear Elevation
 1:50@A3 August 2017

PR002-E126(-)

HUGH CULLUM
 ARCHITECTS LTD
 Bloomsbury Design
 61b Judd Street
 London WC1H 9QT
 t 020 7383 7647
 f 020 7387 7645
 mail@hughcullum.com



AS EXISTING _ Rear Elevation