

SURFACE WATER DRAINAGE PROPOSALS:

- THE EXISTING SURFACE WATER DRAINAGE SYSTEM SERVING THE SITE IS A GRAVITY SYSTEM DISCHARGING DIRECTLY TO THE PUBLIC SURFACE WATER SEWER IN FALKLANDS ROAD (REFER TO DRAWING No. L616/0557/P/0001).
- THE PROPOSED HARDSTANDING AREA DOES NOT ALTER FROM THE EXISTING (IE 254m²), THEREFORE THERE IS NO INCREASE IN SURFACE WATER RUN-OFF TO THE PUBLIC SEWER.
- THE NEW SURFACE WATER DRAINAGE IS PARTLY PUMPED FROM BASEMENT AND PARTLY GRAVITY, DISCHARGING TO THE OUTFALL (DEMARICATION) CHAMBER F2 AT THE BOUNDARY OF THE SITE.
- A REDUCED/RESTRICTED DISCHARGE RATE HAS BEEN PROVIDED BY LIMITING THE SW PUMP STATION TO 3 L/S (REFER TO "SURFACE WATER DRAINAGE STRATEGY STATEMENT" FOR EVIDENCE OF BETTERMENT).
- THE OUTFALL (DEMARICATION) CHAMBER ALSO RECEIVES FOUL WATER DISCHARGE, WITH A COMBINED NEW OUTFALL CONNECTING TO THE PUBLIC SEWER IN FALKLAND ROAD.

FOUL WATER DRAINAGE PROPOSALS:

- THE NEW FOUL WATER DRAINAGE SYSTEM IS PUMPED FROM BASEMENT LEVEL, DISCHARGING TO THE OUTFALL (DEMARICATION) CHAMBER F2 AT THE BOUNDARY OF THE SITE.
- THE PUMP DISCHARGE RATE IS 5 l/s WITH 24 HOURS ON-SITE STORAGE PROVIDED IN ACCORDANCE WITH BUILDING REGULATIONS REQUIREMENTS.

SEWER NOTES

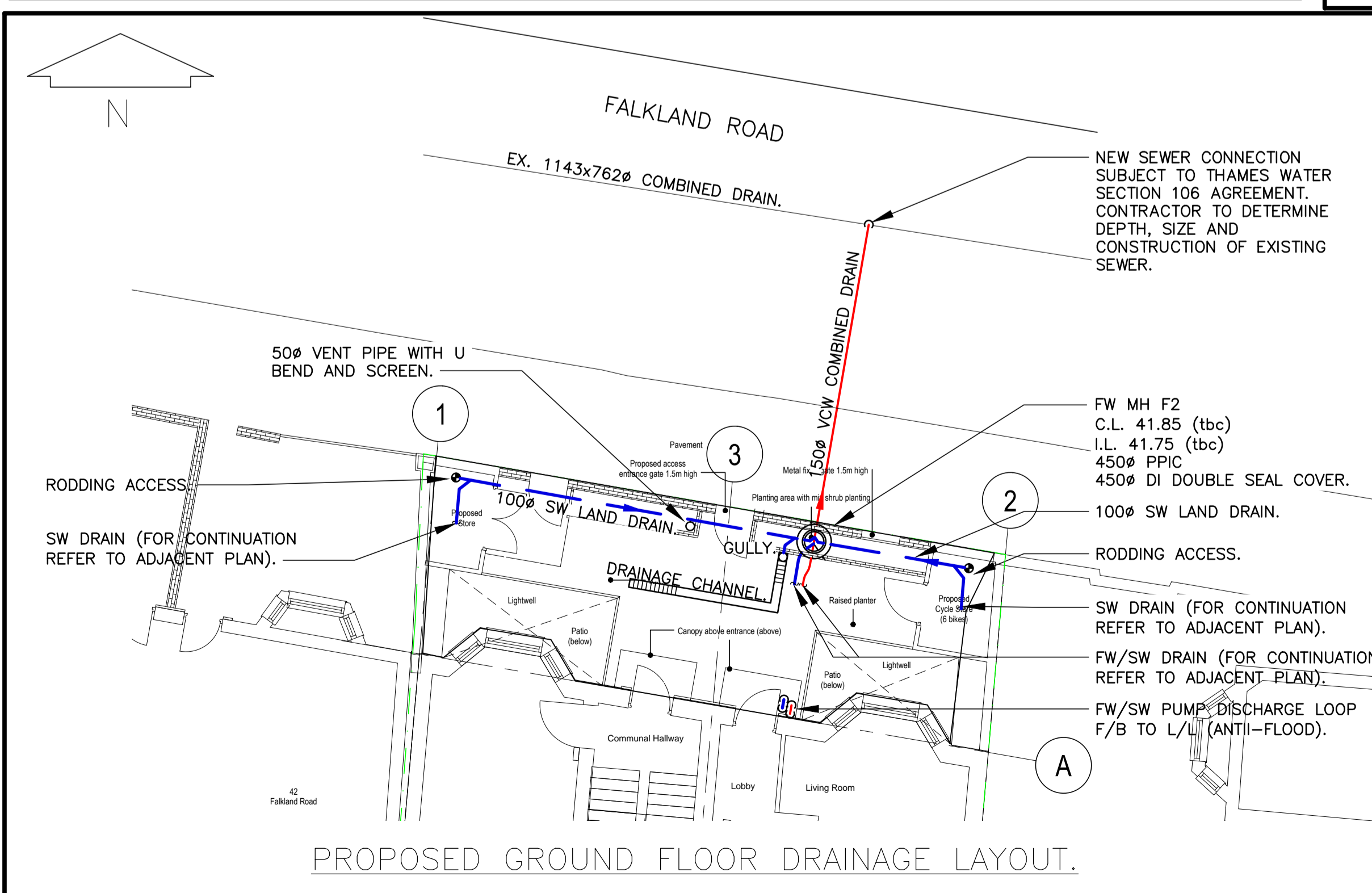
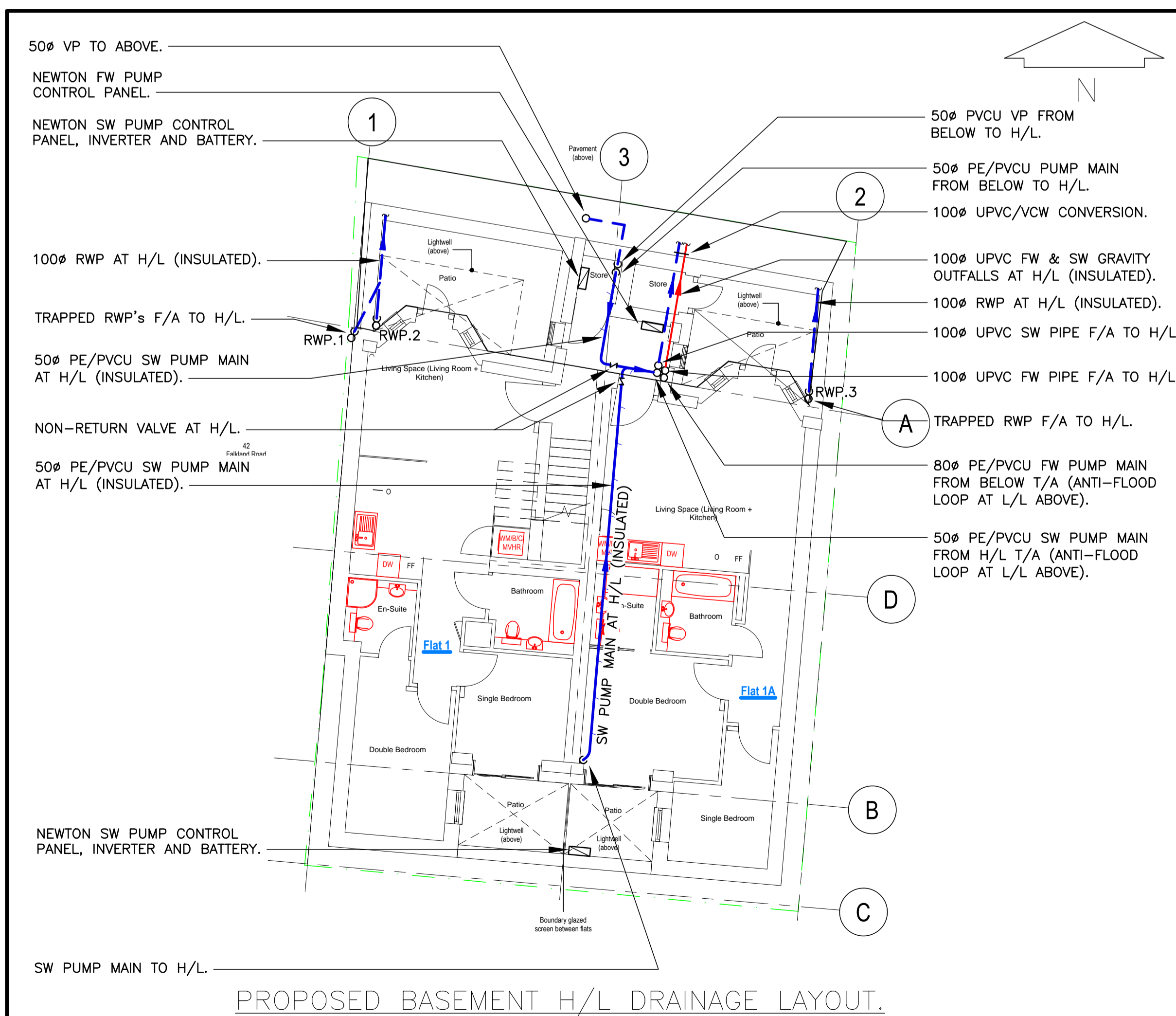
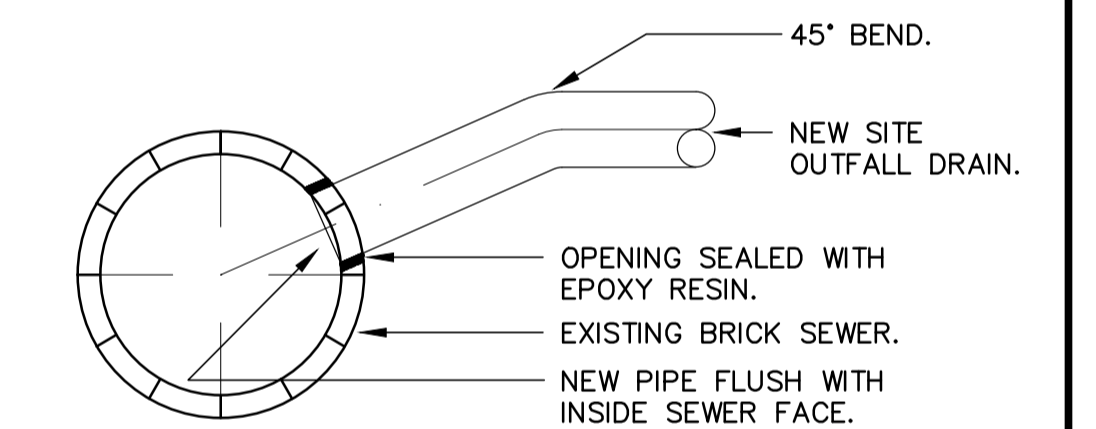
- CONTRACTOR TO LOCATE THE PRECISE LOCATION OF THE PUBLIC SEWER, DETERMINE DEPTH, SHAPE, SIZE & MATERIAL BY MEANS OF CCTV INSPECTION AND SURVEY WITH THAMES WATER, PRIOR TO WORKS.
- CONTRACTOR TO ESTABLISH THE EXACT DIMENSIONS OF THE SEWER PIPE WHICH SHOULD BE VERIFIED ON SITE BY CAREFUL INTERNAL & EXTERNAL MEASUREMENTS PRIOR TO CUTTING INTO THE SEWER.
- ALL CONNECTIONS TO THE PUBLIC SEWER MUST BE MADE AT LEVEL SOFFIT AND IN THE DIRECTION OF THE FLOW, UNLESS OTHERWISE DIRECTED BY THAMES WATER.
- CONTRACTOR TO CONTACT THAMES WATER GIVING ADEQUATE NOTICE PRIOR TO UNDERTAKING ANY EXCAVATION FOR THE SEWER CONNECTION.
- CONTRACTOR TO ARRANGE FOR MEETING WITH THAMES WATER IN ORDER TO DETERMINE THE MODE OF CONNECTION TO THE PUBLIC SEWER TO AGREE THE METHOD STATEMENT, TIMING AND CONSTRAINTS TO BE OBSERVED.
- CONTRACTOR TO AGREE WITH THAMES WATER LOCATION AND CONSTRUCTION OF DEMARICATION MANHOLE No. F2, MANHOLE COVER TO BE TO THAMES WATER SPECIFICATION.
- OUTFALL SEWER TO BE VCW LAID TO GRADIENT AND CONNECT TO PUBLIC SEWER IN MANNER DIRECTED BY THAMES WATER.
- ALL PERSONNEL WORKING ON PUBLIC SEWER CONNECTION TO HAVE CURRENT CONFINED SPACE CERTIFICATION AND BE ABLE TO DEMONSTRATE TO THE SATISFACTION OF THAMES WATER EVIDENCE OF THEIR EXPERIENCE IN EXECUTING THESE WORKS.

SEQUENCE OF WORKS:

1. PREPARE RISK ASSESSMENT AND METHOD STATEMENT.
2. OBTAIN SECTION 50 STREETWORKS LICENSE.
3. IMPLEMENT APPROVED TRAFFIC MANAGEMENT SYSTEM (AS APPLICABLE).
4. CAT SCAN AND/OR FORM TRIAL PITS TO ESTABLISH EXTENT AND LOCATION OF EXISTING SERVICES IN THE VICINITY.
5. EXCAVATE AROUND THE SEWER BY HAND DIGGING TO EXPOSE THE AREA OF THE PROPOSED CONNECTION.
6. OPERATE CONFINED SPACE ENTRY SYSTEM TO TRENCH.
7. CORE DRILL INTO BRICK SEWER FOR NEW CONNECTION.
8. MEASURE SEWER PIPE THICKNESS AND MARK PIPE TO ENABLE PIPE TO BE INSERTED FLUSH WITH THE INSIDE FACE.
9. INSERT PIPE INTO HOLE, SEALING WITH EPOXY RESIN.
10. FACILITATE INSPECTION BY THAMES WATER INSPECTOR.
11. ON APPROVAL BY THAMES WATER INSPECTOR, CAREFULLY BACKFILL AND COMPACT.
12. MAKE GOOD SURFACE.
13. CLEAR SITE.

LEGEND

- CONCRETE RING MANHOLE.
- ⊙ INSPECTION CHAMBER.
- FOUL WATER DRAIN.
- SURFACE WATER DRAIN.
- RAINWATER PUMP MAIN.
- CONNECTION FROM NEWTON (CAVITY) BASEDRAIN SYSTEM COMPLETE WITH INSPECTION PORTS, INSTALLED TO MANUFACTURERS REQUIREMENTS (REFER TO NEWTON DRG No's CDM-P18B AND CDM-RA-03). NEWTON REGISTERED CONTRACTOR TO REVIEW AND FINALISE LAYOUT/SPECIFICATION.
- DP DRAIN POINT.
- OC BACK INLET GULLY.
- ▣ LIGHTWELL GULLY.



Rev	By	Chk'd	Date
C	NOTE AMENDED	AM	DR 14/08/17
B	LAND DRAINAGE OMITTED	AM	DR 02/04/17
A	ISSUED FOR INFORMATION	AM	DR 10/02/17

INFORMATION

Client: SOUL SPACE 2

Project: FALKLAND ROAD

Title: PROPOSED DRAINAGE LAYOUT

Job No.	Dwg No.	Rev
9540	SK1	C
Drawn by	Date	
ADM	JAN 17	
Checked by	Scale	
DMR	1:100 @ A1	

© Copyright belongs to GURNEY consulting engineers
Hallmark House, 10/12 St. Johns Rd, Woking, Surrey, GU21 7SE
tel: 01483 721721 fax: 01483 726073 e-mail: gce@gurneyce.com