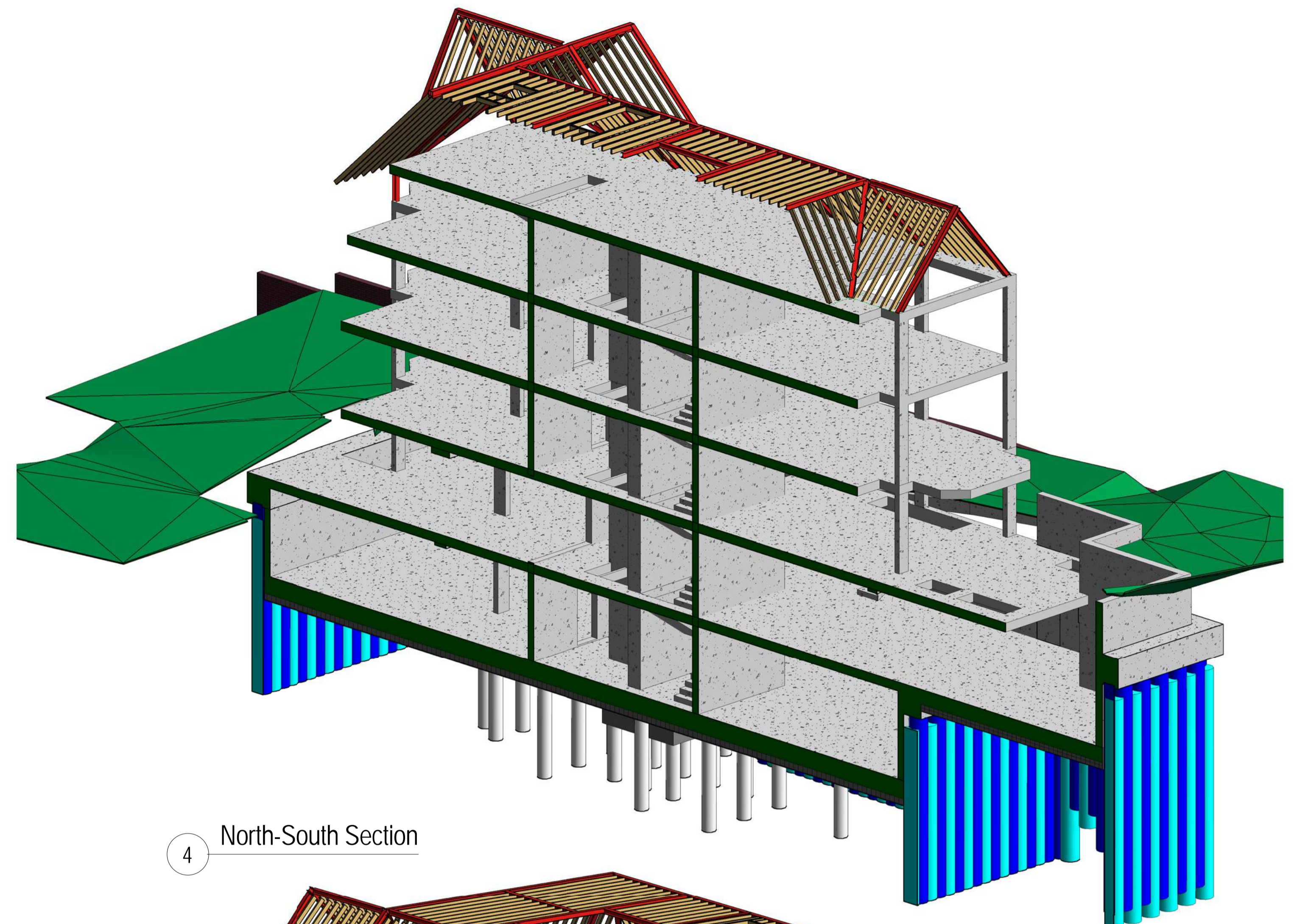
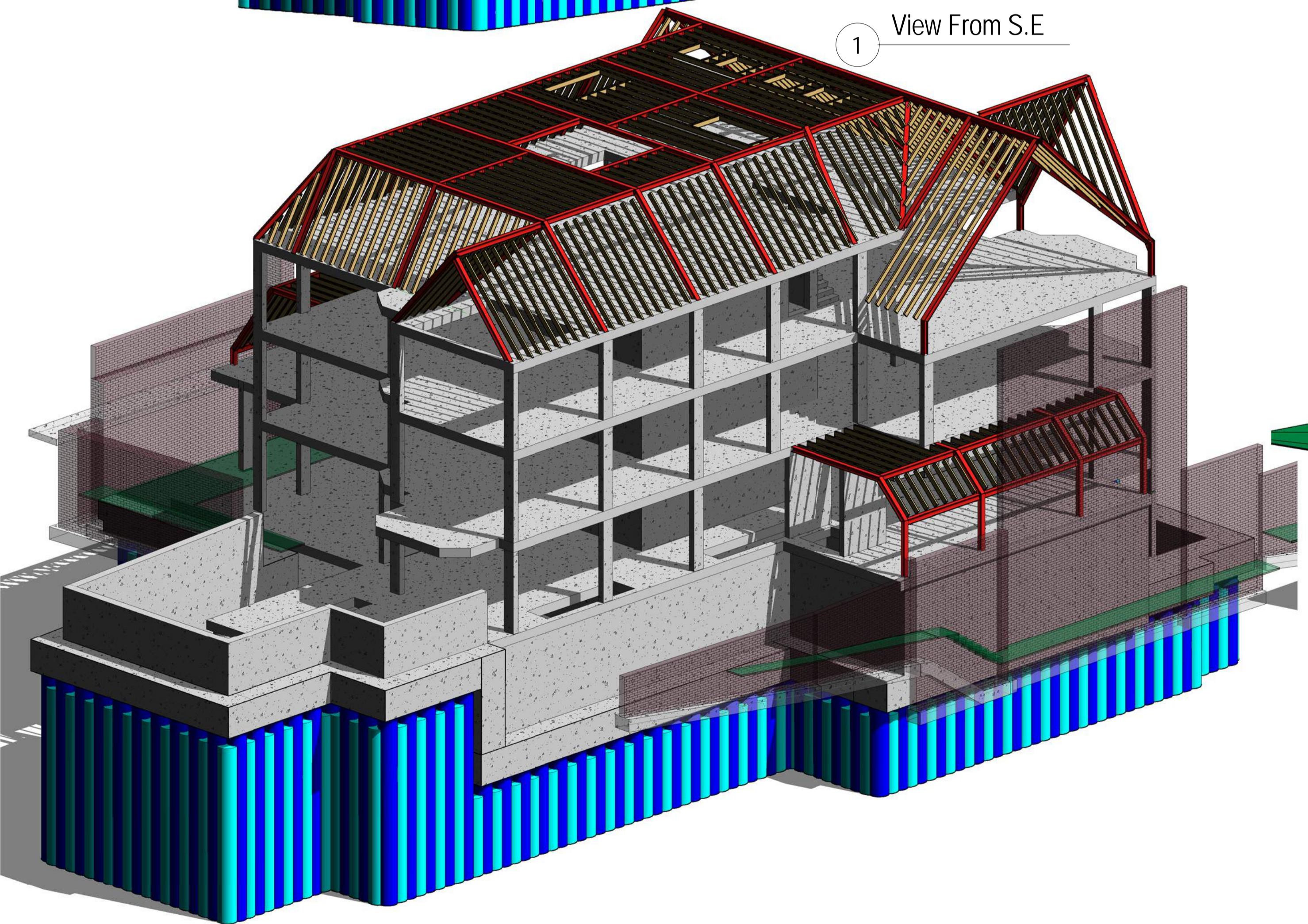


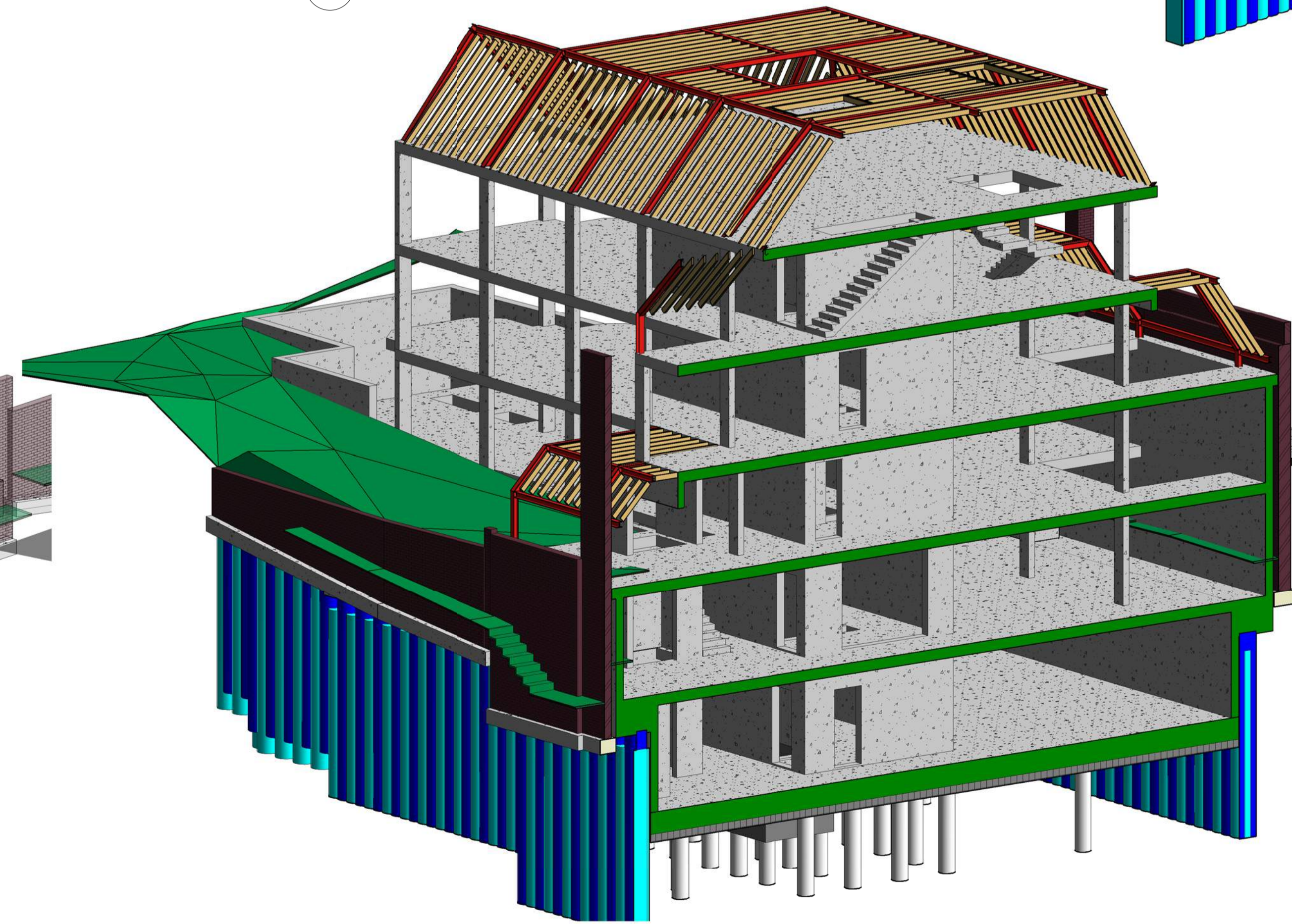
1 View From S.E



4 North-South Section



3 View From N.W



2 East-West Section

No.	By	Description	Date
CLIENT			
The Linton Group			
ARCHITECT			
Jo Cowen Architects			
M+E ENGINEER			
28 Redington Road London NW3			
Isometric Views			
ROSS & PARTNERS CONSULTING CIVIL & STRUCTURAL ENGINEERS 1 BASTWICK STREET LONDON EC1V 3NU Tel : (020)~7553-6050 Fax : (020)~7253-6720 email : mail@ross-partners.co.uk			
DRN: KS	CHKD: MO'R	DATE: August 2017	
STATUS: Planning		SCALE: @ A1	
Project No.	DRG. No.	Rev.	
11728/S/	S-20		