

## Existing external photographs



Existing external photographs



## Existing external photographs

Views from the gardens of 7 and 9 Hollycroft Avenue showing that the house is barely visible.



## Existing external photographs

View of the existing indented corner at upper and lower ground level.



## Existing external photographs

Views of the edge of the first floor flat roof and the view beyond



## Existing external photographs

View from the second floor of 21 Rosecroft and looking back from a window at 3 Hollycroft Avenue



## Existing internal photographs at lower ground level



At lower ground/garden level the indented corner shown below is infilled with a rear extension to create a kitchen/ dining/ family room that connects well to the garden.



## Existing internal photographs at upper ground level



Views of the upper ground level kitchen and dining room which are awkward due to the indented corner on plan.

The kitchen currently spills into the hallway across the stairway whereas if the kitchen window was pushed back to align with the dining room window, the space planning would be much improved and a proper lobby created to separate the kitchen from the escape route for the bedrooms above.



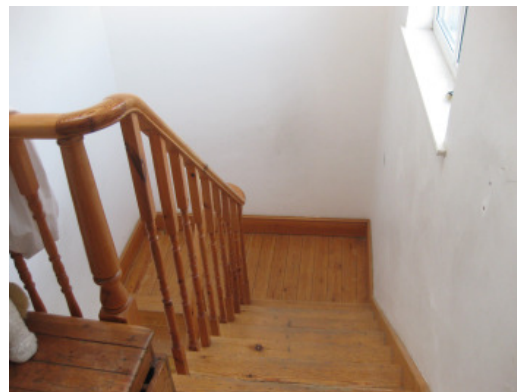


## Existing internal photographs at upper levels

Views of the stairwell and window at second floor, view out of the stair window and view of the second floor bathroom and it's rear window.



Above : view out of second floor bathroom  
Below : view of second floor landing with bathroom ahead



Above top : view out of second floor stair window  
Above and below : view of second floor stairwell

