

TYPICAL EXTERNAL WALL FINISHES



**Stock Red Brick with Flemish bond**  
Swanage metric light stock  
By Ibstock



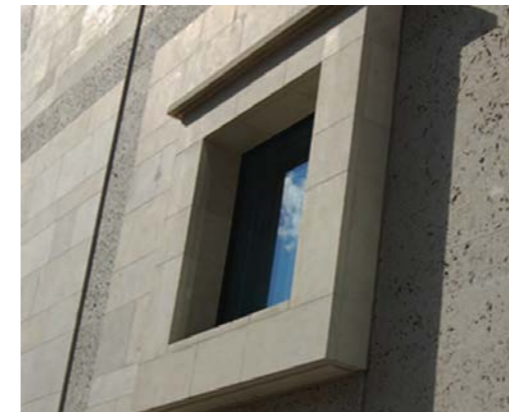
**Pre-patinated metal cladding**  
Nordic-brass weathered  
By Aurubis or similar



**Natural Limestone**  
By API Stone or similar



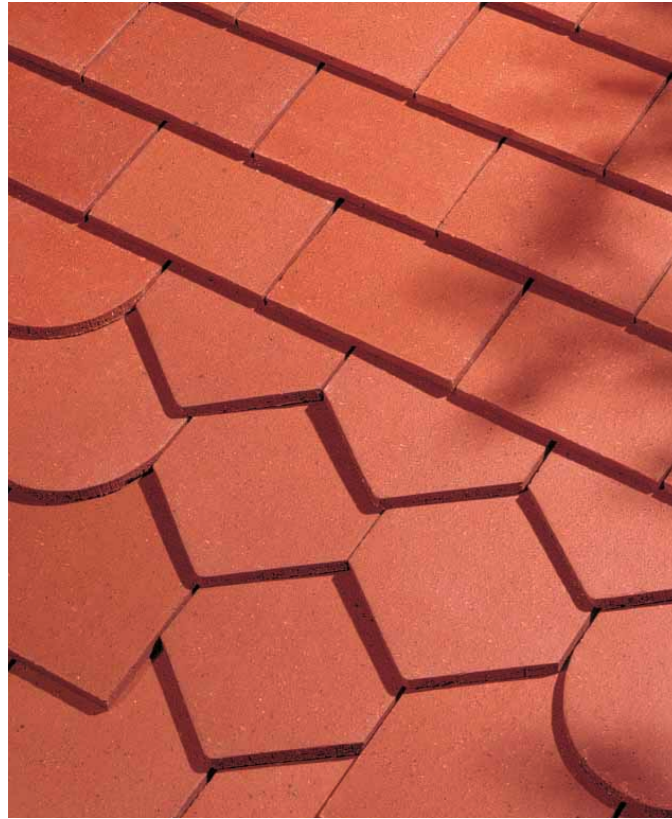
**Cladding Panels**  
Petraarch  
By CEP or similar



## TYPICAL ROOF FINISHES

### Plain clay tiles smoothfaced

Simple Plain Red  
By Dreadnought or similar

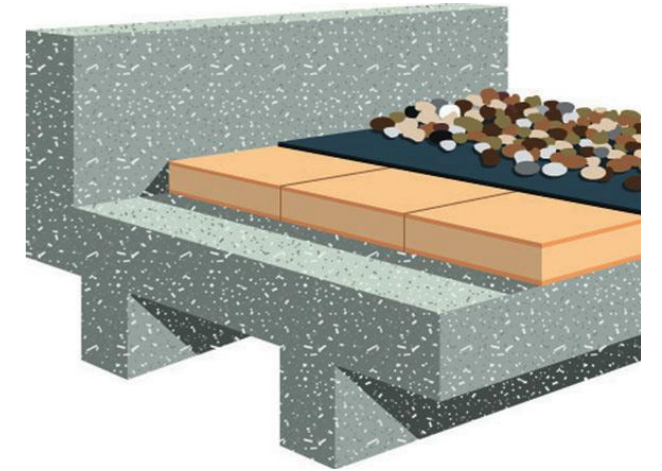


### Biodiversity Green Roof System

By Bauder or similar



### Stone Balast



### Concrete Pavers on Pedestals



**Kidderpore Avenue, London**  
Manufacturer's - Specification Details

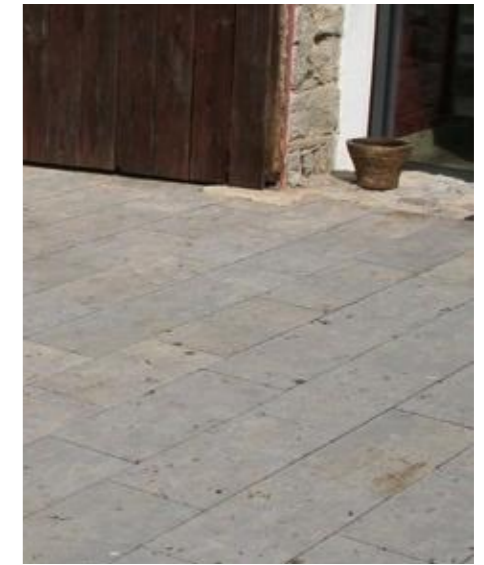
TYPICAL EXTERNAL FINISHES TO BALCONIES / TERRACES

**Balau Hardwood Timber Decking**

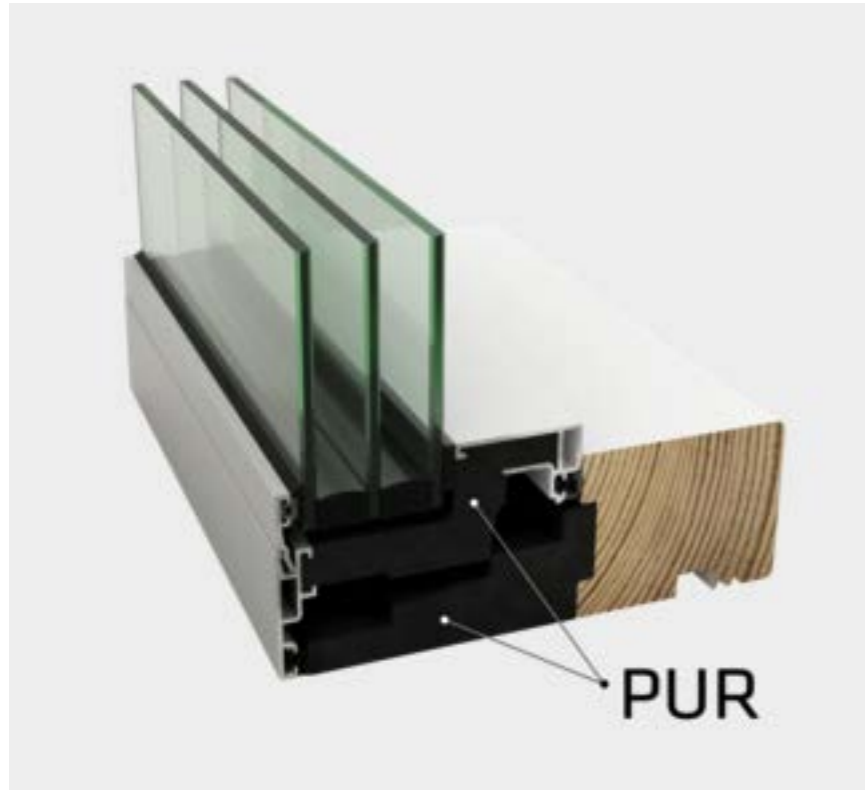


**Stone Paving Slabs**

Dietfurt Limestone  
By Franken Schotter or similar



## TYPICAL WINDOW TYPE



### **Futura + Side Guided Window** By Ideal Combi



#### USE

Side guided windows are used in all types of buildings but primarily in multi-story structures where cleaning can only be achieved from the inside of the building.

#### FUNCTION

Side guided windows are fitted with hinges, which allow easy access from the structure unlike the traditional hinged jamb. Sashes between 300-449 mm width opens 85°, and between 450-838 mm width opens 60°. The gap created allows cleaning from inside of the building. The sash is held shut by a single handle that operates a multi-locking point hook bolt system with a night vent position. Friction slides in the head and sill maintains the open position. A floating mullion is available on windows used in pairs for maximum opening widths, the master leaf is operated by a handle and the slave leaf is held by flush bolts.

#### INFO

Frame: 50 x 149 mm  
DGU: 4-20-4 energy glazing  
TGU: 4-14-3-13-4 energy glazing  
Styling bar options: 22 / 53 or 116 mm

NOTE:  
Hidden Discreet Trickle Vent through the frame where applicable

## TYPICAL EXTERNAL DOOR TYPES 1

### **Futura + I Inward opening terrace door**

By Ideal Combi

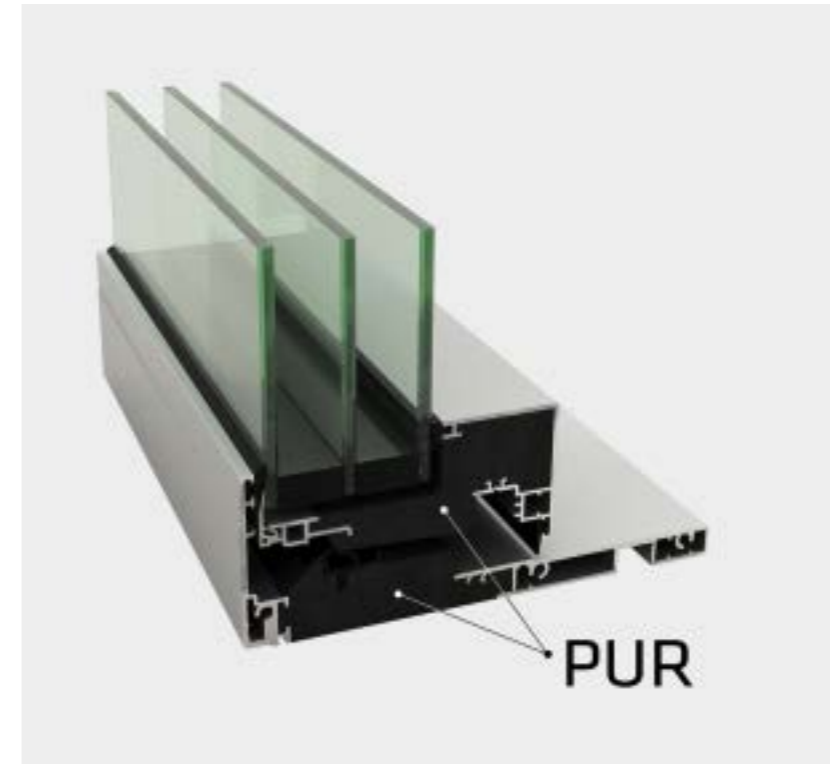


#### Use

Inward tilt before turn doors are for direct access to terraces, balconies and are essential for Juliet & French balconies where space is limited. The tilt function of the door allows for optimum ventilation, for example kitchens and bedrooms.

#### Function

The tilt-turn terrace door is inward opening with both a side and bottom hung function. Both opening functions are controlled by the same espagnolette mechanism controlled by a single handle on the side of the sash. When the door is closed, the handle is in the downwards position. The tilt (bottom hung) function is achieved by turning the handle 90° into the horizontal position and the side hung function by turning the handle to the 180° upright vertical position. When using the tilt function the top rail of the sash opens 10-15 cm inwards with a free opening of approx. 20 mm depending on the height of the sash.



### **Futura + Outward opening terrace door**

By Ideal Combi

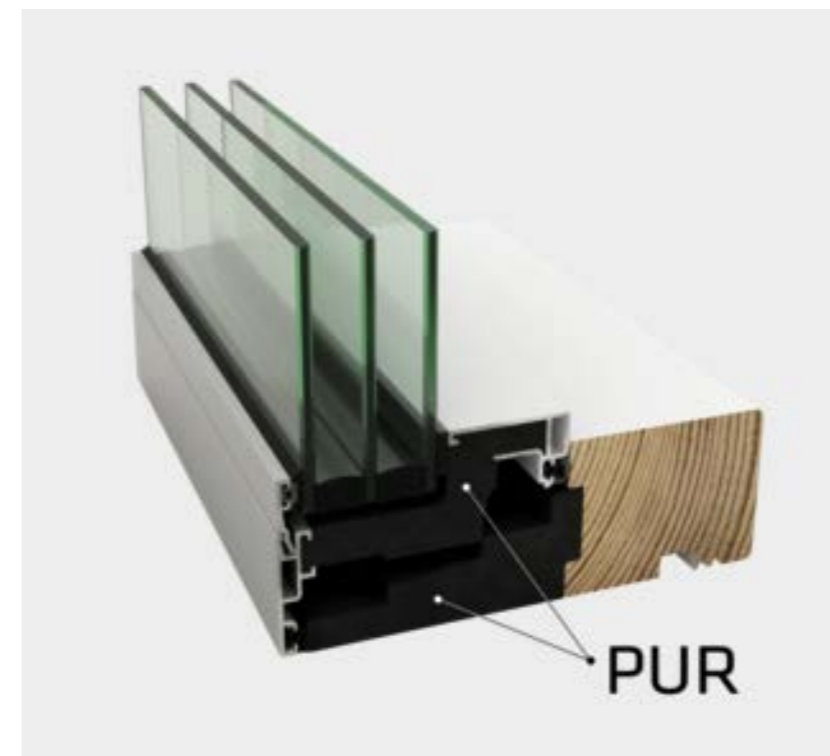


#### USE

The outward opening terrace door is used in all types of buildings to access a terrace, patio or spacious balcony. It is suitable for rooms with minimal space and is the preferred choice for fire exits with a non-locking handle.

#### FUNCTION

The doors are side hung with concealed hinges and are locked with a single handle on the inside that operates a multi-locking point mushroom bolt mechanism with a night vent position. These doors are available with glazing bars, styling bars or panels as required. Double doors have a French casement floating-mullion. A 15 mm. low threshold is available with this door.



#### NOTE:

Hidden Discreet Trickle Vent through the frame where applicable

## TYPICAL EXTERNAL DOOR TYPES 2

### Entrance Flush door with vertical grooves

Model IC28  
By Ideal Combi



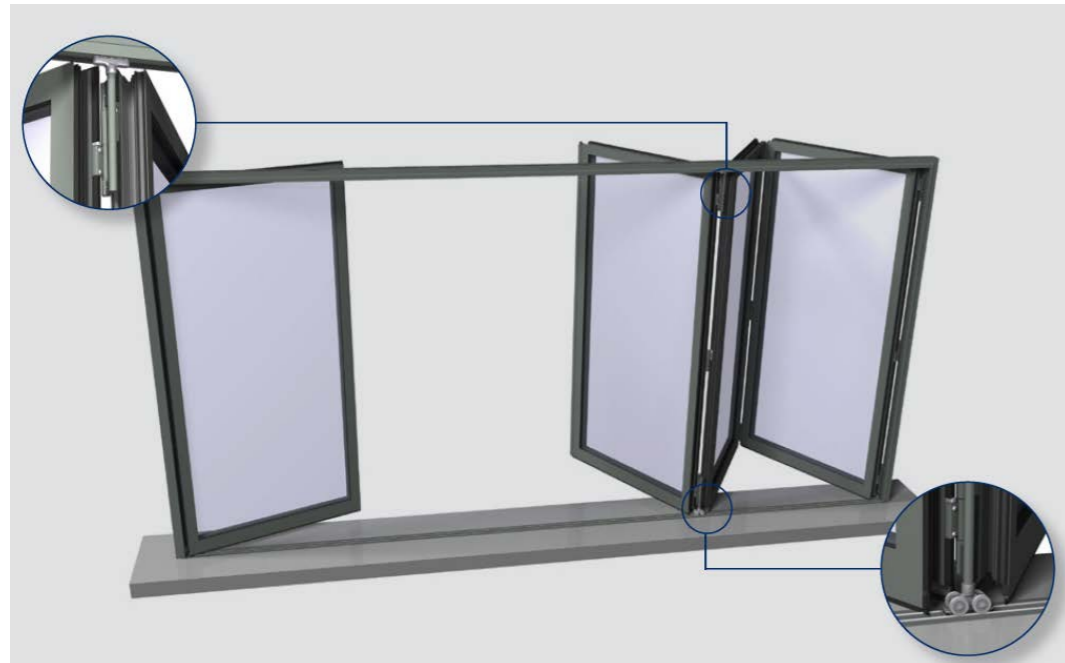
### Carpark Entrance Gate

By Eagle Automation Systems or similar



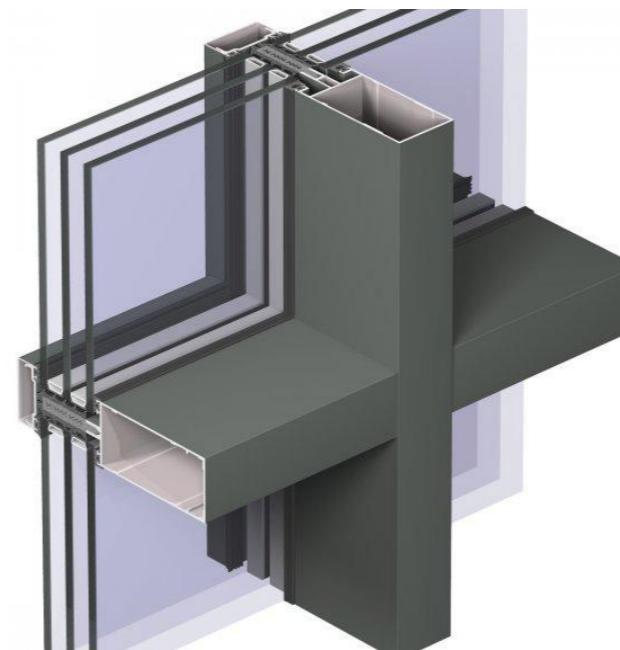
### Bi-Fold Doors

CS77  
By Reynaers or similar



### Curtain Walling with Doors

CW50  
By Reynaers or similar



**Kidderpore Avenue, London**

Manufacturer's - Specification Details

## TYPICAL ROOFLIGHTS

### **Walk-on Type**

By Glazing Vision or similar



### **Hinged Type**

By Glazing Vision or similar



### **Fixed Type**

By Glazing Vision or similar



### **Hinged Type (Roof Access)**

By Glazing Vision or similar



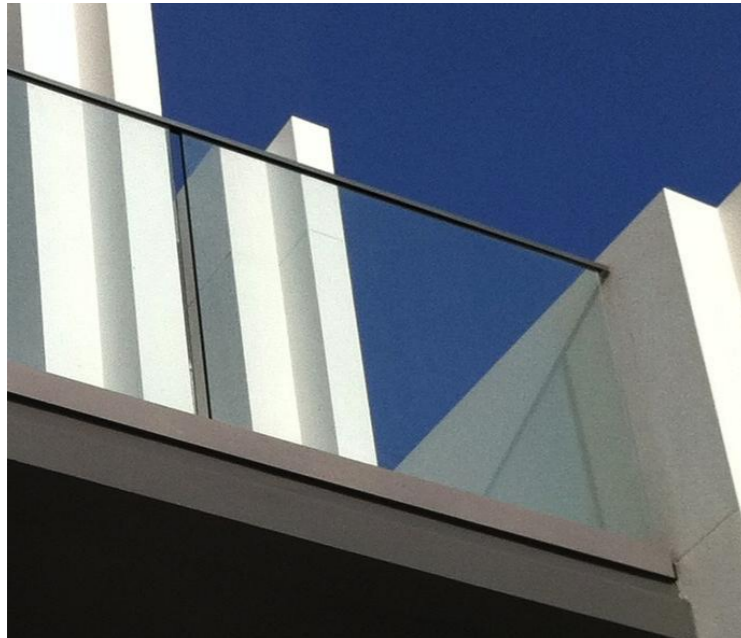
**Kidderpore Avenue, London**

Manufacturer's - Specification Details

## MISC EXTERNAL ITEMS

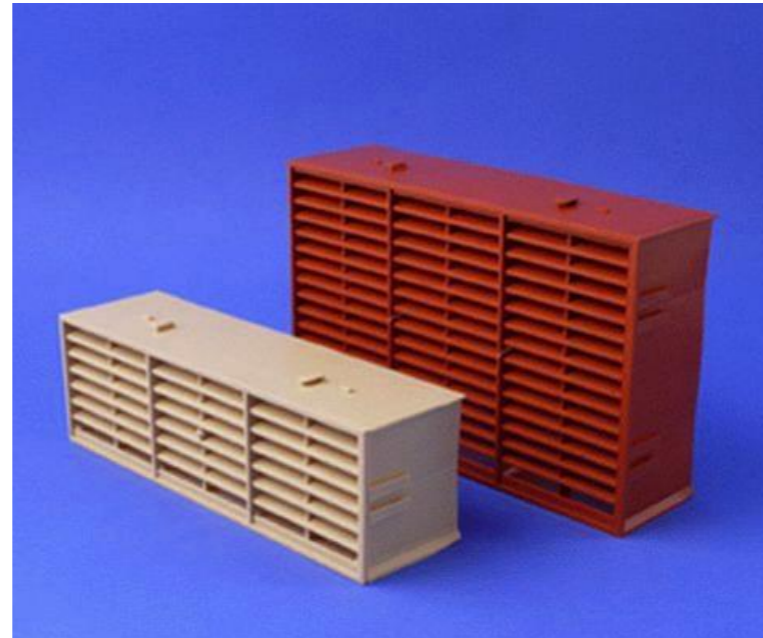
### Structural Glass Balustrade

Icon View  
By HandrailDesign or similar  
Top Rail colour RAL 7008



### AirBricks

Multifix Air Bricks '9x6  
By Rytons or similar  
Colour to match brick



### Tile Vent

Universal In-Line  
By Glidevale or similar



### Weep hole

Rytweep  
By Rytons or similar  
Colour to match mortar

