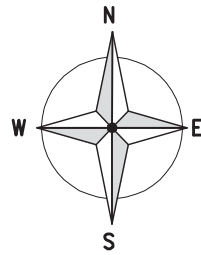


SITE LOCATION
(Scale 1:50000)

Ordnance Survey map extract based upon Landranger map series with the permission of the controller of Her Majesty's Stationery Office
Mono Consultants Limited licence No. ES100017753
Crown copyright.

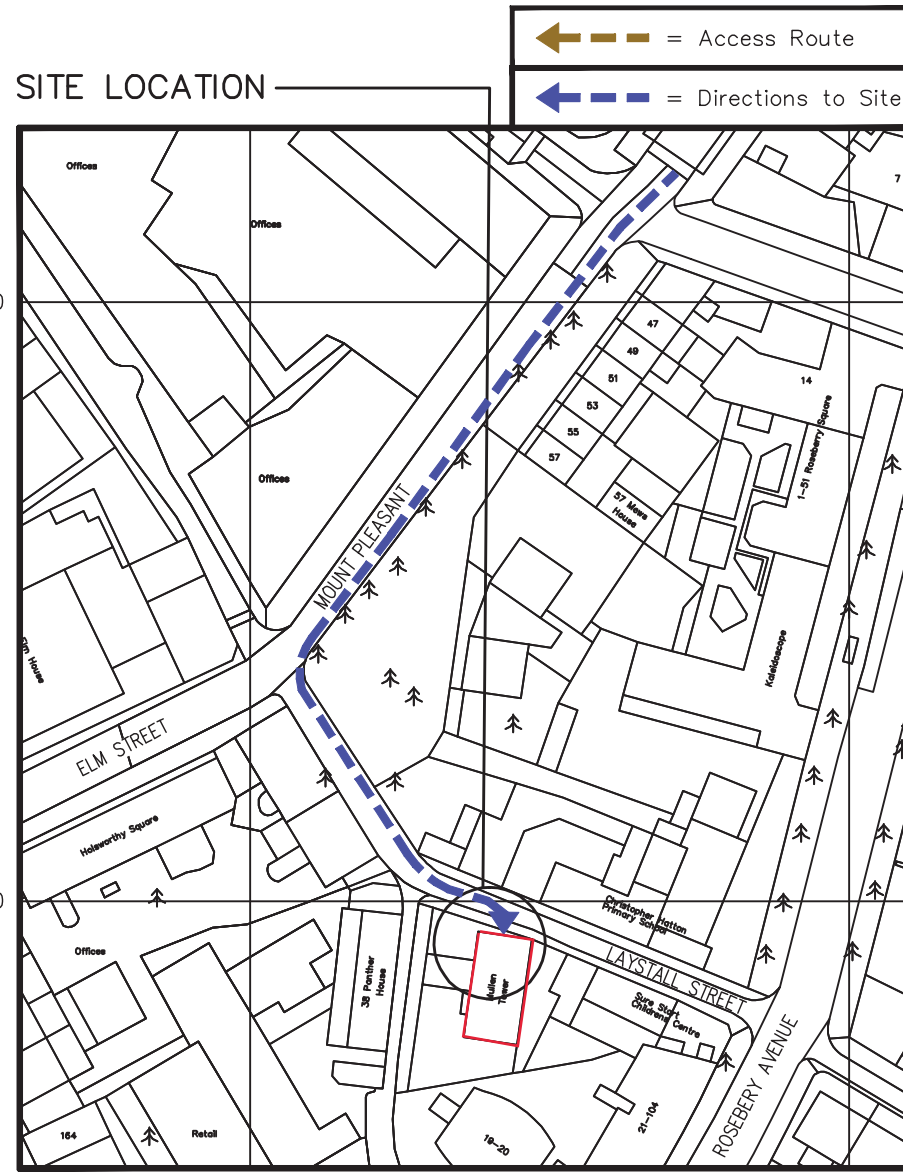


SITE PHOTOGRAPH



SITE LOCATION

SITE LOCATION



5310 00

5311 00

1822 00

1821 00

DETAILED SITE LOCATION
(Scale 1:1250)

Based upon Ordnance Survey map extract with the permission of the Controller of Her Majesty's Stationery Office.
Crown copyright.
Mono Consultants Limited licence No. ES100017753
Promap licence No. A152065A0001

Notes:

- 1 ALL DIMENSIONS ARE IN MM UNLESS NOTED OTHERWISE
- 2 DRAWING TO SCALE WHEN PRINTED AT A3

N.G.R. E: 531045 N: 182089

DIRECTIONS

TRAVELLING SOUTH ON THE M40. AT JUNCTION 1, TAKE THE SLOUGH EXIT ONTO A412/UXBRIDGE/A4020. TURN RIGHT ONTO DENHAM ROUNDABOUT. AT THE ROUNDABOUT, TAKE THE 1ST EXIT ONTO OXFORD ROAD/A4020. AT THE ROUNDABOUT, TAKE THE 1ST EXIT ONTO HAREFIELD ROAD/B4687. TURN LEFT ONTO PARK RD. AT SWAKELEYS ROUNDABOUT, TAKE THE 3RD EXIT ONTO THE A40 SLIP ROAD TO CENTRAL LONDON/HARROW. FOR 7 MILES FOLLOW SIGNS TO STAY ON A40. TAKE THE EXIT TOWARDS WHITE CITY. AT THE ROUNDABOUT, TAKE THE 1ST EXIT ONTO THE A40 SLIP ROAD. MERGE ONTO WESTWAY/A40. CONTINUE ONTO MARYLEBONE ROAD/A501. KEEP RIGHT TO CONTINUE ON EUSTON ROAD/A501. TAKE A SLIGHT RIGHT ONTO KING'S CROSS ROAD/A201. TURN RIGHT ONTO ROSEBERY AVENUE/A401. TURN RIGHT ONTO MOUNT PLEASANT. TURN LEFT ONTO LEYSTALL STREET. SITE IS ON THE RIGHT HAND SIDE.

B	Host/Sharer ID No. revised	BJ	AKB	02.05.17
A	Issued for Approval	MONO	PM	07.12.16
REV	MODIFICATION	BY	CH	DATE

mono #

MONO CONSULTANTS LIMITED
No. 58 Cygnet Court
Timothy's Bridge Road
Stratford-upon-Avon
Warwickshire
CV37 9NW
t. 44 (0)1789 206500
f. 44 (0)1789 206529
www.monoconsultants.com



Cell Name	Opt
MULLEN TOWERS	A

Cell ID No		
CTIL	Host	Sharer
147971_3	(VF) 79111	(TEF) 066490

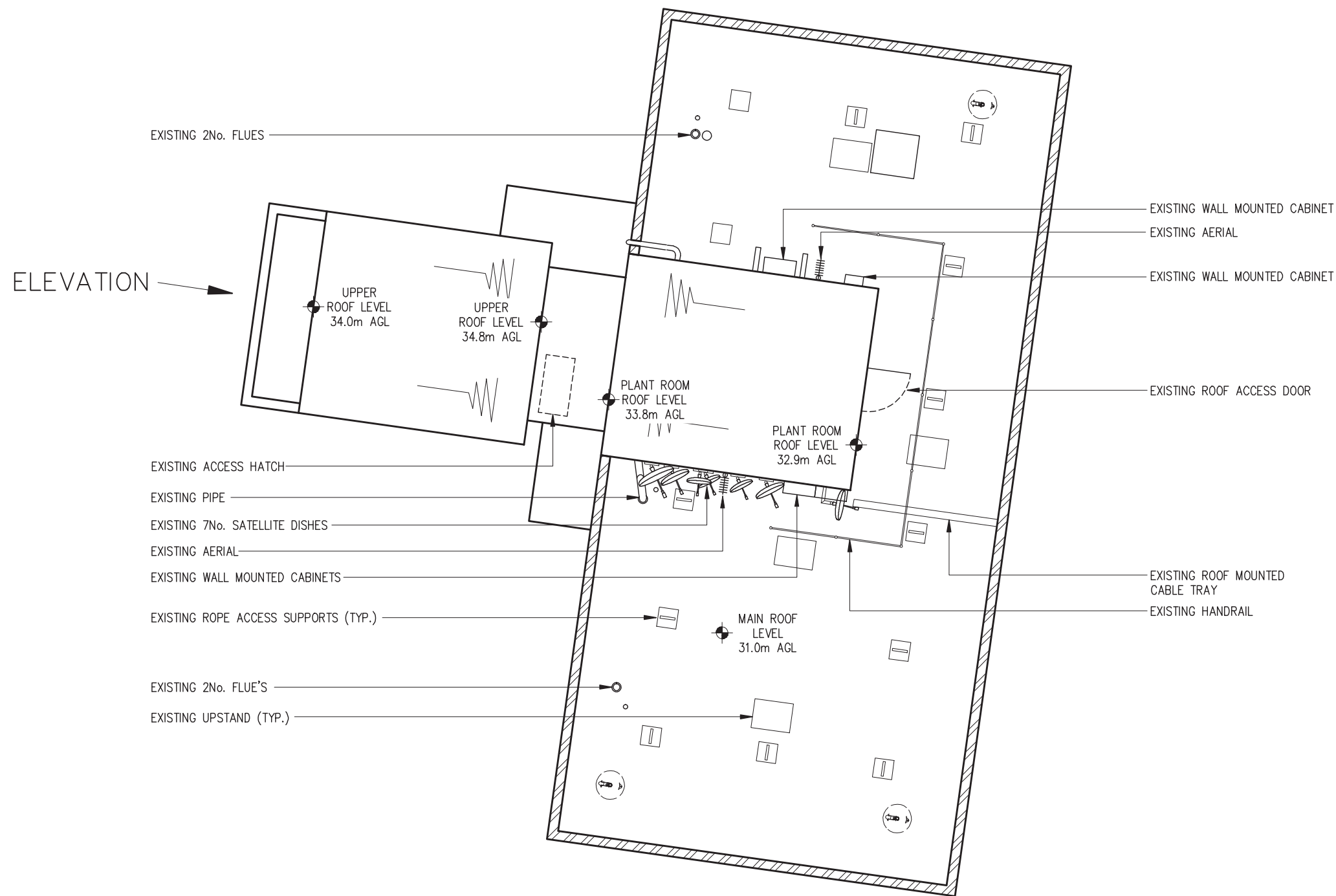
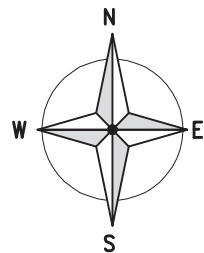
Site Address / Contact Details
85 MOUNT PLEASANT LONDON WC1X 0AG

Drawing Title: SITE LOCATION MAPS

Purpose of Issue: **PLANNING**

Drawing Number: 100

Scale:	As Shown	Drawn:	MONO	Date:	07.12.16	Issue:	B
Checked:	PM	Date:	07.12.16	Approved:	AB	Date:	07.12.16



EXISTING SITE PLAN
(1:100)

Notes:
1 ALL DIMENSIONS ARE IN MM UNLESS NOTED OTHERWISE
2 DRAWING TO SCALE WHEN PRINTED AT A3

N.G.R. | E: 531045 | N: 182089

B	Host/Sharer ID No. revised	BJ	AKB	02.05.17
A	Issued for Approval	MONO	PM	07.12.16
REV	MODIFICATION	BY	CH	DATE

mono #

MONO CONSULTANTS LIMITED
No. 58 Cygnet Court
Timothy's Bridge Road
Stratford-upon-Avon
Warwickshire
CV37 9NW
t. 44 (0)1789 206500
f. 44 (0)1789 206529
www.monoconsultants.com



Cell Name	Opt
MULLEN TOWERS	A

Cell ID No		
CTIL	Host	Sharer
147971_3	(VF) 79111	(TEF) 066490

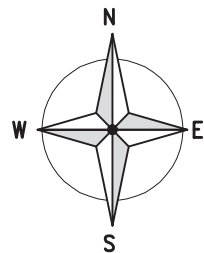
Site Address / Contact Details
85 MOUNT PLEASANT LONDON WC1X 0AG

Drawing Title: EXISTING SITE PLAN

Purpose of Issue: PLANNING

Drawing Number: 200

Scale: As Shown	Drawn: MONO	Date: 07.12.16	Issue: B
Checked: PM	Date: 07.12.16	Approved: AB	Date: 07.12.16



- PROPOSED 1No. CSC CABINET ON GRILLAGE SUPPORT
- PROPOSED 1No. RRU RACK ON GRILLAGE SUPPORT
- PROPOSED 1No. 300Ø DISH C/W ONE WAY OFFSET BRACKET & SUPPORT POLE
- PROPOSED 2No. C1 COMBINERS FIXED TO BRACING VIA UNISTRUT
- PROPOSED 2No. POLE MOUNTED ANTENNAS C/W MAFI 3270 OFFSET BRACKETS & 2No. CHS SUPPORT POLES ON 114.3Ø CHS SUPPORT POLE FIXED TO GRILLAGE. PROPOSED 2No. MHA'S FIXED TO REAR OF ANTENNA POLES

- PROPOSED 1No. ERS RACK ON GRILLAGE SUPPORT
- PROPOSED SECTION OF GRILLAGE TO BE LEFT UNCOVERED FOR EXISTING 2No. FLUE'S
- PROPOSED 2No. 42U O/D FLATPACK RACKS ON GRILLAGE SUPPORT

- PROPOSED 2No. 42U O/D FLATPACK RACKS ON GRILLAGE SUPPORT

- PROPOSED DISTRIBUTION BOARD WITHIN IP65 RATED ENCLOSURE FIXED TO WALL VIA UNISTRUT

- EXISTING PIPE
- EXISTING 7No. SATELLITE DISHES
- EXISTING AERIAL
- EXISTING WALL MOUNTED CABINETS
- EXISTING ROPE ACCESS SUPPORTS (TYP.)

- PROPOSED FREESTANDING HANDRAIL 1.1m HIGH AROUND PARAPET
- EXISTING 2No. FLUE'S
- PROPOSED 1No. RRU & 2No. VF ERS UNITS ON MAFI 4112 FREESTANDER LIGHT

- PROPOSED 2No. POLE MOUNTED ANTENNAS C/W MAFI 3270 OFFSET BRACKETS & 2No. CHS SUPPORT POLES ON TRIPOD SUPPORT FRAME

- EXISTING UPSTAND (TYP.)

- PROPOSED 2No. POLE MOUNTED ANTENNAS C/W MAFI 3270 OFFSET BRACKETS & 2No. CHS SUPPORT POLES ON TRIPOD SUPPORT FRAME

- PROPOSED 1No. RRU & 2No. ERS UNITS ON MAFI 4112 FREESTANDER LIGHT

- PROPOSED 2No. C1 COMBINERS ON MAFI 4112 FREESTANDER LIGHT

- PROPOSED 2No. POLE MOUNTED ANTENNAS C/W MAFI 3270 OFFSET BRACKETS & 2No. CHS SUPPORT POLES ON SUPPORT FRAME. PROPOSED 2No. MHA'S FIXED TO REAR OF ANTENNA POLES

- PROPOSED 1No. 300Ø DISH C/W ONE WAY OFFSET BRACKET & SUPPORT POLE

- EXISTING WALL MOUNTED CABINET

- EXISTING AERIAL

- EXISTING WALL MOUNTED CABINET

- PROPOSED LUMINAIRE MOUNTED ON WALL

- PROPOSED LUMINAIRE MOUNTED ON WALL

- EXISTING ROOF ACCESS DOOR

- PROPOSED 450 WIDE CABLE TRAY MOUNTED TO INSIDE OF PARAPET

- EXISTING ROOF MOUNTED CABLE TRAY

- EXISTING HANDRAIL

- PROPOSED 2No. POLE MOUNTED ANTENNAS C/W MAFI 3270 OFFSET BRACKETS & 2No. CHS SUPPORT POLES ON TRIPOD SUPPORT FRAME

- PROPOSED 1No. RRU & 2No. ERS UNITS FIXED ON MAFI 4112 FREESTANDER LIGHT

- PROPOSED 2No. C1 COMBINERS ON MAFI 4112 FREESTANDER LIGHT

- PROPOSED 2No. POLE MOUNTED ANTENNAS C/W MAFI 3270 OFFSET BRACKETS & 2No. CHS SUPPORT POLES ON SUPPORT FRAME. PROPOSED 2No. MHA'S FIXED TO REAR OF ANTENNA POLES

- PROPOSED 1No. 300Ø DISH C/W ONE WAY OFFSET BRACKET & SUPPORT POLE

PROPOSED SITE PLAN
(1:100)

Notes:

- 1 ALL DIMENSIONS ARE IN MM UNLESS NOTED OTHERWISE
- 2 DRAWING TO SCALE WHEN PRINTED AT A3

N.G.R. | E: 531045 | N: 182089

B	Host/Sharer ID No. revised	BJ	AKB	02.05.17
A	Issued for Approval	MONO	PM	07.12.16
REV	MODIFICATION	BY	CH	DATE

mono #

MONO CONSULTANTS LIMITED
No. 58 Cygnet Court
Timothy's Bridge Road
Stratford-upon-Avon
Warwickshire
CV37 9NW
t. 44 (0)1789 206500
f. 44 (0)1789 206529
www.monoconsultants.com



Cell Name	Opt
MULLEN TOWERS	A

Cell ID No		
CTIL	Host	Sharer
147971_3	(VF) 79111	(TEF) 066490

Site Address / Contact Details
85 MOUNT PLEASANT LONDON WC1X 0AG

Drawing Title: PROPOSED SITE PLAN

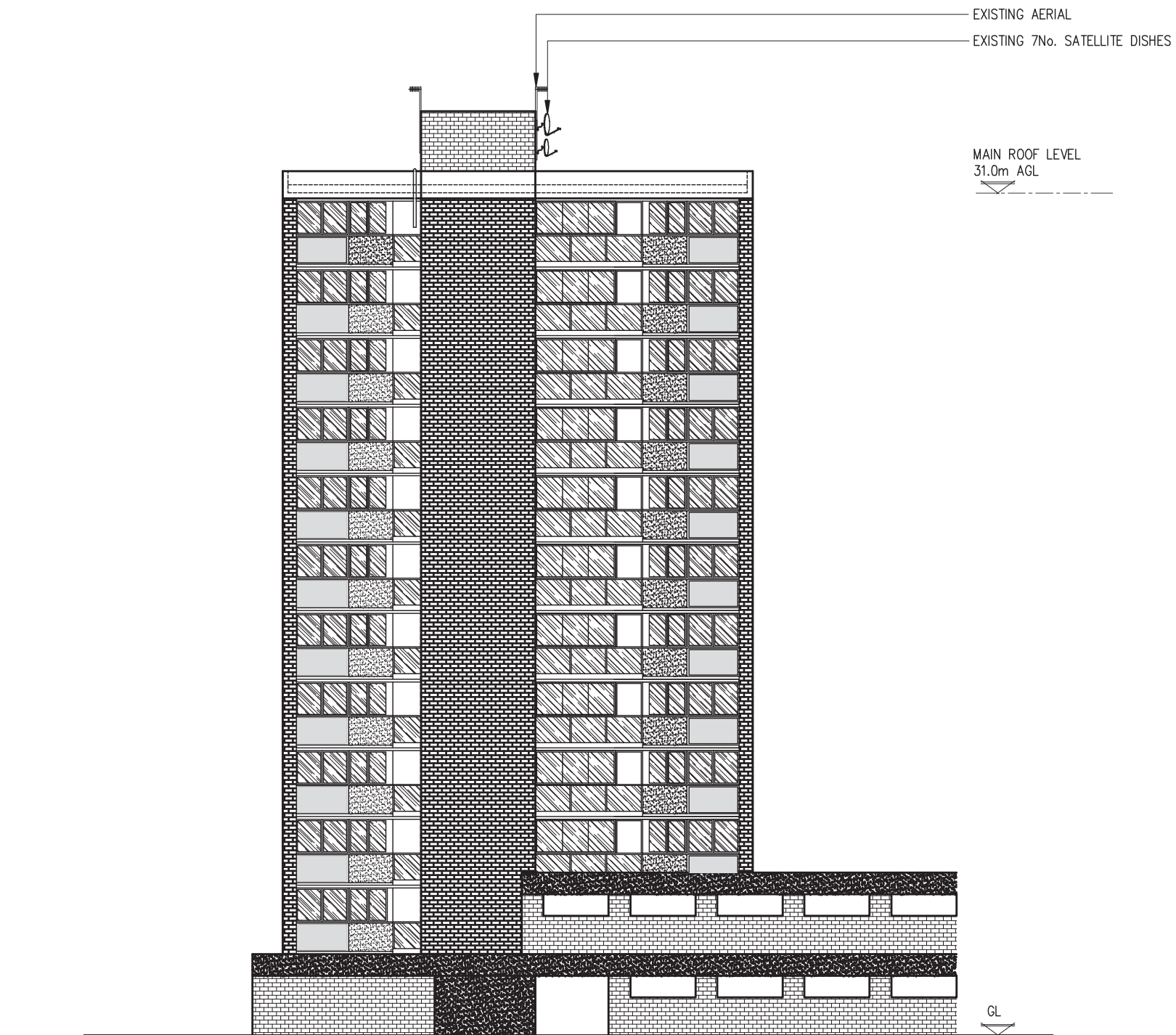
Purpose of Issue: **PLANNING**

Drawing Number: 201

Scale:	As Shown	Drawn:	MONO	Date:	07.12.16	Issue:	B
Checked:	PM	Date:	07.12.16	Approved:	AB	Date:	07.12.16

Notes:
 1 ALL DIMENSIONS ARE IN MM UNLESS NOTED OTHERWISE
 2 DRAWING TO SCALE WHEN PRINTED AT A3

N.G.R. | E: 531045 | N: 182089




EXISTING NORTH WEST ELEVATION
 (1:200)

The drawings comply with TEF & Vodafone **Non-Standard ICNIRP guidelines.**
 Designed in accordance with Cornerstone document: CORN/09/006

B	Host/Sharer ID No. revised	BJ	AKB	02.05.17
A	Issued for Approval	MONO	PM	07.12.16
REV	MODIFICATION	BY	CH	DATE

mono #

MONO CONSULTANTS LIMITED
 No. 58 Cygnet Court
 Timothy's Bridge Road
 Stratford-upon-Avon
 Warwickshire
 CV37 9NW
 t. 44 (0)1789 206500
 f. 44 (0)1789 206529
 www.monoconsultants.com



CTIL

Cell Name	Opt
MULLEN TOWERS	A

Cell ID No		
CTIL	Host	Sharer
147971_3	(VF) 79111	(TEF) 066490

Site Address / Contact Details

85 MOUNT PLEASANT
 LONDON
 WC1X 0AG

Drawing Title:
 EXISTING NORTH WEST ELEVATION

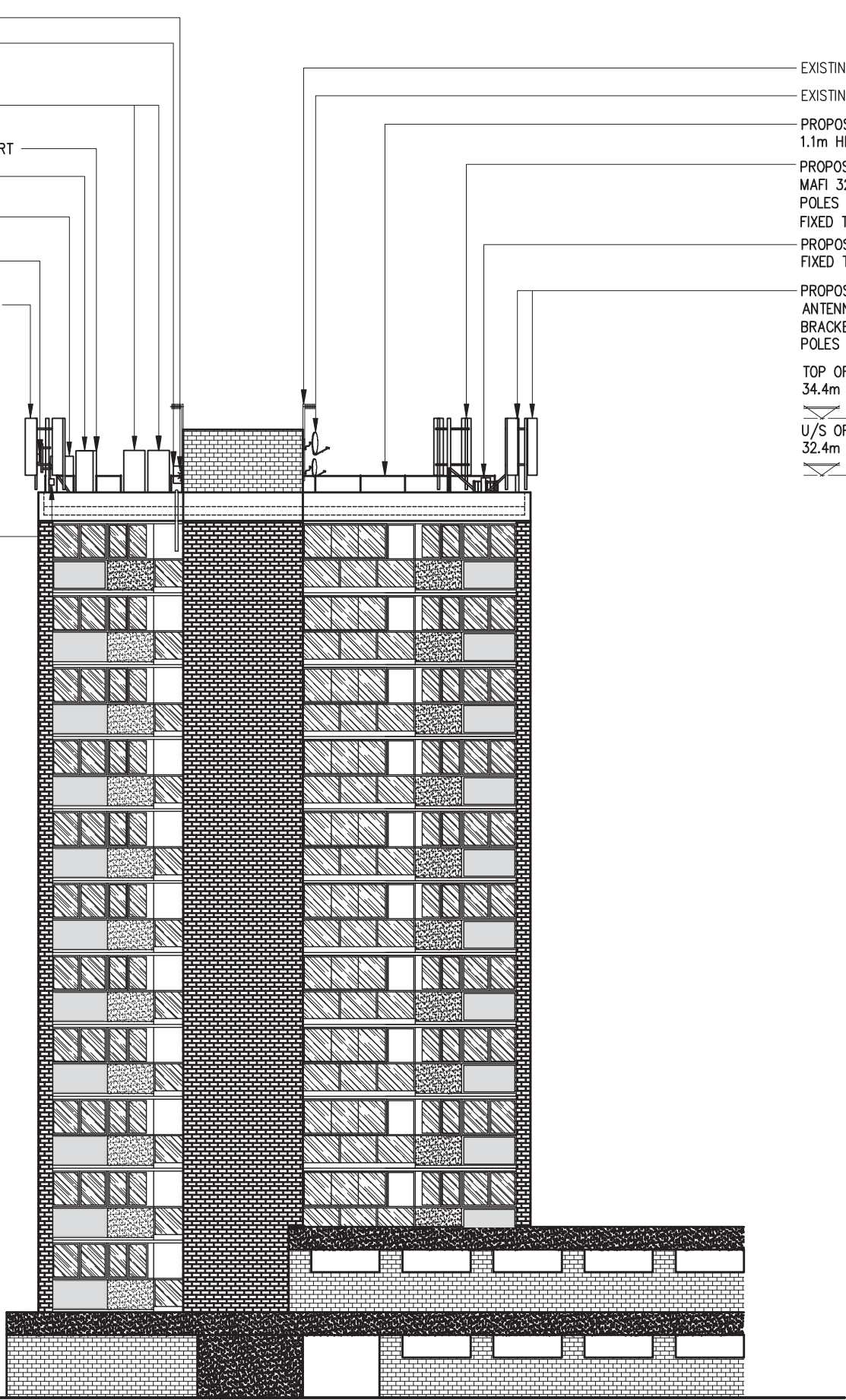
Purpose of Issue:
PLANNING

Drawing Number:
 300

Scale: As Shown	Drawn: MONO	Date: 07.12.16	Issue: B
Checked: PM	Date: 07.12.16	Approved: AB	Date: 07.12.16

PROPOSED LUMINAIRE MOUNTED ON WALL
 PROPOSED DISTRIBUTION BOARD WITHIN IP65 RATED ENCLOSURE FIXED TO WALL VIA UNISTRUT
 PROPOSED 2No. 42U O/D FLATPACK RACKS ON GRILLAGE SUPPORT
 PROPOSED 1No. RRU RACK ON GRILLAGE SUPPORT
 PROPOSED 1No. ERS RACK ON GRILLAGE SUPPORT
 PROPOSED 1No. CSC CABINET ON GRILLAGE SUPPORT
 PROPOSED 1No. 300Ø DISH C/W ONE WAY OFFSET BRACKET & SUPPORT POLE
 PROPOSED 2No. POLE MOUNTED ANTENNAS C/W MAFI 3270 OFFSET BRACKETS & 2No. CHS SUPPORT POLES ON 114.3Ø CHS SUPPORT POLE FIXED TO GRILLAGE. PROPOSED 2No. MHA'S FIXED TO REAR OF ANTENNA POLES
 C/L OF PROPOSED DISHES 33.0m AGL
 MAIN ROOF LEVEL 31.0m AGL
 PROPOSED 2No. C1 COMBINERS FIXED TO BRACING VIA UNISTRUT

EXISTING AERIAL
 EXISTING 7No. SATELLITE DISHES
 PROPOSED FREESTANDING HANDRAIL 1.1m HIGH AROUND PARAPET
 PROPOSED 2No. POLE MOUNTED ANTENNAS C/W MAFI 3270 OFFSET BRACKETS & 2No. CHS SUPPORT POLES ON SUPPORT FRAME. PROPOSED 2No. MHA'S FIXED TO REAR OF ANTENNA POLES (BEHIND)
 PROPOSED 1No. RRU & 2No. ERS UNITS FIXED TO BRACING VIA UNISTRUT
 PROPOSED 2No. POLE MOUNTED ANTENNAS C/W MAFI 3270 OFFSET BRACKETS & 2No. CHS SUPPORT POLES ON TRIPOD SUPPORT FRAME
 TOP OF PROPOSED ANTENNAS 34.4m AGL
 U/S OF PROPOSED ANTENNAS 32.4m AGL



GL

PROPOSED NORTH WEST ELEVATION
 (1:200)

Notes:
 1 ALL DIMENSIONS ARE IN MM UNLESS NOTED OTHERWISE
 2 DRAWING TO SCALE WHEN PRINTED AT A3

N.G.R. E: 531045 N: 182089

B	Host/Sharer ID No. revised	BJ	AKB	02.05.17
A	Issued for Approval	MONO	PM	07.12.16
REV	MODIFICATION	BY	CH	DATE

mono #

MONO CONSULTANTS LIMITED
 No. 58 Cygnet Court
 Timothy's Bridge Road
 Stratford-upon-Avon
 Warwickshire
 CV37 9NW
 t. 44 (0)1789 206500
 f. 44 (0)1789 206529
 www.monoconsultants.com



Cell Name	Opt
MULLEN TOWERS	A

Cell ID No		
CTIL	Host	Sharer
147971_3	(VF) 79111	(TEF) 066490

Site Address / Contact Details

85 MOUNT PLEASANT
 LONDON
 WC1X 0AG

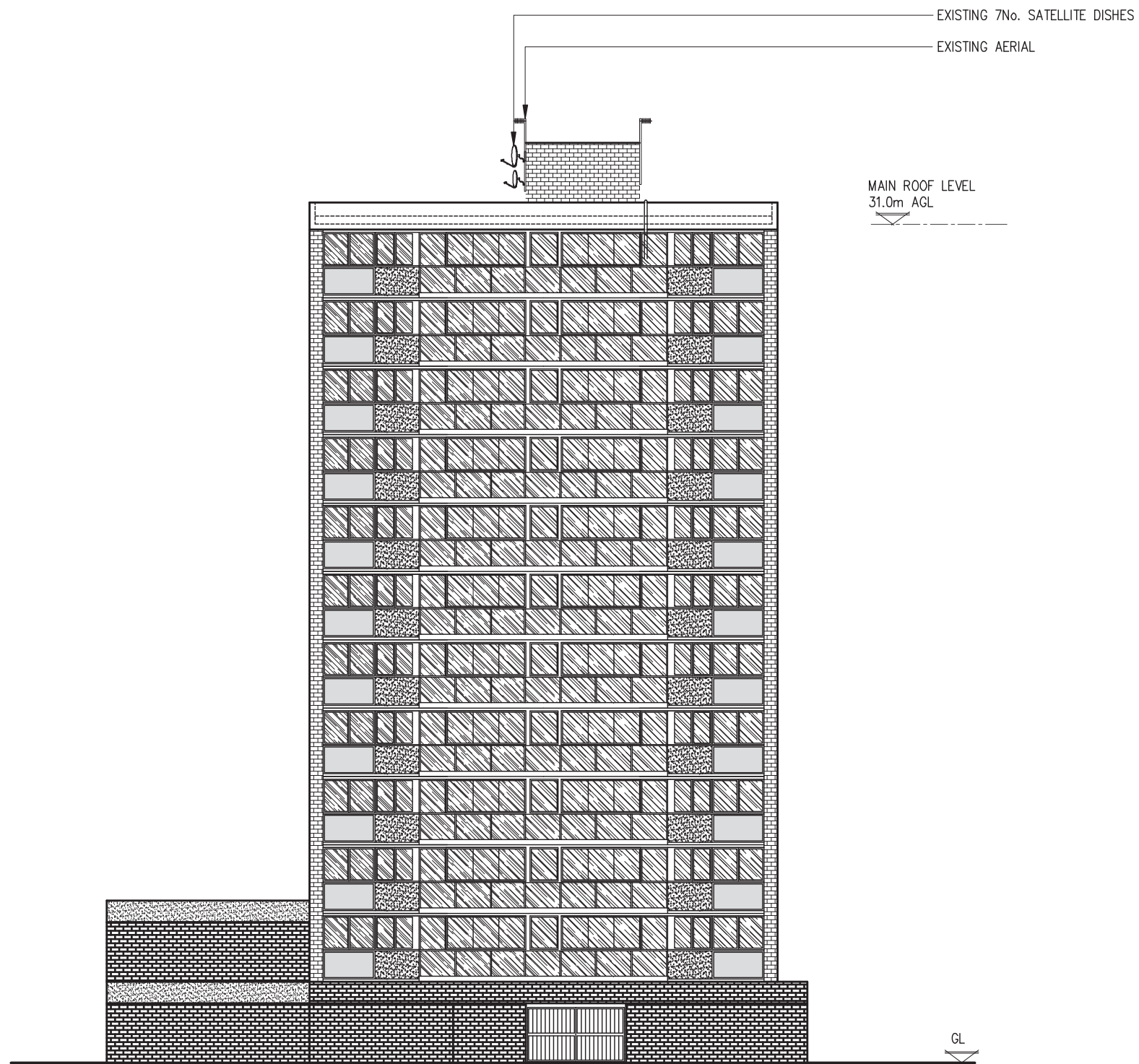
Drawing Title: PROPOSED NORTH WEST ELEVATION

Purpose of Issue: PLANNING

Drawing Number: 301

Scale: As Shown	Drawn: MONO	Date: 07.12.16	Issue: B
Checked: PM	Date: 07.12.16	Approved: AB	Date: 07.12.16

The drawings comply with TEF & Vodafone **Non-Standard ICNIRP guidelines.**
 Designed in accordance with Cornerstone document: CORN/09/006



EXISTING SOUTH EAST ELEVATION
(1:200)

Notes:
1 ALL DIMENSIONS ARE IN MM UNLESS NOTED OTHERWISE
2 DRAWING TO SCALE WHEN PRINTED AT A3

N.G.R. E: 531045 N: 182089

REV	MODIFICATION	BY	CH	DATE
A	Issued for Approval	BJ	AKB	25.07.17

mono #

MONO CONSULTANTS LIMITED
No. 58 Cygnet Court
Timothy's Bridge Road
Stratford-upon-Avon
Warwickshire
CV37 9NW
t. 44 (0)1789 206500
f. 44 (0)1789 206529
www.monoconsultants.com



Cell Name	Opt
MULLEN TOWERS	A

Cell ID No		
CTIL	Host	Sharer
147971_3	(VF) 79111	(TEF) 066490

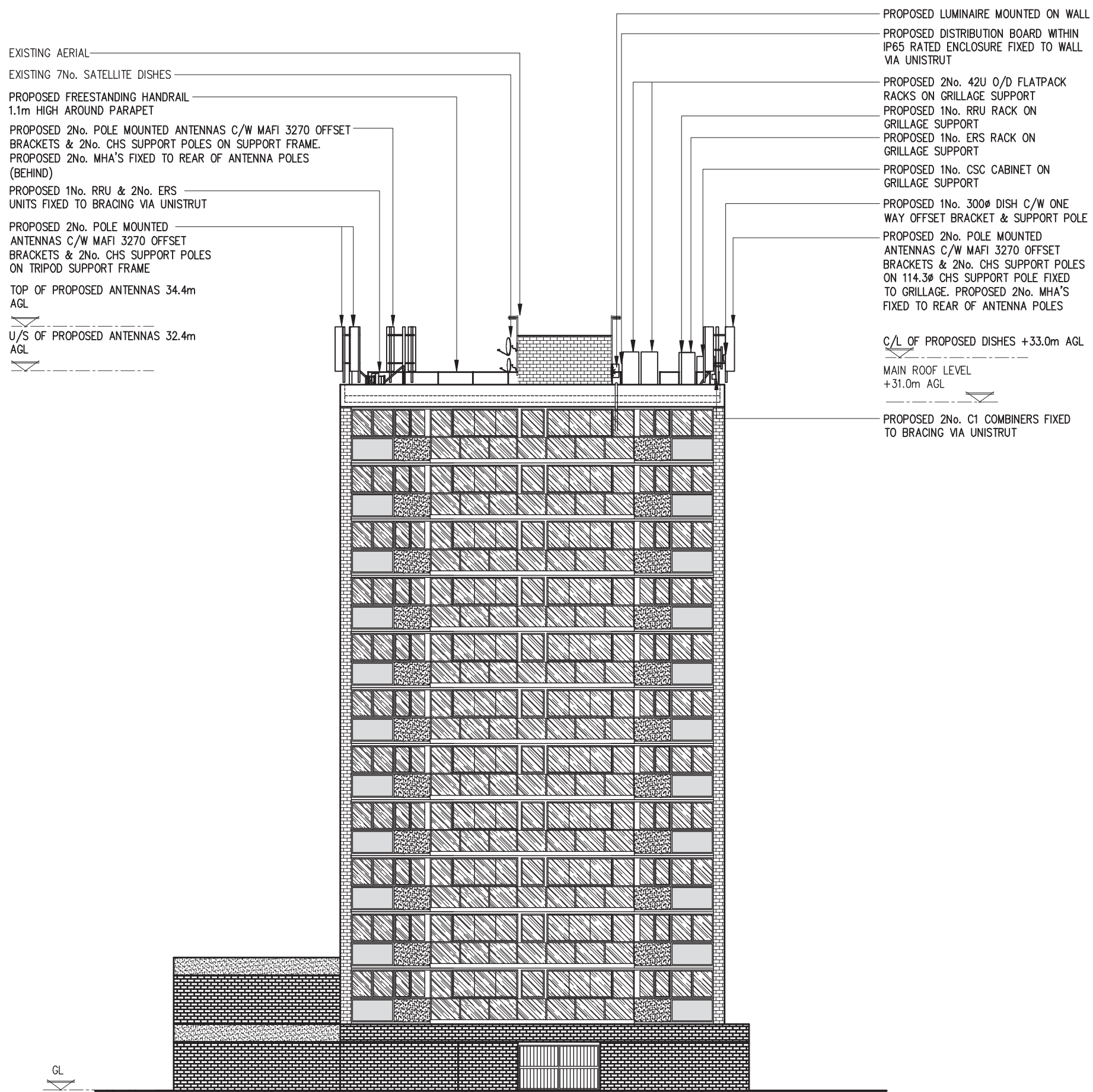
Site Address / Contact Details
85 MOUNT PLEASANT LONDON WC1X 0AG

Drawing Title: EXISTING SOUTH EAST ELEVATION

Purpose of Issue: **PLANNING**

Drawing Number: 302

Scale:	Drawn:	Date:	Issue:
As Shown	BJ	25.07.17	A
Checked:	Date:	Approved:	
AKB	25.07.17	AKB	25.07.17



EXISTING AERIAL
 EXISTING 7No. SATELLITE DISHES
 PROPOSED FREESTANDING HANDRAIL
 1.1m HIGH AROUND PARAPET
 PROPOSED 2No. POLE MOUNTED ANTENNAS C/W MAFI 3270 OFFSET
 BRACKETS & 2No. CHS SUPPORT POLES ON SUPPORT FRAME.
 PROPOSED 2No. MHA'S FIXED TO REAR OF ANTENNA POLES
 (BEHIND)
 PROPOSED 1No. RRU & 2No. ERS
 UNITS FIXED TO BRACING VIA UNISTRUT
 PROPOSED 2No. POLE MOUNTED
 ANTENNAS C/W MAFI 3270 OFFSET
 BRACKETS & 2No. CHS SUPPORT POLES
 ON TRIPOD SUPPORT FRAME
 TOP OF PROPOSED ANTENNAS 34.4m
 AGL
 U/S OF PROPOSED ANTENNAS 32.4m
 AGL

PROPOSED LUMINAIRE MOUNTED ON WALL
 PROPOSED DISTRIBUTION BOARD WITHIN
 IP65 RATED ENCLOSURE FIXED TO WALL
 VIA UNISTRUT
 PROPOSED 2No. 42U O/D FLATPACK
 RACKS ON GRILLAGE SUPPORT
 PROPOSED 1No. RRU RACK ON
 GRILLAGE SUPPORT
 PROPOSED 1No. ERS RACK ON
 GRILLAGE SUPPORT
 PROPOSED 1No. CSC CABINET ON
 GRILLAGE SUPPORT
 PROPOSED 1No. 300Ø DISH C/W ONE
 WAY OFFSET BRACKET & SUPPORT POLE
 PROPOSED 2No. POLE MOUNTED
 ANTENNAS C/W MAFI 3270 OFFSET
 BRACKETS & 2No. CHS SUPPORT POLES
 ON 114.3Ø CHS SUPPORT POLE FIXED
 TO GRILLAGE. PROPOSED 2No. MHA'S
 FIXED TO REAR OF ANTENNA POLES
 C/L OF PROPOSED DISHES +33.0m AGL
 MAIN ROOF LEVEL
 +31.0m AGL
 PROPOSED 2No. C1 COMBINERS FIXED
 TO BRACING VIA UNISTRUT

Notes:
 1 ALL DIMENSIONS ARE IN MM UNLESS NOTED OTHERWISE
 2 DRAWING TO SCALE WHEN PRINTED AT A3

N.G.R. E: 531045 N: 182089

REV	A	Issued for Approval	BJ	AKB	25.07.17
		MODIFICATION	BY	CH	DATE

mono #

MONO CONSULTANTS LIMITED
 No. 58 Cygnet Court
 Timothy's Bridge Road
 Stratford-upon-Avon
 Warwickshire
 CV37 9NW
 t. 44 (0)1789 206500
 f. 44 (0)1789 206529
 www.monoconsultants.com



Cell Name	Opt
MULLEN TOWERS	A

Cell ID No		
CTIL	Host	Sharer
147971_3	(VF) 79111	(TEF) 066490

Site Address / Contact Details

85 MOUNT PLEASANT
 LONDON
 WC1X 0AG

Drawing Title:
 PROPOSED SOUTH EAST ELEVATION

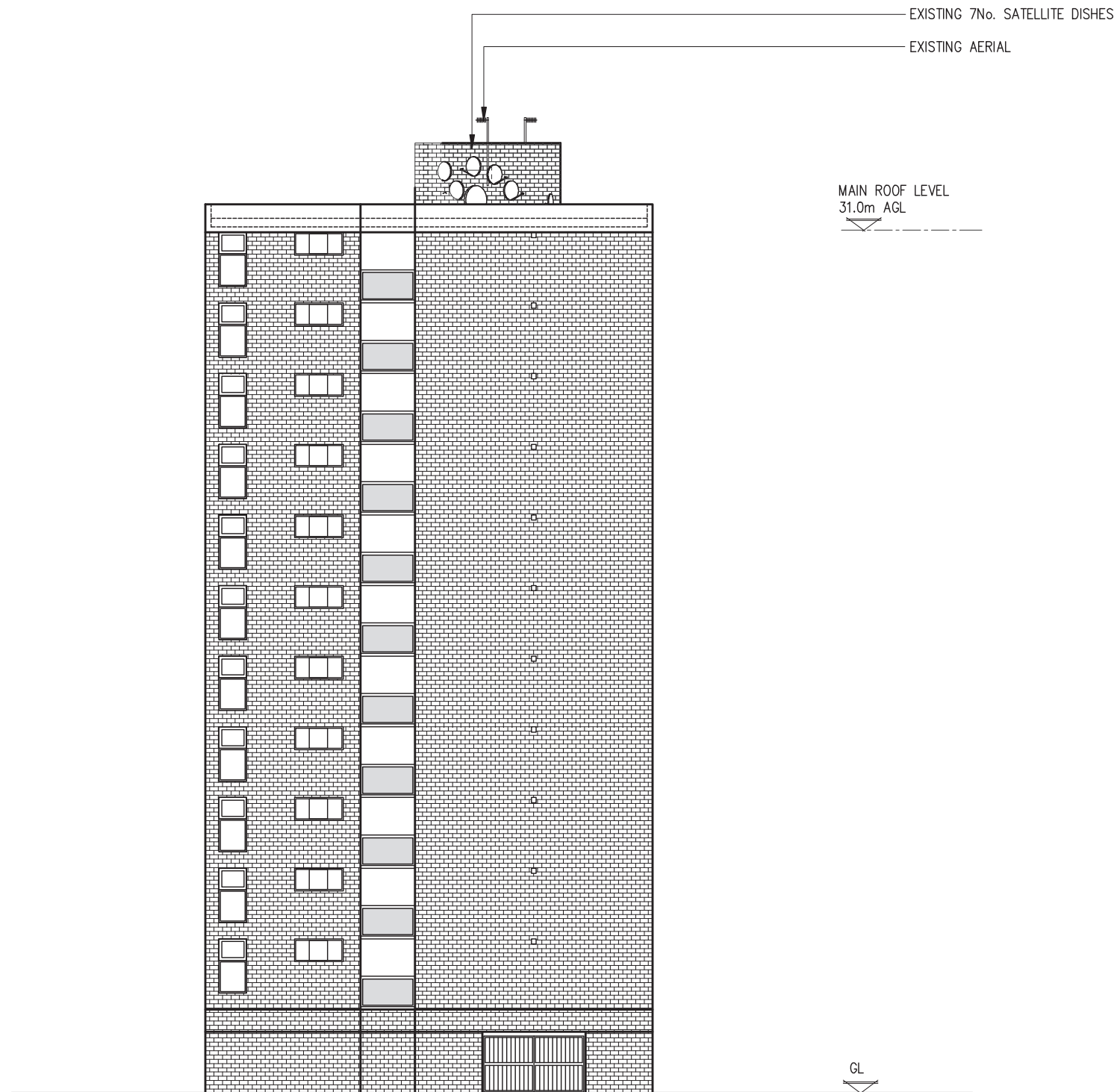
Purpose of Issue:
 PLANNING

Drawing Number:
 303

Scale: As Shown	Drawn: BJ	Date: 25.07.17	Issue: A
Checked: AKB	Date: 25.07.17	Approved: AKB	Date: 25.07.17

PROPOSED SOUTH EAST ELEVATION
 (1:200)

The drawings comply with TEF & Vodafone **Non-Standard ICNIRP guidelines.**
 Designed in accordance with Cornerstone document: CORN/09/006



EXISTING SOUTH WEST ELEVATION
(1:200)


Notes:
1 ALL DIMENSIONS ARE IN MM UNLESS NOTED OTHERWISE
2 DRAWING TO SCALE WHEN PRINTED AT A3

N.G.R. | E: 531045 | N: 182089

REV	MODIFICATION	BY	CH	DATE
A	Issued for Approval	BJ	AKB	25.07.17

mono #

MONO CONSULTANTS LIMITED
No. 58 Cygnet Court
Timothy's Bridge Road
Stratford-upon-Avon
Warwickshire
CV37 9NW
t. 44 (0)1789 206500
f. 44 (0)1789 206529
www.monoconsultants.com



CTIL

Cell Name	Opt
MULLEN TOWERS	A

Cell ID No		
CTIL	Host	Sharer
147971_3	(VF) 79111	(TEF) 066490

Site Address / Contact Details
85 MOUNT PLEASANT LONDON WC1X 0AG

Drawing Title: EXISTING SOUTH WEST ELEVATION

Purpose of Issue: **PLANNING**

Drawing Number: 304

Scale:	Drawn:	Date:	Issue:
As Shown	BJ	25.07.17	A
Checked:	Date:	Approved:	
AKB	25.07.17	AKB	25.07.17

EXISTING AERIAL
 EXISTING 7No. SATELLITE DISHES
 PROPOSED FREESTANDING HANDRAIL
 1.1m HIGH AROUND PARAPET
 PROPOSED 2No. POLE MOUNTED ANTENNAS C/W MAFI 3270 OFFSET
 BRACKETS & 2No. CHS SUPPORT POLES ON SUPPORT FRAME.
 PROPOSED 2No. MHA'S FIXED TO REAR OF ANTENNA POLES

TOP OF PROPOSED ANTENNAS 34.4m
 AGL
 U/S OF PROPOSED ANTENNAS 32.4m
 AGL

PROPOSED 1No. RRU & 2No. VF ERS UNITS
 ON MAFI 4112 FREESTANDER LIGHT

PROPOSED 1No. 300Ø DISH C/W ONE
 WAY OFFSET BRACKET & SUPPORT POLE
 PROPOSED 2No. POLE MOUNTED
 ANTENNAS C/W MAFI 3270 OFFSET
 BRACKETS & 2No. CHS SUPPORT POLES
 ON 114.3Ø CHS SUPPORT POLE FIXED
 TO GRILLAGE. PROPOSED 2No. MHA'S
 FIXED TO REAR OF ANTENNA POLES

C/L OF PROPOSED DISHES +33.0m AGL
 MAIN ROOF LEVEL
 +31.0m AGL

PROPOSED 1No. RRU & 2No. VF ERS
 UNITS ON MAFI 4112 FREESTANDER
 LIGHT

GL

PROPOSED SOUTH WEST ELEVATION

(1:200)

Notes:

1 ALL DIMENSIONS ARE IN MM UNLESS NOTED OTHERWISE
 2 DRAWING TO SCALE WHEN PRINTED AT A3

N.G.R. E: 531045 N: 182089

REV	MODIFICATION	BY	CH	DATE
A	Issued for Approval	BJ	AKB	25.07.17

mono #

MONO CONSULTANTS LIMITED
 No. 58 Cygnet Court
 Timothy's Bridge Road
 Stratford-upon-Avon
 Warwickshire
 CV37 9NW
 t. 44 (0)1789 206500
 f. 44 (0)1789 206529
 www.monoconsultants.com



Cell Name	Opt
MULLEN TOWERS	A

Cell ID No		
CTIL	Host	Sharer
147971_3	(VF) 79111	(TEF) 066490

Site Address / Contact Details
85 MOUNT PLEASANT LONDON WC1X 0AG

Drawing Title: PROPOSED SOUTH WEST ELEVATION

Purpose of Issue: **PLANNING**

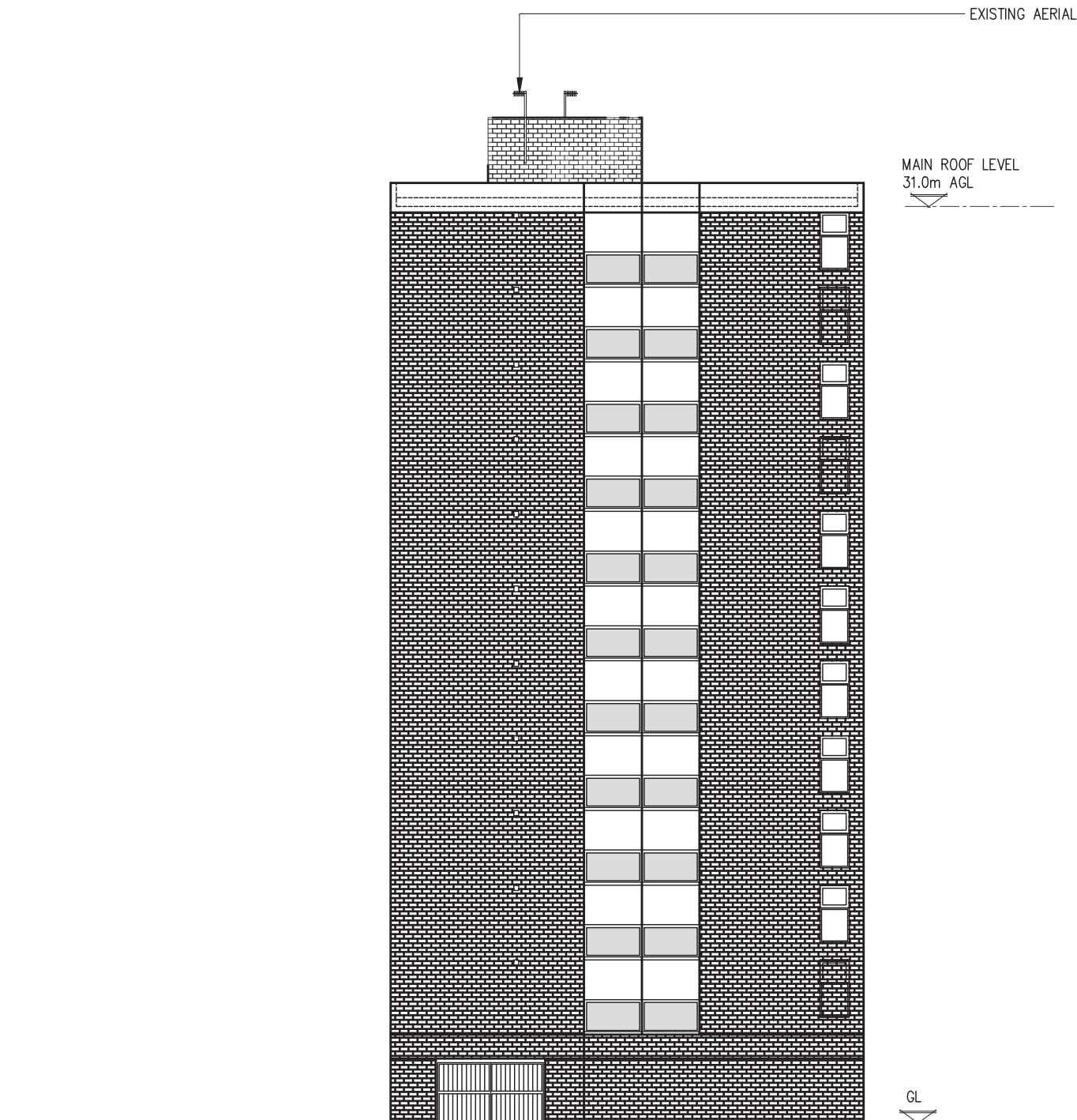
Drawing Number: 305

Scale:	Drawn:	Date:	Issue:
As Shown	BJ	25.07.17	A
Checked:	Date:	Approved:	Date:
AKB	25.07.17	AKB	25.07.17

The drawings comply with TEF & Vodafone **Non-Standard ICNIRP guidelines.**
 Designed in accordance with Cornerstone document: CORN/09/006

Notes:
 1 ALL DIMENSIONS ARE IN MM UNLESS NOTED OTHERWISE
 2 DRAWING TO SCALE WHEN PRINTED AT A3

N.G.R. | E: 531045 | N: 182089



EXISTING NORTH EAST ELEVATION
 (1:200)

The drawings comply with TEF & Vodafone **Non-Standard ICNIRP guidelines.**
 Designed in accordance with Cornerstone document: CORN/09/006

A	Issued for Approval	BJ	AKB	25.07.17
REV	MODIFICATION	BY	CH	DATE

mono #

MONO CONSULTANTS LIMITED
 No. 58 Cygnet Court
 Timothy's Bridge Road
 Stratford-upon-Avon
 Warwickshire
 CV37 9NW
 t. 44 (0)1789 206500
 f. 44 (0)1789 206529
 www.monoconsultants.com



Cell Name	Opt
MULLEN TOWERS	A

Cell ID No		
CTIL	Host	Sharer
147971_3	(VF) 79111	(TEF) 066490

Site Address / Contact Details

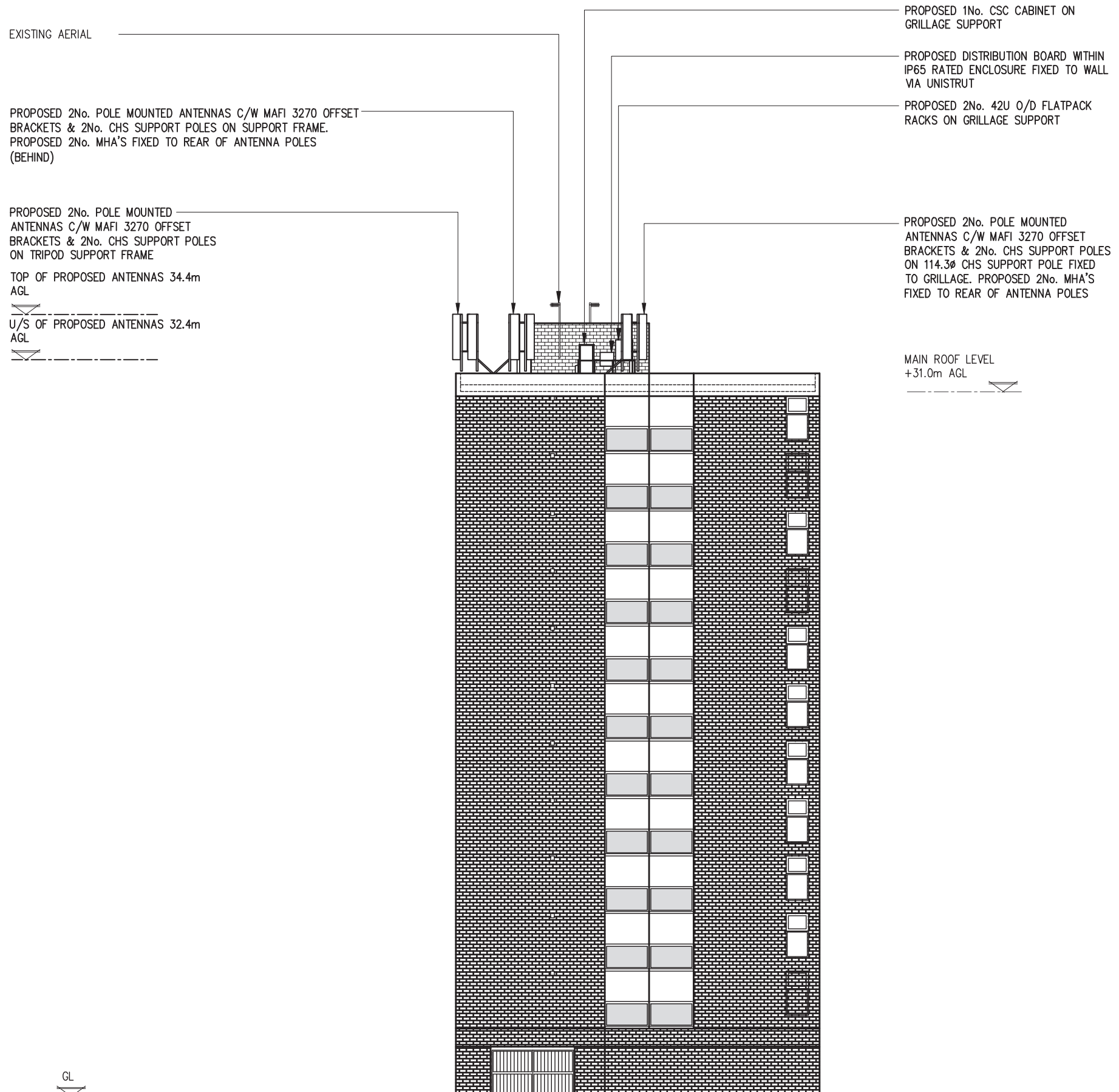
85 MOUNT PLEASANT
 LONDON
 WC1X 0AG

Drawing Title:
 EXISTING NORTH EAST ELEVATION

Purpose of Issue:
 PLANNING

Drawing Number:
 306

Scale: As Shown	Drawn: BJ	Date: 25.07.17	Issue: A
Checked: AKB	Date: 25.07.17	Approved: AKB	Date: 25.07.17



PROPOSED NORTH EAST ELEVATION
(1:200)

Notes:
1 ALL DIMENSIONS ARE IN MM UNLESS NOTED OTHERWISE
2 DRAWING TO SCALE WHEN PRINTED AT A3

N.G.R. | E: 531045 | N: 182089

REV	MODIFICATION	BY	CH	DATE
A	Issued for Approval	BJ	AKB	25.07.17

mono #

MONO CONSULTANTS LIMITED
No. 58 Cygnet Court
Timothy's Bridge Road
Stratford-upon-Avon
Warwickshire
CV37 9NW
t. 44 (0)1789 206500
f. 44 (0)1789 206529
www.monoconsultants.com



Cell Name	Opt
MULLEN TOWERS	A

Cell ID No		
CTIL	Host	Sharer
147971_3	(VF) 79111	(TEF) 066490

Site Address / Contact Details
85 MOUNT PLEASANT
LONDON
WC1X 0AG

Drawing Title:
PROPOSED NORTH EAST ELEVATION

Purpose of Issue:
PLANNING

Drawing Number:
303

Scale:	Drawn:	Date:	Issue:
As Shown	BJ	25.07.17	A
Checked:	Date:	Approved:	Date:
AKB	25.07.17	AKB	25.07.17