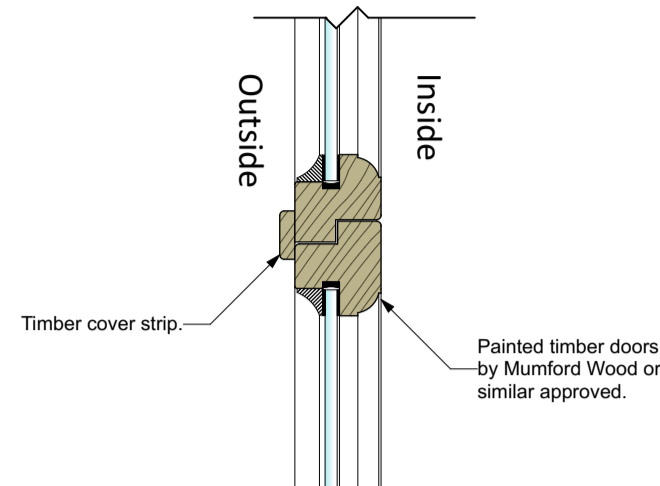
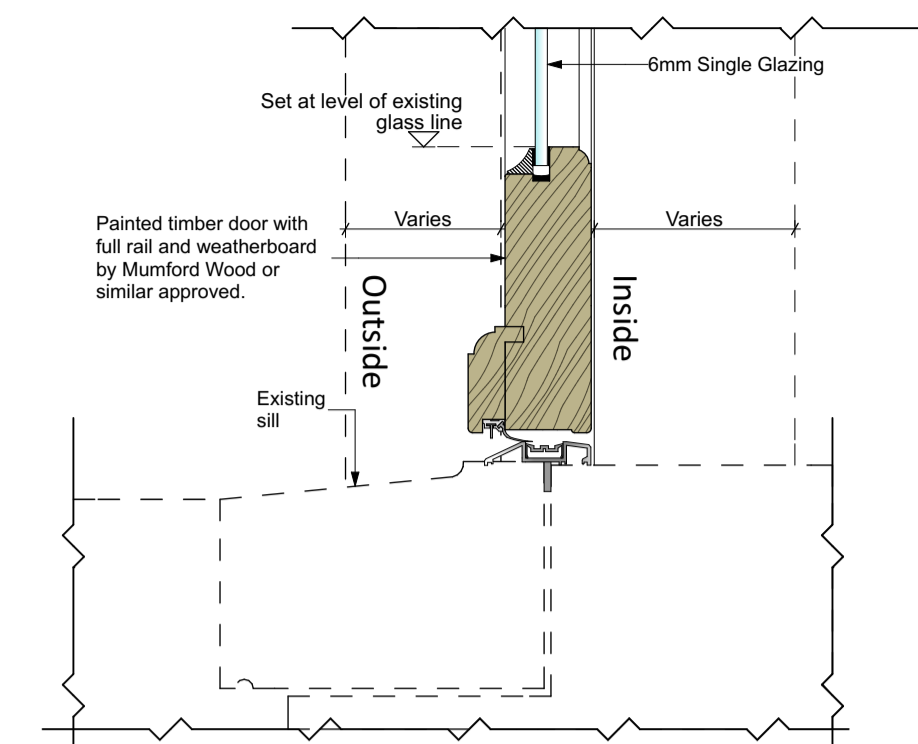


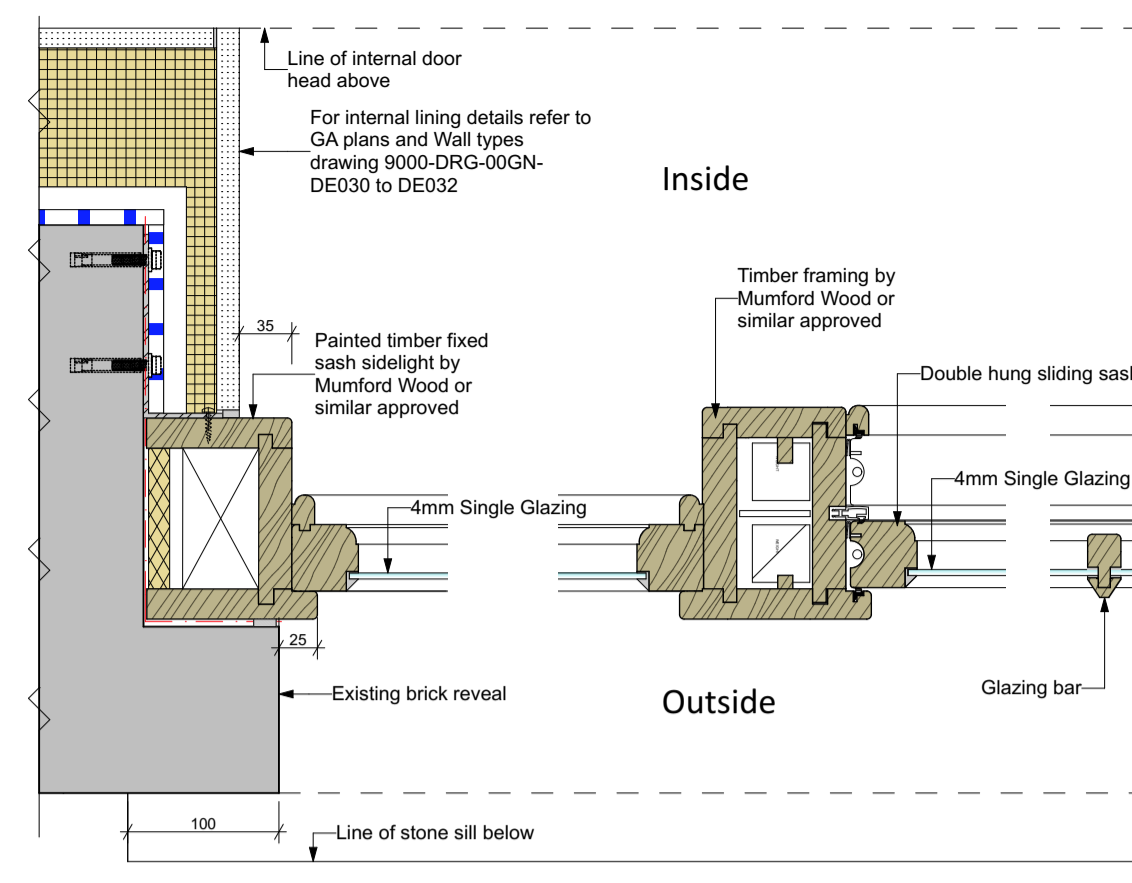
HD21 - KH-ED-UG-10 glazed timber door - central and edge stiles - plan view



HD22 - Typical glazed timber door meeting stiles - plan view

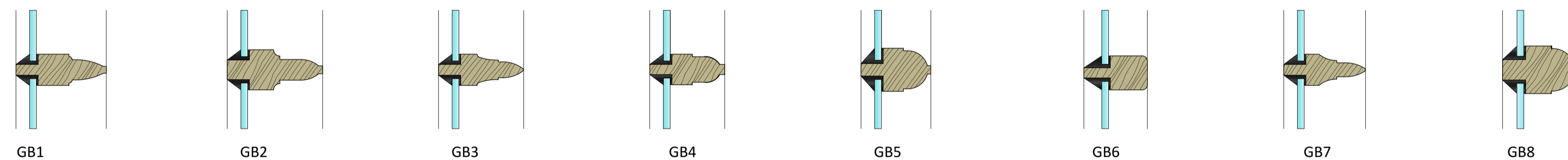


HD23 - Bottom rail detail - heritage glazed door with stone sill - section view

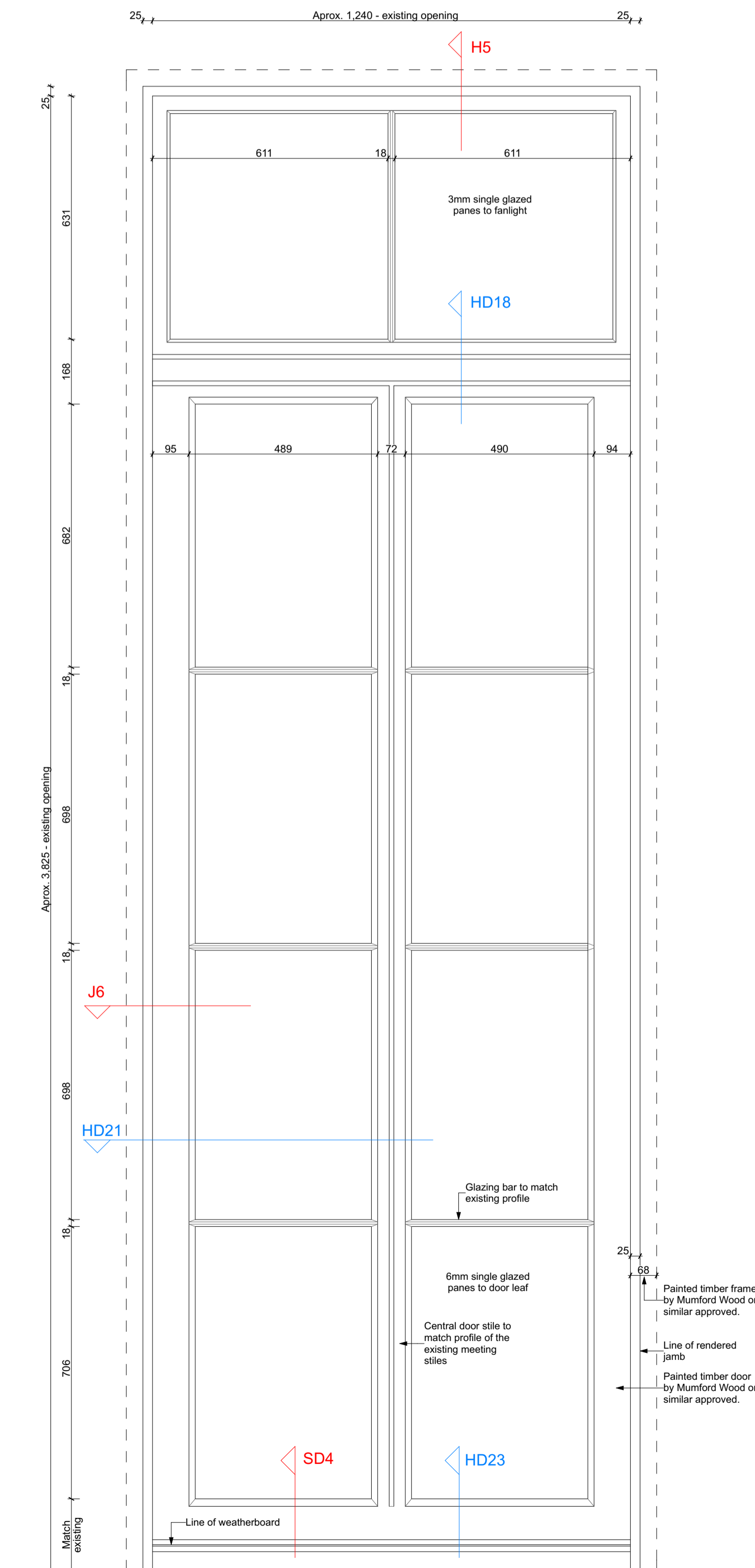


HD24 - Timber double hung sliding sash with fixed sash sidelights - plan view

Note: Profiles shown are to match existing glazing bars in all instances.

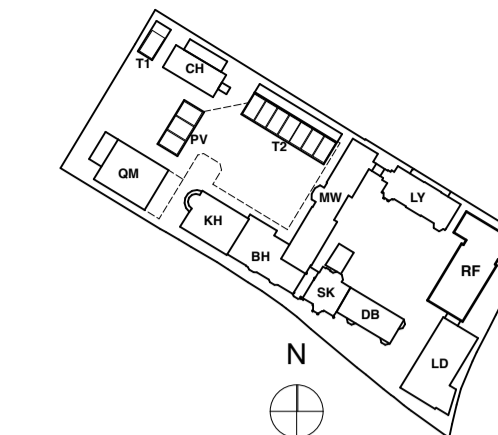


Typical Glazing Bars Scale 1:2



KH-UG-ED-10 Entrance door elevation

1:10



KEY PLAN

NOTE:

These details refer to openings in the existing Heritage buildings only.

Details show design intent and technical methodology only - in all instances new head, sill and jamb details are to visually match existing conditions.

Site conditions may vary from details shown. If existing conditions do not allow for the construction of the details as shown, the architect is to be informed before any further work is undertaken.

Details shown here are to take precedence over information shown in details and sections elsewhere.

Profiles to doors, windows, glazing bars, frames, etc are shown indicatively only, actual profiles may vary. Manufacturers shop drawings are to be reviewed and approved by the architect before manufacture.

NOTE: Door and window configurations (glazed / solid core / etc.) are indicative - refer to door and window schedules for specific glazing / solid variations. Refer to manufacturers details for window / door frames and leafs.

FOR CONSTRUCTION

REVISION	DRN	CHKD	DATE
C1	MRR	TW	22/03/2017



PROJECT
KIDDERPORE AVENUE

DRAWING
Generally Applicable
Door and window joinery details 2

SCALE 1:5, 1:2, 1:10 @ A1 DATE February 2017

DRAWING No. 15 230 DRAWN BY MRR
REV C1

9000-DRG-00GN-DE050
A & Q PARTNERSHIP (LONDON) LTD
THE LUX BUILDING, 2-4 HOXTON SQUARE, LONDON N1 6 NU
Tel: 020 7613 2244 Fax: 020 7613 2642 Email: london@aqp.co.uk
ARCHITECTURE DESIGN MASTERPLANNING INTERIORS