

KEY PLAN

NOTE:  
 These details refer to openings in the existing Heritage buildings only.

Details show design intent and technical methodology only - in all instances new head, sill and jamb details are to visually match existing conditions.

Site conditions may vary from details shown. If existing conditions do not allow for the construction of the details as shown, the architect is to be informed before any further work is undertaken.

Details shown here are to take precedence over information shown in details and sections elsewhere.

Profiles to doors, windows, glazing bars, frames, etc are shown indicatively only, actual profiles may vary. Manufacturers shop drawings are to be reviewed and approved by the architect before manufacture.

NOTE: Door and window configurations (glazed / solid core / etc.) are indicative - refer to door and window schedules for specific glazing / solid variations. Refer to manufacturers details for window / door frames and leafs.

**FOR CONSTRUCTION**

REVISION	DRN	CHKD	DATE
C1	MRR	TW	22/03/2017



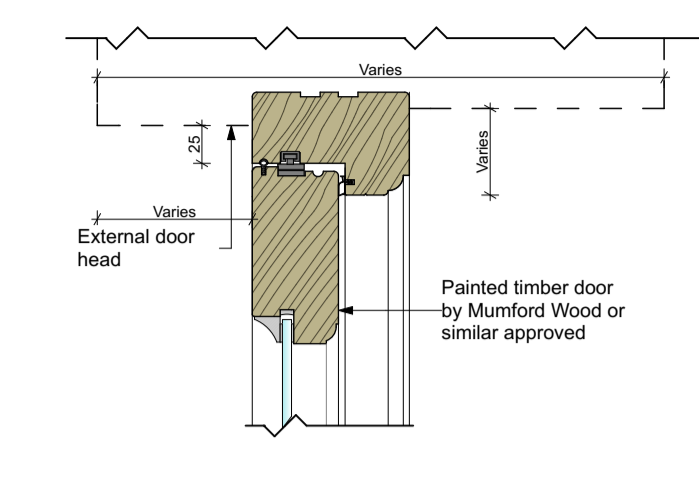
PROJECT  
 KIDDERPORE AVENUE

DRAWING  
 Generally Applicable  
 Door and window joinery details 1

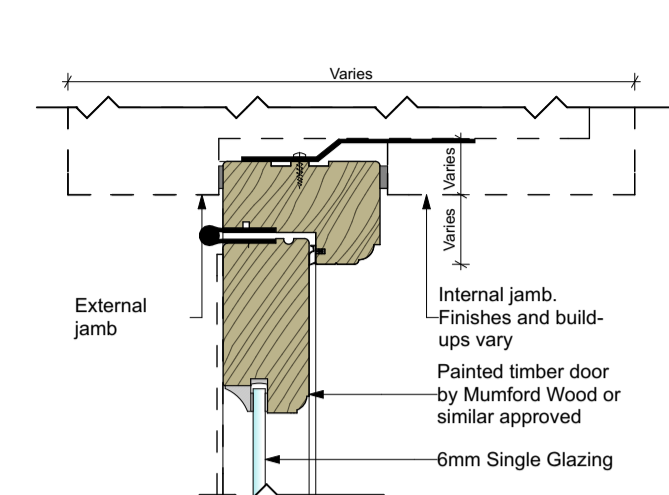
SCALE 1:5 @ A1 DATE February 2017

DRAWING No. 15 230 DRAWN BY MRR  
 9000-DRG-00GN-DE049 REV C1

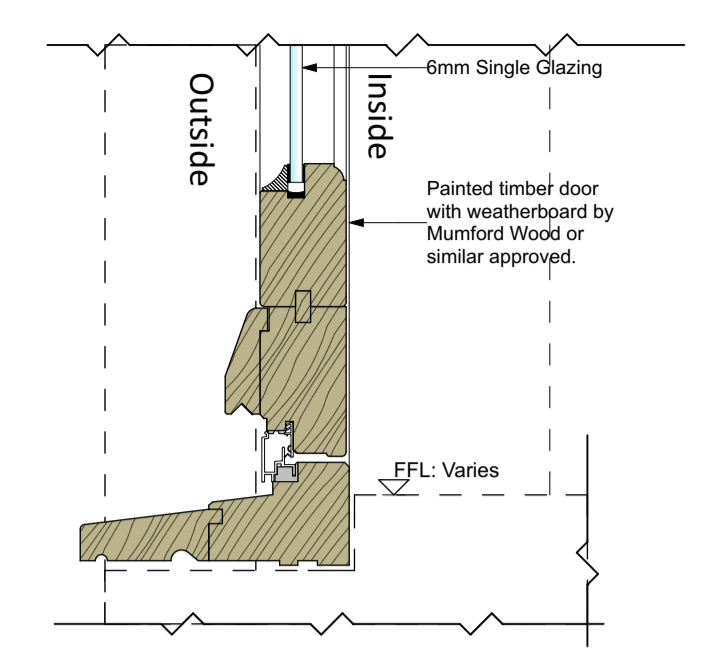
A & Q PARTNERSHIP (LONDON) LTD  
 THE LUX BUILDING, 2-4 HOXTON SQUARE, LONDON N1 6 NU  
 Tel: 020 7613 2244 Fax: 020 7613 2642 Email: london@aqp.co.uk  
 ARCHITECTURE DESIGN MASTERPLANNING INTERIORS



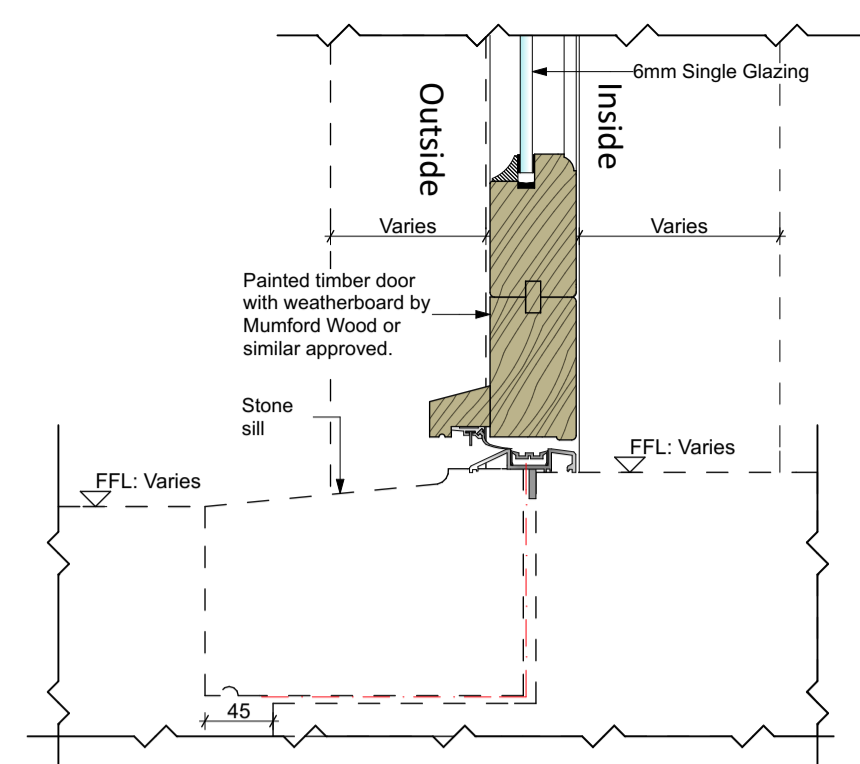
HD1 - Typical glazed door head rail - section view



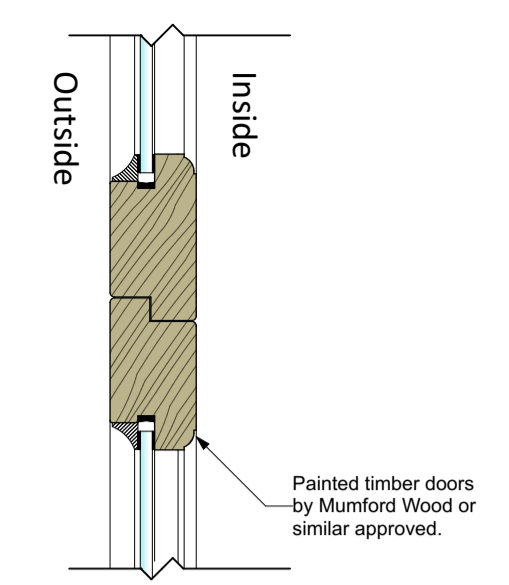
HD2 - Typical glazed door stile - plan view



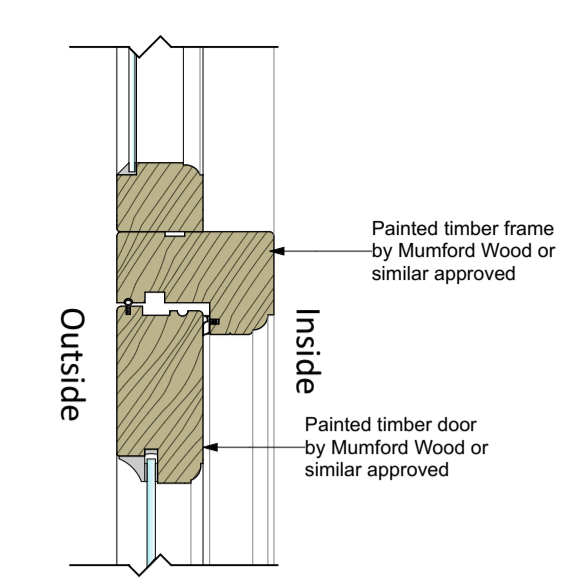
HD3 - Bottom rail detail - typical glazed door with timber sill - section view



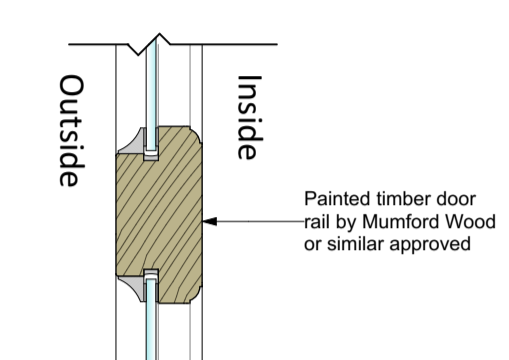
HD3 - Bottom rail detail - typical glazed door with stone sill - section view



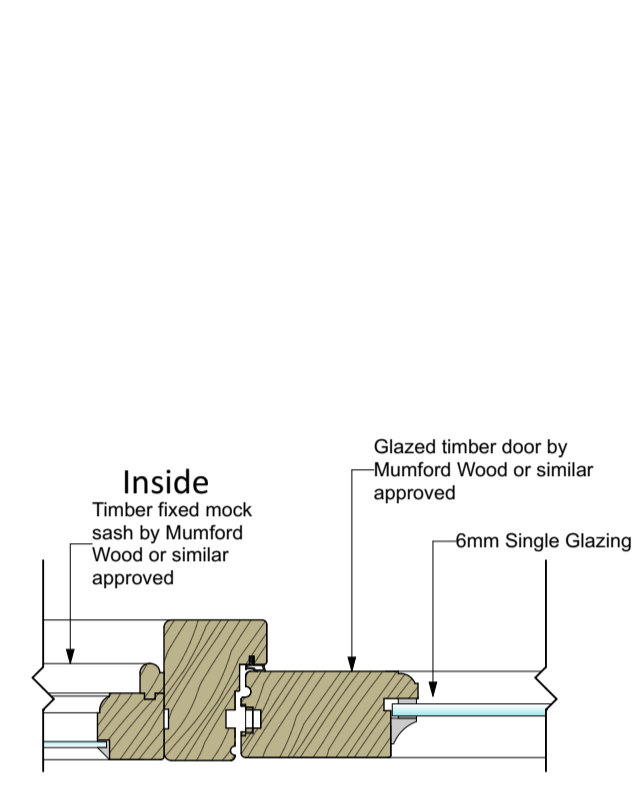
HD4 - Typical glazed timber door meeting stiles - plan view



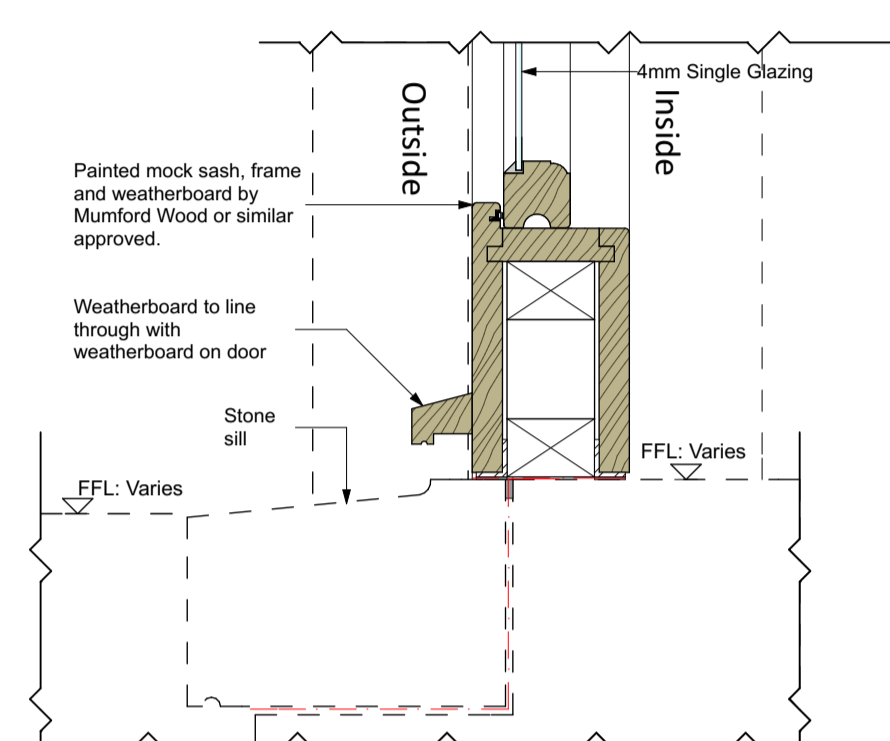
HD5 - Typical glazed door head with fixed fanlight above - section view



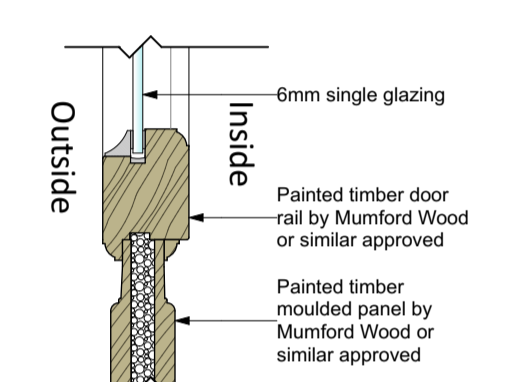
HD6 - Typical glazed door middle rail - section view



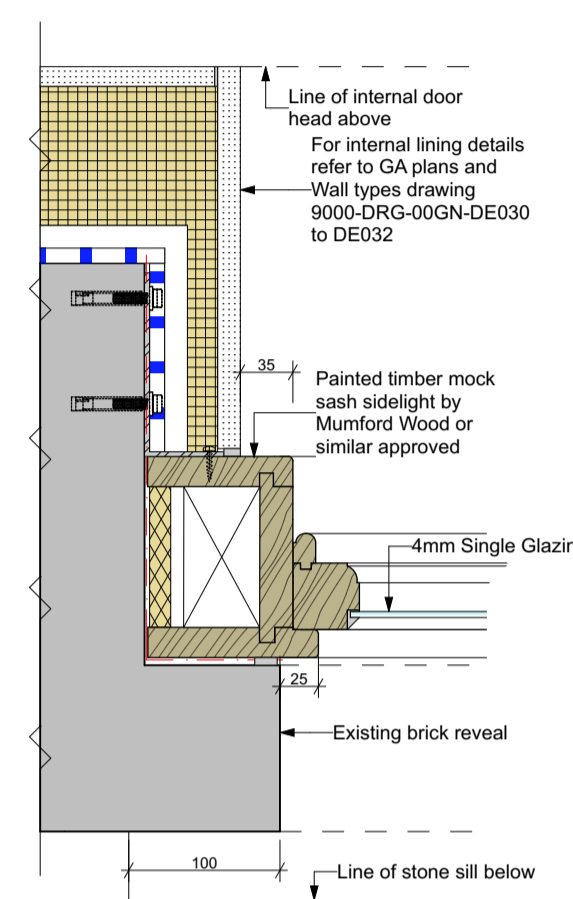
HD8 - Typical glazed door with fixed mock sash sidelight - plan view



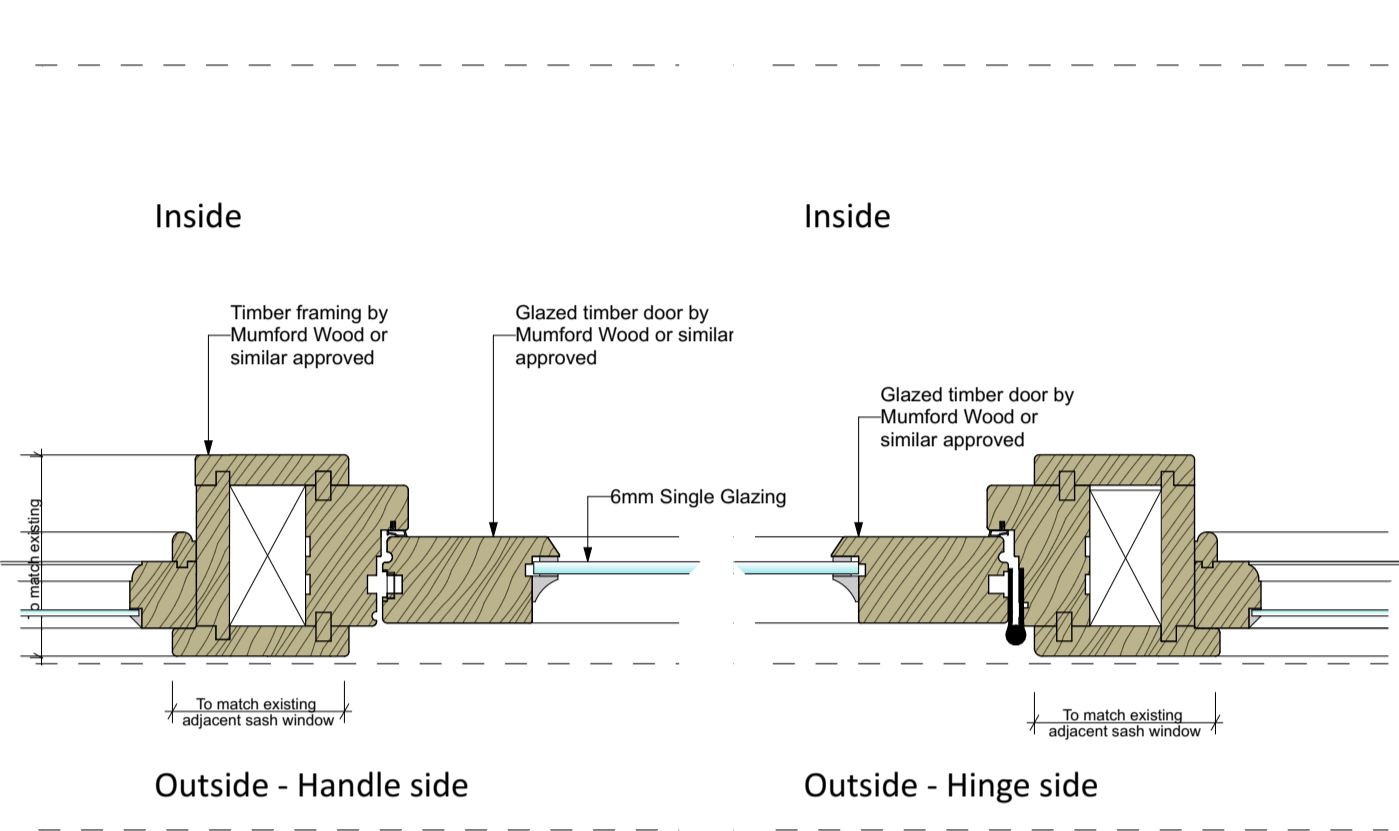
HD9 - Bottom rail detail - fixed mock sash side light to stone sill - section view



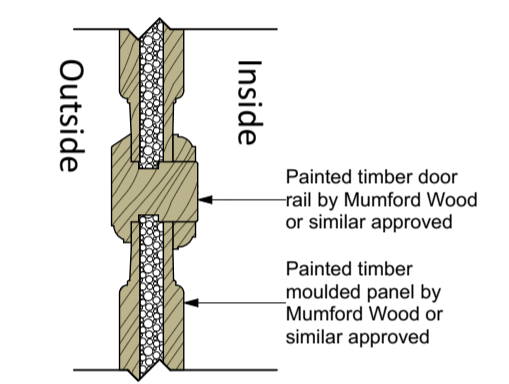
HD10 - Typical panelled door middle rail with upper glazed portion - section view



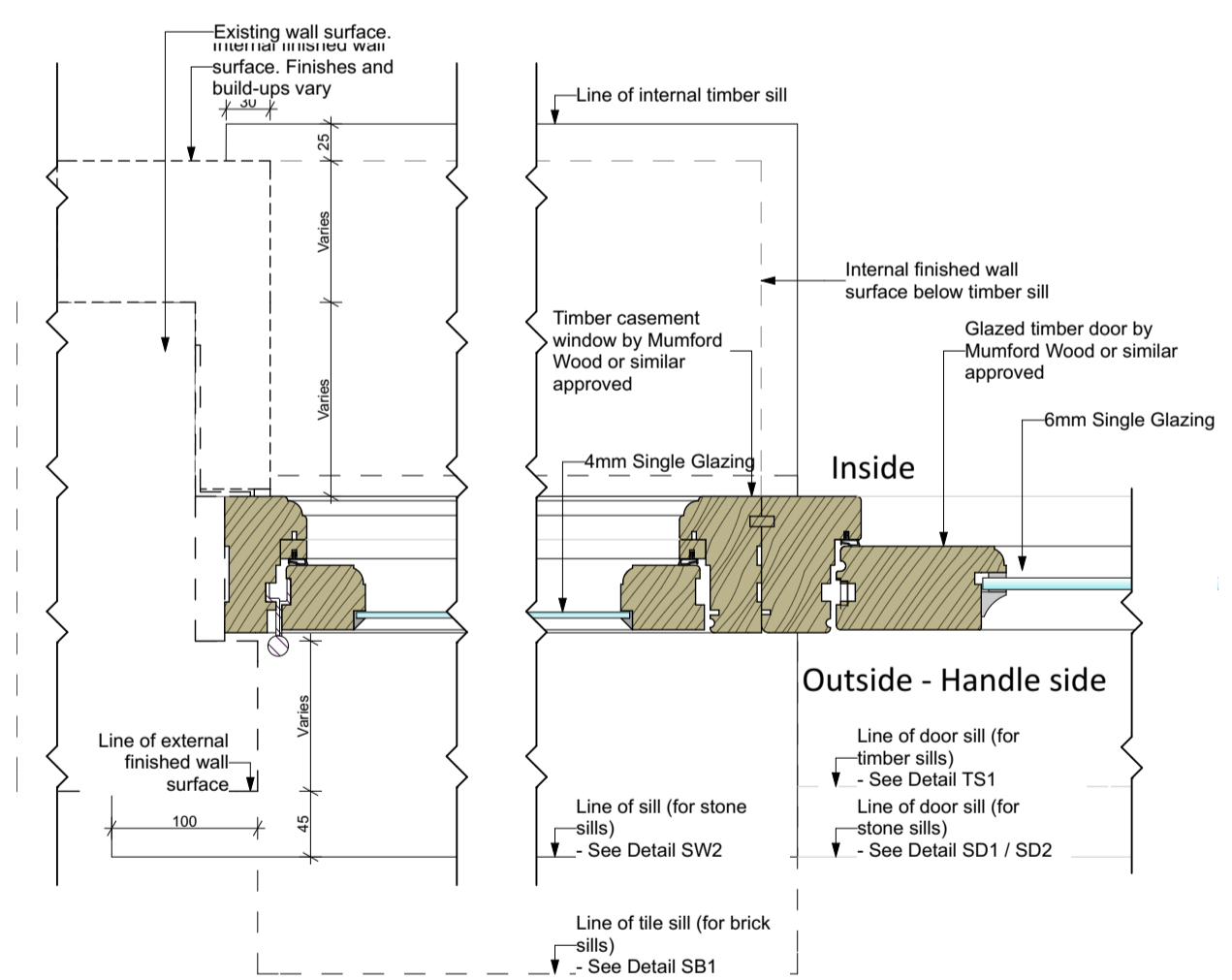
HD11 - Detail of DB-ED-GF-22 - Glazed timber door with fixed mock sash sidelight with thickened frame - plan view



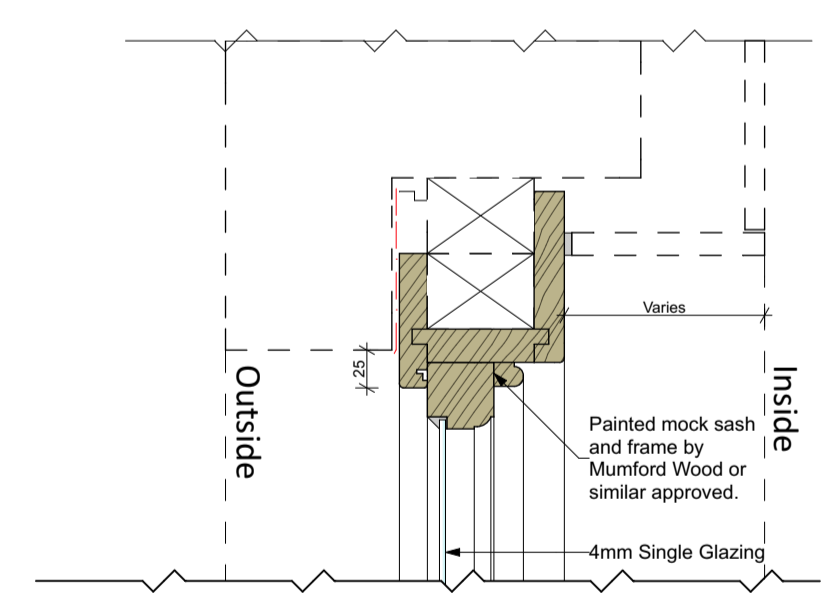
HD11 - Detail of DB-ED-GF-22 - Glazed timber door with fixed mock sash sidelight with thickened frame - section view



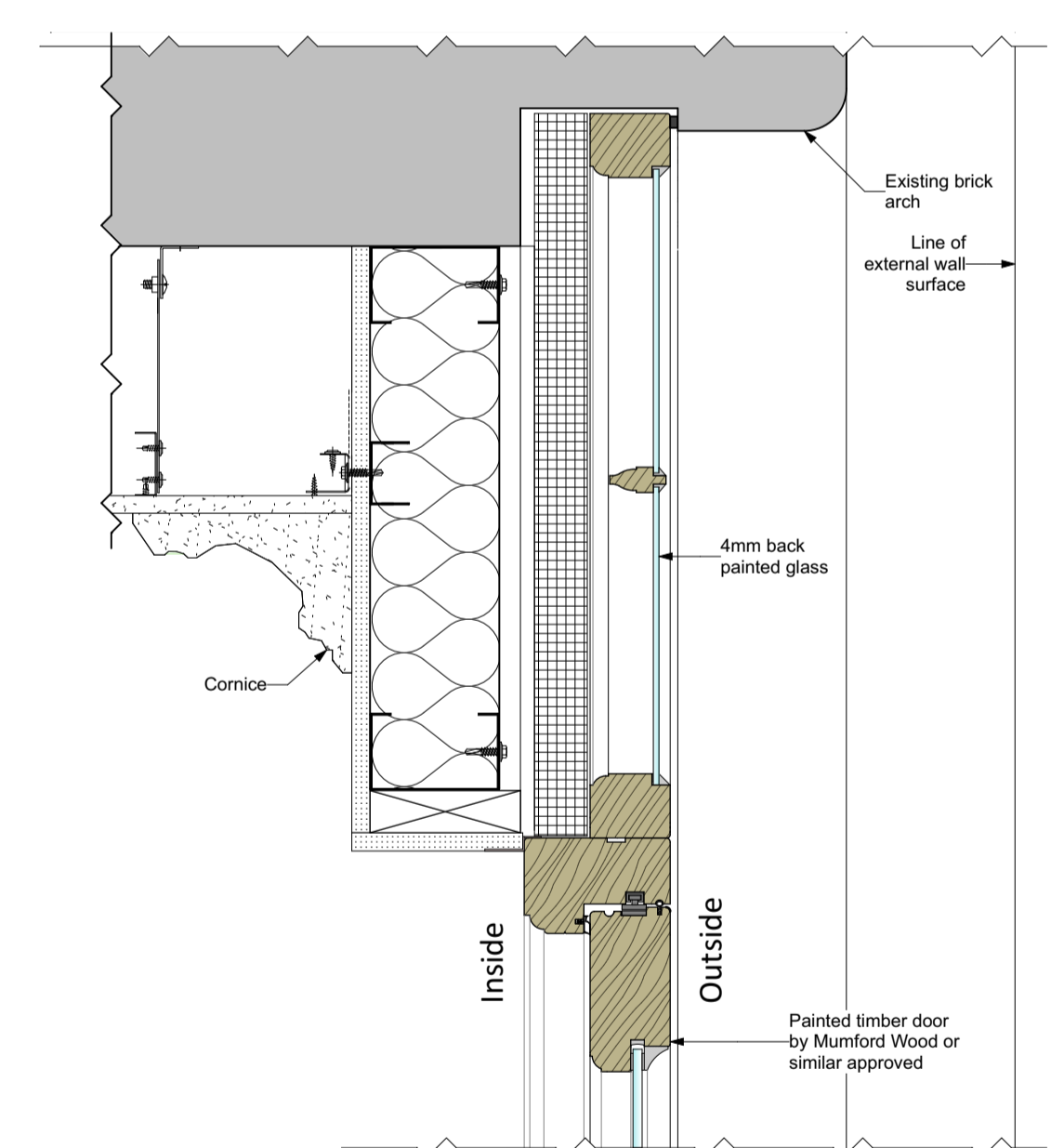
HD7 - Typical panelled door middle rail - section view



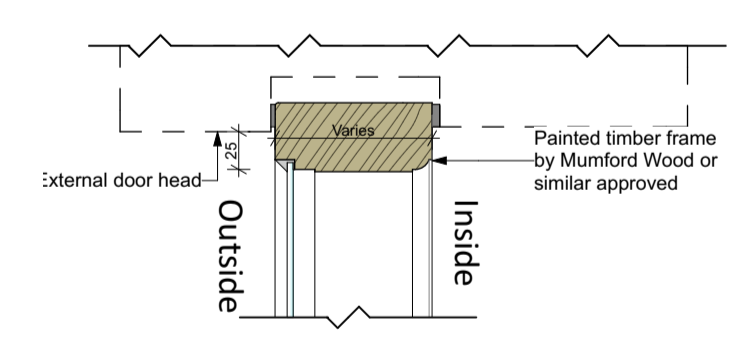
HD12 - Stile detail - Glazed timber door with casement sidelight - plan view



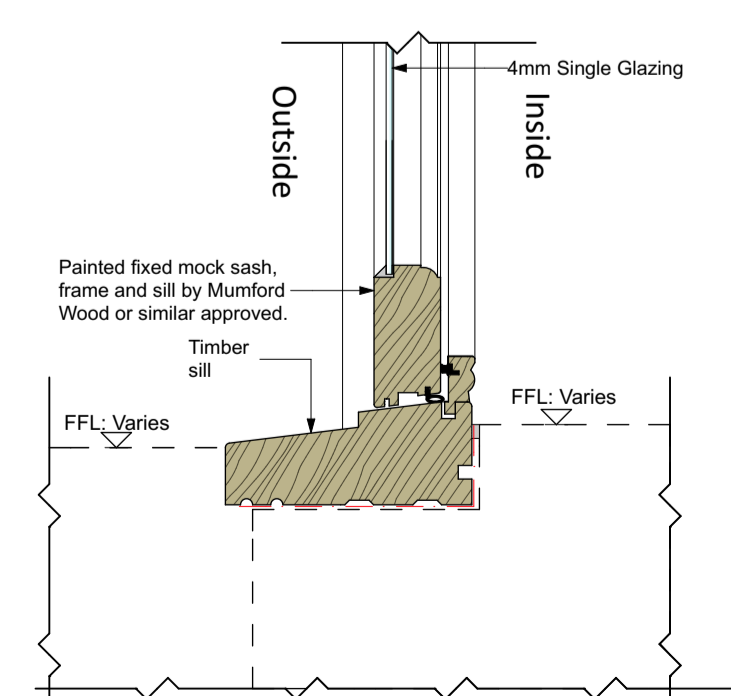
HD13 - Mock sash window head/stile - section view



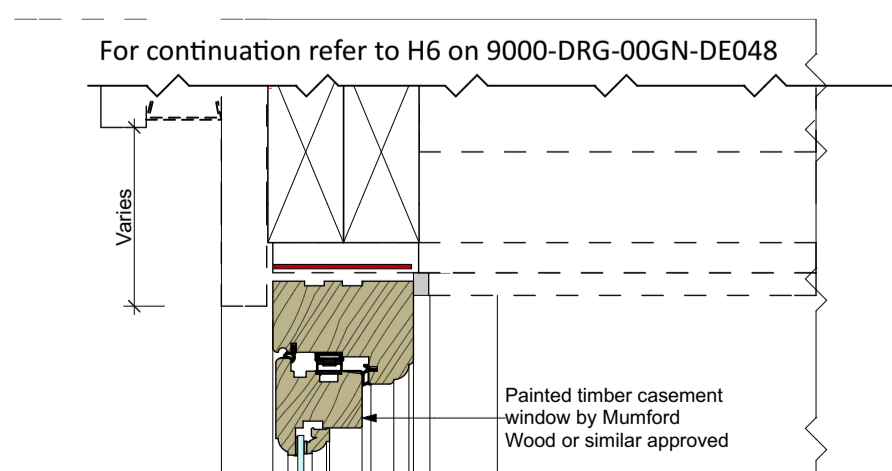
HD14 - Detail of MW-ED-LG-01 to MW-ED-LG-04 doors. Glazed timber doors with back-painted fixed fanlights - section view



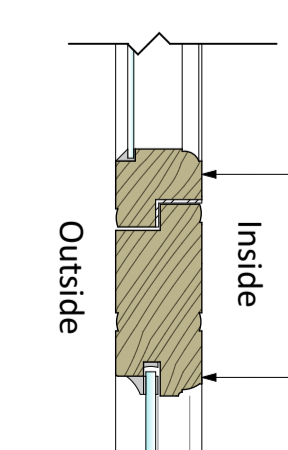
HD15 - Typical fixed fanlight head - section view



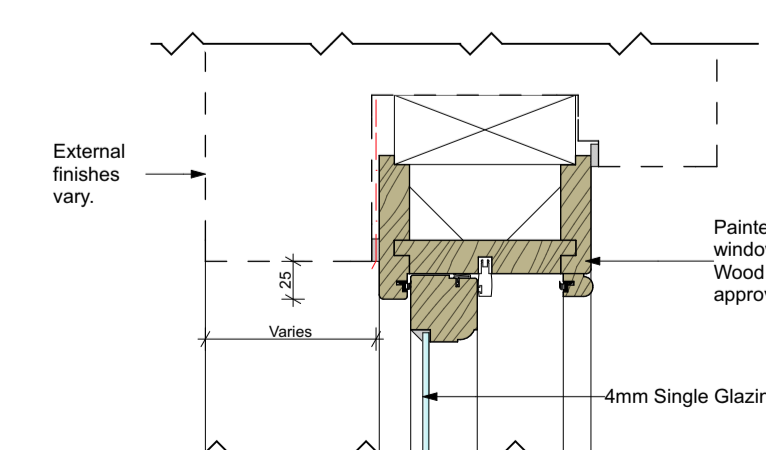
HD16 - Bottom rail detail - fixed sash window to timber sill - section view



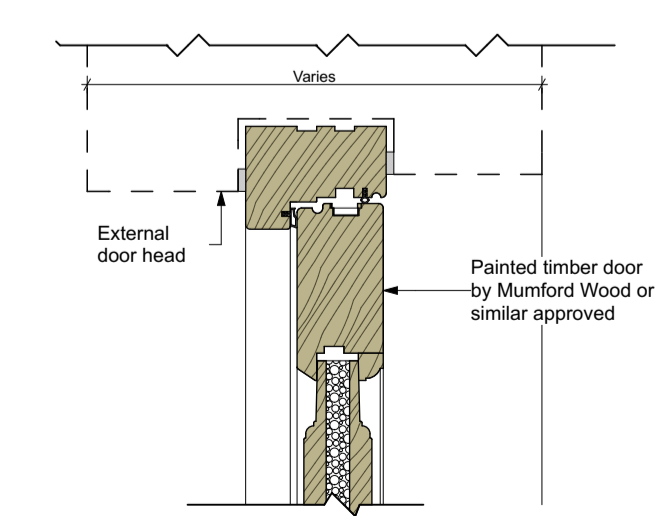
HD17 - Top rail detail - side hung casement window - section view



HD18 - Kiddepoore Hall entrance door - glazed door head rail - section view



HD19 - Sash window head - section view



HD20 - Typical panelled door head rail - section view