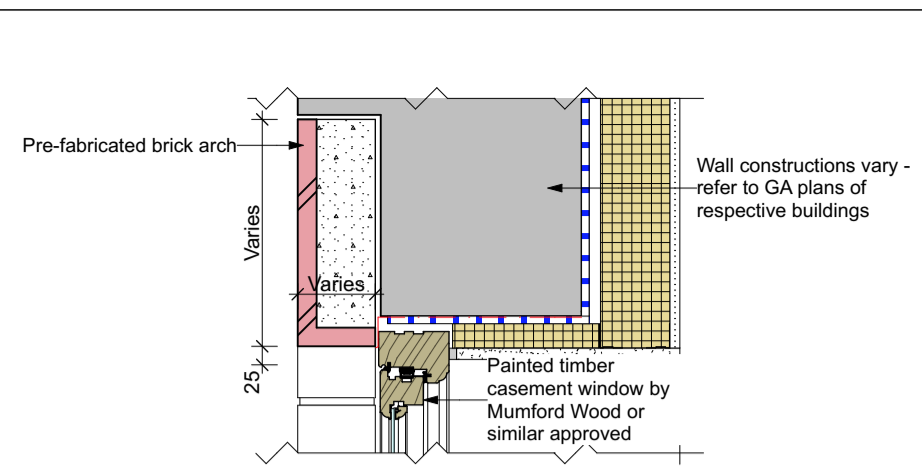
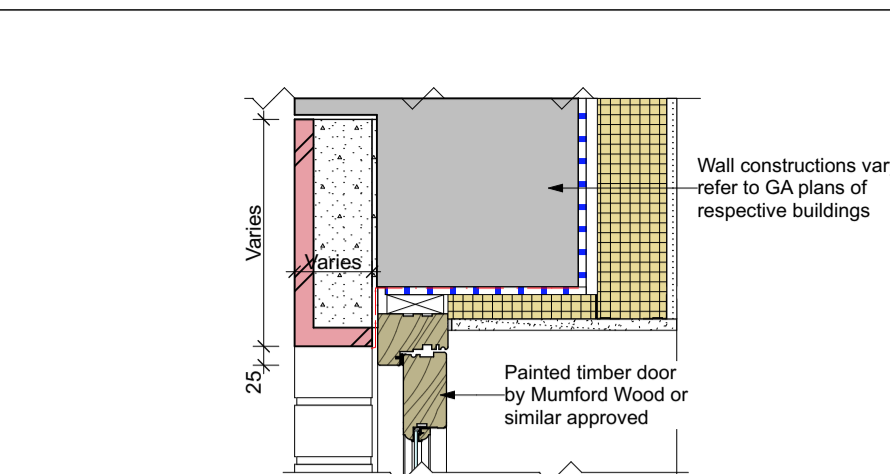


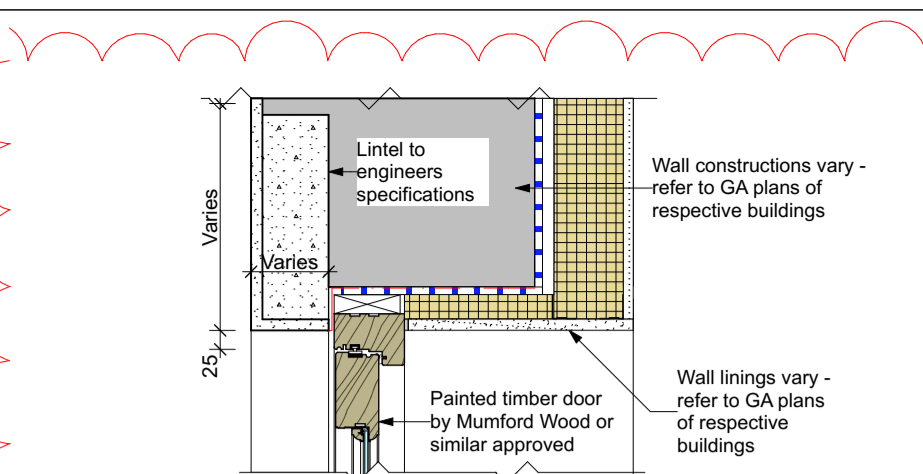
Detail H1 - Typical head detail to sash window



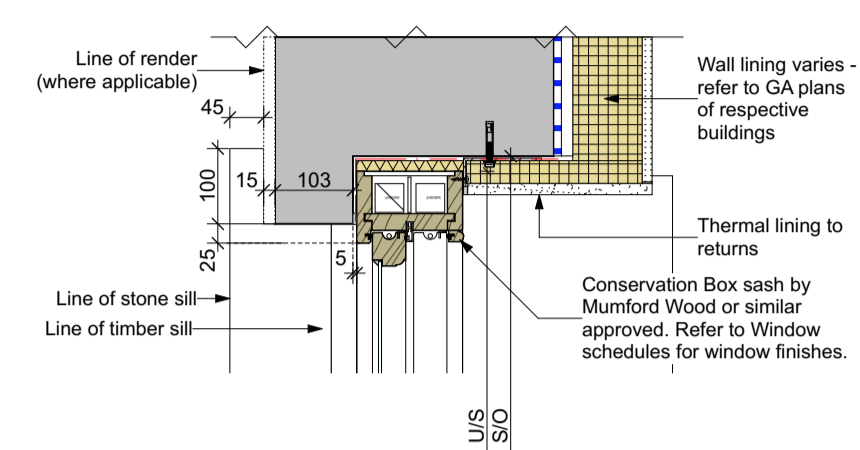
Detail H2 - Typical head detail to casement window



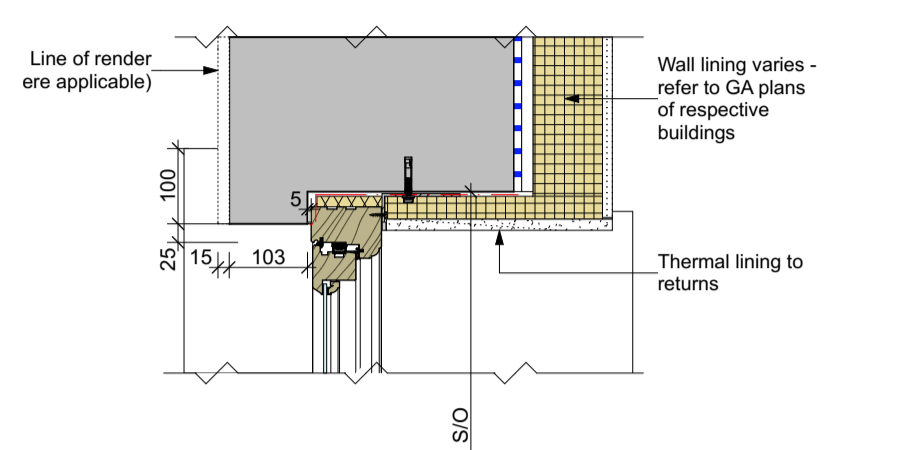
Detail H3 - Typical head detail to door



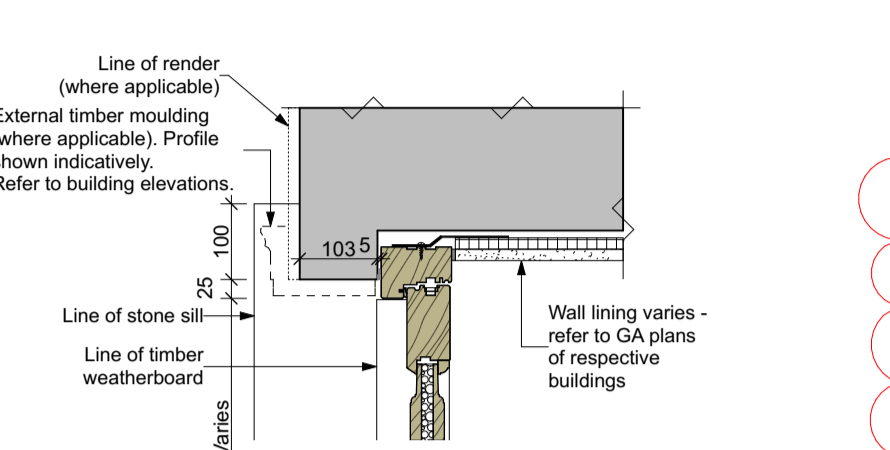
Detail H4 - Typical head detail to door within rendered facade



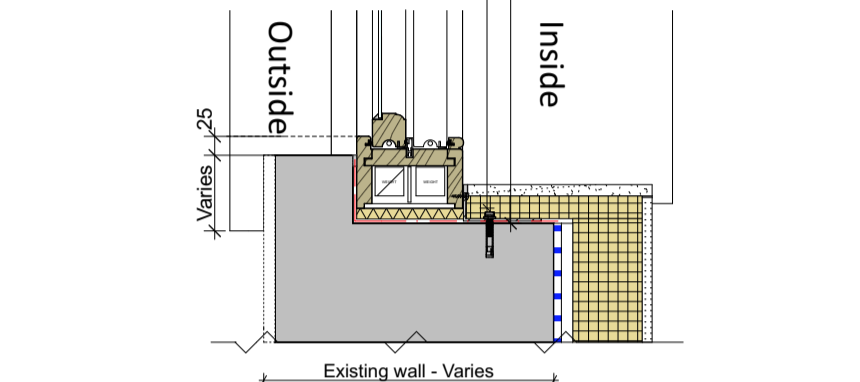
Detail J1 - Typical sash window Jamb



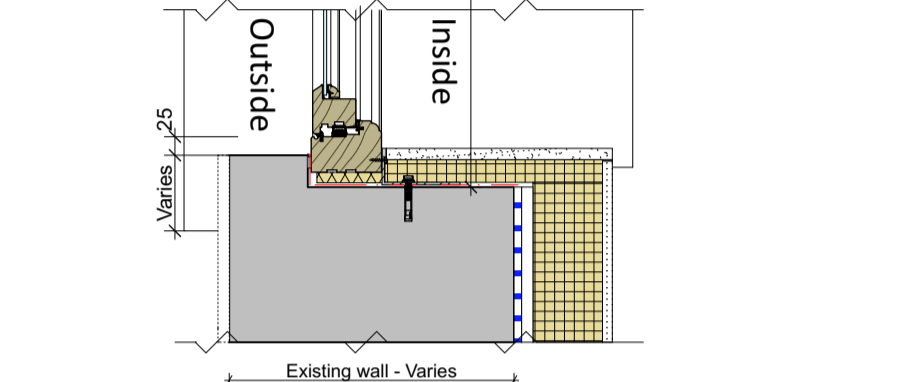
Detail J2 - Typical casement window Jamb



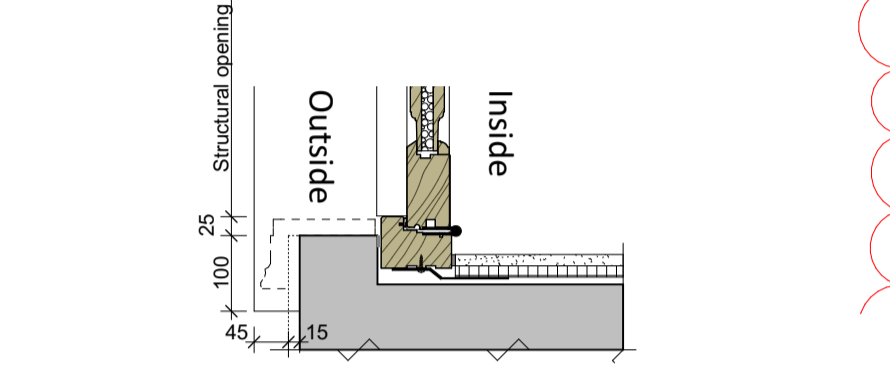
Detail J3 - Typical door jamb with stone sill



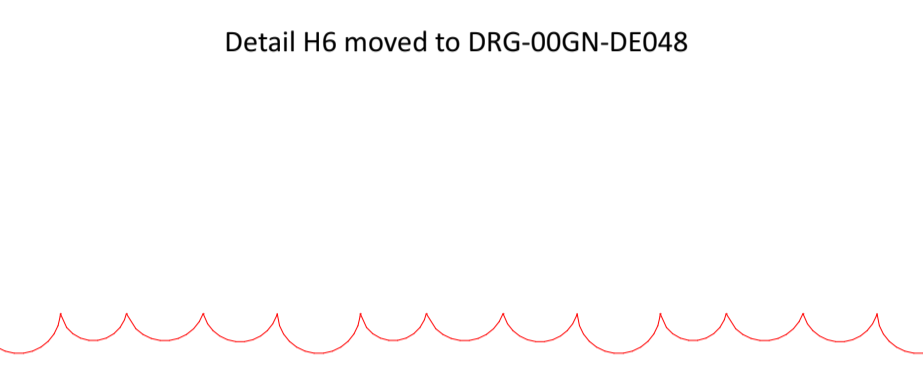
Detail SW1 - Stone sill detail to sash window



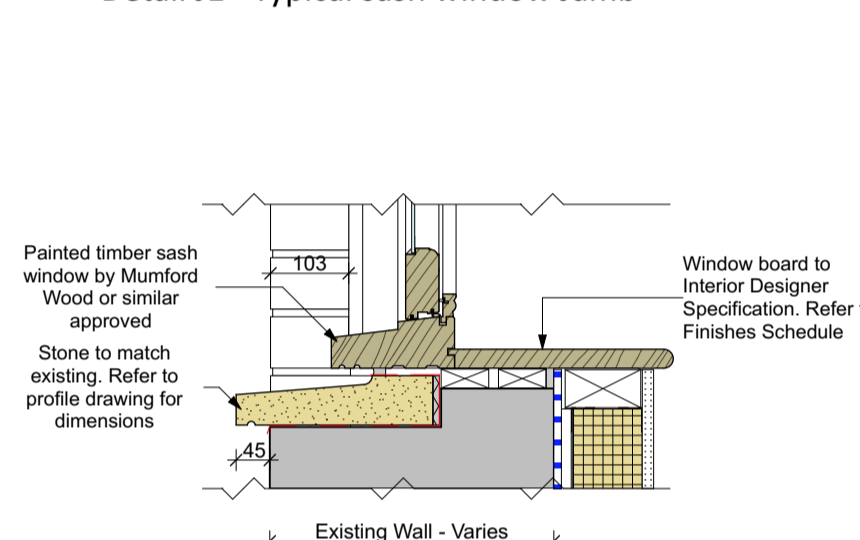
Detail SW2 - Stone sill detail to casement window



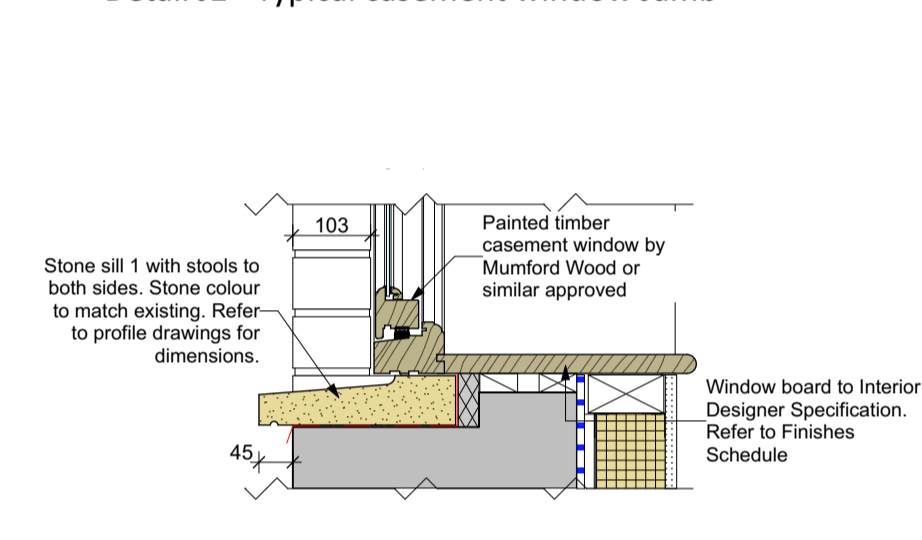
Detail SD1 - Typical stone sill detail with threshold strip to upper floors (opening in)



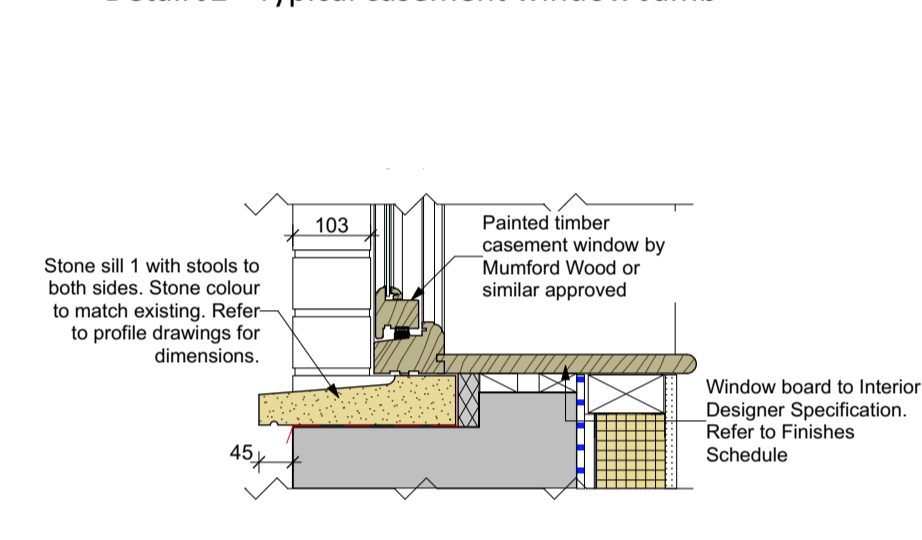
Detail SD1 - Typical stone sill detail with threshold strip to upper floors (opening out)



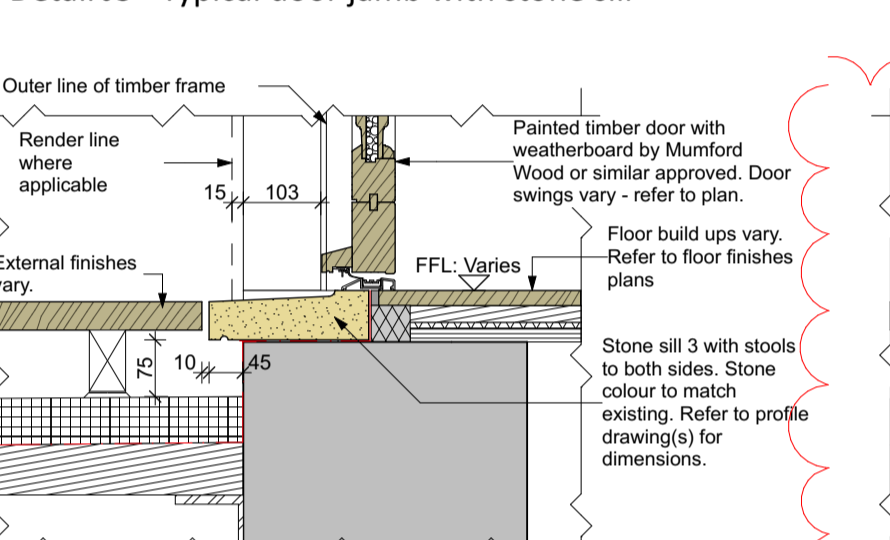
Detail SW3 - Concrete sill detail to sash window - to match existing adjacent window detail at Bay House undercroft



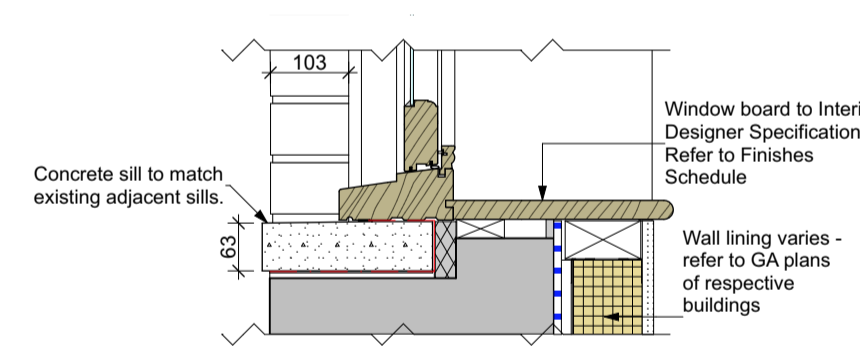
Detail SB1 - Typical brick sill detail to sash window



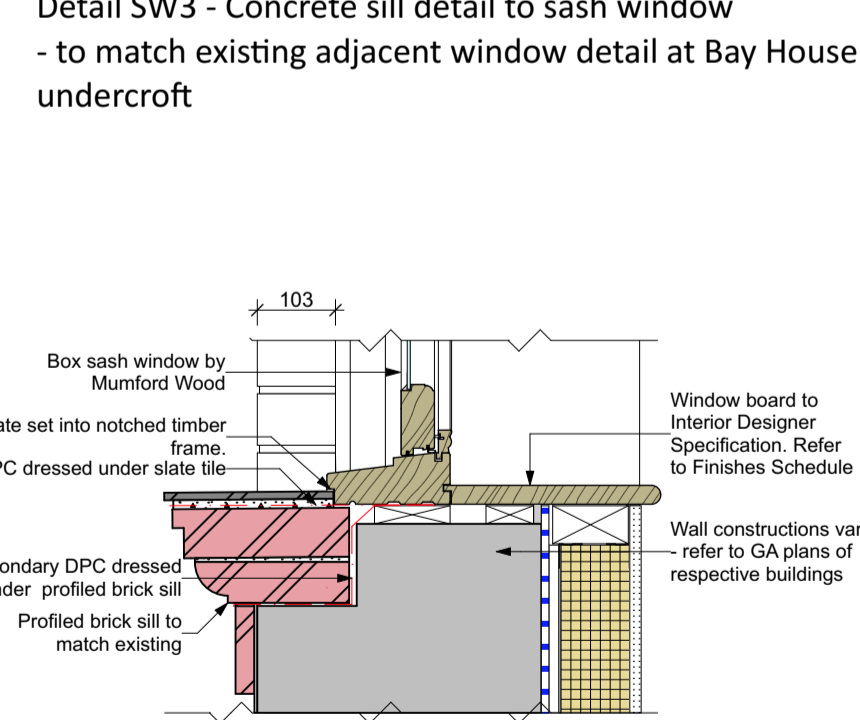
Detail SB2 - Typical brick sill detail to casement window



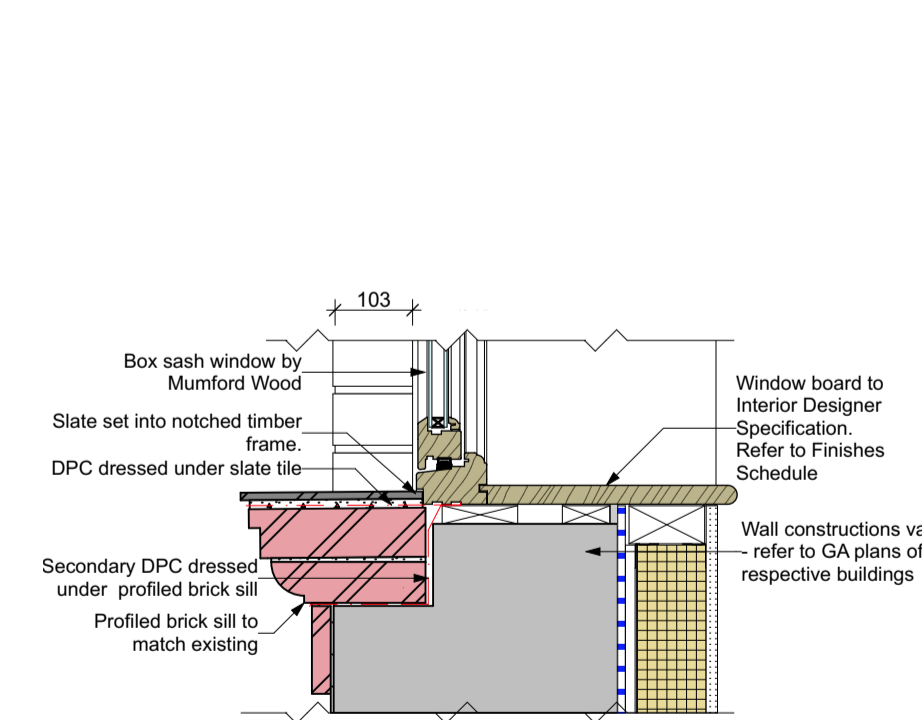
Detail TS1 - Typical glazed door to timber sill detail



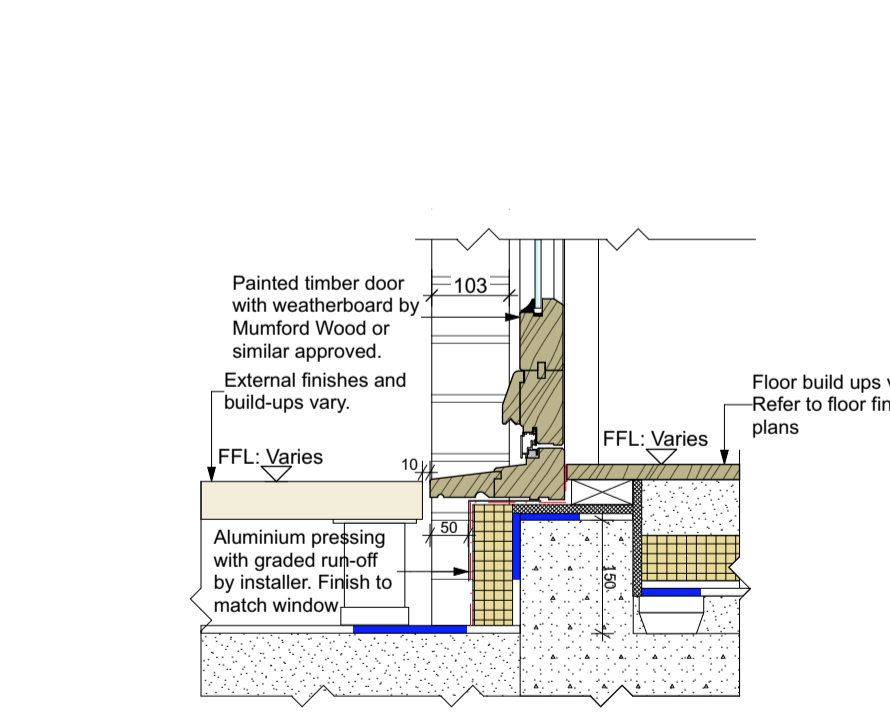
Detail SW3 - Concrete sill detail to sash window - to match existing adjacent window detail at Bay House undercroft



Detail SB1 - Typical brick sill detail to sash window

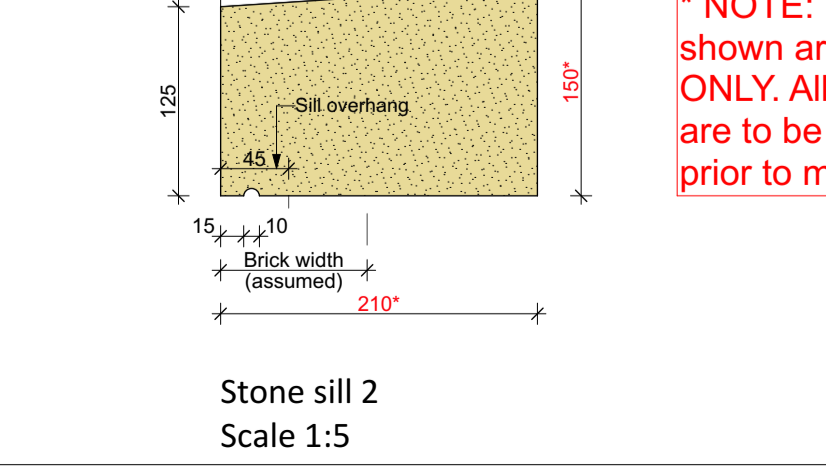
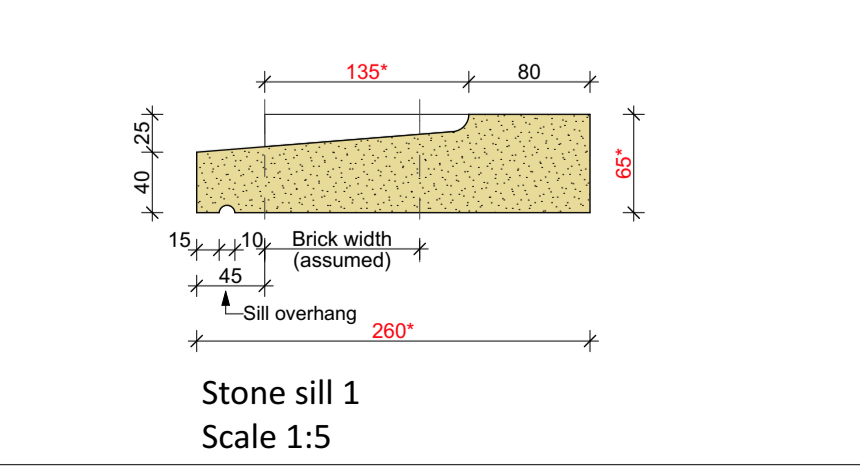


Detail SB2 - Typical brick sill detail to casement window

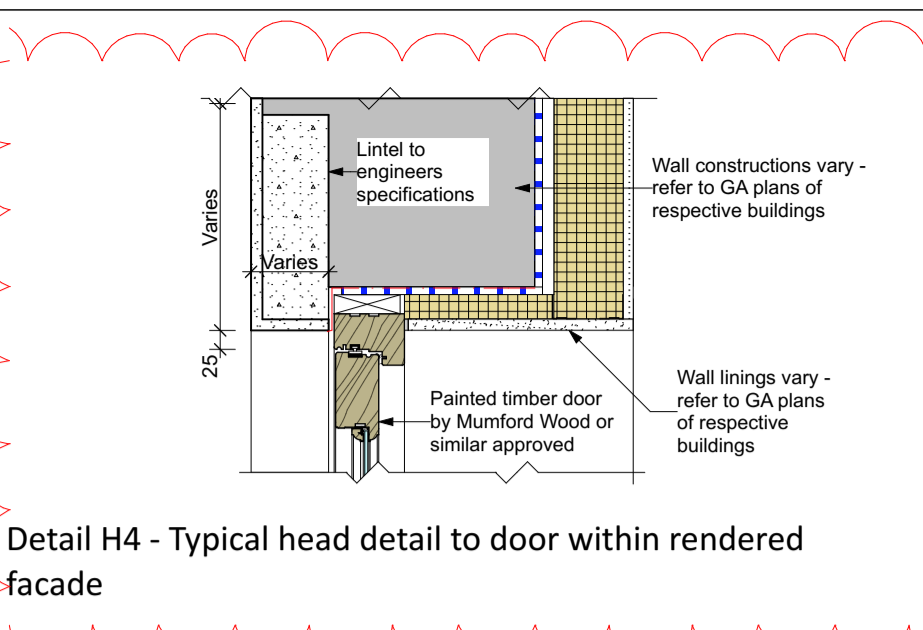
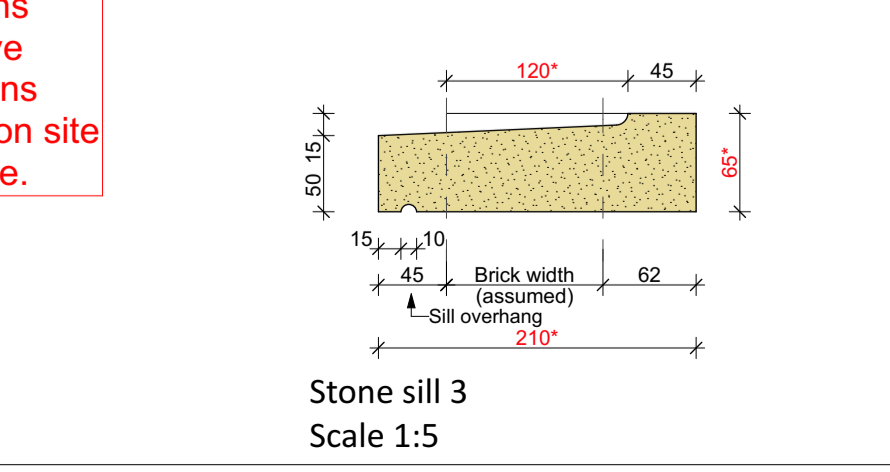


Detail TS1 - Typical glazed door to timber sill detail

NOTE: Site measurements and patterns to be taken from site. For applicable locations please refer to external window and door schedules.



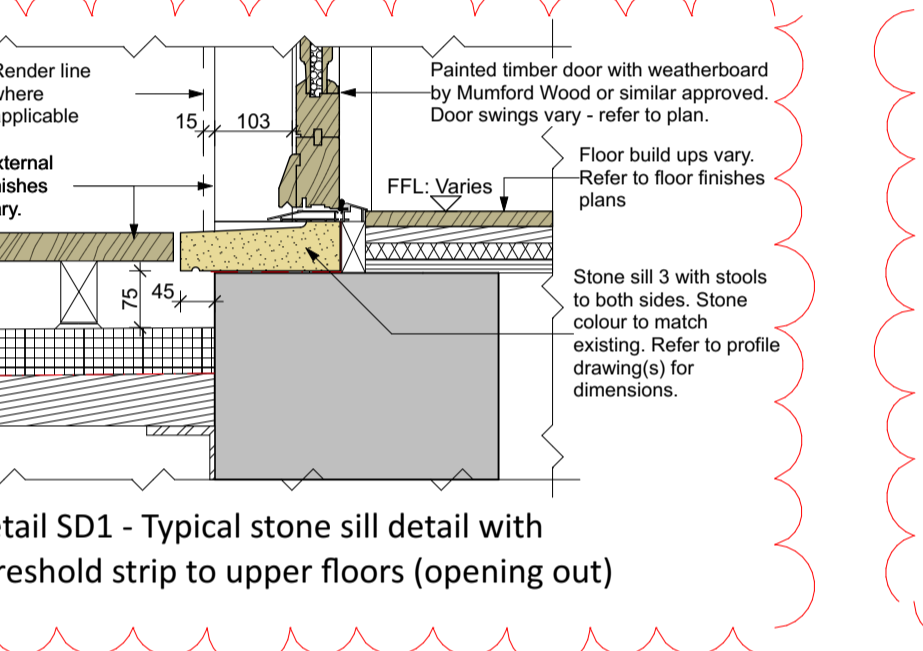
\* NOTE: Dimensions shown are indicative ONLY. All dimensions are to be checked on site prior to manufacture.



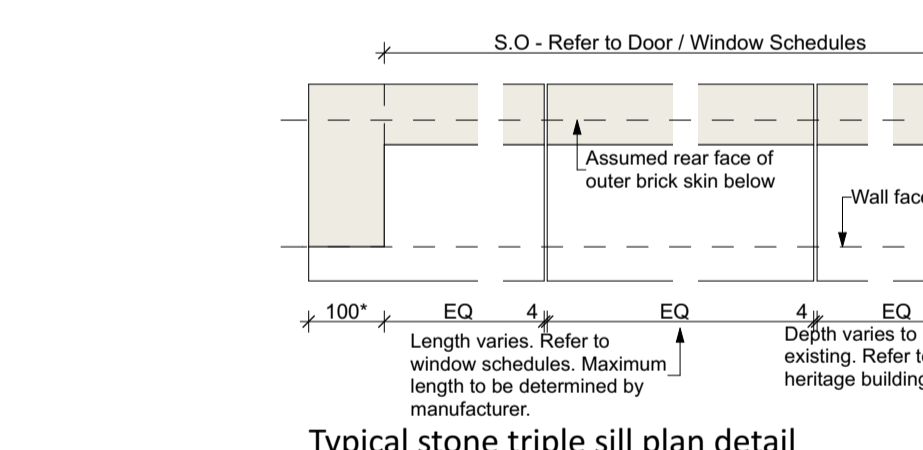
Detail H4 - Typical head detail to door within rendered facade



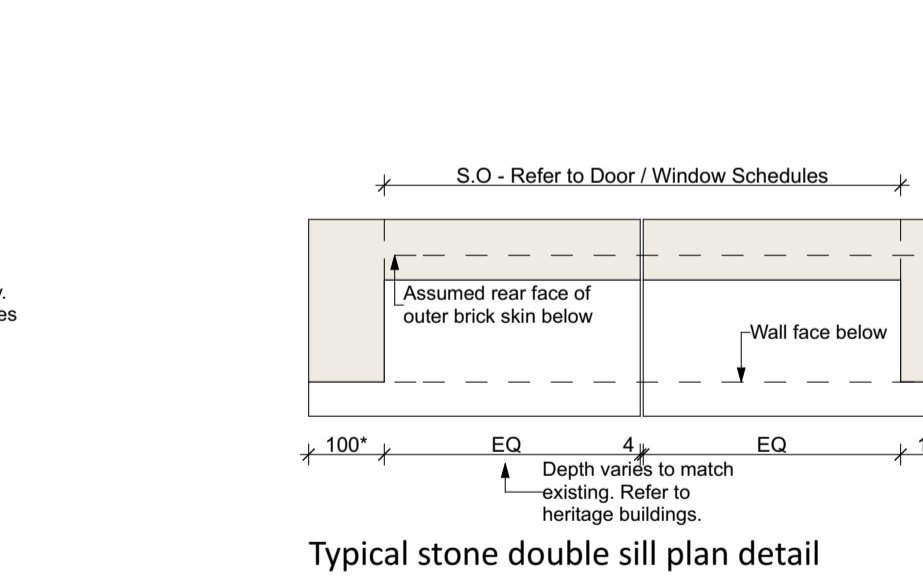
Detail H6 moved to DRG-00GN-DE048



Detail SD1 - Typical stone sill detail with threshold strip to upper floors (opening out)

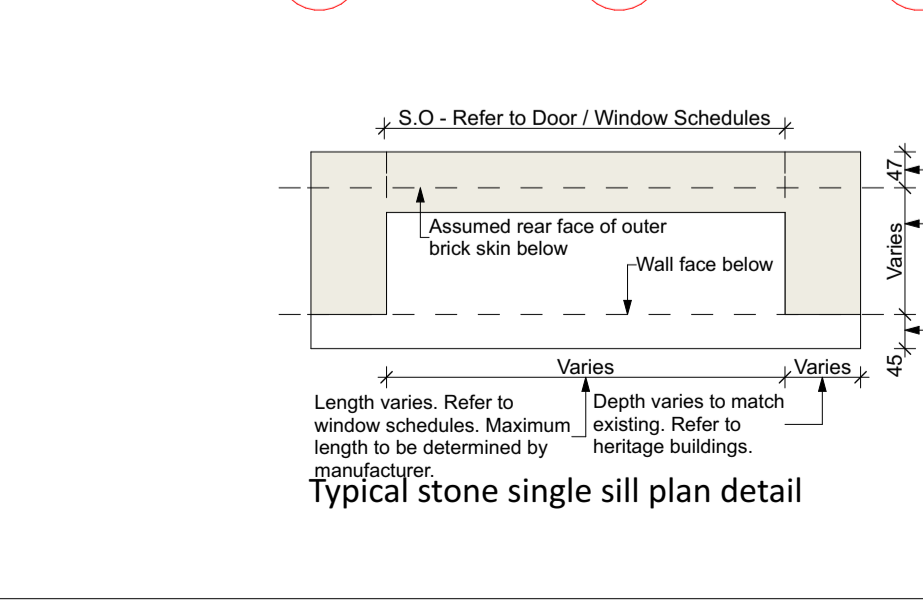


Typical stone triple sill plan detail

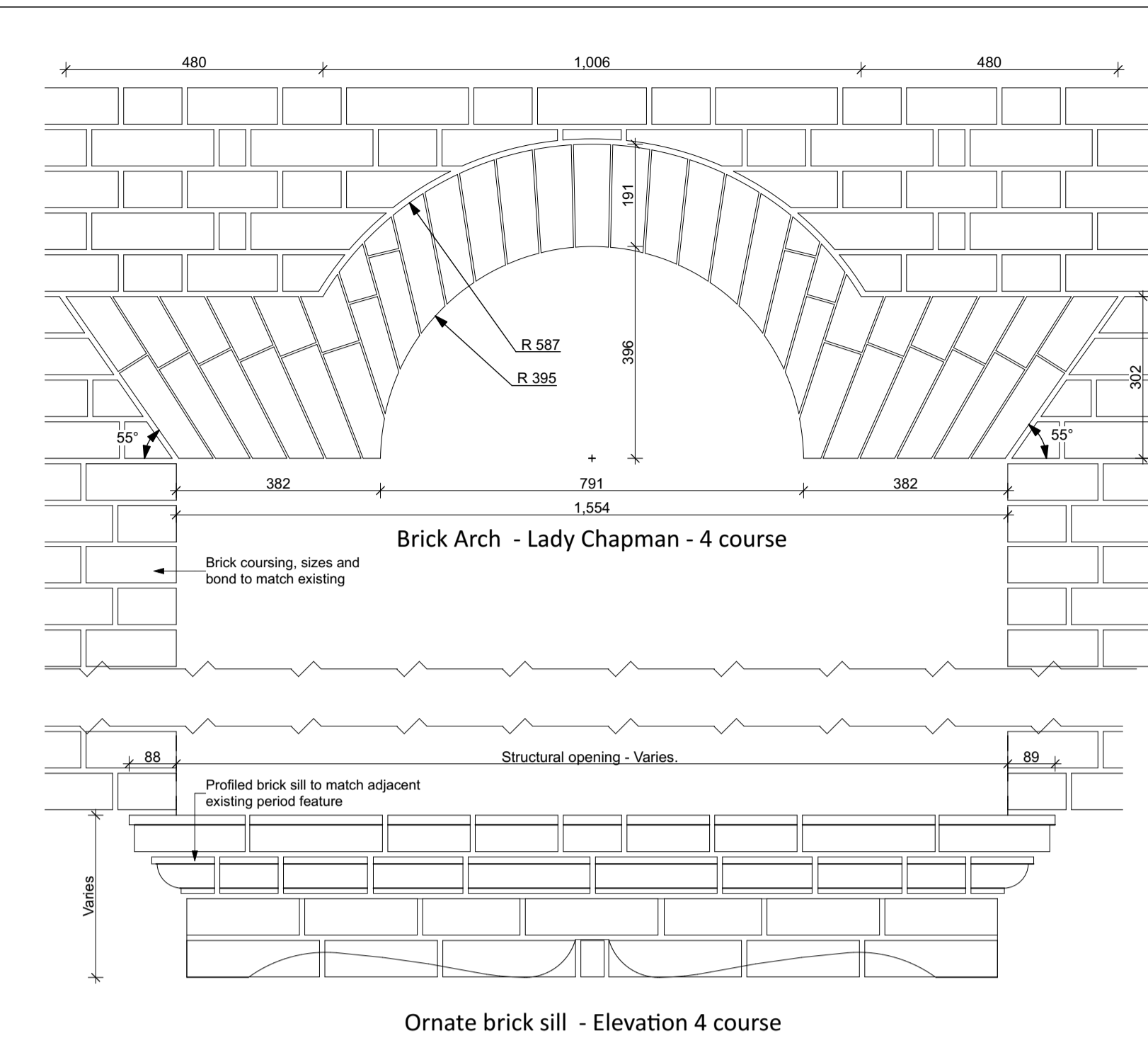


Typical stone double sill plan detail

\* NOTE: Sills to windows / doors with adjacent openings do not require stooing to both ends - e.g. MW-W-03-01A and MW-W-03-01D.



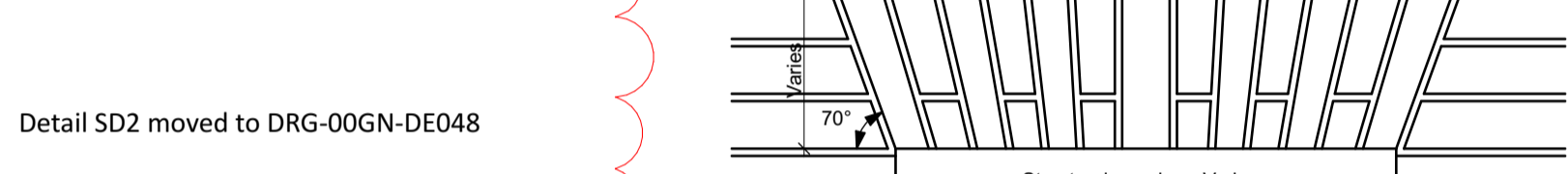
Typical stone single sill plan detail



Brick Arch - Lady Chapman - 4 course



Ornate brick sill - Elevation 4 course



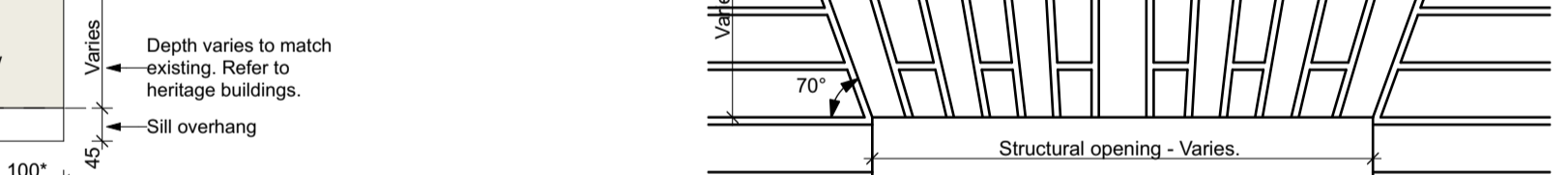
Brick Arch - Typical single door - 3 course



Brick Arch - Typical single door - 4 course

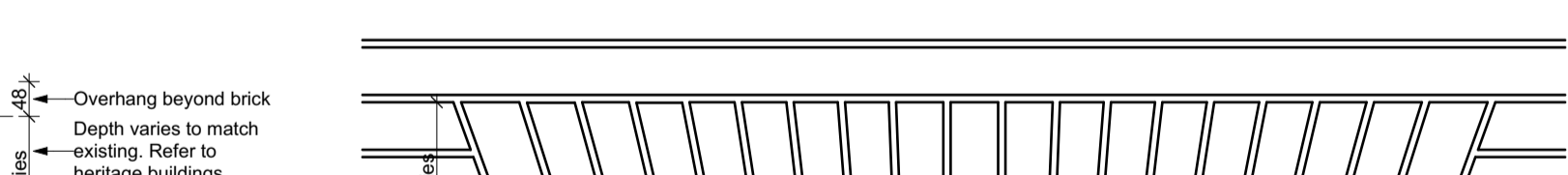


Brick Arch - Typical double door - 3 course

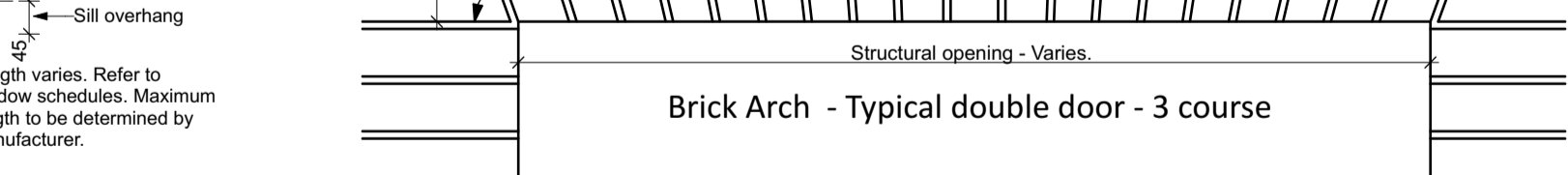


Brick Arch - Typical double door - 4 course

NOTE: Brick arches are to match the predominant adjacent arches on the elevation.



Brick Arch - Typical double door - 3 course



Brick Arch - Typical double door - 4 course



Brick Arch - Typical double door - 3 course



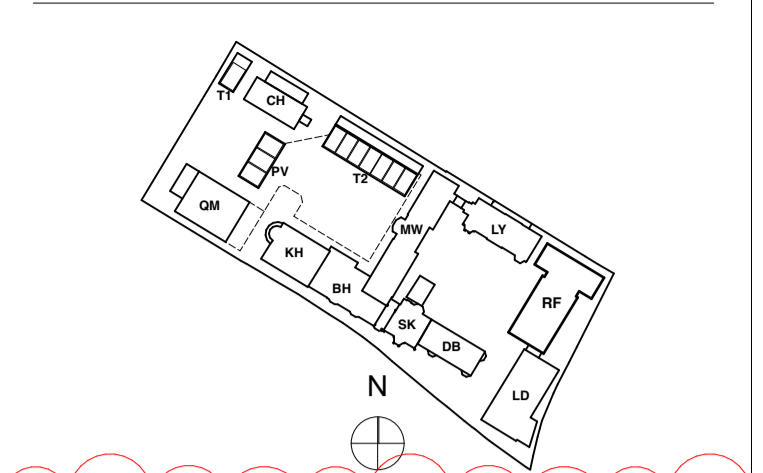
Brick Arch - Typical double door - 4 course



Brick Arch - Typical double door - 3 course

Note: Mortar joint widths shown indicatively only. Mortar joints to match existing brickwork on site. Refer to building elevations for coursing variations.

0 10 50 100mm  
DIMENSION AT ORIGINAL SHEET SIZE  
Contractors must check all dimensions on site. Only figured dimensions are to be worked from. Discrepancies must be reported to the Architect before proceeding. © This drawing is Copyright



KEY PLAN

NOTE:  
These details refer to openings in the existing Heritage buildings only.

Details show design intent and technical methodology only - in all instances new head, sill and jamb details are to visually match existing conditions.

Site conditions may vary from details shown. If existing conditions do not allow for the construction of the details as shown, the architect is to be informed before any further work is undertaken.

Details shown here are to take precedence over information shown in details and sections elsewhere.

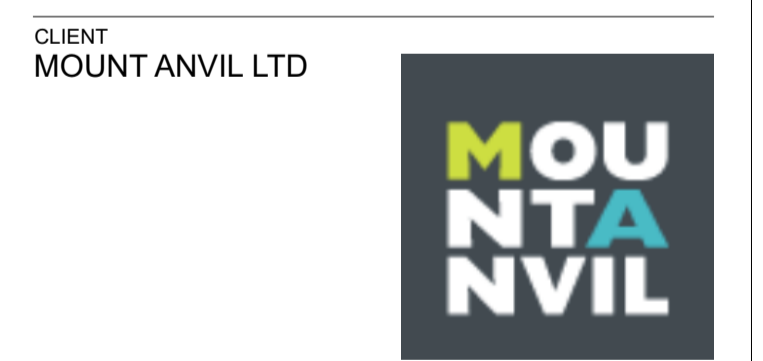
Profiles to doors, windows, glazing bars, frames, etc are shown indicatively only. actual profiles may vary. Manufacturers shop drawings are to be reviewed and approved by the architect before manufacture.

NOTE: Door and window configurations (glazed / solid core / etc.) are indicative - refer to door and window schedules for specific glazing / solid variations. Refer to manufacturers details for window / door frames and leafs.

## FOR CONSTRUCTION

REVISION	DRN	CHKD	DATE
C2	MRR	TW	22/03/2017

Detail Added/Revised: None  
Detail H6 moved to DRG-00GN-DE048  
Detail SD2 moved to DRG-00GN-DE048



PROJECT  
KIDDERPORE AVENUE

DRAWING  
Generally Applicable  
Door and window details - Heritage

SCALE 1:10, 1:5 @ A1 DATE February 2017

DRAWING No. 15 2300  
9000-DRG-00GN-DE047

A & Q PARTNERSHIP (LONDON) LTD  
THE LUX BUILDING, 2-4 HOXTON SQUARE, LONDON N1 6 NU  
Tel: 020 7613 2244 Fax: 020 7613 2642 Email: london@aqp.co.uk  
ARCHITECTURE DESIGN MASTERPLANNING INTERIORS