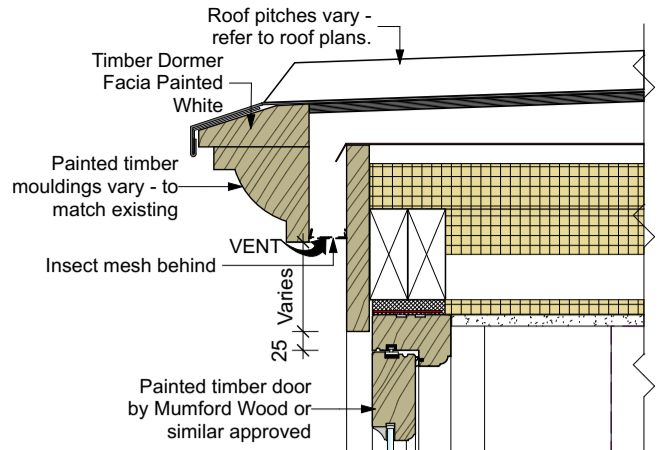
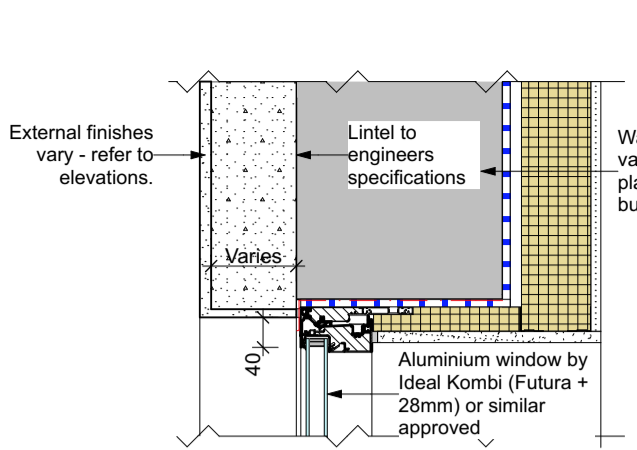


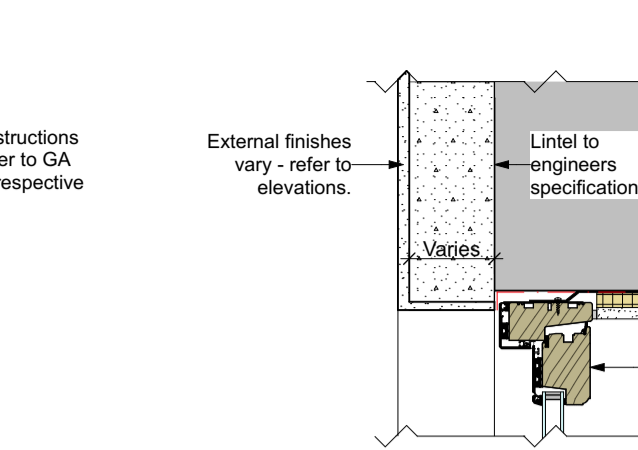
Detail H5 - Typical head detail to fixed fanlight



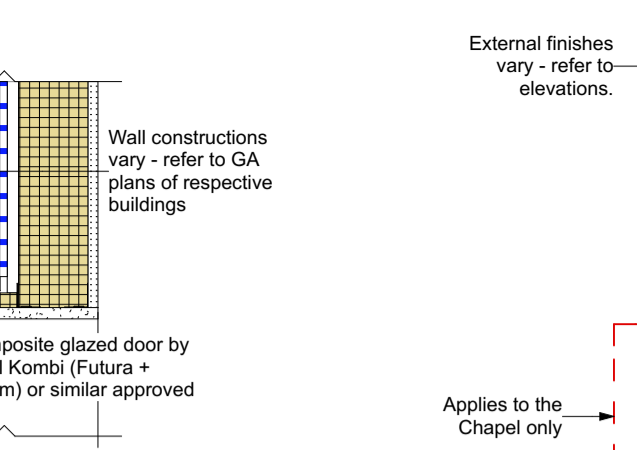
Detail H6 - Typical head detail to door within dormer



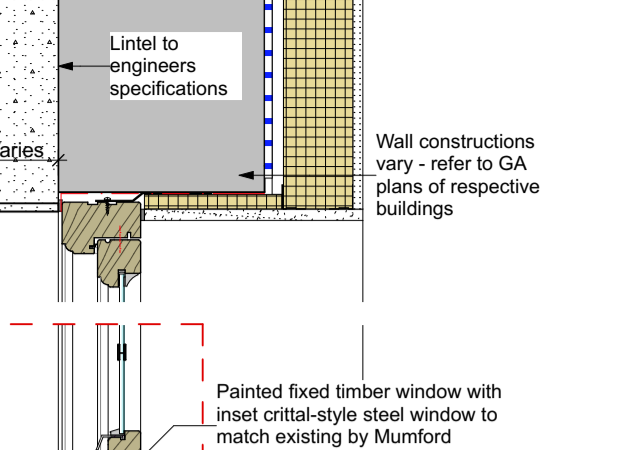
Detail H7 - Typical head detail to fixed aluminium window



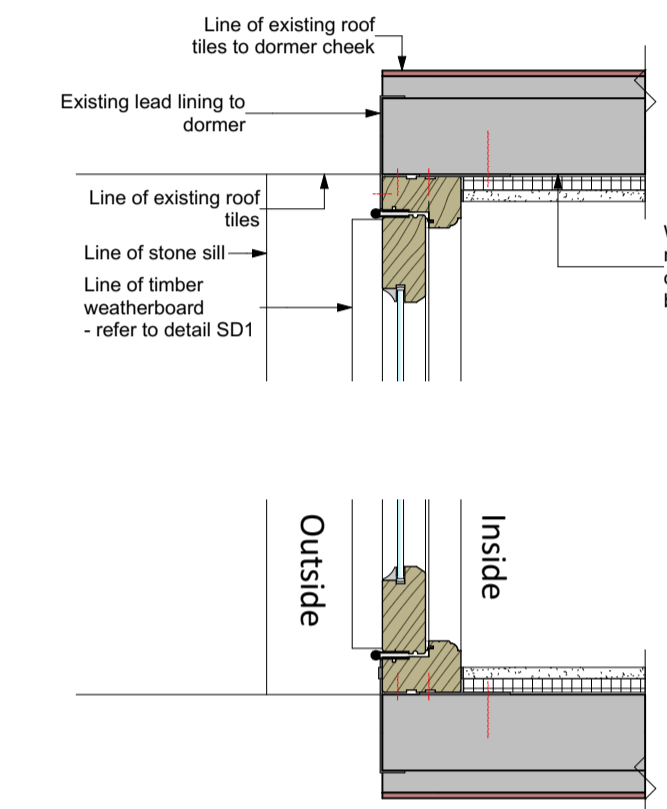
Detail H8 - Typical head detail to composite door



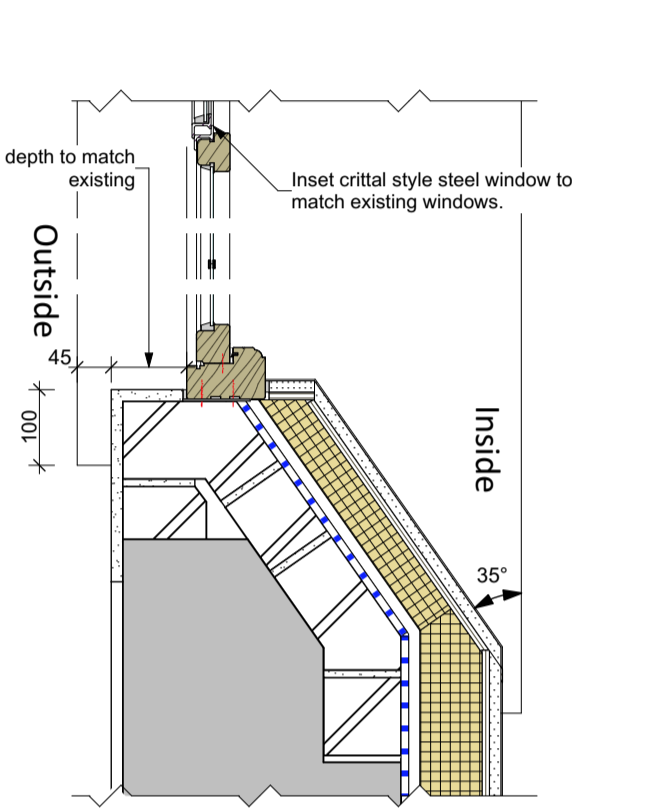
Detail H9 - Typical head detail to fixed window



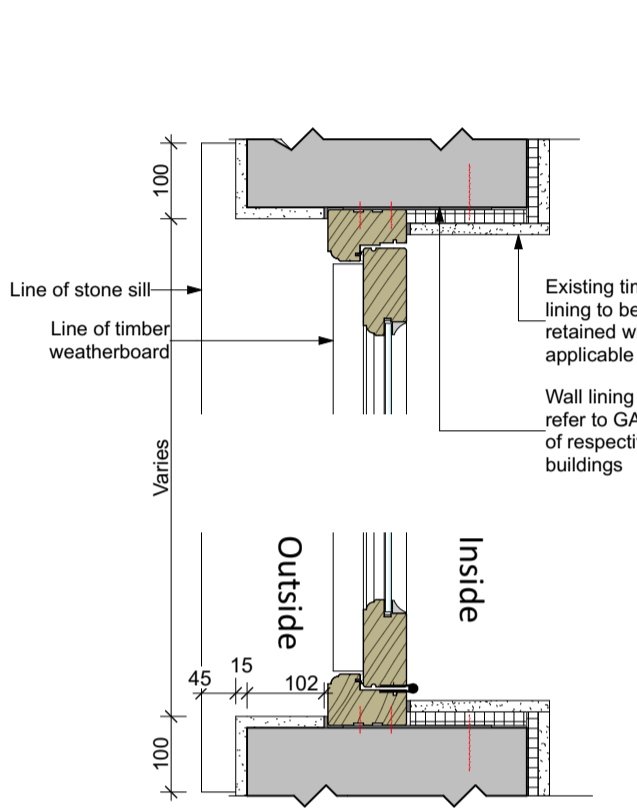
Detail H10 - Typical head detail to casement window



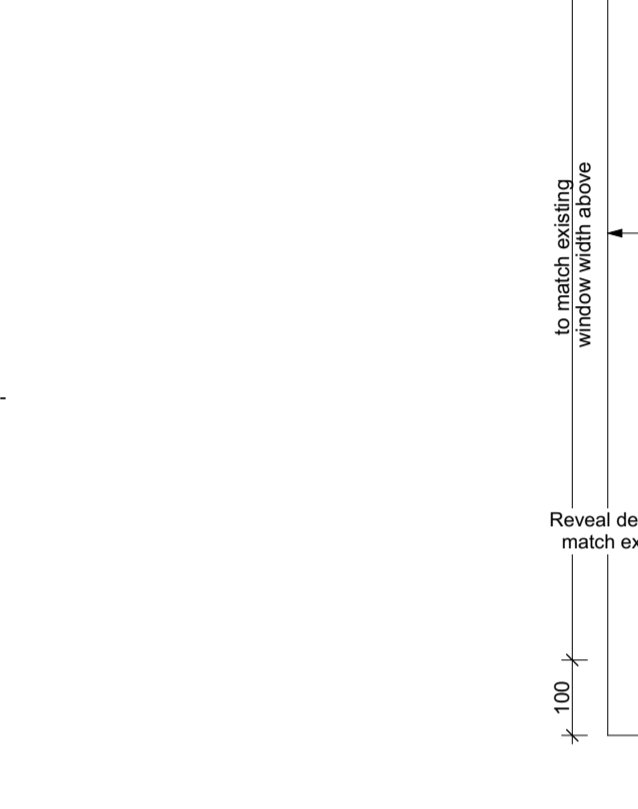
Detail J4 - Glazed door jamb to dormer window



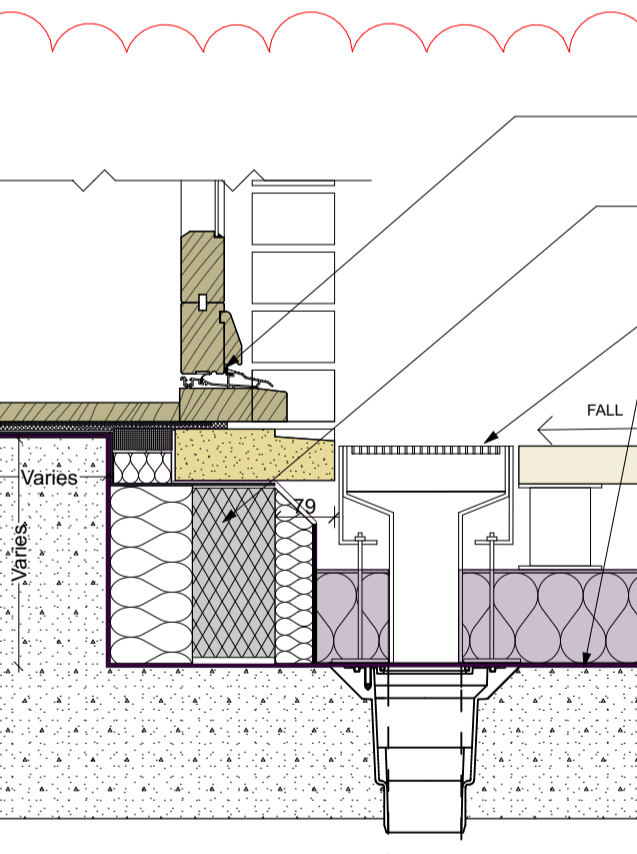
Detail J5 - Chapel fixed window jamb with splayed reveal



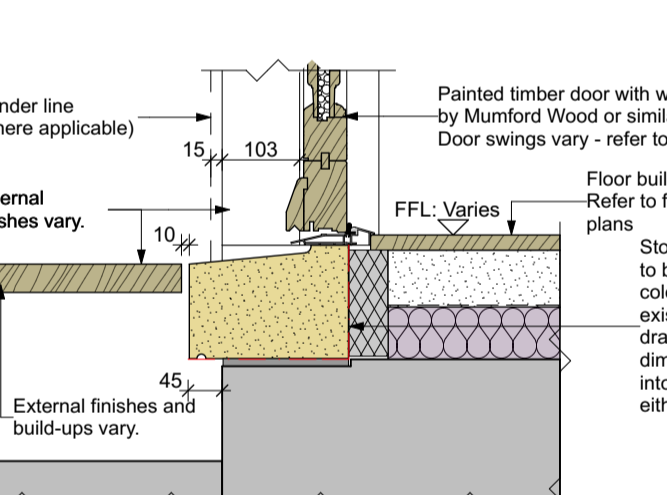
Detail J6 - Typical glazed timber door jamb with stone sill



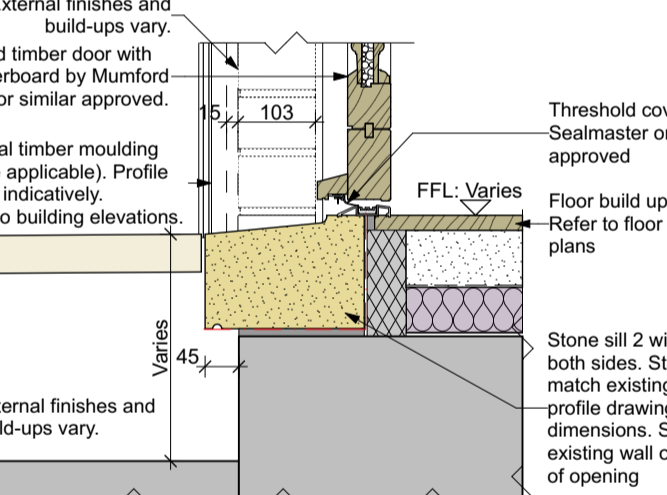
Detail J8 - Chapel splayed reveal door jamb



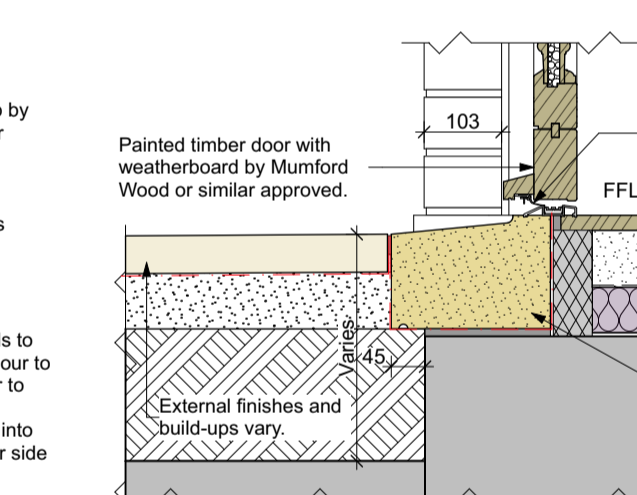
Detail SD6 - Typical panelled door within brick wall to stone sill Detail



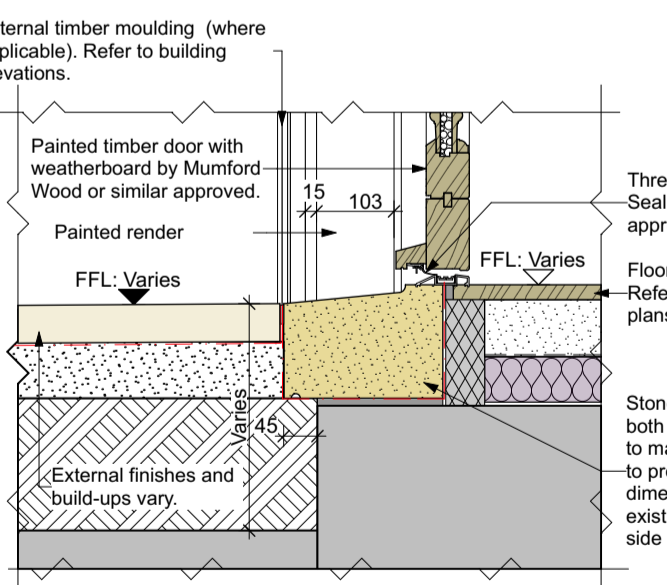
Detail SD2 - Typical panelled door to stone sill detail - ground floor entrance doors (opening out)



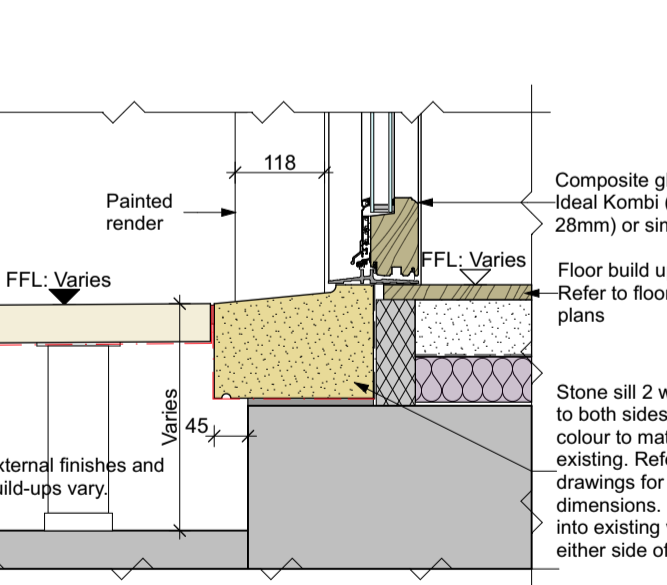
Detail SD2 - Typical panelled door to stone sill detail - ground floor entrance doors (opening in)



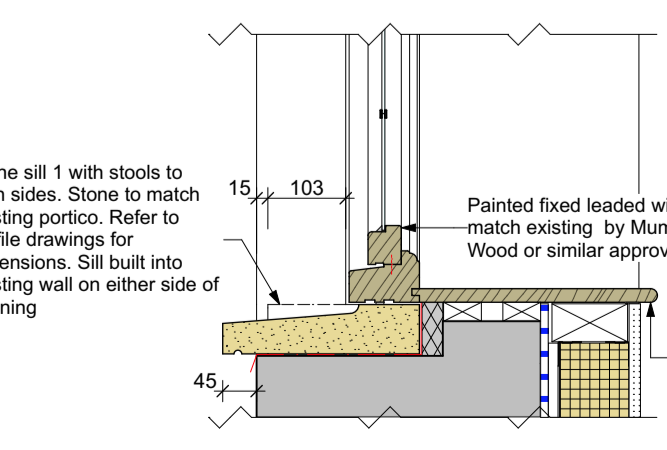
Detail SD3 - Typical panelled door within brick wall to stone sill detail



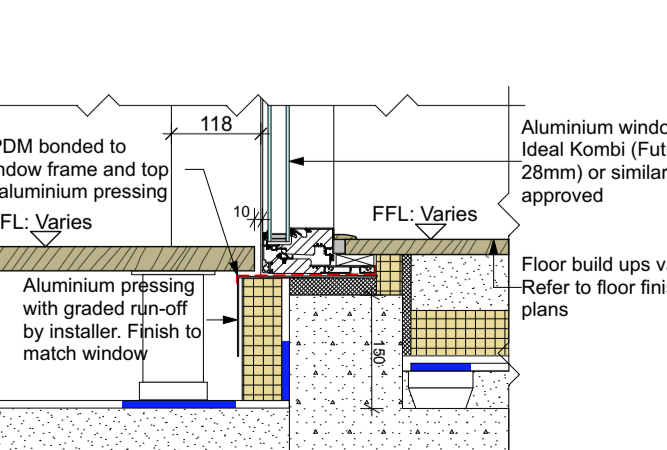
Detail SD4 - Typical panelled door within rendered wall to stone sill



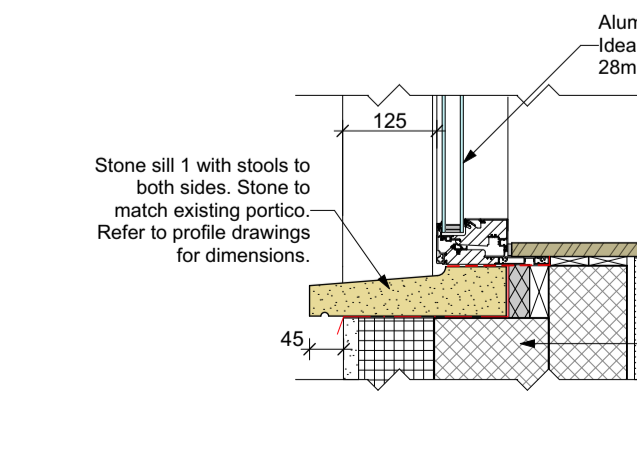
Detail SD5 - Typical glazed composite door to stone sill within rendered wall



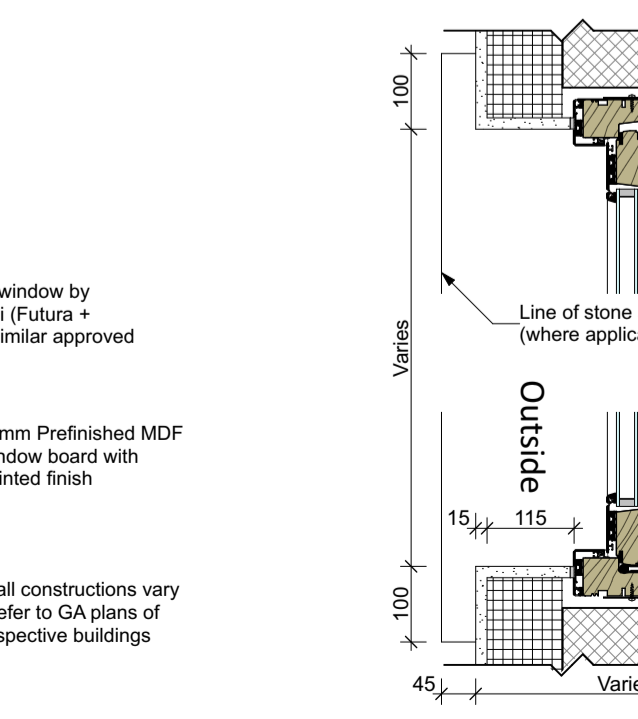
Detail SW4 - Stone sill detail to fixed window



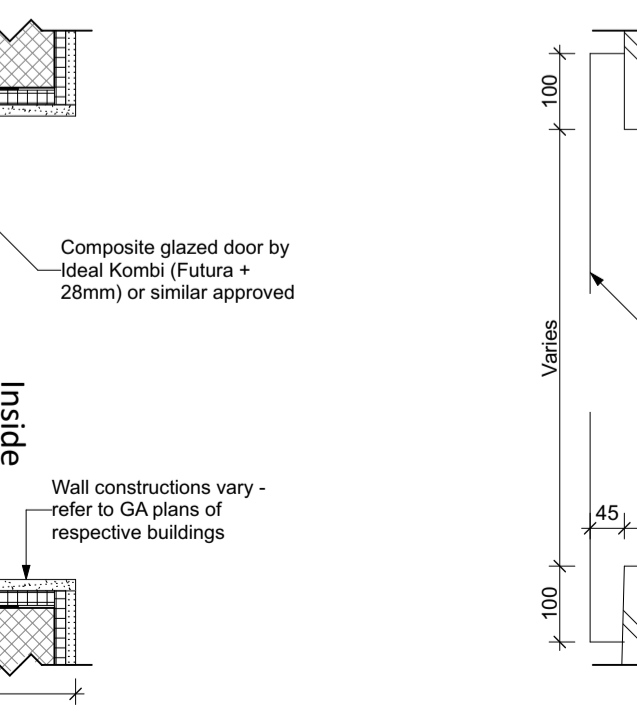
Detail SW5 - Typical fixed aluminium full height window sill



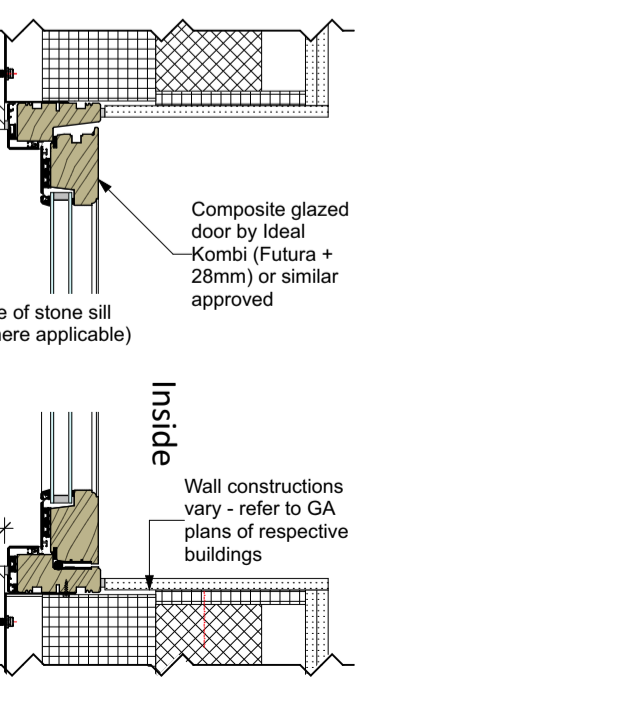
Detail SW6 - Stone sill detail to fixed aluminium window



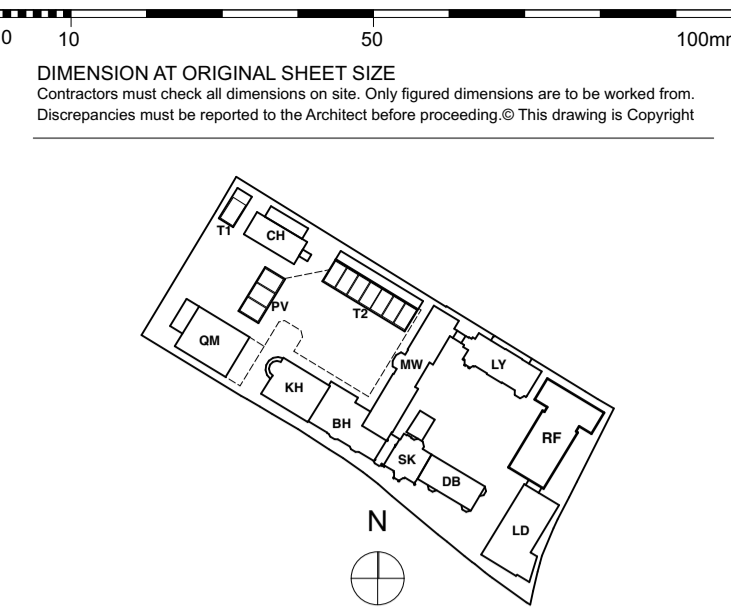
Detail J10 - Typical glazed door jamb in new rendered wall



Detail J11 - Typical glazed door jamb in new brick wall



Detail J12 - Typical casement jamb in new brick wall



KEY PLAN

NOTE:  
These details refer to openings in the existing Heritage buildings only.  
Details show design intent and technical methodology only - in all instances new head, sill and jamb details are to visually match existing conditions.  
Site conditions may vary from details shown. If existing conditions do not allow for the construction of the details as shown, the architect is to be informed before any further work is undertaken.  
Details shown here are to take precedence over information shown in details and sections elsewhere.

Profiles to doors, windows, glazing bars, frames, etc are shown indicatively only, actual profiles may vary. Manufacturers shop drawings are to be reviewed and approved by the architect before manufacture.  
NOTE: Door and window configurations (glazed / solid core / etc.) are indicative - refer to door and window schedules for specific glazing / solid variations. Refer to manufacturers details for window / door frames and leafs.

NOTE: WINDOW AND DOOR SCHEDULES REFER TO THIS DRAWING TO IDENTIFY THE VARIOUS LOCATIONS OF EACH DETAIL. THIS DRAWING IS TO BE READ IN CONJUNCTION WITH THE SCHEDULES.

FOR CONSTRUCTION

REVISION	DRN	CHKD	DATE
C1	Detail SD2 moved to DRG-000N-DE048	MRR	TW 22/03/2017
C2	Window board moved	KJC	ST 28/04/2017
C3	Note Added/Revised	MRR	ST 02/06/2017
C4	Detail Added/Revised	GC	KJC 13/06/2017



PROJECT  
KIDDERPORE AVENUE  
DRAWING  
Generally Applicable  
Door and window details 2 - Heritage

SCALE 1:10 @ A1 DATE February 2017  
DRAWING No. 15 230 DRAWN BY GC  
9000-DRG-00GN-DE048 REV C4  
A & Q PARTNERSHIP (LONDON) LTD  
THE LUX BUILDING, 2-4 HOXTON SQUARE, LONDON N1 6NU  
Tel: 020 7613 2244 Fax: 020 7613 2642 Email: london@aqp.co.uk  
ARCHITECTURE DESIGN MASTERPLANNING INTERIORS