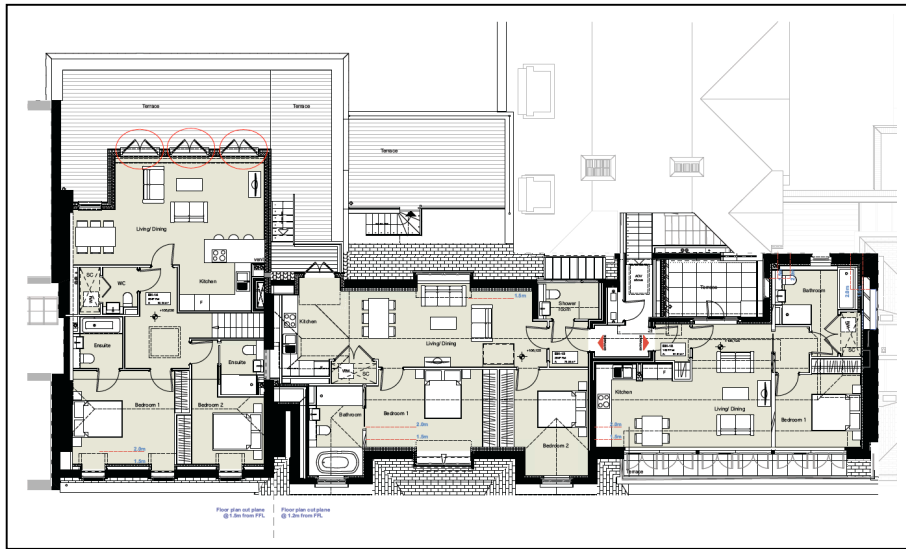


KIDDERPORE AVENUE · HAMPSTEAD

BAY HOUSE

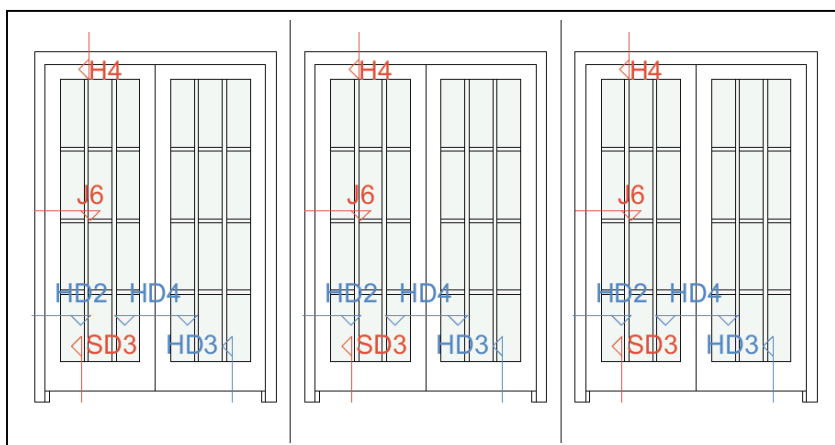
REVISIONS TO THREE EXTERNAL DOORS

As part of the conversion and remodelling of Bay House to form individual apartments, a new extension is formed at second floor level, abutting Kidderpore Hall. The north face of the extension is set back from the main façade and contains three glazed doors facing onto a terrace.



The doors were intended to have a clerestory light over each pair of doors. The design and detail of these doors was approved under LPA Ref: 2017/0188/L.

Since then, as construction detailing has been able to progress linked with the opening up of the existing building, the level of the terrace has been amended, affecting the height of the doors. As a consequence the doors have been remodelled to suit the adjusted size.



All other aspects of the opening and door detailing remain as previously approved.