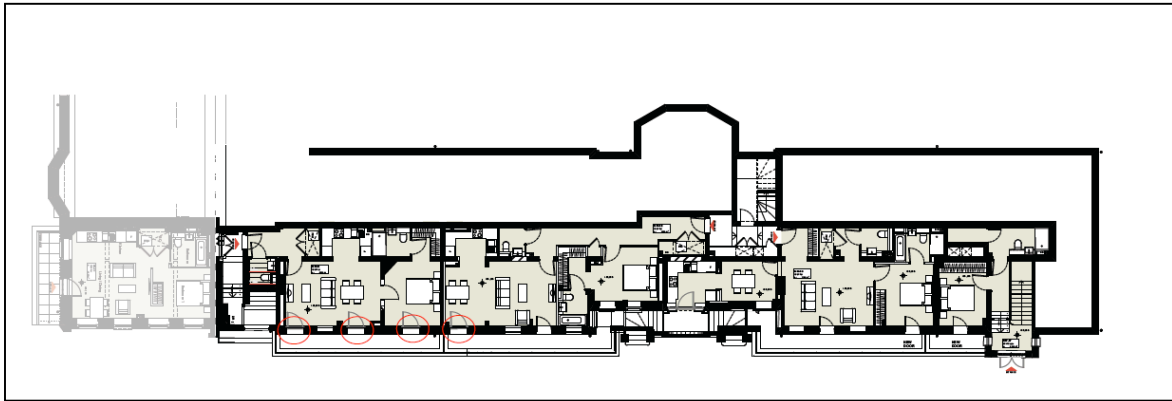


KIDDERPORE AVENUE · HAMPSTEAD

MAYNARD WING

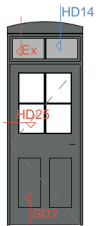



REVISIONS TO FOUR EXTERNAL DOORS

As part of the conversion of Maynard Wing lower ground floor, the floor level is lowered to provide suitable headroom. In doing so it is necessary to replace four existing doors with taller versions, but in similar style.



This proposal has already received approval under LPA Ref: 2017/0189/L.

Since then, works on site have revealed that the head of the existing door is a spandrel panel in front of the floor construction. As a consequence the door design has been amended to undertake a similar masking of the floor.

MW-ED-LG-02	MW-ED-LG-03	MW-ED-LG-04	MW-ED-LG-05
N/A	N/A	N/A	N/A
1,055x2,555	1,055x2,555	1,055x2,555	1,055x2,555
1,045x2,525	1,045x2,525	1,045x2,525	1,045x2,525
985x2,660	985x2,635	985x2,635	985x2,635
			
Existing	Existing	Existing	Existing
New Door	New Door	New Door	New Door
Single Glazed, Opaque fanlight	Single Glazed, Opaque fanlight	Single Glazed, Opaque fanlight	Single Glazed, Opaque fanlight
GB8	GB8	GB8	GB8
Black	Black	Black	Black
Timber door with 4.no panes. Fixed glazed fanlight with boxing behind.	Timber door with 4.no panes. Fixed glazed fanlight with boxing behind.	Timber door with 4.no panes. Fixed glazed fanlight with boxing behind.	Timber stable door with 4.no panes. Fixed glazed fanlight with boxing behind.

All other aspects of the jamb details to the existing opening and the door construction, remain as previously approved.