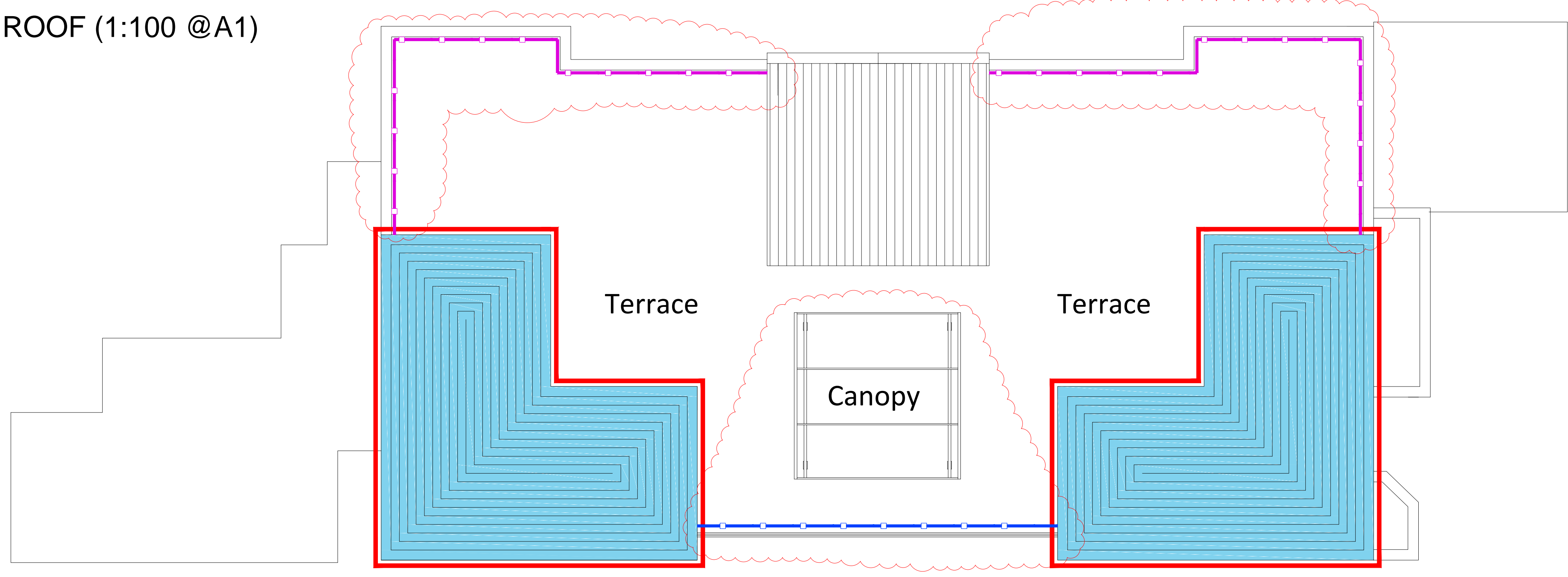
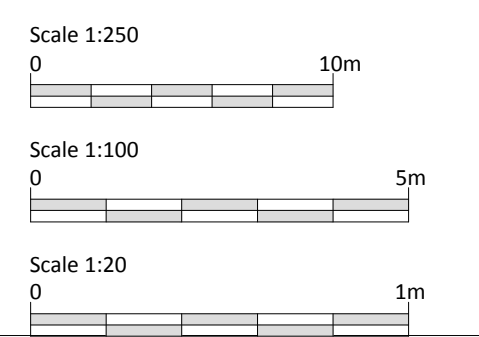


ROOF (1:100 @A1)

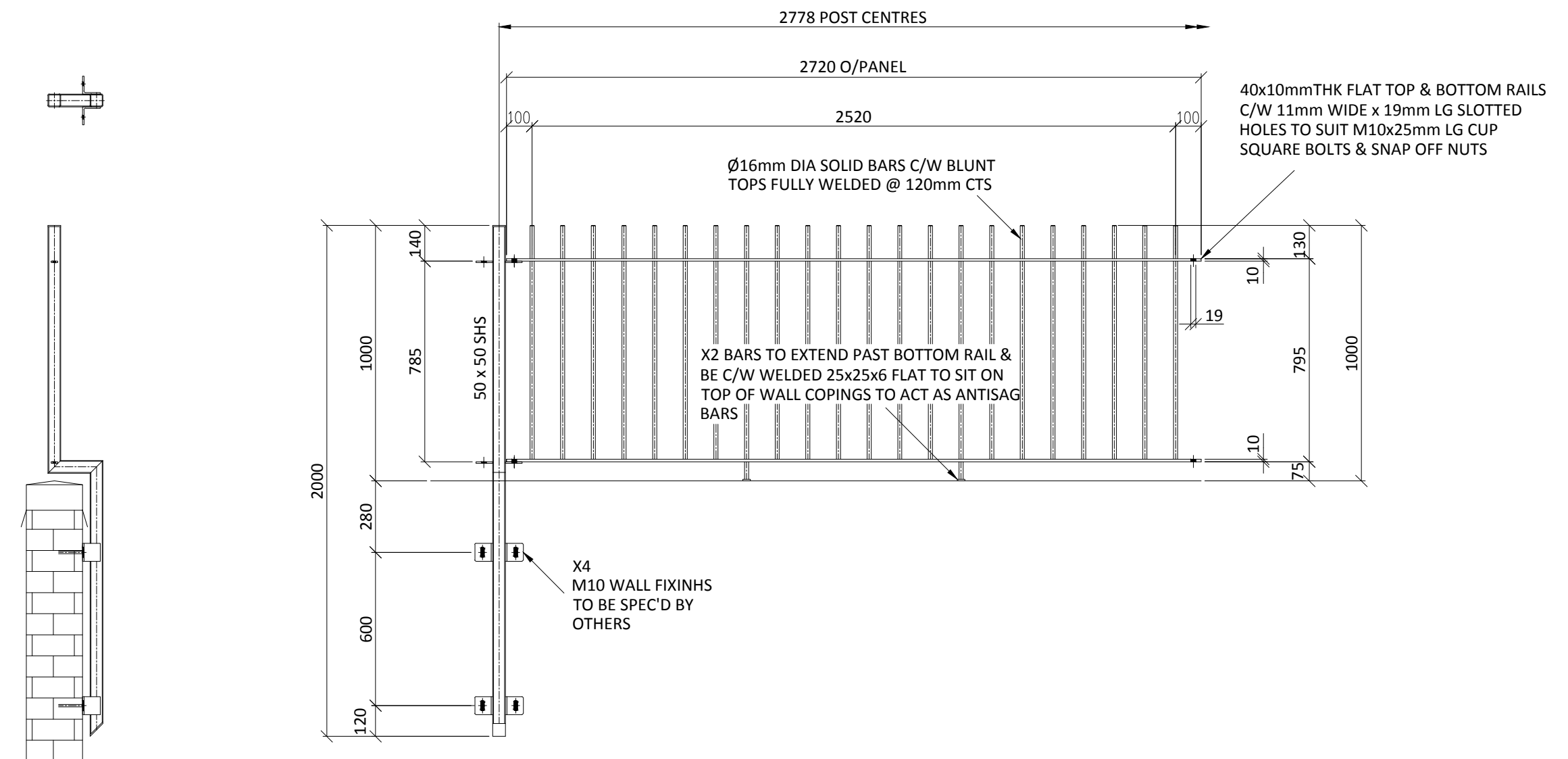


**NOTES**  
 Do not scale dimensions from this drawing except for Local Authority planning purposes.  
 The contractor is responsible for checking dimensions, tolerances and references. Any discrepancies to be verified with the Project Manager before proceeding with the works.  
 This drawing is copyright to DHP and may not be reproduced in any form without prior written consent.  
 All current drawings and specifications for the project must be read in conjunction with the designers hazard and environment assessment record.

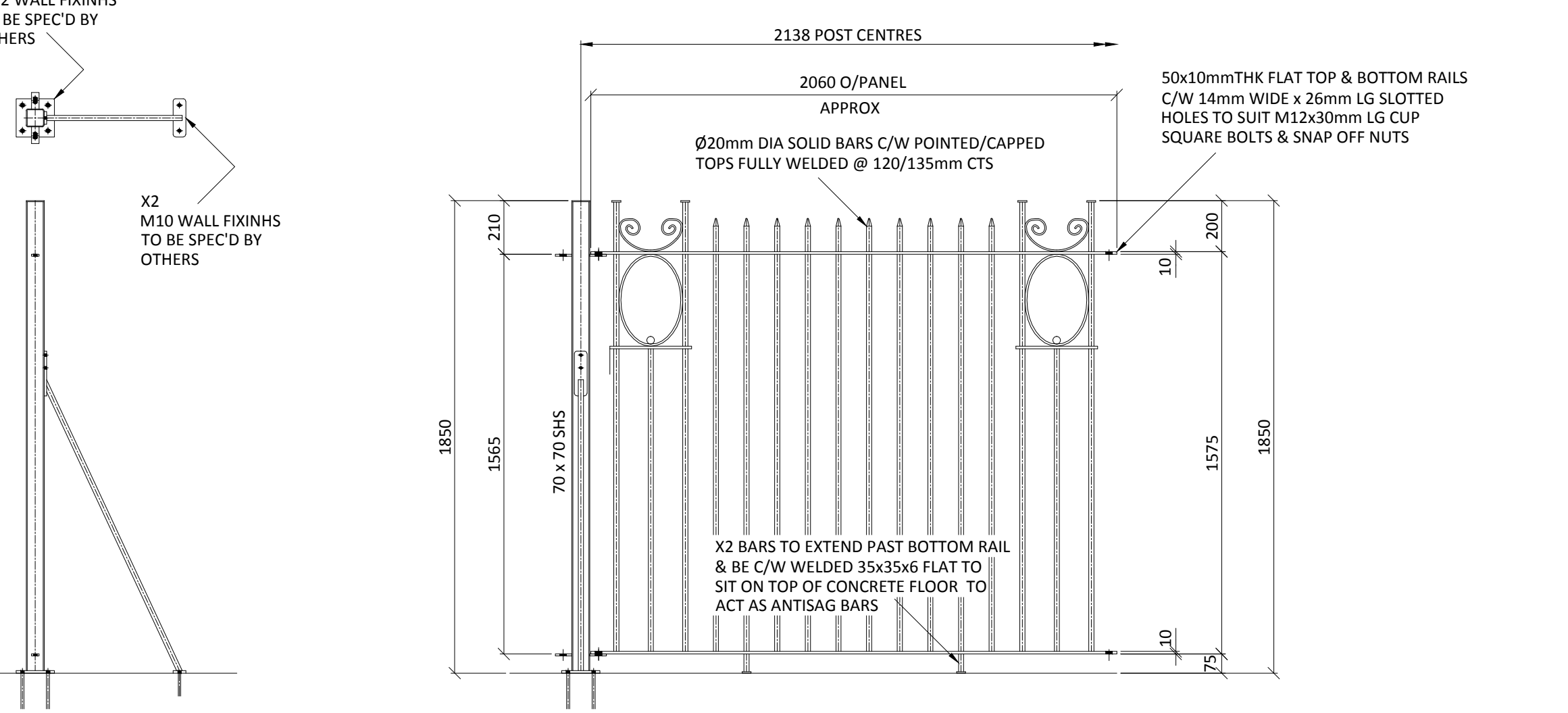


**KEY:**  
 Metal Fencing - Type 1  
 Metal Fencing - Type 2

Type 1 Fencing (1:20)



Type 2 Fencing (1:20)



Site Plan (1:250 @A1)



| TD  | 01.08.17 | Issued For Comment | MG  |
|-----|----------|--------------------|-----|
| Rev | Date     | Description        | Chk |

243 Brooklands Road  
 Weybridge  
 Surrey KT13 0RH  
 T 01932 850100  
 W www.dhpuk.co.uk



Project  
 St Dominic's Catholic  
 Primary School  
 Camden

Drawing  
 Roof, Site Plan  
 &  
 Fencing Details

|                 |      |             |                    |
|-----------------|------|-------------|--------------------|
| Drawn By        | JW   | Date        | 23/04/15           |
| Project Manager | SD   | Scale       | 1:250, 1:100, 1:20 |
| Project No.     | 5767 | Drawing No. | 2010               |
|                 |      | Stage/Rev   | T/0                |