

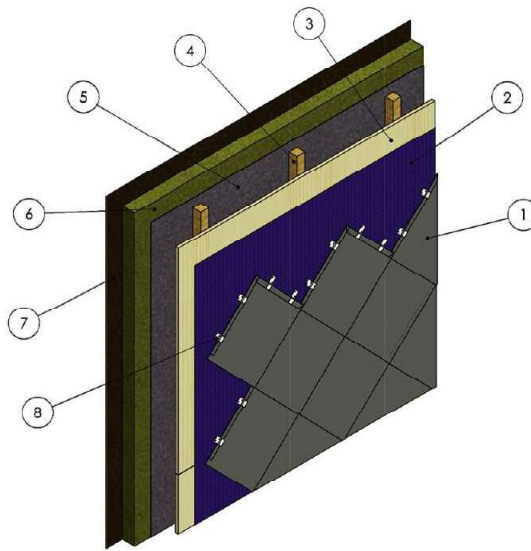
## Shingles

Shingles can be manufactured in zinc, copper, brass, bronze, stainless steel, pre-coated aluminium or anodised aluminium.

The variations in shingle style, size and finish gives an infinite amount of options available to the specifier.

The thickness varies with material but generally ranges from 0.5mm to 1.0mm. Shingles are normally installed to a ventilated plywood substrate, however other substrates can be considered.

A standard range of details are available, along with technical assistance on a project by project basis.

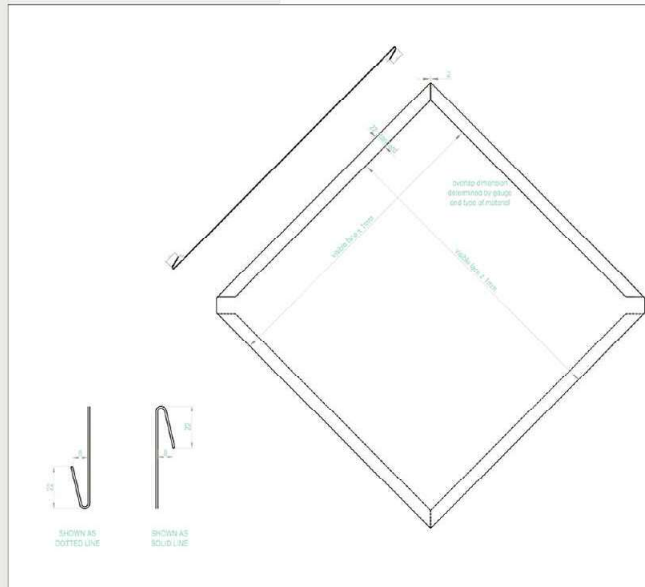


1	Metal Shingles
2	Breather Membrane
3	18mm WBP Plywood
4	Timber Batten
5	Breather Membrane
6	Insulation
7	Vapour Control Layer
8	Fixing Clip

Shingle Cladding on Ventiladed Plywood

**metal solutions**

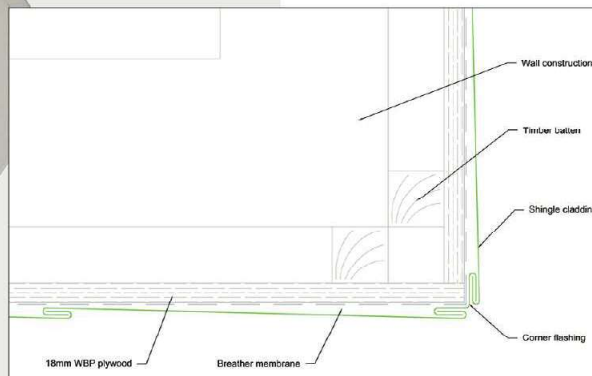
Metal Solutions Ltd  
Sofa Street, Bolton, BL1 4QE  
Tel: +44 (0)1204 491 800  
mail@metalsolutions.uk.com  
www.metalsolutions.uk.com  
www.roofing-tools.com



SYSTEM	Shingle	DRAWING No.	Shingle -2	REVISION
TITLE	Bold Diamond Shingle	DATE	25/04/11	SCALE
				1:2 @ A3

**metal solutions**

Metal Solutions Ltd  
Sofa Street, Bolton, BL1 4QE  
Tel: +44 (0)1204 491 800  
mail@metalsolutions.uk.com  
www.metalsolutions.uk.com  
www.roofing-tools.com



SYSTEM	Shingle Cladding on Ventiladed Plywood	DRAWING No.	SH-C-VP-EX CORNER	REVISION
TITLE	External Corner	DATE	25/04/11	SCALE
				1:2 @ A3

**metal solutions**

Metal Solutions Ltd  
Sofa Street, Bolton, BL1 4QE  
Tel: +44 (0)1204 491 800  
mail@metalsolutions.uk.com  
www.metalsolutions.uk.com  
www.roofing-tools.com

