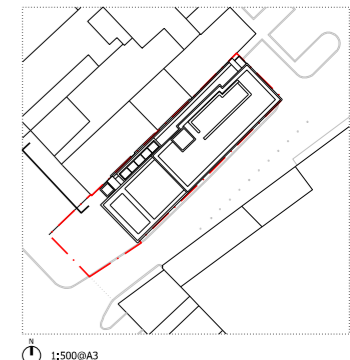
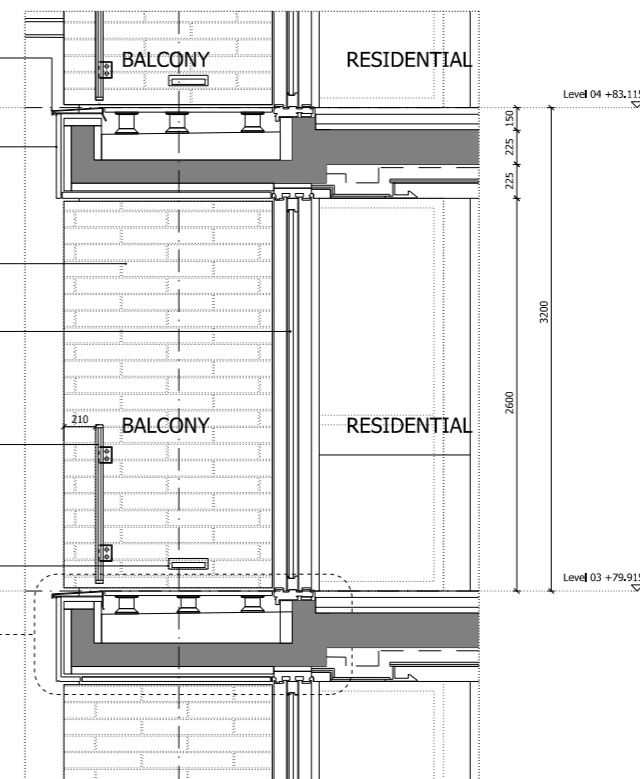


NOTES:  
 DO NOT SCALE FROM THIS DRAWING.  
 ALL DIMENSIONS TO BE CHECKED ON SITE.  
 ALL OMISSIONS AND DISCREPANCIES TO BE REPORTED TO THE ARCHITECT IMMEDIATELY.  
 ALL RIGHTS RESERVED. THIS WORK IS COPYRIGHT AND CANNOT BE REPRODUCED OR COPIED OR MODIFIED IN ANY FORM OR BY ANY MEANS, GRAPHIC ELECTRONIC OR MECHANICAL, INCLUDING PHOTOCOPYING WITHOUT THE WRITTEN PERMISSION OF SQUIRE AND PARTNERS ARCHITECTS.

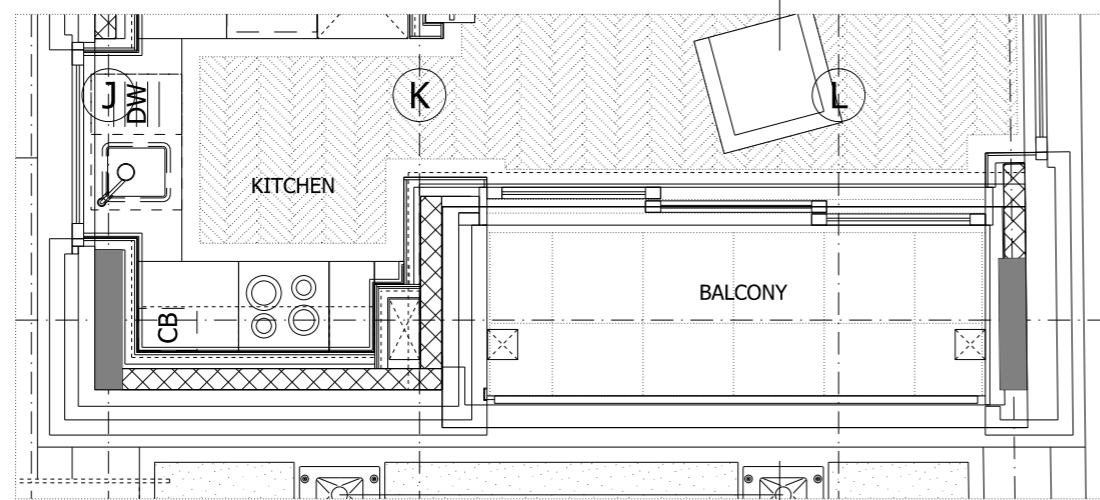


01 South-West Elevation  
 15047\_G200\_E\_SW\_001

- Aluminium coping profile to F30/780A
- Natural stone rainscreen spandrel to H51/112
- Natural stone modules to H51/113
- Aluminium framed fixed full height glazing system to L20/520A
- Aluminium balustrade with glazed infill to L30/551A
- LED Recessd Wall Luminaire



03 Section AA  
 15047\_G200\_S\_AA\_001



02 Third/Typical Floor Plan  
 15047\_G200\_P\_03\_001

| Revision description | Date     | Check | Rev |
|----------------------|----------|-------|-----|
| Issued for tender    | 15/06/17 | SG    | A   |
| Issued for Stage 2   | 04/07/16 | SG    | -   |

## SQUIRE & PARTNERS

The Department Store  
 248 Ferndale Road, London SW9 8FR  
 T: 020 7278 5555

info@squireandpartners.com  
 www.squireandpartners.com

Project  
 192 Haverstock Hill  
 London, NW3

Drawing  
 Proposed South-West Elevation  
 Third/Typical Floor Bay Study  
 Balcony

| Drawn      | Date           | Scale                |
|------------|----------------|----------------------|
| EDH        | 08/12/2016     | 1: 25@A1<br>1: 50@A3 |
| Job number | Drawing number | Revision             |
| 15047      | G251_BS_TY_003 | A                    |