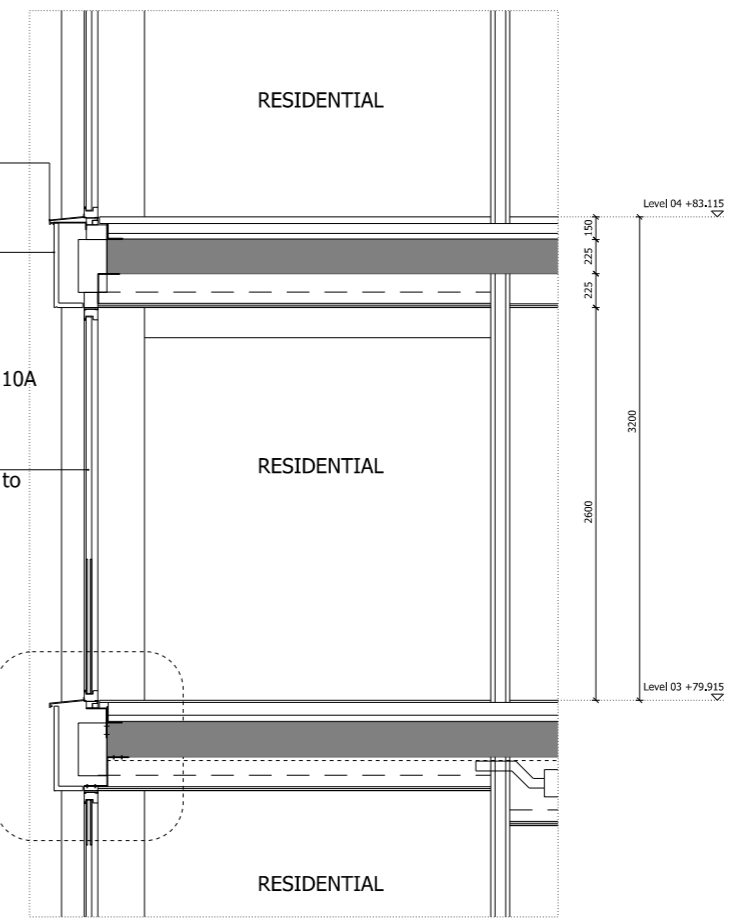


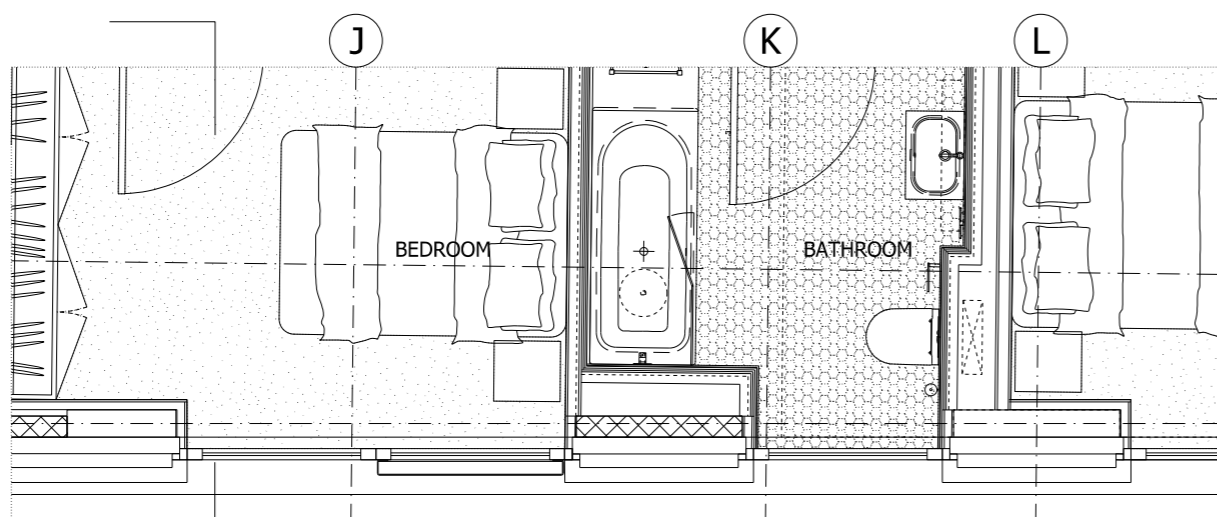
01 South-East Elevation
15047_G200_E_SE_001

- Aluminium coping profile to F30/780A
- Natural stone rainscreen spandrel to H51/112
- Perforated anodised aluminium panel to H31/110A
- Aluminium framed fixed full height glazing system to L10/330A
- Natural stone modules to H51/113

02
G251_BS_TY_002



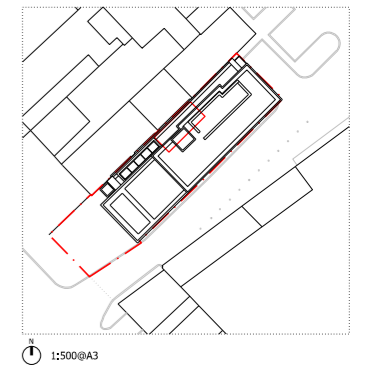
03 Section FF
15047_G200_S_FF_001



02 Third Floor Plan
15047_G200_P_03_001

NOTES:
DO NOT SCALE FROM THIS DRAWING.
ALL DIMENSIONS TO BE CHECKED ON SITE.
ALL OMISSIONS AND DISCREPANCIES TO BE REPORTED TO THE ARCHITECT IMMEDIATELY.

ALL RIGHTS RESERVED. THIS WORK IS COPYRIGHT AND CANNOT BE REPRODUCED OR COPIED OR MODIFIED IN ANY FORM OR BY ANY MEANS, GRAPHIC ELECTRONIC OR MECHANICAL, INCLUDING PHOTOCOPYING WITHOUT THE WRITTEN PERMISSION OF SQUIRE AND PARTNERS ARCHITECTS.



Issued for tender	15/06/17	SG	A
Issued for Stage 2	04/07/16	SG	-
Revision description	Date	Check	Rev

SQUIRE & PARTNERS

The Department Store
248 Ferndale Road, London SW9 8FR
T: 020 7278 5555
info@squireandpartners.com
www.squireandpartners.com

Project
192 Haverstock Hill
London, NW3

Drawing
Proposed South-East Elevation
Third/Typical Floor Baystudy
Typical Windows

Drawn	Date	Scale
CDP	04/05/2016	1:25@A1 1:50@A3
Job number	Drawing number	Revision
15047	G251_BS_TY_002	A