



01 South-East Elevation
15047_G200_E_SE_001

Aluminium coping profile to F30/780A

Natural stone rainscreen spandrel to H51/112

Natural stone modules in running bond to 51/111

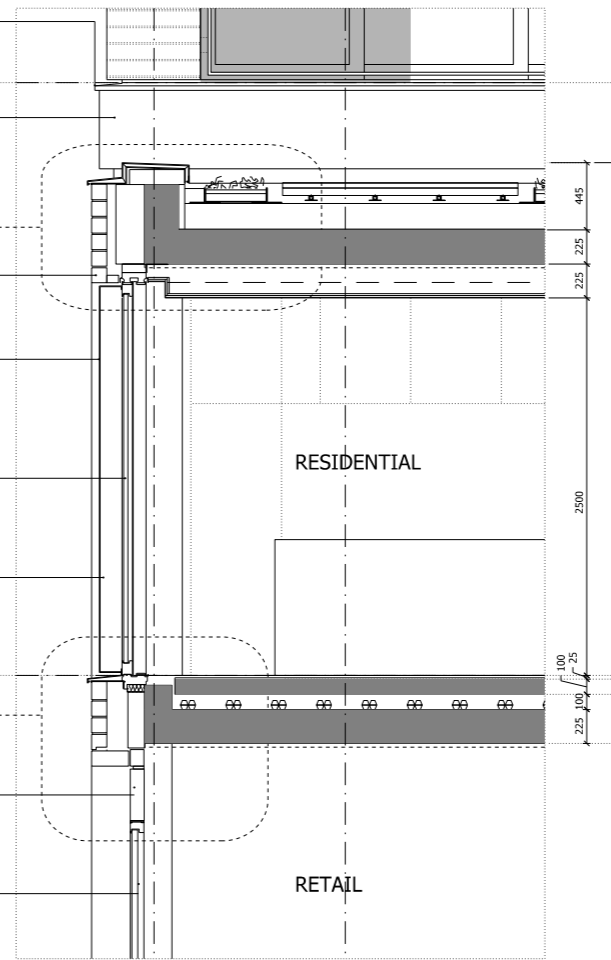
Perforated anodised aluminium panel to H31/110A

Aluminium framed sliding full height glazing system to L20/520B

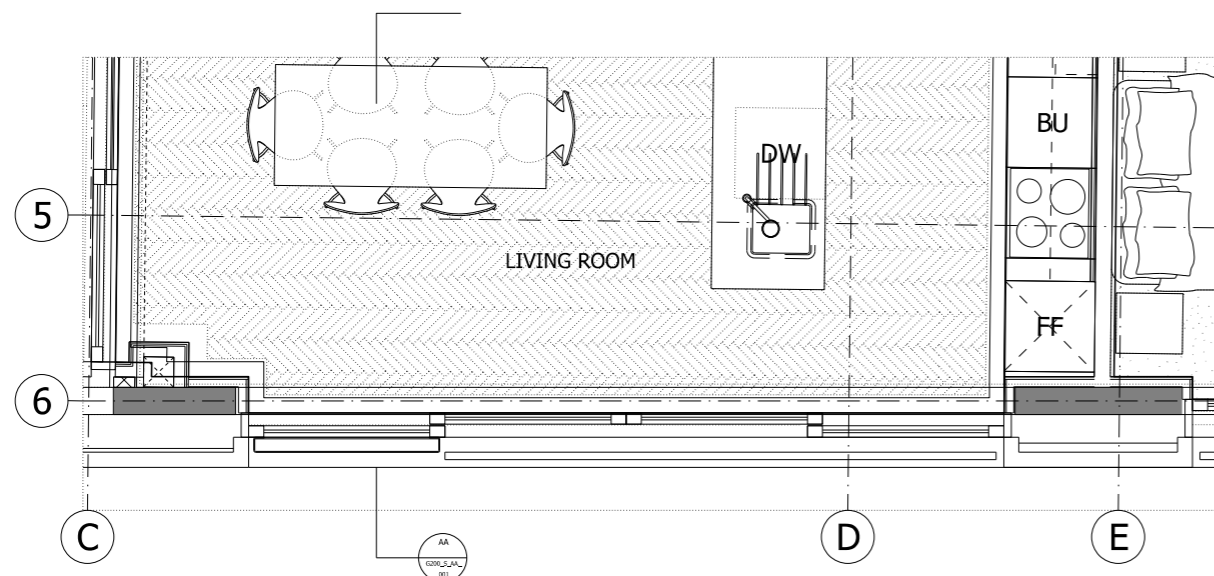
Aluminium balustrade with glazed infill to L30/551A

Aluminium insulated dummy panel for louver if required by tenant H11/110C

Aluminium framed fixed full height glazing system H11/110C



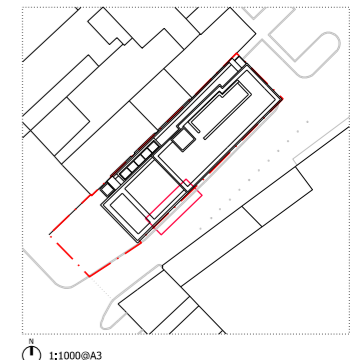
03 Section
15047_G200_S_CC_001



02 First Floor Plan
15047_G200_P_01_001

NOTES:
DO NOT SCALE FROM THIS DRAWING.
ALL DIMENSIONS TO BE CHECKED ON SITE.
ALL OMISSIONS AND DISCREPANCIES TO BE REPORTED TO THE ARCHITECT IMMEDIATELY.

ALL RIGHTS RESERVED. THIS WORK IS COPYRIGHT AND CANNOT BE REPRODUCED OR COPIED OR MODIFIED IN ANY FORM OR BY ANY MEANS, GRAPHIC ELECTRONIC OR MECHANICAL, INCLUDING PHOTOCOPYING WITHOUT THE WRITTEN PERMISSION OF SQUIRE AND PARTNERS ARCHITECTS.



1:1000@A3

Issued for tender	15/06/17	SG	A
Issued for Stage 2	04/07/16	SG	-
Revision description	Date	Check	Rev

SQUIRE & PARTNERS

The Department Store
248 Ferndale Road, London SW9 8FR
T: 020 7278 5555
info@squireandpartners.com
www.squireandpartners.com

Project
192 Haverstock Hill
London, NW3

Drawing
Proposed South-East Elevation
First Floor Bay Study
Four Panel Window

Drawn	Date	Scale
SG	04/05/2016	1:25@A1 1:50@A3
Job number	Drawing number	Revision
15047	G251_BS_01_002	A