

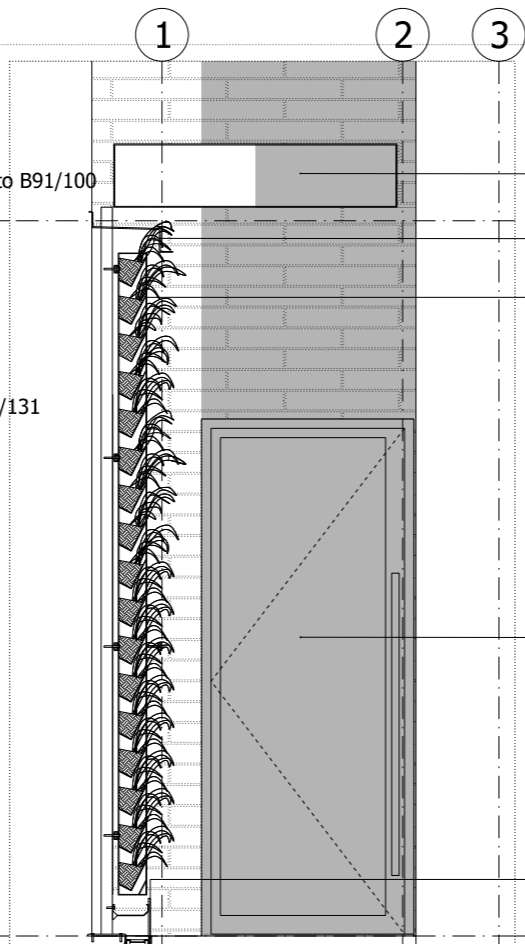
Bronzed anodized aluminium canopy with integrated lighting to B91/100  
Level 01 +72.790

Natural stone modules in running bond to H51/111

Black painted metal gate to Q50/131

Intercom system with video camera to Q50/131

01 Elevation South West  
15047\_G200\_E\_SW\_001



Bronzed anodized aluminium canopy with integrated lighting to B91/100

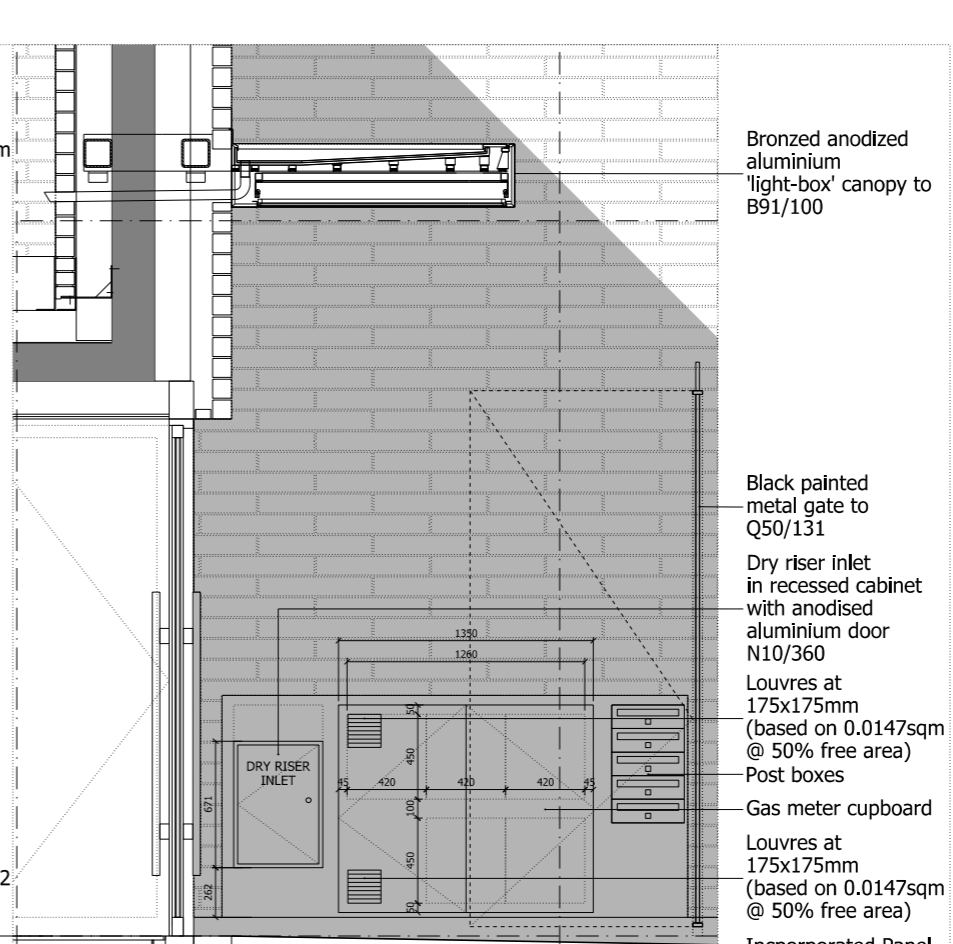
Aluminium flashing to F30/420A

Green wall to Q31/292

Anodised Aluminium glazed residential entrance door with stainless steel tubular handle to L20/300A

Green wall drain to Q31/292

02 Elevation South West - Behind Gate  
15047\_G200\_E\_SW\_001



Bronzed anodized aluminium 'light-box' canopy to B91/100

Black painted metal gate to Q50/131

Dry riser inlet in recessed cabinet with anodised aluminium door N10/360

Louvres at 175x175mm (based on 0.0147sqm @ 50% free area)

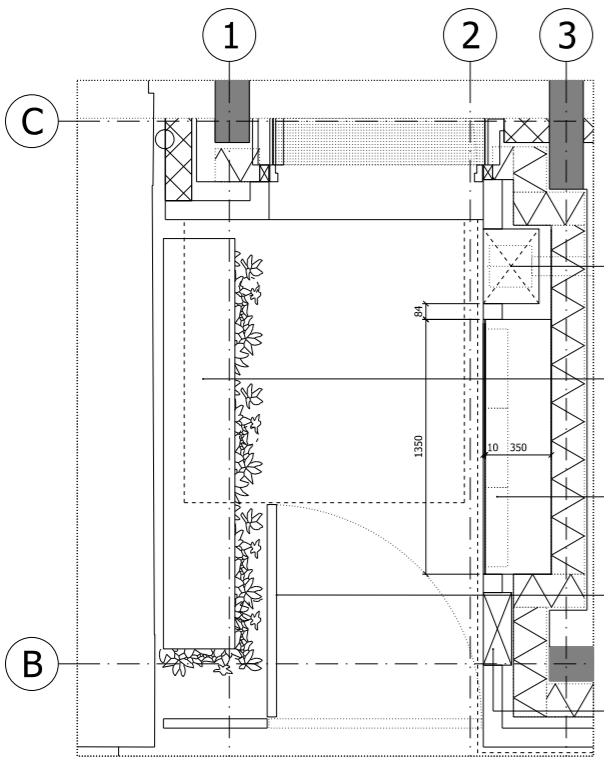
Post boxes

Gas meter cupboard

Louvres at 175x175mm (based on 0.0147sqm @ 50% free area)

Incorporated Panel to N10/360

03 Elevation North West - Post Boxes  
15047\_G200\_E\_NW\_001



Dry Riser inlet in recessed cabinet to N10/360

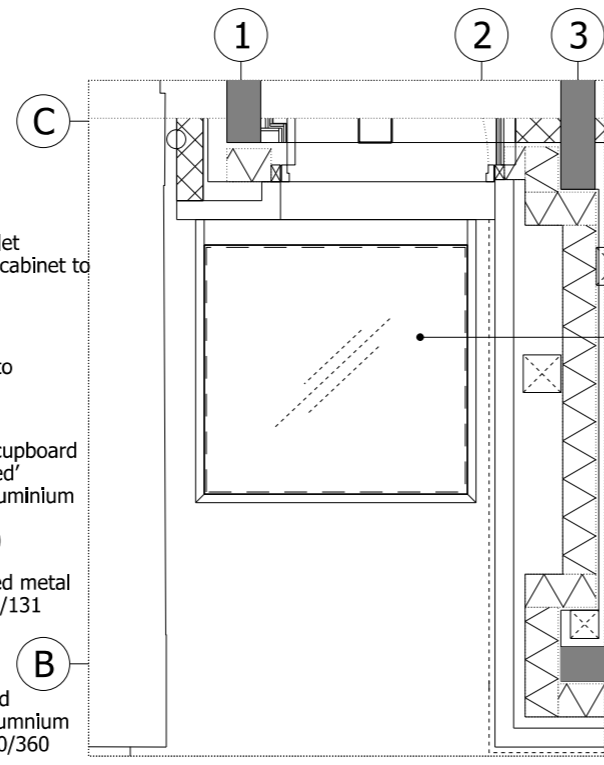
Green wall to N10/360

Gas meter cupboard with 'bronzed' anodised aluminium doors to N10/360

Black painted metal gate to Q50/131

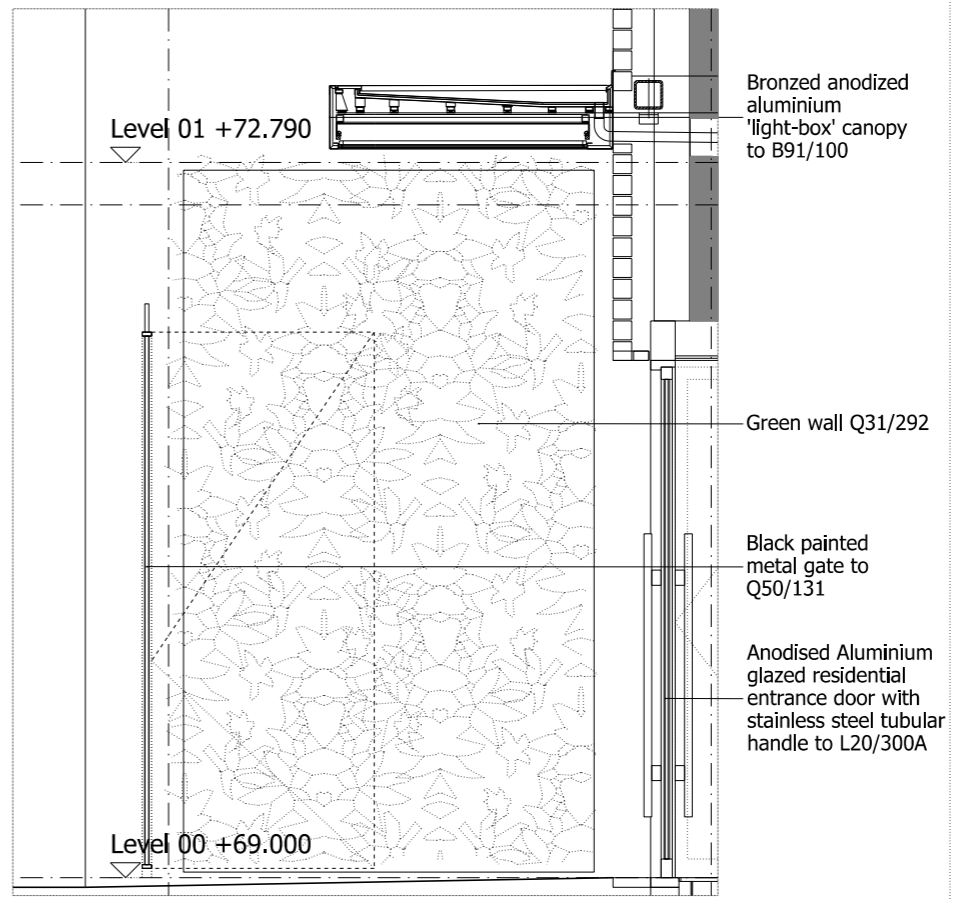
Post boxes with bronzed anodised aluminium finish to N10/360

04 Ground Plan  
15047\_G200\_P\_00\_001



Bronzed anodized aluminium canopy with acrylic lightbox base and integrated lighting to B91/100

05 Ground Floor RCP  
15047\_G332\_P\_00\_100



Bronzed anodized aluminium 'light-box' canopy to B91/100

Green wall Q31/292

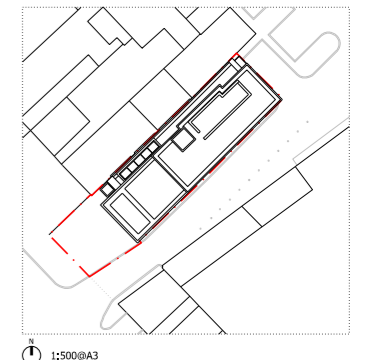
Black painted metal gate to Q50/131

Anodised Aluminium glazed residential entrance door with stainless steel tubular handle to L20/300A

06 Elevation North West - Post Boxes  
15047\_G200\_E\_SE\_001

NOTES:  
DO NOT SCALE FROM THIS DRAWING.  
ALL DIMENSIONS TO BE CHECKED ON SITE.  
ALL OMISSIONS AND DISCREPANCIES TO BE REPORTED TO THE ARCHITECT IMMEDIATELY.

ALL RIGHTS RESERVED. THIS WORK IS COPYRIGHT AND CANNOT BE REPRODUCED OR COPIED OR MODIFIED IN ANY FORM OR BY ANY MEANS, GRAPHIC ELECTRONIC OR MECHANICAL, INCLUDING PHOTOCOPYING WITHOUT THE WRITTEN PERMISSION OF SQUIRE AND PARTNERS ARCHITECTS.



1:500@A3

Issued for tender	15/06/17	SG	-
Revision description	Date	Check	Rev

**SQUIRE & PARTNERS**

The Department Store  
248 Ferndale Road, London SW9 8FR  
T: 020 7278 5555  
info@squireandpartners.com  
www.squireandpartners.com

Project  
192 Haverstock Hill  
London, NW3

Drawing  
External Walls  
South West Facade Bay Study  
Residential Front Entrance

Drawn	Date	Scale
EDH	05/12/2016	1:20@A1 1:40@A3
Job number	Drawing number	Revision
15047	G251_BS_00_004	-