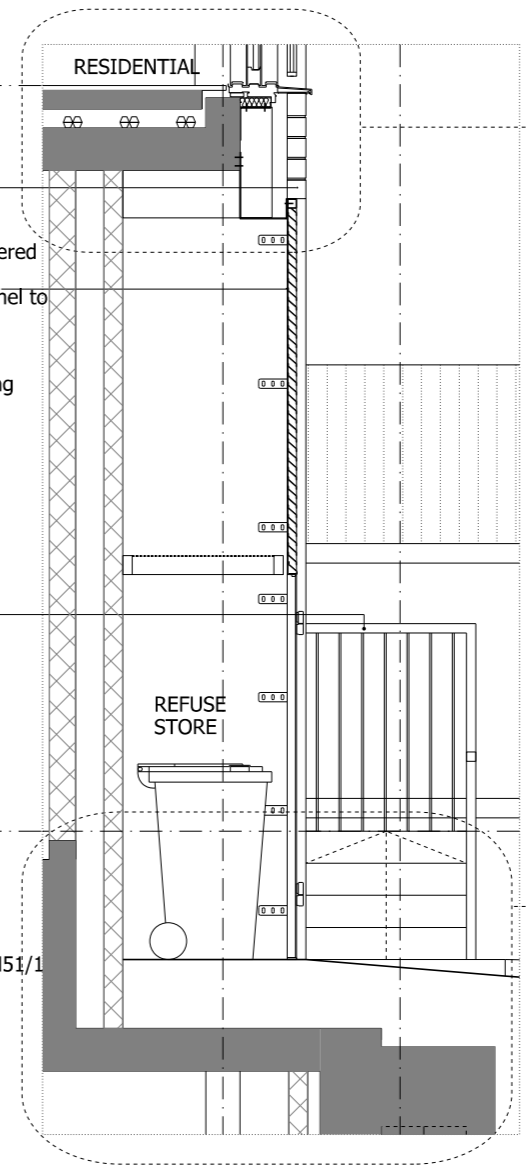
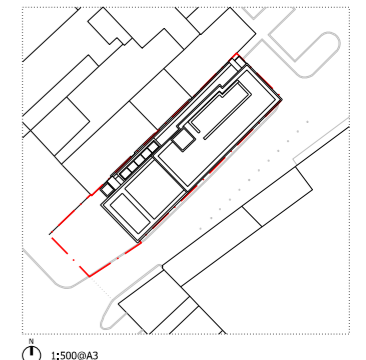


- Natural stone modules in stretcher bond to H51/111
- Double leaf louvered doorsets with louvered overpanel to L20/480B
- External up and down wall lighting
- Painted timber external door to L20/300B
- Black metal handrail to L20/551B
- Dark concrete plinth staircase to match granite Granite base course to H51/114

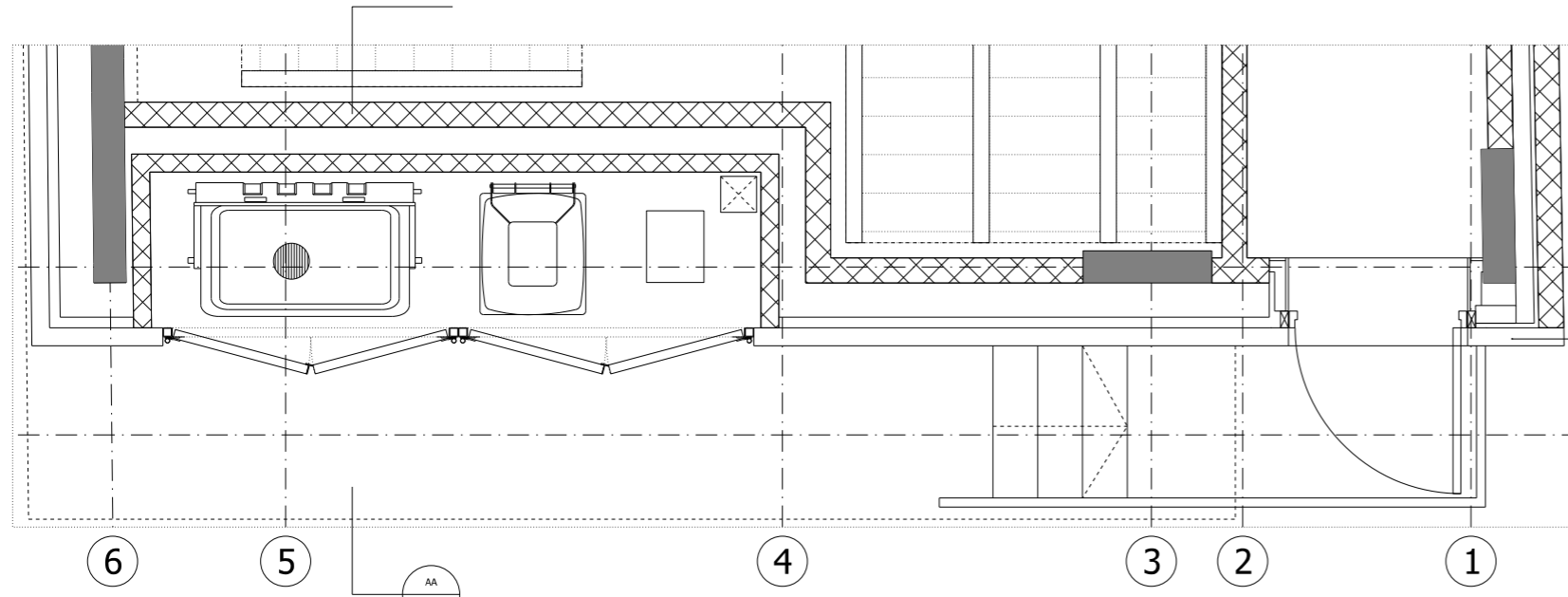


NOTES:  
 DO NOT SCALE FROM THIS DRAWING.  
 ALL DIMENSIONS TO BE CHECKED ON SITE.  
 ALL OMISSIONS AND DISCREPANCIES TO BE REPORTED TO THE ARCHITECT IMMEDIATELY.  
 ALL RIGHTS RESERVED. THIS WORK IS COPYRIGHT AND CANNOT BE REPRODUCED OR COPIED OR MODIFIED IN ANY FORM OR BY ANY MEANS, GRAPHIC ELECTRONIC OR MECHANICAL, INCLUDING PHOTOCOPYING WITHOUT THE WRITTEN PERMISSION OF SQUIRE AND PARTNERS ARCHITECTS.



**01** Elevation North East  
 15047\_G200\_E\_NE\_001

**02** Section AA  
 15047\_G200\_S\_AA\_001



**01** Plan  
 15047\_G200\_P\_00\_001

Revision description	Date	Check	Rev
Issued for tender	15/06/17	SG	-

**SQUIRE & PARTNERS**

The Department Store  
 248 Ferndale Road, London SW9 8FR  
 T: 020 7278 5555  
 info@squireandpartners.com  
 www.squireandpartners.com

Project  
**192 Haverstock Hill**  
 London, NW3

Drawing  
**External Walls**  
**North East Facade Bay Study**  
**Refuse Doors and Back Door**

Drawn	Date	Scale
EDH	29/11/2016	1:20@A1 1:40@A3
Job number	Drawing number	Revision
15047	G251_BS_00_003	-