

Level 02 +76.715
T.O.P +76.185

Natural stone rainscreen spandrel to H51/112

Aluminium profiled coping to F30/780A

Timber hardwood beam to G20/260

Natural stone modules in stretcher bond to H51/111

TERRACE

Anodised aluminium fascia panel for tenant signage to H31/130

Cover plate and box for mechanical awning. Awning provided by tenant H31/140

Level 01 +72.790

White back painted glazed panel H11/110E, 110F

Street number signage in bronzed anodized aluminium lettering on stone backing N91/120

192

Aluminium framed glazed door shop front to L20/480A

Aluminium framed fixed window shop front to H11/110A

RETAIL

Road Level 00 +69.000

Retail Level 00 +68.840

01 Section AA
15047_G200_S_AA_001

02 Elevation South West
15047_G200_E_SW_001

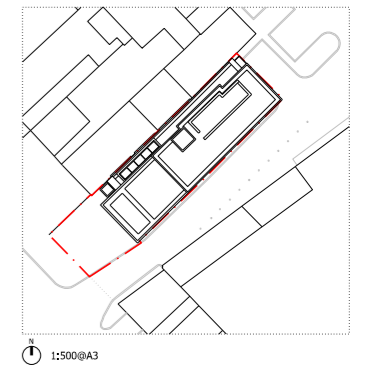
03 Plan Ground Floor
15047_G200_F_SW_001

Natural stone modules in stretcher bond to H51/111

Granite threshold with adequate slip resistance to H51/114

NOTES:
DO NOT SCALE FROM THIS DRAWING.
ALL DIMENSIONS TO BE CHECKED ON SITE.
ALL OMISSIONS AND DISCREPANCIES TO BE REPORTED TO THE ARCHITECT IMMEDIATELY.

ALL RIGHTS RESERVED. THIS WORK IS COPYRIGHT AND CANNOT BE REPRODUCED OR COPIED OR MODIFIED IN ANY FORM OR BY ANY MEANS, GRAPHIC ELECTRONIC OR MECHANICAL, INCLUDING PHOTOCOPYING WITHOUT THE WRITTEN PERMISSION OF SQUIRE AND PARTNERS ARCHITECTS.



Issued For Tender	15/06/17	SG	-
Revision description	Date	Check	Rev

SQUIRE & PARTNERS

The Department Store
248 Ferndale Road, London SW9 8FR
T: 020 7278 5555
info@squireandpartners.com
www.squireandpartners.com

Project
192 Haverstock Hill
London, NW3

Drawing
External Walls
South West Facade Bay Study
Retail Front

Drawn	Date	Scale
EDH	29/11/2016	1:20@A1 1:40@A3
Job number	Drawing number	Revision
15047	G251_BS_00_001	-