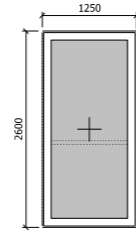


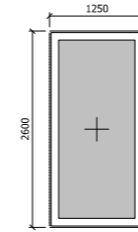
Window Type 13: Residential Terrace Glazing

Location: First Floor Terrace, SE Elevation
 Window Ref: 1.W13
 Spec-ref: L10/330D
 Max U-value: 1.4W/m²K
 Max G-value: 0.6
 Frame type: Schuco AWS-75-SI
 Operation: Single fixed pane
 Frame finish: PPC Aluminium (Bronze, Tiger Drylac 068/60516)
 Glazing outer pane: 6mm Pilkington Optifloat Clear
 Glazing inner pane: 6mm Pilkington Optitherm S1 Plus
 Acoustic Rating: 39dB



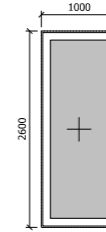
Window Type 14: Residential Obscure Glazing

Location: Second to Fourth Floors, NW Elevation
 Window Ref: 2.W14, 3.W14, 4.W14
 Spec-ref: L10/330E
 Max U-value: 1.4W/m²K
 Max G-value: 0.6
 Frame type: Schuco ADS-80-FR-60 (mid-transom internal only)
 Operation: Single fixed pane
 Frame finish: PPC Aluminium (Bronze, Tiger Drylac 068/60516)
 Glazing outer pane: 27mm Pilkington Pyrostop 60-201 Opal
 Glazing inner pane: 6mm Pilkington K Glass S
 Acoustic Rating: 36dB



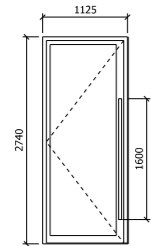
Window Type 15: Residential Obscure Glazing

Location: First Floors, NW Elevation
 Window Ref: 2.W15, 3.W15, 4.W15
 Spec-ref: L10/330F
 Max U-value: 1.4W/m²K
 Max G-value: 0.6
 Frame type: Schuco ADS-80-FR-60
 Operation: Single fixed pane
 Frame finish: PPC Aluminium (Bronze, Tiger Drylac 068/60516)
 Glazing outer pane: 27mm Pilkington Pyrostop 60-201 Opal
 Glazing inner pane: 6mm Pilkington K Glass S
 Acoustic Rating: 36dB



Window Type 16: Residential Obscure Glazing

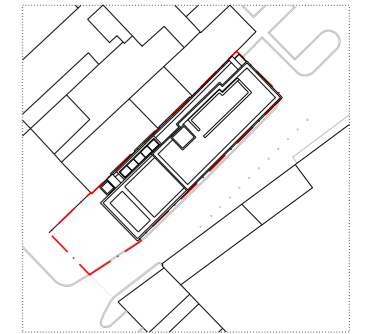
Location: First Floors, NW Elevation
 Window Ref: 1.W16.A, 1.W16.B
 Spec-ref: L10/330G
 Max U-value: 1.4W/m²K
 Max G-value: 0.6
 Frame type: Schuco ADS-80-FR-60
 Operation: Single fixed pane
 Frame finish: PPC Aluminium (Bronze, Tiger Drylac 068/60516)
 Glazing outer pane: 27mm Pilkington Pyrostop 60-201 Opal
 Glazing inner pane: 6mm Pilkington K Glass S
 Acoustic Rating: 36dB



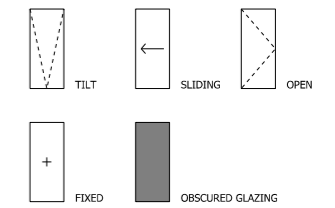
Door Type EX01: Residential Main Entrance Door

Location: Ground Floor Terrace, SW Elevation
 Door Ref: G.D03
 Spec-ref: L20/300A
 Max U-value: 1.4W/m²K
 Max G-value: 0.6
 Frame type: Schuco ADS-75-HD-HI
 Operation: Pivot hinged doorset
 Frame finish: Anodised Aluminium Analok 545
 Glazing outer pane: 6mm Pilkington Optifloat Clear
 Glazing inner pane: 6mm Pilkington Optitherm S1 Plus
 Acoustic Rating: 39dB

NOTES:
 DO NOT SCALE FROM THIS DRAWING.
 ALL DIMENSIONS TO BE CHECKED ON SITE.
 ALL OMISSIONS AND DISCREPANCIES TO BE REPORTED TO THE ARCHITECT IMMEDIATELY.
 ALL RIGHTS RESERVED. THIS WORK IS COPYRIGHT AND CANNOT BE REPRODUCED OR COPIED OR MODIFIED IN ANY FORM OR BY ANY MEANS, GRAPHIC ELECTRONIC OR MECHANICAL, INCLUDING PHOTOCOPYING WITHOUT THE WRITTEN PERMISSION OF SQUIRE AND PARTNERS ARCHITECTS.



1:500@A3



All dimensions are taken to structural opening.

Revision description	Date	Check	Rev
Issued for Tender	15/06/17	SG	-

SQUIRE & PARTNERS

The Department Store
 248 Ferndale Road, London SW9 8FR
 T: 020 7278 5555

info@squireandpartners.com
 www.squireandpartners.com

Project
192 Haverstock Hill
 London, NW3

Drawing
Window & External Door
 Schedule
 2/2

Drawn	Date	Scale
SG	12/05/17	1: 50@A1 1: 100@A3
Job number	Drawing number	Revision
15047	G321_E_AL_002	-