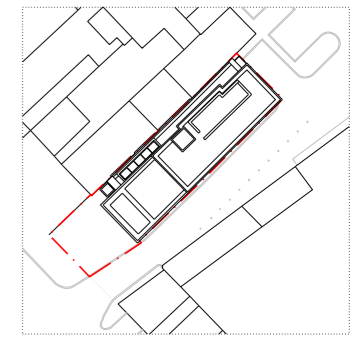
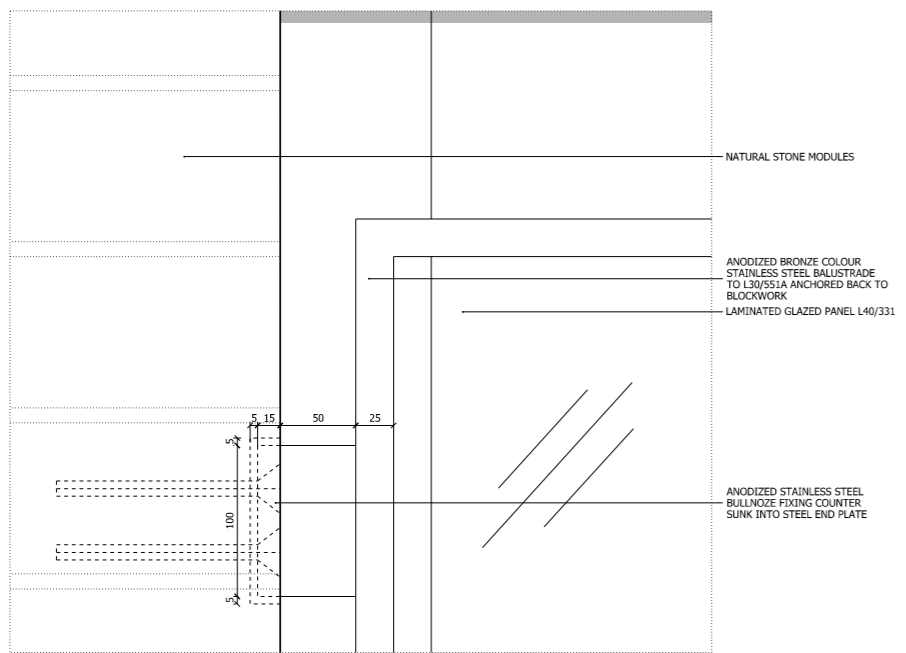


NOTES:  
 DO NOT SCALE FROM THIS DRAWING.  
 ALL DIMENSIONS TO BE CHECKED ON SITE.  
 ALL OMISSIONS AND DISCREPANCIES TO BE REPORTED TO THE ARCHITECT IMMEDIATELY.

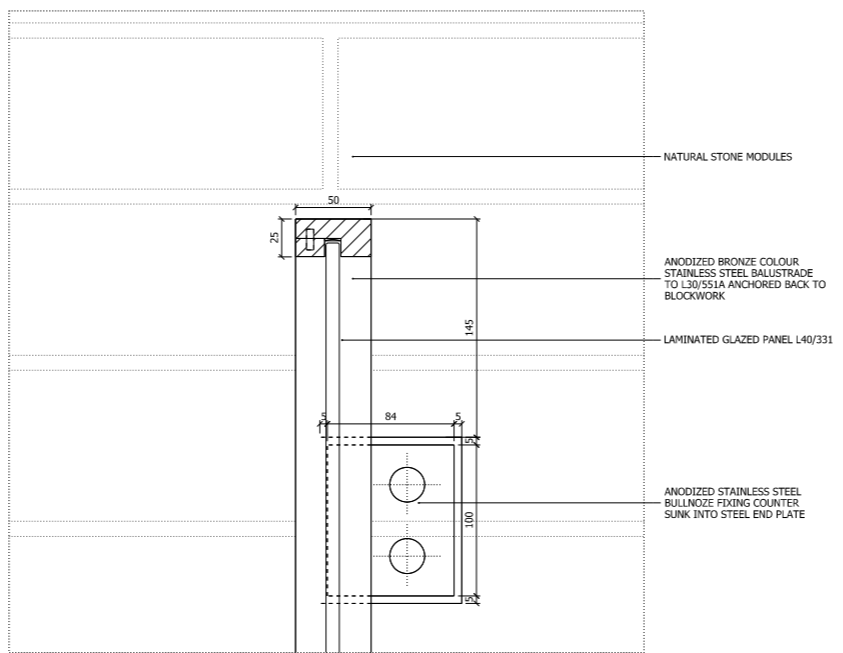
ALL RIGHTS RESERVED. THIS WORK IS COPYRIGHT AND CANNOT BE REPRODUCED OR COPIED OR MODIFIED IN ANY FORM OR BY ANY MEANS, GRAPHIC ELECTRONIC OR MECHANICAL, INCLUDING PHOTOCOPYING WITHOUT THE WRITTEN PERMISSION OF SQUIRE AND PARTNERS ARCHITECTS.



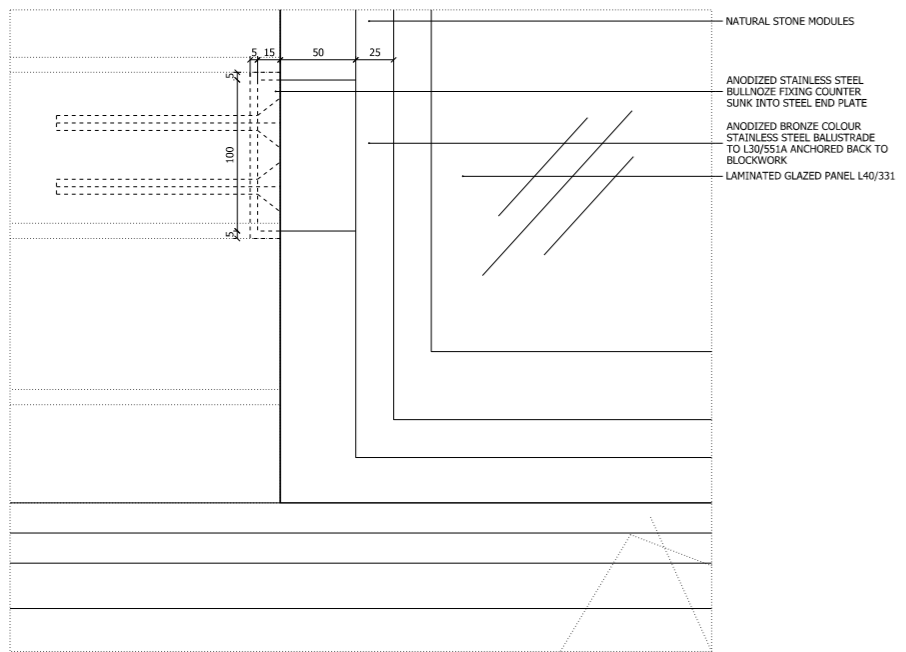
1:500@A3  
 NOTE:  
 OVERALL BALUSTRADE HEIGHT 1100mm FROM TERRACE FFL.



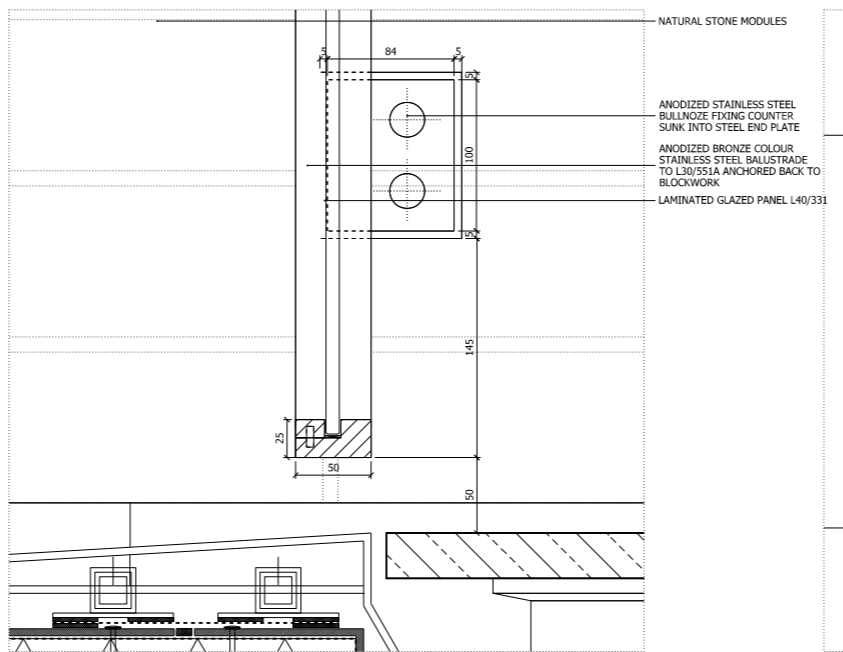
01 Front Elevation - Top Bracket (Handed)  
 G251\_BS\_TY\_003



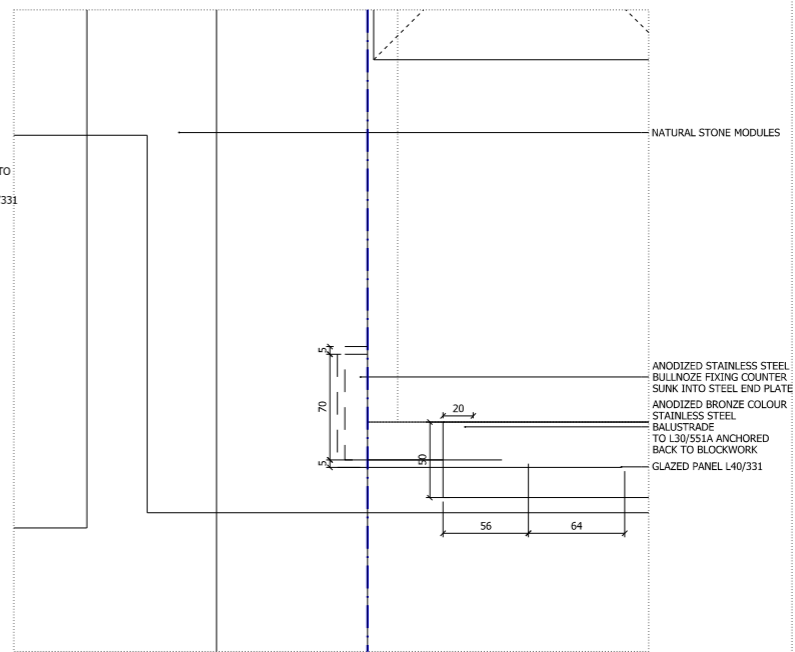
02 Section - Top Bracket (Handed)  
 G251\_BS\_TY\_003



03 Front Elevation - Bottom Bracket (Handed)  
 G251\_BS\_TY\_003



04 Section - Bottom Bracket (Handed)  
 G251\_BS\_TY\_003



05 Plan Through Bracket  
 G251\_BS\_TY\_003

Revision description	Date	Check	Rev
Issued for Tender	15/06/17	SG	-

**SQUIRE & PARTNERS**  
 The Department Store  
 248 Ferndale Road, London SW9 8FR  
 T: 020 7278 5555  
 info@squireandpartners.com  
 www.squireandpartners.com

Project  
**192 Haverstock Hill**  
 London, NW3

Drawing  
**External Feature Balustrade Details**

Drawn	Date	Scale
SZ	09/05/2017	1: 2.5@A1 1: 5@A3
Job number	Drawing number	Revision
15047	G251_D_TY_010	-