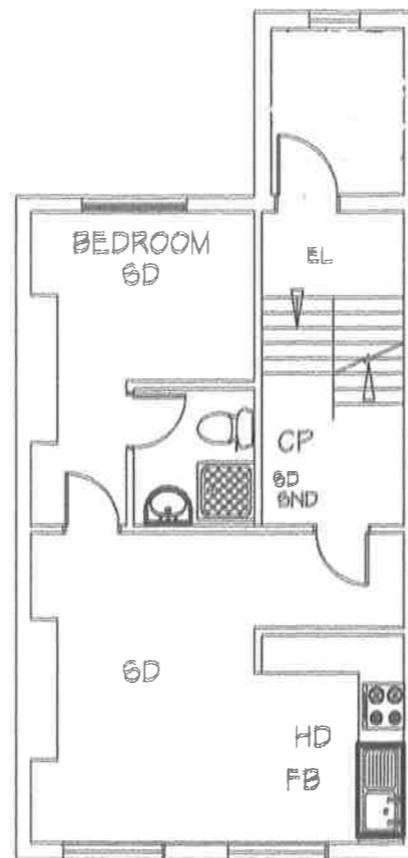


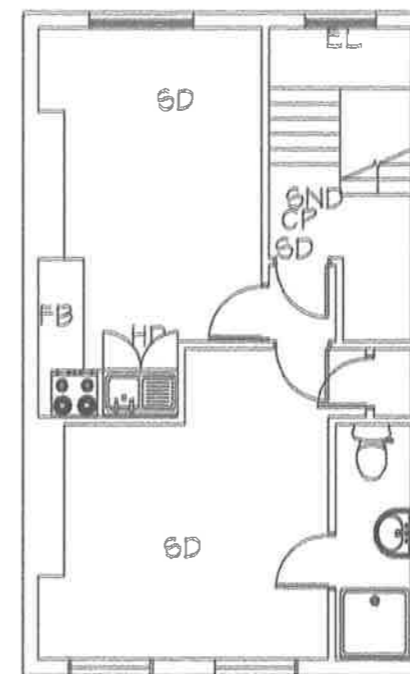
BASEMENT FLAT



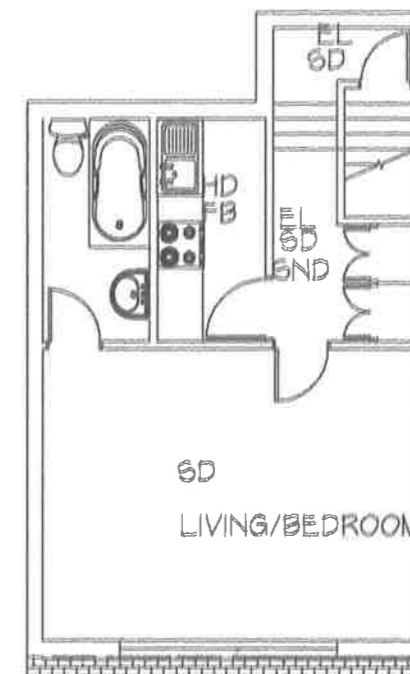
GROUND FLOOR FLAT



FIRST FLOOR FLAT



SECOND FLOOR FLAT



TOP FLOOR FLAT

- KEY
- SD = SMOKE DETECTOR
 - SD* = NON INTERLINKED SMOKE DETECTOR
 - HD = HEAT DETECTOR
 - SND = SOUNDER
 - CONTROL PANEL = CONTROL PANEL
 - CP = CALL POINT
 - FB = FIRE BLANKET

NOTES:

Automatic fire detection system is provided in accordance with British Standard 5839 Part 1, (L2 type system)

- a) Heat detectors in rooms with kitchen facilities
- b) Smoke detectors in other rooms, (except bathrooms/w.c.s), escape route cupboards on escape route and ealier.

Non-interlinked smoke alarms to be provided in bedrooms with kitchen facilities. Battery back up wired to the lighting circuit to sound only in the room concerned, in accordance with British Standard 5446 Part 1.

Emergency escape lighting is provided in accordance with British Standard 5266.

Carbon dioxide extinguishers, of 2Kg capacity, are provided adjacent to all kitchen facilities to comply with British Standard EN31199.

Fire blankets are provided adjacent to all kitchen facilities in accordance with British Standard BS75.

Water extinguishers are provided on each floor of the common parts to comply with British Standard EN31199 and to have a minimum 13A fire test rating.

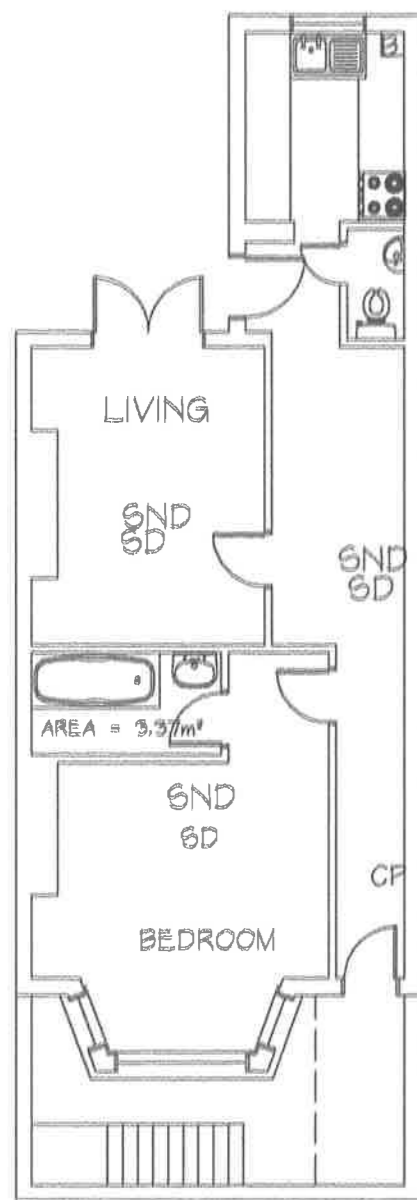
JOB
PROPERTY LAYOUT

TITLE
36 ANGER ROAD NW3

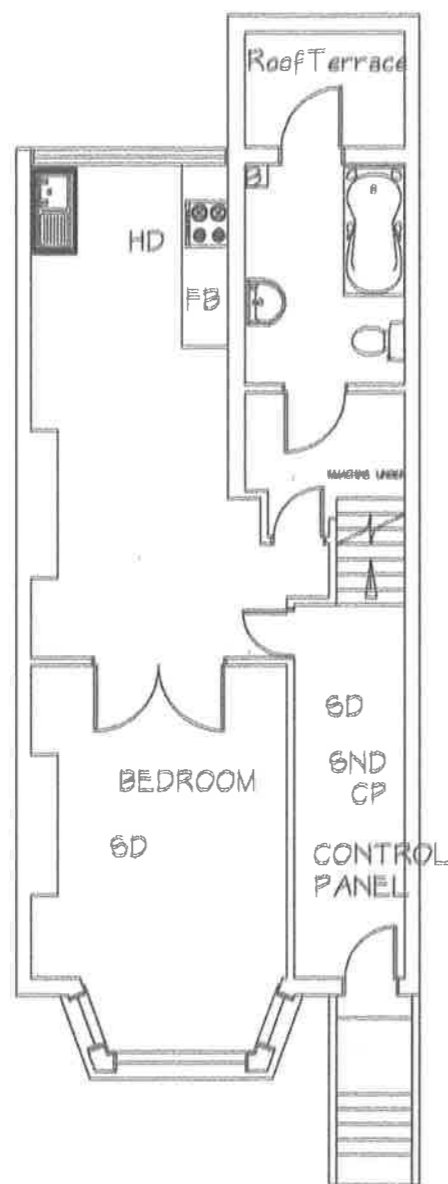
SCALE 1:100 approx

DATE July 2017

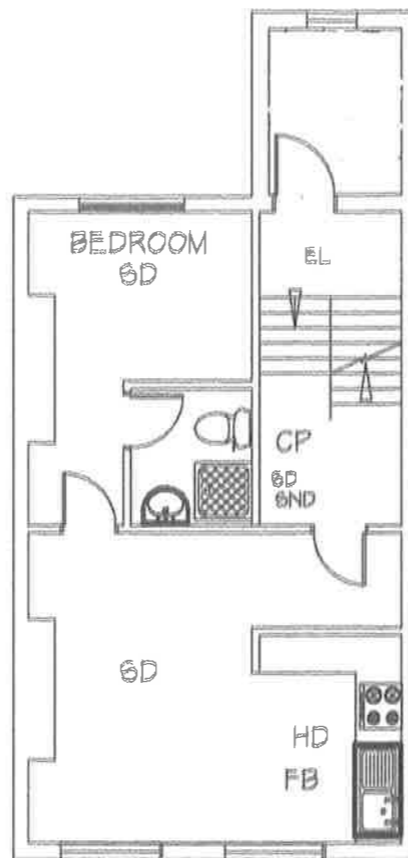
JOB NO: DRA NO: REV:



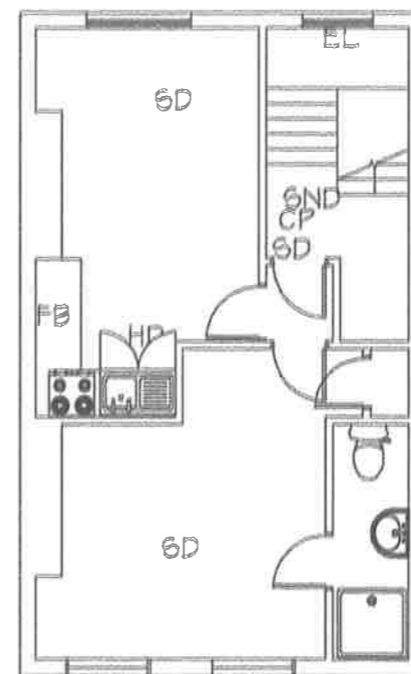
BASEMENT FLAT



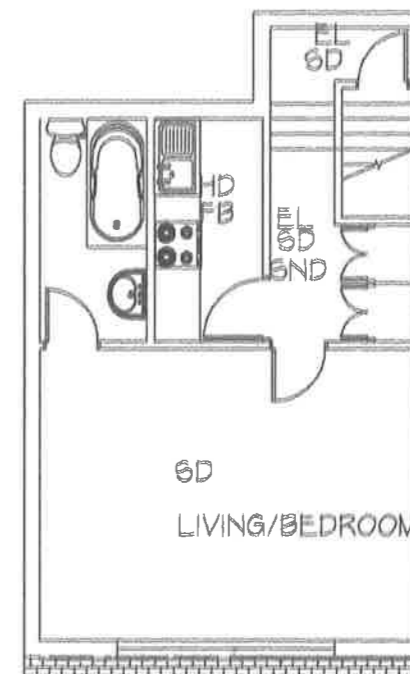
GROUND FLOOR FLAT



FIRST FLOOR FLAT



SECOND FLOOR FLAT



TOP FLOOR FLAT

- KEY
- SD = SMOKE DETECTOR
 - SD* = NON INTERLINKED SMOKE DETECTOR
 - HD = HEAT DETECTOR
 - SDN = SOUNDER
 - CONTROL PANEL = CONTROL PANEL
 - CP = CALL POINT
 - FB = FIRE BLANKET

NOTES:

Automatic fire detection system is provided in accordance with British Standard BS58 Part 1, (L2 type system)

- a) Heat detectors in rooms with kitchen facilities
- b) Smoke detectors in other rooms, (except bathrooms/w.c.s), escape route cupboards on escape route and cellar.

Non-interlinked smoke alarms to be provided in bedrooms with kitchen facilities. Battery back up wired to the lighting circuit to sound only in the room concerned, in accordance with British Standard BS446 Part 1.

Emergency escape lighting is provided in accordance with British Standard BS205.

Carbon dioxide extinguishers, of 2Kg capacity, are provided adjacent to all kitchen facilities to comply with British Standard EN31096

Fire blankets are provided adjacent to all kitchen facilities in accordance with British Standard BS75

Water extinguishers are provided on each floor of the common parts to comply with British Standard EN31096 and to have a minimum 13A Fire test rating.

JOB
PROPERTY LAYOUT

TITLE
36 ANGER ROAD NW3

SCALE 1:100 approx

DATE July 2017

JOB NO: DRA NO: REV: